



# HOWZAT!



## ROTARY CLUB OF NEWLANDS

“The club that appeals”



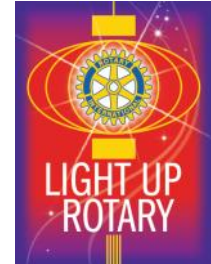
**President: Wybe Meinesz**  
**Secretary: Lucian Pitt**

Editor: Peter Ennis

e-mail: [howzat@newlands.org.za](mailto:howzat@newlands.org.za)

Newlands Rotary website: [www.newlands.org.za](http://www.newlands.org.za)

Rotary District 9350 website: [www.rotary9350.co.za](http://www.rotary9350.co.za)



29 June 2015

## WEEKLY UPDATE

P O Box 44735  
CLAREMONT  
7735

**MEETINGS:** Western Province Cricket Club Sports Centre, Ave De Mist, Rondebosch, every Monday at 18h00 for 18h15 (Except for first Monday of the Month which is a Partner's Meeting, 18h30 for 19h00).

**ATTENDANCE:** Notice of apologies and guests and/or meal specifics to email Vanessa Rousseau at [rousseau@iafrica.com](mailto:rousseau@iafrica.com) and copy to Melinda Stapleton at [mjstapleton@webafrica.org.za](mailto:mjstapleton@webafrica.org.za) before 10.00 on Monday mornings please.

### Comment

*Via Vanessa Rousseau*

### Cost Of Transport for Low Income Households

*The City of Cape Town's Transport Development Index (TDI) – the first to be developed in Africa – reveals that 95% of commuters making use of public transport in the city fall within the low and low to medium income groups; furthermore that the low income group spends on average R45 out of every R100 (or 45%) of their monthly household income on transport.*

The TDI was developed by Transport for Cape Town (TCT), the City's transport authority, to evaluate the accessibility and related costs of transport to different income groups and users (the movement of people and goods) across the city.

'Simply put, the TDI tells us how commuters move around the city and then reveals to us their biggest concerns with their preferred modes of transport in terms of cost, safety, crime, flexibility and congestion. The TDI therefore gives us an honest, fact-based understanding of how residents from different income groups and user groups are impacted by these factors,' said the City's Mayoral Committee Member: Transport for Cape Town, Councillor Brett Herron.

As such, the TDI has established the following:

- The majority of the population in the low income group are located in remote areas; meaning those among us with a monthly household income of R3 200 and less have to travel between 45 km to 70 km every day to get to work opportunities
- The majority of the commuters in the low income group live in Mitchells Plain (approximately 320 000) and Khayelitsha (approximately 250 000)
- Residents who fall within the low-income group either use public transport or walk to where they need to be
- Contrary to the original assumption that 80% of public transport users in Cape Town fall in the low and low to medium income group, this figure is actually as high as 95%, with 48% falling in the low income group and 47% in the low to medium income group
- Low income users spend up to 45% of their monthly household income on transport, while the international norm is between 5% and 10%
- The highest priority cost for public transport has been identified as flexibility, which clearly means that there is not enough public transport and integration is poor
- The TDI revealed that when it comes to freight, congestion adds 10% to the direct costs. Further, freight costs the City R731 million per annum in relation to infrastructure and maintenance

'Even though these statistics make for uncomfortable reading, this information is invaluable in that it will guide TCT's service delivery priorities and investment opportunities in the coming years. The case for addressing the cost of transport to the lower income groups is clearly overwhelming and this is why TCT is committed to halving this cost, as well as the costs of the other user groups within the next 15 years,' said Councillor Herron.

From a media release by the City of Cape Town

---

## Previous Meeting

**Minutes of the Business Meeting on 22 June 2015**

**Scribe: Paul Spiller**

The Sergeant, Chris Beech, opened the meeting at 18h15.

The Club President, Wybe Meinesz, welcomed members and guests Jill Atkins, Rod Palmer, Graham Parkhurst and Gavin Smith.

Richard Burnett read a poem written by the late Jenna Lowe and then did the Object of Rotary.

Regine le Roux then did grace and a toast to RI.

Richard Burnett did the Wine Swindle. The winners were Garnet Carr and Norman Pudney.

### **Spots:**

1. President Wybe presented Kenny van Aardt with his Paul Harris award as Kenny could not attend the induction of the new president, held on Friday 19, June 2015.

2. Bill Holland:
  - a. Informed the meeting that Melinda Stapleton will take over his portfolio in club services.
  - b. Suggested that new tags for partners be acquired. Jenna Monk to obtain samples and costs for discussion at the next meeting.
3. President Wybe apologised to Willie Wijenberg for not informing him that the induction dinner was a formal affair and promised to help improve communication within the club.
4. Graham Lowden indicated that committees should consider proposals before bringing the proposal to the general meeting as this would prevent prolonged debate at the general meetings.
5. Brian Pickup indicated that he would continue with Community Services portfolio for the next 12 months.
  - a. He suggested that we revisit the Christmas event as the attendance was poorer than expected.
  - b. He also suggested that that the Induction Dinners be revisited as he was of the opinion that the fact that the dinner was a formal affair, might be off putting to some of the members.
  - c. He also encouraged all new members to attend board meetings as this was a good way to learn about the functioning of the club.
6. Colin Burke thanked all for a great induction dinner.
7. Jenna Monk thanked all those involved in organising the dinner.
8. Melinda Stapleton indicated that Vanessa Rousseau would be taking over Attendance. Members were asked to take note of her email address and to respond timeously.
9. Jan Kaars-Sijpesteijn announced that he would be moving to Prince Albert and would thus be leaving the club. He thanked all for their fellowship.
10. Graham Parkhurst, our AG from Kromboom Rotary Club, thanked the meeting for their hospitality and wished Colin Burke well during the next 12 months.
11. Regine le Roux handed the wooden spoon to Johan Beukman for his sterling effort as MC at the induction dinner.
12. President Wybe thanked Chris Beech and Colin Burke for organising the Induction Dinner.

The Sergeant closed the meeting at 20h00.

---

### **How's that?**

A man meets a friend whom he hasn't seen in 20 years. "You look fantastic!" he says. "How do you stay so fit?"

The friend says, "I have one rule. I don't argue with people."

The man says, "Come on! How could that account for it?"

The friend says, "You're right, that couldn't possibly account for it."

---

## Stirrer's Spoon

Johan Beukman

[Newlands Rotary Club Runner Calendar](#)

### FUTURE FIXTURES

Year Planner

Please advise the secretary promptly of any additions or changes

#### June 2015

Mon 29 Ordinary

#### July 2015

Mon 6 Partners

Mon 13 Ordinary

Mon 20 Ordinary

Mon 27 Business

#### August 2015

Mon 3 Partners

Mon 10 Ordinary

Mon 17 Ordinary

Mon 24 Business

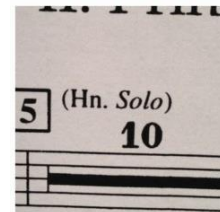
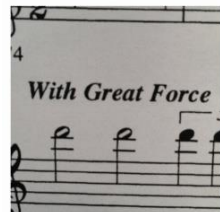
## Happy Birthday

29 June  
Adrienne de Jongh

## Happy Anniversary

30 June  
Melinda & Graham Stapleton

STAR WARS  
Suite for Orchestra



## UMPIRES AND SCORERS

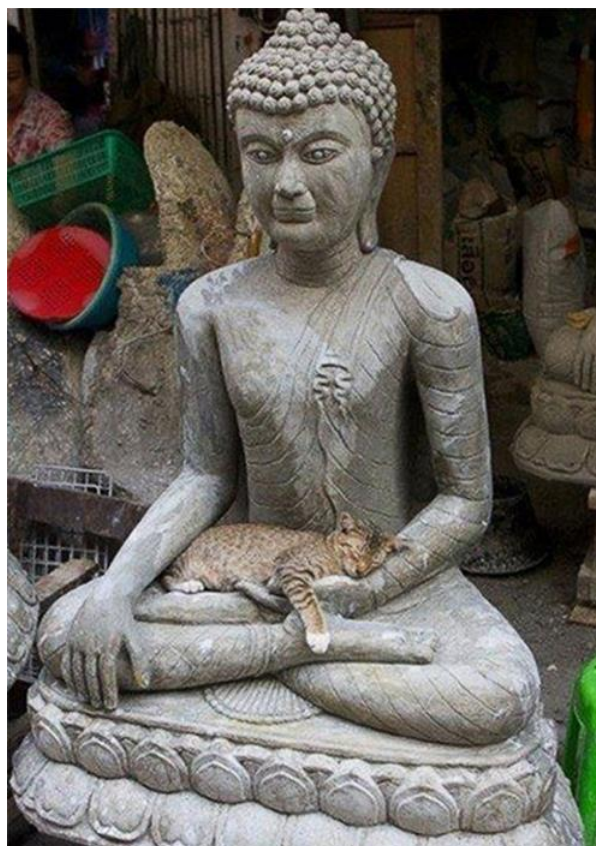
DATE	29 June	6 July	13 July	20 July
MEETING	Ordinary	Partners	Ordinary	Ordinary
SERGEANT	Jenny Howard	TBA	TBA	TBA
4 WAY TEST/ OBJECT	Norman Pudney	Bill Meyer	Willie Wijenberg	Peter Henshilwood
GRACE & TOAST	Menno de Wet	Shân Biesman- Simons	Nora See	Richard Burnett
ATTENDANCE	Heidi Andersson	Lucian Pitt	Daphne Lyell	Brian Pickup
FELLOWSHIP	John Stephenson	Jenna Monk	Pieter van Aswegen	Peter Ennis
MINUTES	Andy Ismay	Jenny Ibbotson	Graham Lowden	Glynis Menné
COMMENT	Christine Calothi	Janey Ball	Terry Lancaster	Regine le Roux
THANK SPEAKER	Rochelle Malherbe	Michael Walwyn	Jana Forrester	Paul Spiller
INTRO SPEAKER	Johan Beukman	Mike Young	Jenny Ibbotson	Wybe Meinesz

### Invited GUEST SPEAKERS

- 29 Jun **Annette Jahnel** –  
*Driving humanity back  
into the economy*
- 6 Jul **Hein Gerstner** – *Eco  
Hotel Verdi*
- 13 Jul **Maggi Golding &  
students** – *Makaton /  
Autism*

If you cannot do your job on the day, please find someone who can do it instead of you, then contact the Sergeant on the day to update the roster. Please don't leave this until the Monday afternoon – let the Sergeant know in advance if you have not been able to arrange a swap. If you are going to be away for particular future meetings let Peter Ennis know.

**Cat Nirvana**



---

## Rotary Club of Newlands Office Bearers

Wybe Meinesz	President`	wybe@insectcontrol.co.za
Lucian Pitt	Secretary	secretary@newlands.org.za
Peter Ennis	Treasurer	treasurer@newlands.org.za
Colin Burke	President Elect	colinburke@mweb.co.za
Brian Pickup	Community Services	brianp@automac.co.za
Bill Holland	Club Services	bholland@wbs.co.za
Menno de Wet	Past President	menno.tricorp@gmail.com
Johan Beukman	Youth Services	jbeukman@netactive.co.za
Jenny Ibbotson	International & Vocational	jennyi@mweb.co.za
Chris Beech	Membership	chris@aaam.co.za
Regine le Roux	Public Relations	rotary@reputationmatters.co.za

---