

THE ROTARY FOUNDATION OF ROTARY INTERNATIONAL

# The Rotary Foundation Reference Guide



# Contents

<b>PolioPlus</b>	<b>4</b>
PolioPlus grants	4
PolioPlus Partners grants	4
PolioPlus resources	5
<b>Rotary Peace Fellowships</b>	<b>6</b>
<b>Grants</b>	<b>8</b>
District grants	8
Global grants	8
Packaged grants	9
Areas of focus	9
Sustainability	11
Scholarships	11
Vocational training teams	11
Qualification and stewardship	12
Grant application process	13
Reporting	13
Training and resources	13
<b>Rotary Foundation Alumni</b>	<b>14</b>
<b>Foundation Funding</b>	<b>15</b>
Annual Fund and SHARE	15
Permanent Fund	16
<b>Recognition</b>	<b>17</b>
Individual recognition opportunities	17
Club recognition opportunities	20
Contribution resources	21
<b>Foundation Awards</b>	<b>23</b>
The Rotary Foundation District Service Award	23
The Rotary Foundation Citation for Meritorious Service	23
The Rotary Foundation Distinguished Service Award	23
Service Award for a Polio-Free World	23
<b>General Resources</b>	<b>24</b>
Member Access	24
Where to direct questions	25
Zone resources	25
District resources	25
How do I make a contribution?	26



# The Rotary Foundation

The mission of The Rotary Foundation is to enable Rotarians to advance world understanding, goodwill, and peace through the improvement of health, the support of education, and the alleviation of poverty. The Foundation is a not-for-profit corporation supported solely by voluntary contributions from Rotarians and friends of the Foundation who share its vision of a better world. This support is essential to make possible Foundation grant-funded projects that bring sustainable improvement to communities in need.

# PolioPlus

Polio eradication is Rotary's top philanthropic priority. When Rotary launched the PolioPlus program in 1985, there were more than 350,000 polio cases in over 125 countries. Since 1988, Rotary has worked with its partners in the Global Polio Eradication Initiative to help immunize more than 2.5 billion children and reduce the incidence of polio by 99 percent. Rotary has contributed more than US\$1 billion to the global eradication effort.

## POLIOPLUS GRANTS

**Purpose** PolioPlus grants support global polio eradication efforts in polio-endemic countries and those that have imported the disease or are at high risk for it. Activities include conducting National Immunization Days and monitoring poliovirus transmission.

**Funding** PolioPlus grants are funded by the general PolioPlus Fund and District Designated Fund contributions.

**Application** Proposals are submitted primarily by major partner agencies, such as the World Health Organization or UNICEF, or national PolioPlus committee chairs (listed in the *Official Directory* [007-EN]).

**Decision** Trustees approve PolioPlus grants at regularly scheduled meetings.

## POLIOPLUS PARTNERS GRANTS

**Purpose** PolioPlus Partners grants support urgent social mobilization and surveillance projects submitted by Rotarians in polio-endemic, importation, and high-risk countries.

**Funding** PolioPlus Partners grants are funded by the general PolioPlus Fund.

---

**Application**

Grant applications are accepted only from national PolioPlus committee chairs in priority countries.

---

**Decision**

Grants are approved on a rolling basis.

**POLIOPLUS RESOURCES**

- *End Polio Now Video and Digital Resources* (942-USB): Provides an overview of Rotary's efforts to eradicate polio
- *End Polio Now Brochure* (940-EN): Describes Rotary's commitment to eradicating polio and encourages support
- *End Polio Now Poster* (941-EN): Describes Rotary's commitment to eradicating polio and encourages support
- *End Polio Now Pins* (988-MUP): Lapel pins with the End Polio Now logo

For information on how to order resources, see "General Resources" in this guide.

---

# Rotary Peace Fellowships

---

---

**Purpose** Rotary Peace Fellowships enable individuals to pursue a graduate degree in international relations, peace, conflict resolution, and related subjects, or a professional development certificate in peace and conflict studies at one of the six Rotary Peace Centers.

---

**Funding** Fellowships cover transportation, tuition, qualified internships, room and board, and other limited expenses for the duration of the program. Fellowships are supported globally through a pool of funds contributed by districts from their DDF and through restricted gifts and the World Fund.

---

**Application** District submits a Rotary Peace Fellowship Application (083-EN).

---

**Deadlines** District can submit an unlimited number of qualified applications to The Rotary Foundation by 1 July for world-competitive selection. Check with the district Rotary Peace Fellowships subcommittee chair for your district's deadline.

---

**Criteria for success** A candidate should have

- A bachelor's degree or equivalent for a master's degree program; a strong academic background for a professional certificate program
- Work or service experience in relevant fields
- English proficiency for both the master's degree and certificate programs, and knowledge of a second language for master's degree
- A demonstrated commitment to peace and international understanding



---

**Decision**

Up to 60 master's degree and 50 professional development certificate fellows from around the world are selected annually. Trustee-approved applicants receive confirmation by 15 December.

---

**Ineligibility**

The following are not eligible for fellowships: Rotarians; honorary Rotarians; employees of a club, district, or other Rotary entity, including Rotary International; spouses, lineal descendants (children or grandchildren by blood, legal adoption, or marriage without adoption), spouses of lineal descendants, or ancestors (parent or grandparent by blood) of any living person in the foregoing categories. However, such individuals are eligible to apply for the short-term professional development program at Chulalongkorn University in Bangkok, Thailand.

---

# Grants

---

Rotary Foundation grants support Rotarians' efforts to change lives and serve communities. Rotary's grant model includes:

## **DISTRICT GRANTS**

District grants are block grants that enable clubs and districts to address immediate needs in their communities and abroad. Districts may request up to 50 percent of their District Designated Fund (DDF) for one grant annually (see “Annual Fund and SHARE” in this guide). Districts manage and disburse these funds to support district- and club-sponsored activities, including vocational training teams, scholarships, humanitarian service projects, and cultural exchanges, provided they are aligned with the Foundation's mission.

## **GLOBAL GRANTS**

Global grants offer clubs and districts opportunities to participate in strategically focused, high-impact activities. These grants fund large-scale international humanitarian projects, vocational training teams, and scholarships that have sustainable, measurable outcomes in one or more areas of focus. Activities may be carried out individually or in combination — for example, one grant may support a vocational training team and a related humanitarian project.

Global grant projects must have a total budget of US\$30,000 or more. This includes the World Fund award, which is based on a 100 percent match of DDF allocations or a 50 percent match of cash contributions from the sponsors. All global grants must be sponsored by two clubs or districts: a host partner in the country where the activity takes place and an international partner outside that country.

When planning a global grant project, sponsors should conduct a thorough needs assessment that explores the pressing concerns in the project location along with the club and community resources available to address them.

## PACKAGED GRANTS

Packaged grants support predesigned projects developed by the Foundation and its strategic partners, which are organizations that work in one or more of Rotary's areas of focus and can offer financial support, technical expertise, or advocacy. The Foundation and the strategic partner provide 100 percent of the funding; Rotarians implement the grant project. Packaged grant options and current strategic partners are detailed online.

Note: Effective 1 July 2013, District Simplified Grants and Matching Grants are no longer part of the grant model.

## AREAS OF FOCUS

All projects, scholars, and vocational training teams funded by global grants and packaged grants work toward specific goals in one or more of the following areas of focus:



### Peace and conflict prevention/resolution

- Providing training for leaders, including young potential leaders, in prevention and mediation of conflict
- Supporting peace-building in communities and regions affected by conflict
- Supporting studies related to peace and conflict prevention/resolution by career-minded professionals



### Disease prevention and treatment

- Improving the capacity of local health care professionals
- Supporting disease prevention programs, with the goal of limiting the spread of communicable diseases and reducing the incidence of and complications from noncommunicable diseases
- Enhancing the health infrastructure of local communities
- Educating and mobilizing communities to prevent the spread of major diseases
- Preventing physical disability resulting from disease or injury
- Supporting studies related to disease prevention and treatment by career-minded professionals

# Grants



## Water and sanitation

- Providing equitable access to safe water, improved sanitation, and hygiene
- Strengthening the ability of communities to develop, fund, and maintain sustainable water and sanitation systems
- Supporting programs that enhance communities' awareness of the benefits of safe water, sanitation, and hygiene
- Supporting studies related to water and sanitation by career-minded professionals



## Maternal and child health

- Reducing mortality and morbidity rates for children under the age of five
- Reducing maternal mortality and morbidity rates
- Improving mothers' and children's access to essential medical services, trained community health leaders, and health care providers
- Supporting studies related to maternal and child health by career-minded professionals



## Basic education and literacy

- Involving the community to support programs that strengthen the capacity of communities to provide basic education and literacy to all
- Increasing adult literacy
- Working to reduce gender disparity in education
- Supporting studies related to basic education and literacy by career-minded professionals



## Economic and community development

- Building the capacity of entrepreneurs, community leaders, local organizations, and community networks to support economic development in impoverished communities
- Developing opportunities for productive work
- Reducing poverty in underserved communities
- Supporting studies related to economic and community development by career-minded professionals

## SUSTAINABILITY

Sustainability means different things to different organizations. For The Rotary Foundation, sustainability means providing solutions to community needs that ensure that the benefiting community can maintain the activities after grant funding ends. Global grant projects must be sustainable and display the following characteristics:

- **Community needs** — The host community and Rotary project sponsors develop projects based on the host community's assessment of its needs and strengths
- **Appropriate technology** — Project materials are appropriate for the community and, ideally, are purchased locally
- **Sustainable funding** — The community is able to sustain the project without ongoing financial support from The Rotary Foundation or other Rotary sources
- **Knowledge transfer** — The project includes teaching beneficiaries how to address their ongoing needs after the completion of the project
- **Motivation** — The community is able to assume ownership of the project upon its completion
- **Monitoring and evaluation** — The project includes a measurement plan to confirm significant improvement, ideally for at least three years

## SCHOLARSHIPS

Scholarships can be funded by district grants, global grants, and, in some cases, packaged grants. District grants have no restrictions on the educational level of the scholarship (e.g., undergraduate or graduate), duration of the program, or field of study. Districts may develop their own criteria for selecting scholars, determine the monetary amount of the awards, and support students attending local universities, as there is no international requirement.

Global grants, as well as some packaged grants, support international graduate-level study related to an area of focus for one to four years.

## VOCATIONAL TRAINING TEAMS

Vocational training teams can be supported by district grants, global grants, and, in some cases, packaged grants. Teams sponsored by district

---

# Grants

---

grants have no restrictions on participant age or the duration or focus of the exchange.

Global grants, as well as some packaged grants, address humanitarian needs by supporting teams that travel abroad to provide or receive robust training in one or more areas of focus. At least one team leader, preferably a Rotarian, and two members are required per team. There is no maximum team size or age restriction, but all team participants should have relevant professional skills and experience.

Global grant-sponsored teams may provide or receive training in various settings, including universities, hospitals, and companies, and may stay in a range of places, such as Rotarians' homes, university dormitories, and hotels. Training may last for any length of time, and more than one team may travel on a single grant. Training team costs must meet the US\$30,000 global grant minimum for total project cost including team member expenses and other grant activities.

## **QUALIFICATION AND STEWARDSHIP**

### What districts must do

To participate in district, global, and packaged grants, districts must complete an online qualification process, in which they agree to follow and implement the financial and stewardship guidelines in the district memorandum of understanding (MOU). Each district must also conduct a grant management seminar as part of the qualification process for clubs.

Each district is responsible for providing careful stewardship of Foundation funds. The requirements detailed in the district MOU include the following:

- Have a written financial management plan
- Plan activities thoroughly and involve Rotarians directly in project implementation
- Demonstrate transparency in all financial transactions
- Report on the use of the District Designated Fund to clubs each year
- Submit reports to the Foundation promptly
- Develop a method for reporting and resolving misuse of grant funds

## What clubs must do

Clubs must complete an annual qualification process to be eligible for global and packaged grants. To qualify, clubs must send one or more members to the district's grant management seminar, sign and adhere to the club memorandum of understanding, and fulfill any additional qualification requirements set by the district. Clubs are also expected to comply with the stewardship requirements detailed in the club MOU.

## GRANT APPLICATION PROCESS

Once they are qualified, clubs and districts may submit grant applications online.

District grants follow a two-year business model: Planning and applying happen during the first year, and projects take place during the second.

The Rotary Foundation administers global grants through a two-step application process. The first step gives sponsors an opportunity to confirm that their project meets global grant requirements. This ensures that sponsors are familiar with the Foundation's eligibility standards before they spend significant time preparing a grant application. In the second step, applicants provide all the information necessary for the Foundation to make a grant award decision.

Packaged grant application requirements vary by grant opportunity; details are available online.

## REPORTING

Districts are required to submit a report to the Foundation and to all clubs in the district on the disbursement of funds within 12 months of receiving a district grant. Global grant sponsors must submit progress reports every 12 months for the life of the grant and a final report within two months of the grant's completion.

## TRAINING AND RESOURCES

Learn more about The Rotary Foundation grant model and subscribe to the monthly newsletter at [www.rotary.org/grants](http://www.rotary.org/grants).

# Rotary Foundation Alumni

More than 116,000 people have received program awards from the Foundation since 1947. Foundation alumni include former Ambassadorial Scholars and global grant scholars as well as Rotary Peace Fellows, Group Study Exchange and vocational training team leaders and members, and recipients of Rotary Grants for University Teachers and various Rotary volunteer grants.

As talented, committed individuals, Foundation alumni know Rotary well and share its vision of furthering world understanding and peace. Alumni are powerful advocates for the Foundation because they put a human face on Rotary activities and demonstrate a commitment to the world community. They serve as volunteers for community and international service projects and are potential Rotary club members and donors to the Foundation. They are available to speak at Rotary functions or participate in Rotary programs. (Contact your district alumni subcommittee chair or district Rotary Foundation chair to find Foundation alumni available for speaking engagements or club activities.)

Consider nominating an outstanding Foundation alumnus for the Global Alumni Service to Humanity Award, the Foundation's highest alumni honor. Each Rotary district may nominate one qualified alumnus per year.

Rotary Foundation alumni associations, which are chapters of the Rotary Foundation Alumni Network, are groups of alumni who unite to pursue service and fellowship. There are dozens of active alumni associations worldwide, and the number is growing. Consider nominating an association in your area for the Alumni Association of the Year Award, an honor given to an outstanding group that promotes Service Above Self within the Rotary family. If there isn't an alumni association in your area, consider starting one.



# Foundation Funding

## ANNUAL FUND AND SHARE

### Purpose

Annual Fund-SHARE is the primary source of funding for a broad range of local and international Rotary Foundation activities.

Every Rotarian, Every Year (EREY) is the fundraising campaign to encourage support for the Foundation's Annual Fund. EREY aims to engage every Rotary club member by

- Encouraging *every Rotarian* to contribute to the Annual Fund *every year*
- Encouraging *every Rotarian* to participate in a Foundation grant or program *every year*

### How fund works

Through the SHARE system, contributions to The Rotary Foundation are transformed into grants that change lives.

At the end of every Rotary year, contributions to the Annual Fund-SHARE from all Rotary clubs in a district are divided into two funds:

- Fifty percent is credited to the World Fund.
- Fifty percent is credited to the District Designated Fund.

The Foundation uses the World Fund portion to pay for the worldwide grant and program opportunities available to all Rotary districts. Your district uses the DDF portion to fund the Foundation grants and programs of its choice.

The Rotary Foundation's funding cycle makes district contributions available three years after they are received. The three-year cycle gives districts time to plan projects and activities and allows the Foundation to invest the contributions. The earnings from those investments help pay for general administration and fund development expenses.

# Foundation Funding

Your district Rotary Foundation committee decides how to use the district's DDF allocations in consultation with the clubs in the district. Districts may choose to use up to 50 percent of their DDF for district grants. Remaining DDF may be used for global grants or donated to PolioPlus, the Rotary Peace Centers, or another district.

In addition to SHARE, donors may designate their Annual Fund contributions directly to the World Fund or to one of the Foundation's six areas of focus. Annual Fund contributions directed to any of the areas of focus are credited toward a club's annual giving goal and per capita giving calculations. Likewise, these contributions are eligible for all Annual Fund recognition opportunities, including EREY, Rotary Foundation Sustaining Member, Paul Harris Fellow, Paul Harris Society, Major Donor, and Arch C. Klumph Society. They also count toward all club recognition opportunities.

Contributions designated for areas of focus are *not* included in a district's SHARE calculation and do *not* generate any increases in the amount of the District Designated Fund. Because Annual Fund-SHARE contributions are the primary source of funding for Foundation grants, SHARE-designated contributions from Every Rotarian, Every Year remain crucial and therefore are strongly encouraged.

## PERMANENT FUND

### Purpose

Ensures the long-term viability of the Foundation and its grants and programs. Spendable earnings from this endowed fund enable the Foundation to expand existing activities and underwrite new ones. The Permanent Fund also supports the Rotary Peace Centers.

### How fund works

Contributions are invested in perpetuity. A percentage of the total value of the fund is spent annually to benefit Foundation grants and programs.

### Types of contributions

- Outright gifts of property, cash, or investments
- Life income gifts (e.g., charitable remainder trusts, charitable gift annuities, pooled income funds)
- Testamentary gifts through wills or estate plans or life insurance policies

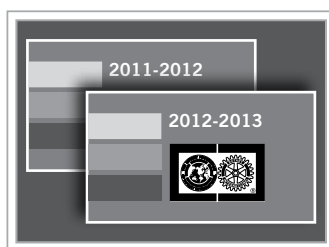
# Recognition

The Rotary Foundation shows its appreciation to individuals and clubs for personal outright contributions supporting its humanitarian and educational activities. (All figures are in U.S. dollars.)

## INDIVIDUAL RECOGNITION OPPORTUNITIES

### Rotary Foundation Sustaining Member

A Rotary Foundation Sustaining Member is an individual who contributes \$100 or more each year to the Annual Fund. These contributions also count toward Paul Harris Fellow, Multiple Paul Harris Fellow, Paul Harris Society, Major Donor, and club recognition. Contact your Rotary club president to obtain the annual Sustaining Member badge sticker, which Rotary gives in appreciation of this achievement.



### Paul Harris Fellow

Paul Harris Fellow recognition is given in appreciation to anyone who contributes (or in whose name is contributed) \$1,000 or more cumulatively to the Annual Fund, PolioPlus, or an approved Foundation grant. Paul Harris Fellow recognition consists of a certificate and pin. An optional medallion is available for \$15.



### Certificate of Appreciation

Occasionally, a donor contributes \$1,000 and wishes to recognize a business or organization. In these instances, a Certificate of Appreciation is given instead of Paul Harris Fellow recognition, which is only for individuals.

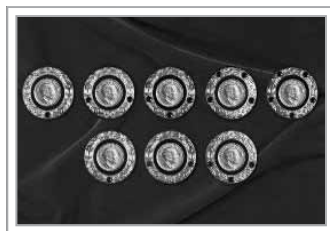


# Recognition

## Multiple Paul Harris Fellow

Multiple Paul Harris Fellow recognition is given at subsequent \$1,000 levels. Recognition consists of a pin set with additional stones corresponding to the recipient's contribution amount.

- \$2,000 to \$2,999.99 — one sapphire
- \$3,000 to \$3,999.99 — two sapphires
- \$4,000 to \$4,999.99 — three sapphires
- \$5,000 to \$5,999.99 — four sapphires
- \$6,000 to \$6,999.99 — five sapphires
- \$7,000 to \$7,999.99 — one ruby
- \$8,000 to \$8,999.99 — two rubies
- \$9,000 to \$9,999.99 — three rubies



## Paul Harris Society

The Paul Harris Society recognizes individuals who contribute at least \$1,000 each year to the Annual Fund, PolioPlus, or an approved Foundation grant. Because individual districts handle all associated recognition for this program, inquiries should be directed to the district. Paul Harris Society contributions count toward Rotary Foundation Sustaining Member, Paul Harris Fellow, Multiple Paul Harris Fellow, Major Donor, and Arch C. Klumph Society recognition.



## Major Donor

The Rotary Foundation recognizes individuals or couples whose combined giving has reached \$10,000, regardless of the gift designation. This recognition level can be achieved only through personal contributions and not through recognition points. Major Donors may elect to receive a crystal recognition piece and pin(s) commemorating the gift at each new recognition level.

- \$10,000 to \$24,999.99 — level 1
- \$25,000 to \$49,999.99 — level 2
- \$50,000 to \$99,999.99 — level 3
- \$100,000 to \$249,999.99 — level 4



## Arch C. Klumph Society

Donors who contribute \$250,000 or more become members of the Arch C. Klumph Society. Portraits, biographies, and in some cases video clips are housed in the society's interactive galleries one of which is located at RI World Headquarters, while the other travels to Rotary events around the world. Members also receive lapel pins and pendants, signed certificates, and invitations to the society's exclusive events held worldwide. New members are invited to a special induction ceremony at RI World Headquarters.

- Trustees Circle — \$250,000 to \$499,999.99
- Chair's Circle — \$500,000 to \$999,999.99
- Foundation Circle — \$1,000,000 and more



# Recognition

## Benefactor

A Benefactor is an individual who informs The Rotary Foundation in writing that he or she has made a provision for the Foundation in his/her estate plan or makes an outright gift of \$1,000 or more to the Permanent Fund. Benefactors receive a certificate and insignia to be worn with a Rotary or Paul Harris Fellow pin.



## Bequest Society

The Rotary Foundation recognizes couples or individuals who have made commitments in their estate plans totaling \$10,000 or more. Donors may elect to receive an engraved crystal recognition piece and a pin commemorating the commitment at each new recognition level.



- \$10,000 to \$24,999.99 — level 1
- \$25,000 to \$49,999.99 — level 2
- \$50,000 to \$99,999.99 — level 3
- \$100,000 to \$249,999.99 — level 4
- \$250,000 to \$499,999.99 — level 5
- \$500,000 to \$999,999.99 — level 6
- \$1,000,000 and more — level 7



## CLUB RECOGNITION OPPORTUNITIES

### Every Rotarian, Every Year Club

This banner is awarded to clubs that achieve a minimum of \$100 in per capita giving and 100 percent participation, with every active (dues-paying) member contributing some amount to the Annual Fund during the Rotary year. This annual recognition is awarded at the end of the Rotary year.



## 100% Paul Harris Fellow Club

In order for a club to be eligible, every active (dues-paying) member must be a Paul Harris Fellow when banner recognition is requested. To obtain this recognition, a club leader contacts the district governor, confirming the club's eligibility. The district governor then submits a recognition request to The Rotary Foundation. The club receives a banner, and its name is included on the list of 100% Paul Harris Fellow Clubs at [www.rotary.org](http://www.rotary.org). This one-time-only banner recognition is awarded throughout the Rotary year.



## 100% Rotary Foundation Sustaining Member Club

This banner is awarded to clubs that achieve \$100 in per capita giving, in which every active member of the club personally contributes \$100 or more to the Annual Fund during the Rotary year. This annual recognition is awarded at the end of the Rotary year.



## Top Three Per Capita Clubs in Annual Fund Giving

Banners are given to the top three per capita giving clubs in each district. To be eligible, clubs must achieve a minimum of \$50 in per capita annual giving. This banner is awarded at the end of the Rotary year.



## CONTRIBUTION RESOURCES

*Ways to Give* (173-EN): Brochure providing an overview of Annual Fund, Permanent Fund, term gift, and Rotary Peace Centers endowed naming opportunities

*Every Rotarian, Every Year Brochure* (957-EN): Brochure for distribution to every club member, outlining the need for Rotarians to participate in and contribute to Rotary Foundation grants and activities

# Recognition

*Every Rotarian, Every Year Rotary Foundation Sustaining Member Badge Stickers* (956-EN): Stickers for donors who become Rotary Foundation Sustaining Members with Annual Fund contributions of \$100 or more each year

*Every Rotarian, Every Year newsletter*: Free subscription at [www.rotary.org/newsletters](http://www.rotary.org/newsletters)

*Doing Good in the World DVD* (978-DVD-MU): Videos showing how the Foundation and its partners are achieving sustainable results in Rotary's six areas of focus — and how you can help

*Paul Harris Society Brochure* (099-EN): Promotes the Paul Harris Society program, which recognizes donors who make a commitment to contribute \$1,000 or more annually to the Annual Fund, PolioPlus, or approved Foundation grants

*Peace Is Possible* (811-EN): Brochure providing an overview of the Rotary Peace Centers and available naming opportunities

For information on how to order resources, see “General Resources” in this guide.



# Foundation Awards

## **THE ROTARY FOUNDATION DISTRICT SERVICE AWARD**

Nominators: District governors    Deadline: Ongoing

Because so many Rotarians serve humanity through Foundation programs, The Rotary Foundation created the District Service Award to recognize their efforts. Each recipient is given a certificate, awarded at the district level. District governors may obtain up to 20 blank certificates at no cost to their district.

## **THE ROTARY FOUNDATION CITATION FOR MERITORIOUS SERVICE**

Nominators: District governors    Deadline: Ongoing

This award recognizes Rotarians who have demonstrated active service to The Rotary Foundation for more than one year. See the nomination form for complete criteria.

## **THE ROTARY FOUNDATION DISTINGUISHED SERVICE AWARD**

Nominators: Any Rotarian    Deadline: 15 November

Four complete Rotary years after receiving the Citation for Meritorious Service, a Rotarian becomes eligible for the Distinguished Service Award. Because this is the Foundation's highest service recognition, a recipient's exemplary service to the Foundation must extend beyond the district level and occur over an extended period of time. See the nomination form for complete criteria.

## **SERVICE AWARD FOR A POLIO-FREE WORLD**

Nominators: Any Rotarian    Deadline: 1 November

This award was established by the Trustees of The Rotary Foundation in order to recognize outstanding contributions to the polio eradication effort by Rotarians and thereby to encourage final efforts. In geographic areas coinciding with WHO regions, up to 10 service awards per region are given annually. These awards recognize outstanding service in polio eradication. International awards, for broad service to the cause of polio eradication, are also made annually, not to exceed 10 individuals. See the nomination form for complete criteria.

All nominations forms and certificates are available for download from [www.rotary.org](http://www.rotary.org); or contact the RI staff for further help at [riawards@rotary.org](mailto:riawards@rotary.org).

# General Resources

## MEMBER ACCESS

Member Access at [www.rotary.org](http://www.rotary.org) offers Rotarians various online services in a secure, password-protected environment to ensure that personal information remains confidential.

Feature	President	Secretary	Rotary Foundation Committee Chair	Treasurer
Contribute to The Rotary Foundation	•	•	•	•
View your contribution history	•	•	•	•
Search the online <i>Official Directory</i>	•	•	•	•
Manage email preferences	•	•	•	•
Register for meetings	•	•	•	•
View daily club balance report	•	•		•
Pay semiannual dues or print semiannual report	•	•		•
View current semiannual report	•	•	•	•
View club recognition summary (for your own club only)	•	•	•	•
View Monthly Contribution Report, SHARE, and polio reports	•	•	•	•
View EREY Eligibility Report	•	•	•	•
Update membership data	•	•		
Update club data	•	•		
Submit membership, service, and Foundation giving goals via Rotary Club Central	•			

Rotary Club Central is a tool within Member Access that helps clubs set goals and track their accomplishments online. This tool helps measure Rotary's global impact in several areas, such as membership growth and activities, community service hours, and Rotary Foundation fundraising activities.

Rotary Foundation resources can be ordered online at [shop.rotary.org](http://shop.rotary.org), or from Publications Order Services (email: [shop.rotary@rotary.org](mailto:shop.rotary@rotary.org); phone: +1-847-866-4600; fax: +1-847-866-3276), or from the local Rotary International office.

To learn more, contact your district Rotary Foundation leaders or the Foundation staff.

## **WHERE TO DIRECT QUESTIONS**

Call (+1-866-976-8279) or email ([contact.center@rotary.org](mailto:contact.center@rotary.org)) Rotary's Contact Center to check on contributions and recognition points, find deadlines for grant applications, and ask other questions.

Non-English-speaking Rotarians should contact their local Rotary International office.

## **ZONE RESOURCES**

The regional Rotary Foundation coordinators (RRFCs) are responsible for the promotion of Foundation activities and fundraising for the Foundation in their zone or area. RRFCs train their zone team and district leaders in setting and achieving fundraising and program goals. A list of current RRFCs is available online at [www.rotary.org](http://www.rotary.org).

Zone team members are effective speakers and trainers at regional, district, and club events.

## **DISTRICT RESOURCES**

To provide continuity of leadership, the district Rotary Foundation committee (DRFC) chair is appointed for a three-year term. The three incoming district governors (if selected) scheduled for each year of the DRFC chair's three-year term will participate in selecting the chair. This selection should occur and be reported to the Foundation no later than 1 March before the chair takes office on 1 July of the same calendar year.

---

# General Resources

---

The DRFC chair may be reappointed for another three-year term, provided governors under whom the chair will serve agree. If possible, this post should be filled by a past district governor. (The current district governor cannot serve as the current DRFC chair.) A district does not have access to its DDF until the chair is appointed. The chair serves under the leadership of the district governor, and decisions on the use of DDF must reflect the decisions of the DRFC, which is composed of its subcommittee chairs. The subcommittee chairs are appointed annually by the district governor under whom they will serve:

Polioplus subcommittee chair

Grants subcommittee chair

Fundraising subcommittee chair

Stewardship subcommittee chair

Other subcommittee chairs as deemed necessary by the district

For questions about the DRFC, email [TRF.administration@rotary.org](mailto:TRF.administration@rotary.org).

## HOW DO I MAKE A CONTRIBUTION?

Contributions to The Rotary Foundation may be made by check, credit card, or wire transfer, or through your Rotary club. Individuals and clubs can make a one-time contribution or enroll in the Foundation's recurring giving program, Rotary Direct, at [www.rotary.org/contribute](http://www.rotary.org/contribute). Information on gifts of stocks, bonds, or mutual funds is also available at [www.rotary.org/contribute](http://www.rotary.org/contribute).

Alternatively, individuals and clubs can use *The Rotary Foundation Contribution Form* (123-EN), available online only at [www.rotary.org](http://www.rotary.org).

With all gifts, be sure to use your membership ID number to ensure proper credit and recognition.

The Rotary Foundation is recognized as a 501(c)(3) charity in the United States and may be eligible to receive corporate matching gifts from your employer. Many international companies also match Rotary Foundation contributions from their employees. Ask your human resources department whether your gift can be matched.

If using *The Rotary Foundation Contribution Form*, send your donation to the appropriate address for your region. *In countries with currency restrictions, please contact your district Rotary Foundation chair for guidance.*

## United States

The Rotary Foundation  
14280 Collections Center Drive  
Chicago, IL 60693  
USA

## Canada

The Rotary Foundation (Canada)  
c/o 911600  
P.O. Box 4090 STN A  
Toronto, ON M5W 0E9  
Canada

## Brazil

Rotary International  
Rua Tagipuru 209  
01156-000 São Paulo, SP  
Brazil

## Europe and Africa

Rotary International  
Witikonstrasse 15  
CH-8032 Zurich  
Switzerland

## Germany

Rotary Deutschland Gemeindienst e. V.  
Breite Strasse 34  
40212 Düsseldorf  
Germany

## Great Britain and Ireland

RI in Great Britain and Ireland  
Kinwarton Road  
Alcester  
Warwickshire B49 6PB  
England

# General Resources

## Japan

Rotary International  
NS3 Building, 1F  
2-51-3 Akabane, Kita-ku  
Tokyo 115-0045  
Japan

## Korea

Rotary International  
Room 705, Miwon Building  
43 Yoido-dong, Yongdungpo-gu  
Seoul 150-733  
Korea

## South Asia

Rotary International  
Thapar House  
2nd Floor, Central Wing  
124 Janpath  
New Delhi 110 001  
India

## Southern South America

Rotary International  
Florida 1, P. 2  
1005 Buenos Aires, CF  
Argentina

## South Pacific and Philippines

Rotary International  
Level 2  
60 Phillip Street  
Parramatta, NSW 2150  
Australia



THE ROTARY FOUNDATION



One Rotary Center  
1560 Sherman Avenue  
Evanston, IL 60201-3698 USA  
[www.rotary.org](http://www.rotary.org)

219-EN—(1012)