

The Rotary Foundation of Rotary International

Welcome



Learning Objectives

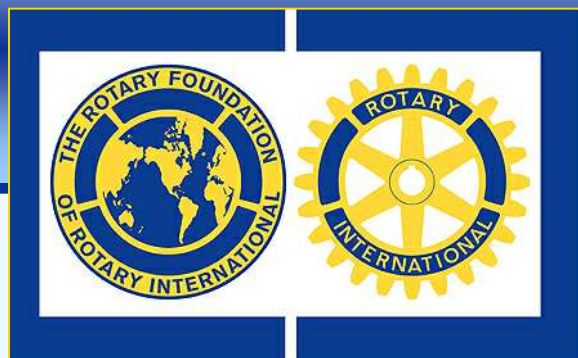
1. Outline the programs and activities of The Rotary Foundation.
2. Understand how contributions to The Rotary Foundation are allocated to fund The Rotary Foundation programs.
3. Help you to plan Foundation involvement for the upcoming year.



Our Mission

The mission of The Rotary Foundation is to enable Rotarians to advance world understanding, goodwill and peace through the improvement of health, the support of education, and the alleviation of poverty.





The Rotary Foundation of Rotary International

How Does it Work?



The Rotary Foundation *IS* Unique

- Addresses all of the greatest educational and humanitarian needs
- Its world reach is greater than the United Nations
- We can go where politicians and religious groups cannot
- The Rotary Foundation is *YOUR* Foundation



Three Needs, Three Ways of Giving



Annual Programs Fund
For Support Today



Permanent Fund
To Secure Tomorrow



PolioPlus: Our Priority

Earns PHF points

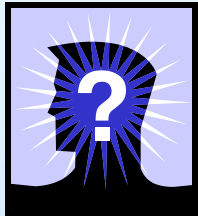
Not part of per Capita or
EREY Giving



2009-10 US\$205 million expenditure

SHARE

What is DDF?



**DDF stands for
“District Designated Fund.”**

**District and Clubs get to use
these funds for Matching &
Simplified Grants and
Ambassadorial Scholars.
GSE extra team member.**

SHARE

Annual Programs Fund Contributions

At the end of the Rotary Year the *SHARE* system allocates the district's contributions to the Annual Programs Fund :

- 50% goes to the World Fund and**
- 50% is credited to the district's DDF. In 3 years**

SHARE

The 3-Year Cycle

TRF operates on a unique funding cycle, using contributions for program activities three years after they are collected

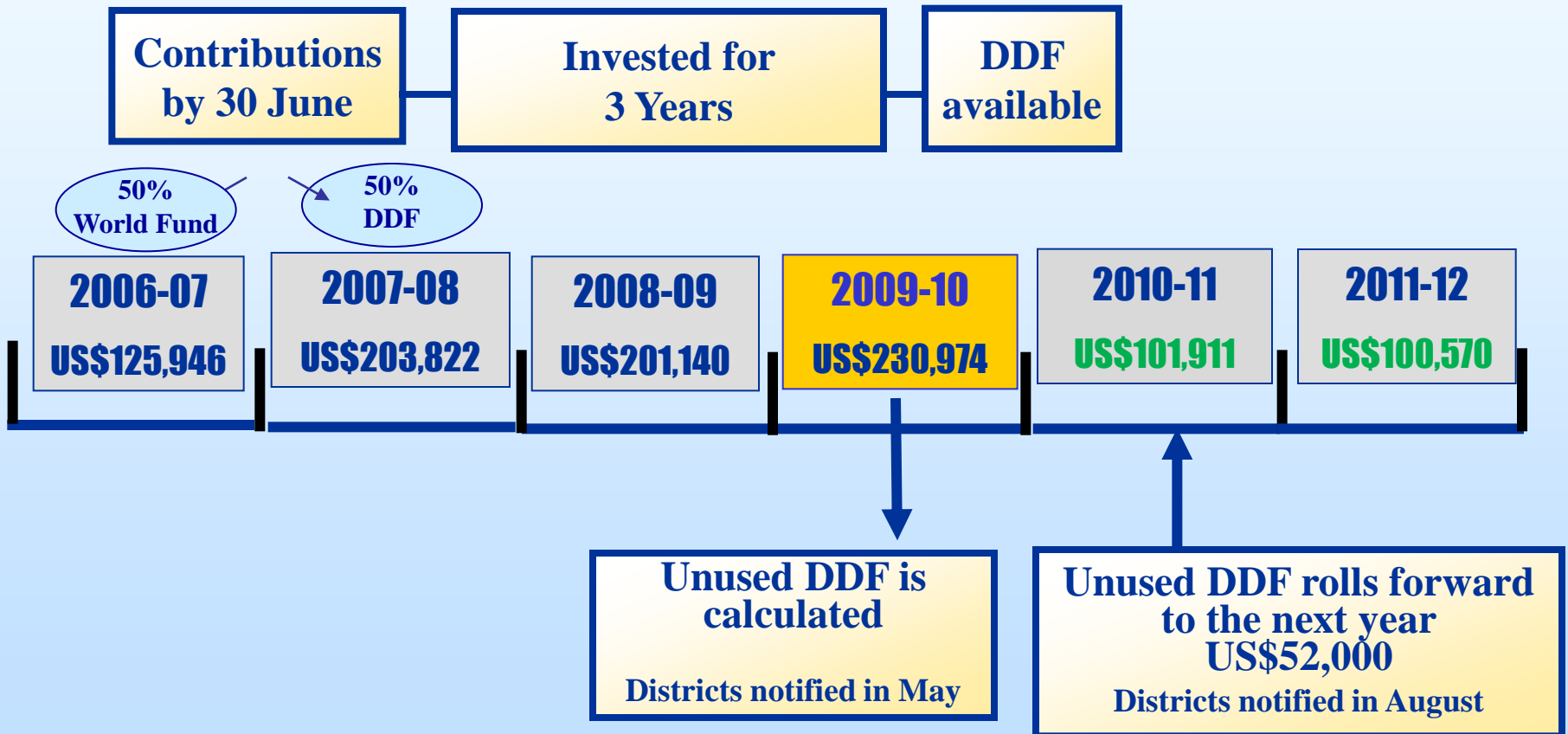
The three-year cycle gives districts time for program planning and participant selection

TRF uses the earnings from *SHARE*'s 3-year investment cycle to pay for administration and fund development



SHARE

How it works



SHARE DDF

D9680 Cash Flow 2009-10

OutFlows: to TRF 2008-09

- Total to APF US\$201,140



SHARE DDF

D9680 Cash Flow 2009-10

<u>InFlows:</u> 2011-12	US\$	<u>OutFlows:</u> to TRF	2008-09
• DSG	20,114	• Total to APF	US\$201,140
• MG ex DDF	30,000		
• Ambassadorial	52,000		
• GSE ex DDF + 1	3,000		
• Polio	10,057		
• Sub Total DDF	115,171		
• MG Dist x TRF 100%	30,000		
• MG Club x TRF 50%	20,000		
• GSE ex TRF	13,000		
• TOTAL	\$152,573		



SHARE DDF

D9680 Cash Flow 2009-10

<u>InFlows:</u> 2011-12	US\$	<u>OutFlows:</u> to TRF 2008-09	
• DSG	20,114	• Total to APF	US\$201,140
• MG ex DDF	30,000	• <u>OutFlows:</u> to TRF 2010-11	
• Ambassadorial	52,000	• Centurions 600	60,000
• GSE ex DDF + 1	3,000	• PHSociety 36	36,000
• Polio	10,057	• Major Donors	50,000
• Sub Total DDF	115,171	• Clubs to APF	110,000
• MG Dist x TRF 100%	30,000	• TOTAL	\$256,000
• MG Club x TRF 50%	20,000	• Polio Eradication	70,000
• GSE ex TRF	13,000	• GRAND TOTAL	\$326,000
• TOTAL	\$152,573		





Annual Giving

Encourage *Every Rotarian*

- To contribute *Every Year* to The Rotary Foundation Annual Programs Fund – tax deductible
- To participate in a Foundation humanitarian or educational project *Every Year*

Encourage *Every Club*

- To set minimum US\$100 per capita APF YTD (2009/10 = US\$122)





Annual Giving

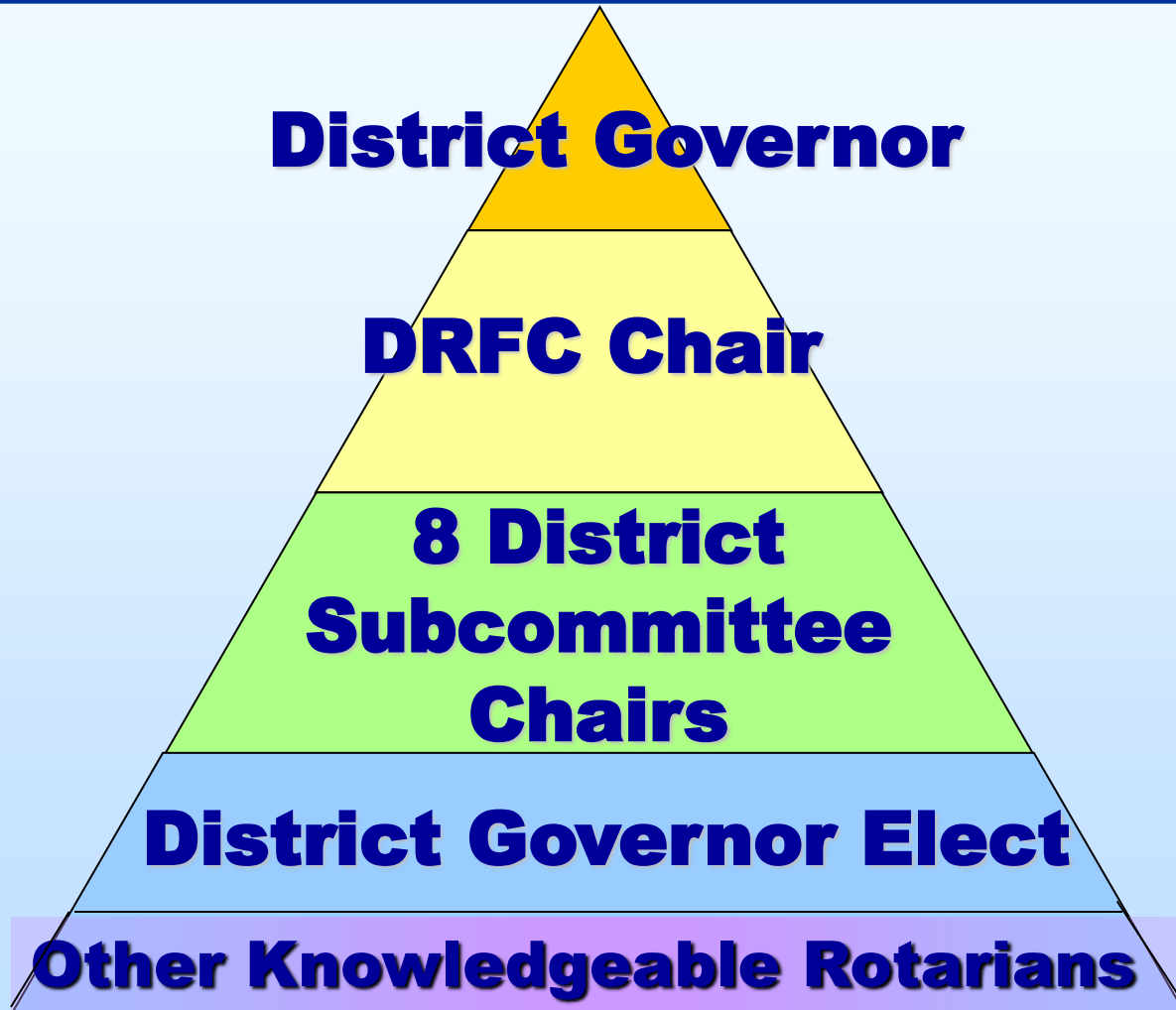
- Builds ongoing support for The Rotary Foundation
- Helps achieve the worldwide goal of US\$100 per capita
- Earns PHF recognition points



DISTRICT LEADERSHIP



District Structure



District Leadership

District Rotary Foundation Committee

Help Desk Consists of:

- 1 Chairperson
- 8 Subcommittee chairpersons
- District Governor (ex-officio member)



8 Subcommittees

District Rotary Foundation Committee Chair

Scholarships

*Rotary World Peace
Fellowships*

*Group Study
Exchange*

Alumni

Grants

PolioPlus

*Annual Giving
Centurion
Paul Harris Society*

Permanent Fund

*Annual Program Fund
Club Contributions*



District Leadership

DRFC Chairperson

- Works with subcommittee chairs under DG's leadership to plan, coordinate and evaluate all TRF activities in the district
- Must have significant knowledge of, commitment to, and experience with TRF activities
- 3-year term to ensure continuity (2009-2012)



District Leadership

DRFC Chairperson

- Works with DRFC members and DG to identify and distribute **DDF**
- Ensures satisfactory final reports on Foundation programs activities are submitted on time
- Encourages contributions to the Annual Programs fund from Every Rotarian Every Year



Effective clubs are able to

**Sustain
and
Increase
Membership**

**Implement
Successful
Service
Projects**

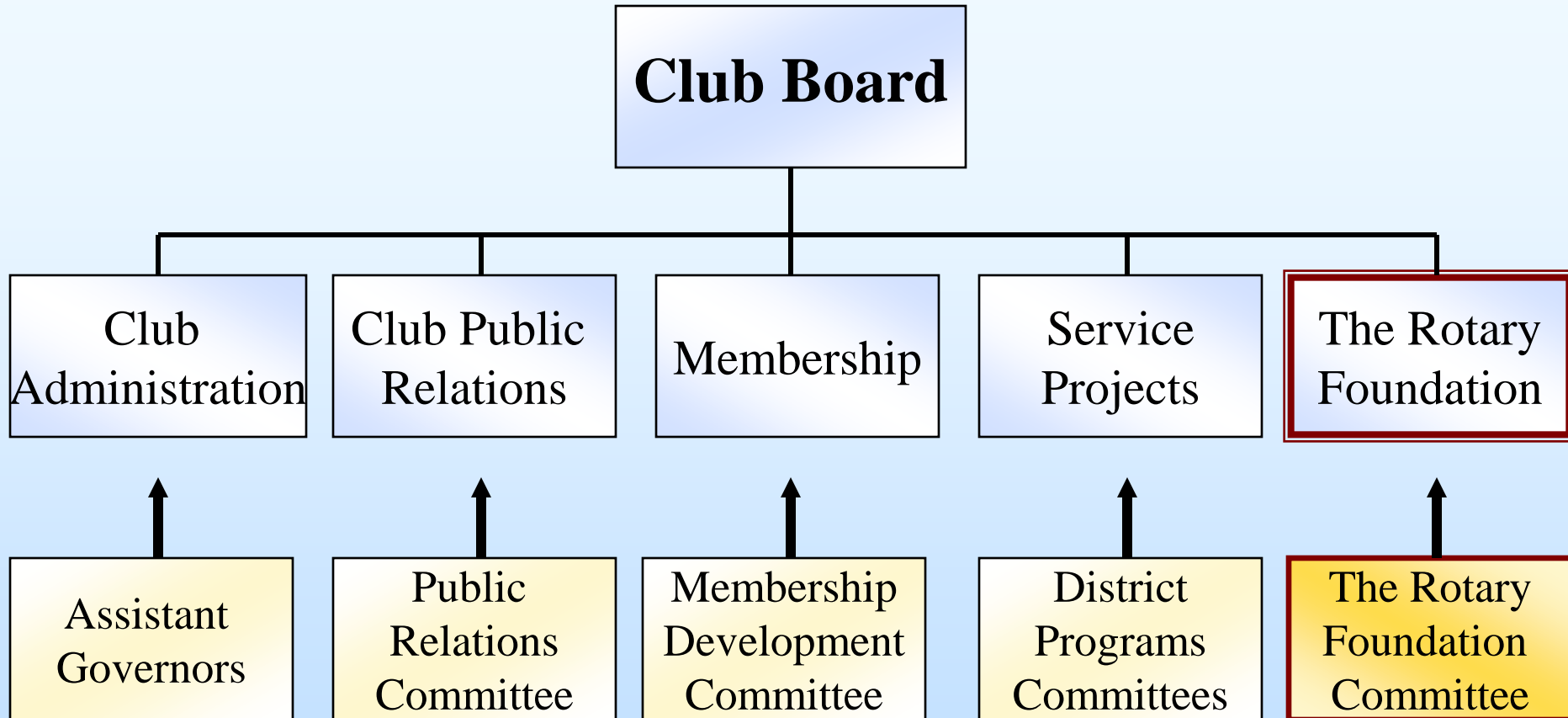
**Support
The Rotary
Foundation**

**Develop
Leaders
Beyond the
Club Level**

Club Leadership Plan

Five Avenues of Service

Club Board



District Support of the Club Leadership Plan



Thank you for your Support!





The Rotary Foundation
of Rotary International

Questions?

How Does it Work?