



**SERVE TO  
CHANGE LIVES**

# Rotary Club of Guelph Trillium 2021-22

Maneesh Jain

TOGETHER we see a  
world where PEOPLE  
unite and take ACTION to  
create lasting CHANGE

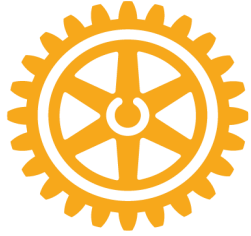
- ▶ across the globe
- ▶ in our communities
- ▶ in ourselves



TRANSITIONS TO ...



**Rotary**

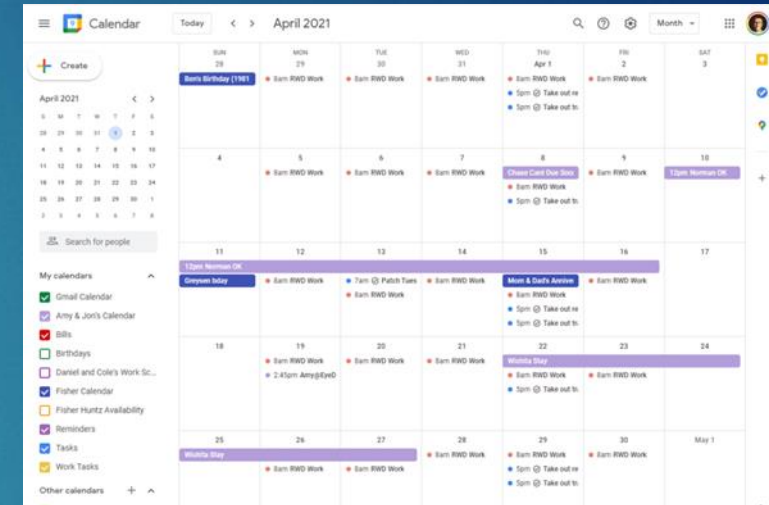


**SERVE TO  
CHANGE LIVES**

- Priority 1: Enhance Member Connectedness
- Priority 2: Expand our Knowledge of Rotary
- Priority 3: Peacebuilder Club/Peace Park
- Priority 4: Capture the Essence of Rotary

# Enhance Member Connectedness

- ▶ Subscribe to Rotary calendar
- ▶ ClubRunner App
- ▶ ClubRunner website
- ▶ Homework
- ▶ Get Connected! meeting





# Expand our knowledge of Rotary:

- ▶ Weekly tidbits about our members, our club and Rotary in general
- ▶ Get some guest speakers to speak about Rotary- we have a wealth of information in our own club.
- ▶ Fun Rotary Jeopardy's throughout the year. Keep listening and reading the weekly bulletin.



# Rotary Peace Park

- ▶ Rotarian Peacebuilder Clubs commit to engage in dialogues and projects that promote positive peace both in their communities and across the globe.
- ▶ ROTARY is the largest peace building organization in the world.
- ▶ 1.2 Million Rotarians
- ▶ 200 countries and territories around the world, more than members of the United Nations
- ▶ Peace is a core value – no other organization of this size, diversity, has the ability to work so effectively for peace at the global, national, and local level
- ▶ Members represent:
  - ▶ Every political system in the world
  - ▶ Every religious or non-religious tradition
  - ▶ Almost every vocational choice
  - ▶ Every level of education



# Rotary Peace Park

- ▶ a Rotary Peace Pole with the message:

"MAY PEACE PREVAIL ON EARTH"

written in English, French and First Nations language, including the Rotary International Wheel

- ▶ 2 Park Benches, including tree planting if necessary.
- ▶ A sign to bring awareness to the community of the Rotary Clubs of Guelph and their quest for Peace and Understanding.
- ▶ The Peace Park should be a place where residents can meditate, reflect and relax in nature.





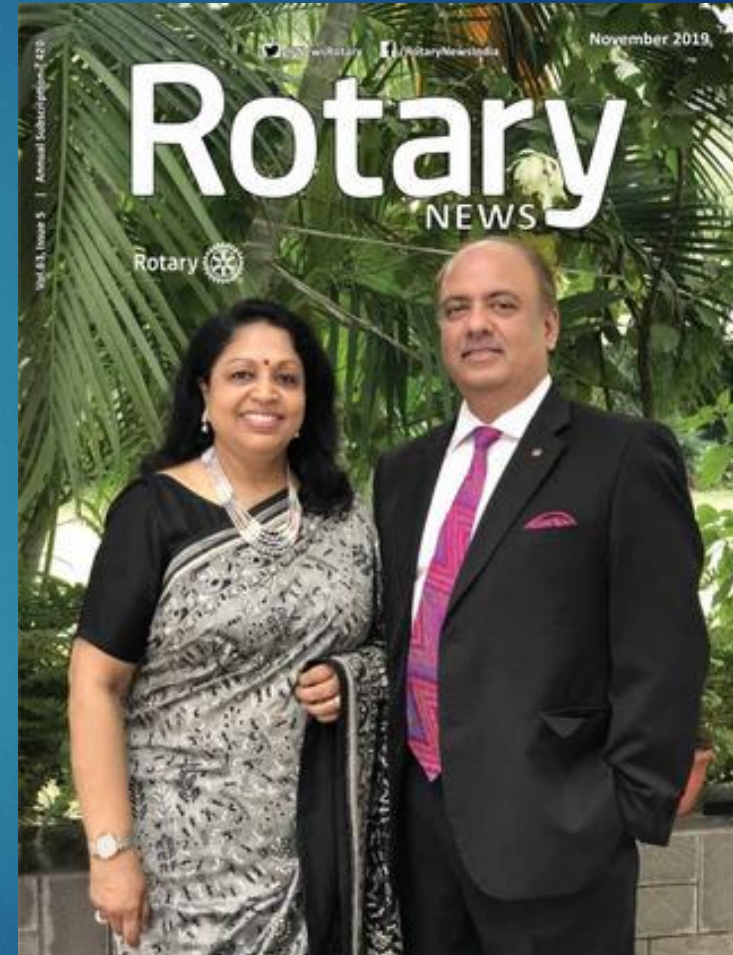
# Capture the Essence of Rotary

- ▶ Continue to raise awareness of what our club does in our community.
- ▶ Build on expanding our communications team.
- ▶ Capturing the essence through photographs and video that we can share through social media.





RI President Shekhar Mehta, in his message for membership growth, has asked “Each One, Bring One.” The idea is that each Rotarian should invite at least one guest to a Rotary meeting.



# Our club leadership team

- ▶ **Donna Graham: Past President**

- ▶ Bylaws
- ▶ Chair - Succession Team
- ▶ Chair- Outreach Committee



- ▶ **Anne Day: President Elect and  
Kristel Manes: President Elect Nominee**

- ▶ Committees and Pods
- ▶ Liaison with Fundraising
- ▶ Cutten Fields





# Our club's backbone

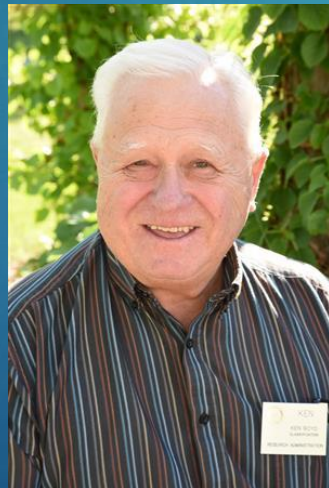
## ▶ **Jim Weir: Treasurer**

- ▶ Budget/ Financial Statements
- ▶ Keeps Board in line
- ▶ Keeps Board out of Trouble
- ▶ 50/50 Draw



## ▶ **Ken Boyd: Secretary**

- ▶ Bulletin
- ▶ Website
- ▶ Keeps Board in Check
- ▶ Rules Master



## ▶ **Darlene Carpenter: Privacy Officer**

- ▶ Police Background checks
- ▶ Updating our Release forms
- ▶ Smart Serve Registration



## ▶ **Carrie Rutter: Special Advisor**

- ▶ Advisor to the President and the Board
- ▶ Sounding board





## **Communications: Jennifer Hildebrandt**

Internal: Ken Boyd & Mary Visser Kerr

External: Jennifer Hildebrandt



## **Membership: Suzanna Geerlinks**

Recruitment: Greg Jones & Clarence Haverson

Retention/Mentorship: Donna Buchan

Care: Laurie Lantaigne & Maureen Smith



## **Allocations: Mary Visser Kerr**

Community: Jannette TenHag & Shawn Nielsen

International: Dave Ryder & Shawn Nielsen



## **Outreach: Donna Graham**

CAT/PODS: Brenda Whiteside

Bingo: Seelan Moodley

Environment: Jack Tacoma





## Youth: Jannette TenHag

Awards: Jannette TenHag

Programs: Jannette TenHag



## Rotary Foundation: Donna Buchan

Awards: Norm Litchfield

Foundation: Patsy Marshall  
& Jacqueline Murray

The  
**Rotary**  
Foundation





# Club Charitable Foundation: Anne Day & Kristel Manes

Ribfest: Dan O'Donnell & Sonia Spekkens

Tour de Guelph: Clarence Haverson

Scotch Nosing: Cam Skipper

Other Events: Cam Skipper





**SERVE TO  
CHANGE LIVES**

There's no limit to what we can do!!