



FINDING A HOME FOR OUR HOSPICE



NORTH BAY AND AREA
COMMUNITY HOSPICE

Committed to Quality of Life, Comfort and Dignity

EVANS BERTRAND HILL WHEELER

ARCHITECTURE INC.

Lines of influence



Hospice of the future should provide:

- Safety
- Security
- Privacy
- Home like environment
- Savvy technology
- Connectivity - Truly and virtually
- Ease of Community Connection
- Operationally Efficient

STAFF - SUPPORT SPACES
 STAFF - OFFICES
 FAMILY - ENCLOSED
 FAMILY - OPEN
 FAMILY - BEDROOMS
 FAMILY - WASHROOMS



Scale: 1:250
Date: June, 2015

—ARCHITECTURE INC.

528 Cassells Street, North Bay, Ontario, P1B 3Z7
T 705 472 0980 F 705 472 2486 W ebhwarchitecture.ca



Hospice, Site Plan

Scale: 1:250
Date: June, 2015

EVANS BERTRAND HILL WHEELER

ARCHITECTURE INC.

528 Cassells Street, North Bay, Ontario, P1B 3Z7
T 705 472 0980 F 705 472 2486 W ebhwarchitecture.ca

LEGEND

- STAFF - SUPPORT SPACES
- STAFF - OFFICES
- FAMILY - ENCLOSED
- FAMILY - OPEN
- FAMILY - BEDROOMS
- FAMILY - WASHROOMS



Hospice, Proposed Plan

Scale: 1:250
Date: June, 2015

EVANS BERTRAND HILL WHEELER

ARCHITECTURE INC.

528 Cassells Street, North Bay, Ontario, P1B 3Z7
T 705 472 0980 F 705 472 2486 W ebharchitecture.ca



EVANS BERTRAND HILL WHEELER

ARCHITECTURE INC.

Lines of influence



EVANS BERTRAND HILL WHEELER

ARCHITECTURE INC.

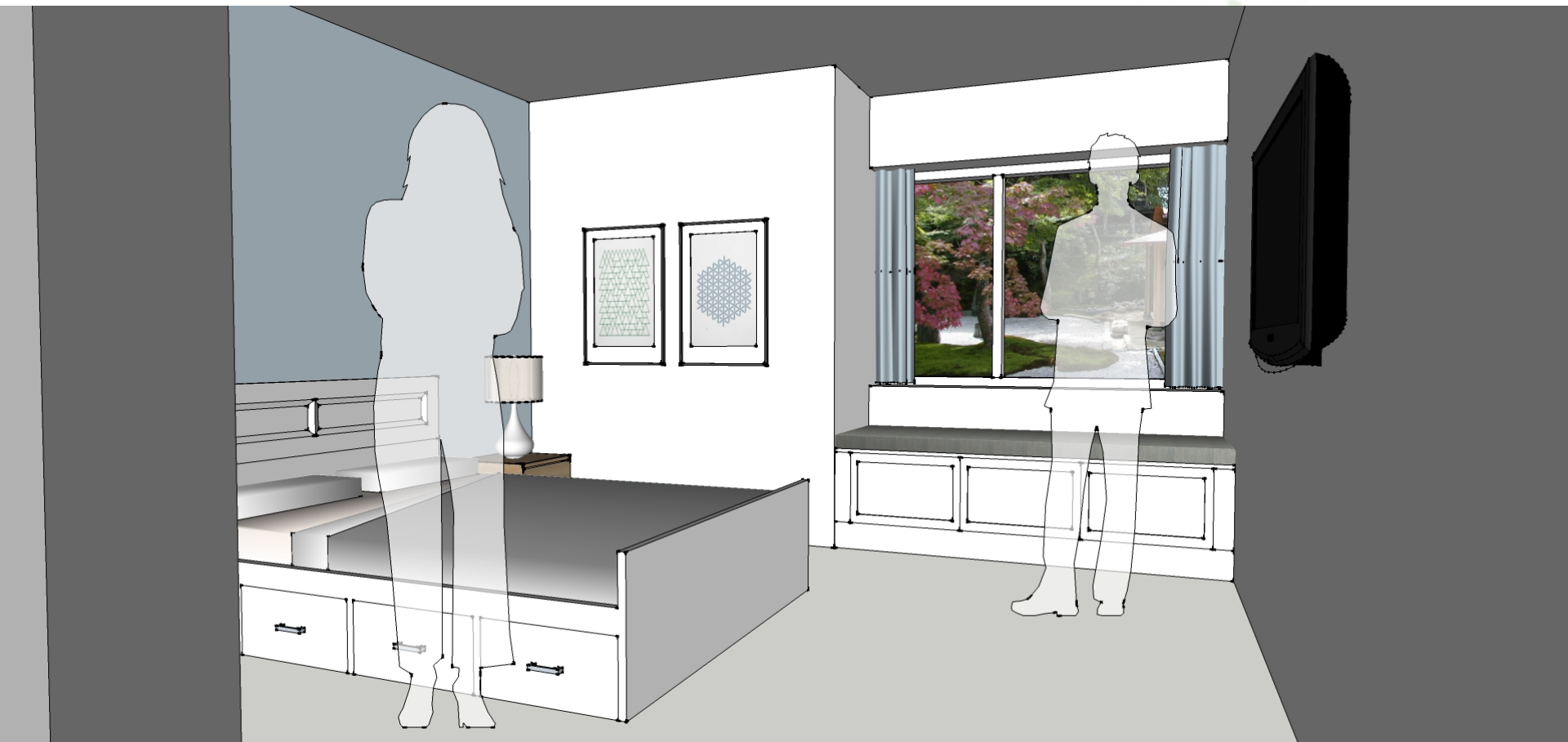
Lines of influence



EVANS BERTRAND HILL WHEELER

ARCHITECTURE INC.

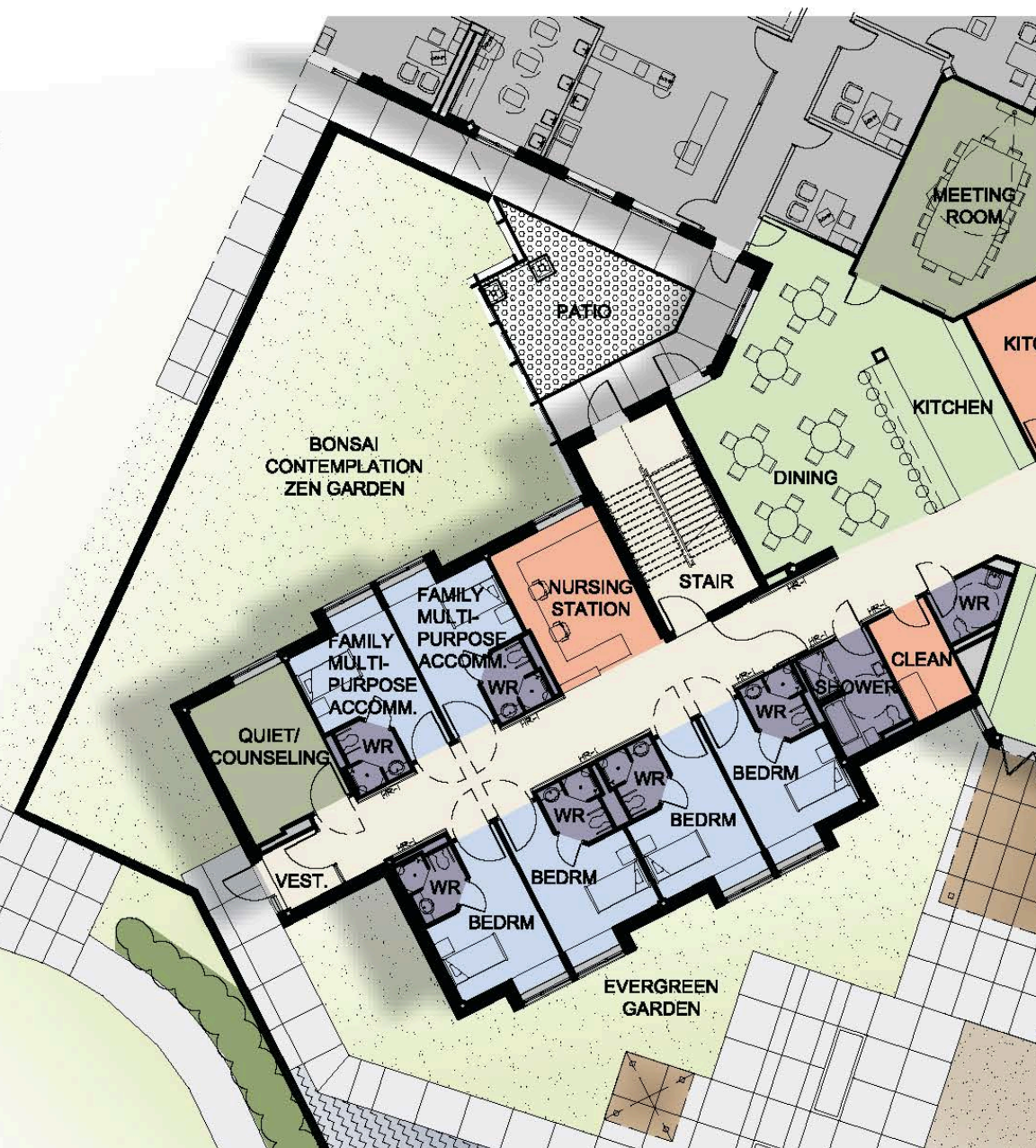
Lines of influence



EVANS BERTRAND HILL WHEELER

ARCHITECTURE INC.

Lines of influence



Hospice West

EVANS BERTRAND HILL WHEELER

ARCHITECTURE INC.

Lines of influence



EVANS BERTRAND HILL WHEELER

ARCHITECTURE INC.

Lines of influence



EVANS BERTRAND HILL WHEELER

ARCHITECTURE INC.

Lines of influence



EVANS BERTRAND HILL WHEELER

ARCHITECTURE INC.

Lines of influence



Hospice Central

EVANS BERTRAND HILL WHEELER

ARCHITECTURE INC.

Lines of influence



EVANS BERTRAND HILL WHEELER

ARCHITECTURE INC.

Lines of influence

LEGEND

- STAFF - SUPPORT SPACES
- STAFF - OFFICES
- FAMILY - ENCLOSED
- FAMILY - OPEN
- FAMILY - BEDROOMS
- FAMILY - WASHROOMS



Hospice, Proposed Plan

Scale: 1:250
Date: June, 2015

EVANS BERTRAND HILL WHEELER

ARCHITECTURE INC.

528 Cassells Street, North Bay, Ontario, P1B 3Z7
T 705 472 0980 F 705 472 2486 W ebharchitecture.ca



© ED ENG Photo

EVANS BERTRAND HILL WHEELER

ARCHITECTURE INC.

Lines of influence