



Rotary

"Service Above Self"



Inspiring Environmental Stewardship



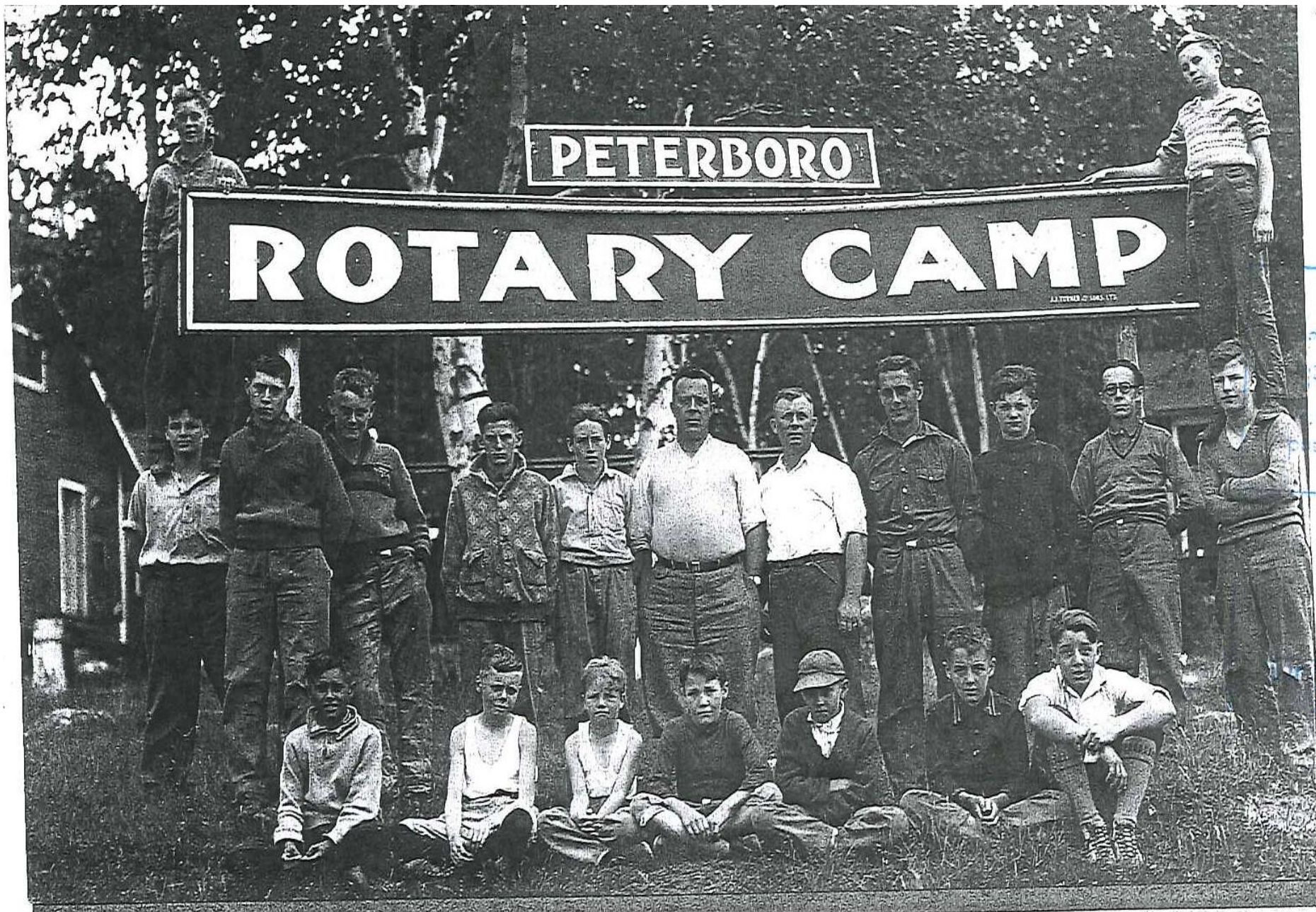
A BIG THANK YOU FOR YOUR GENEROUS SUPPORT!



PETERBORO

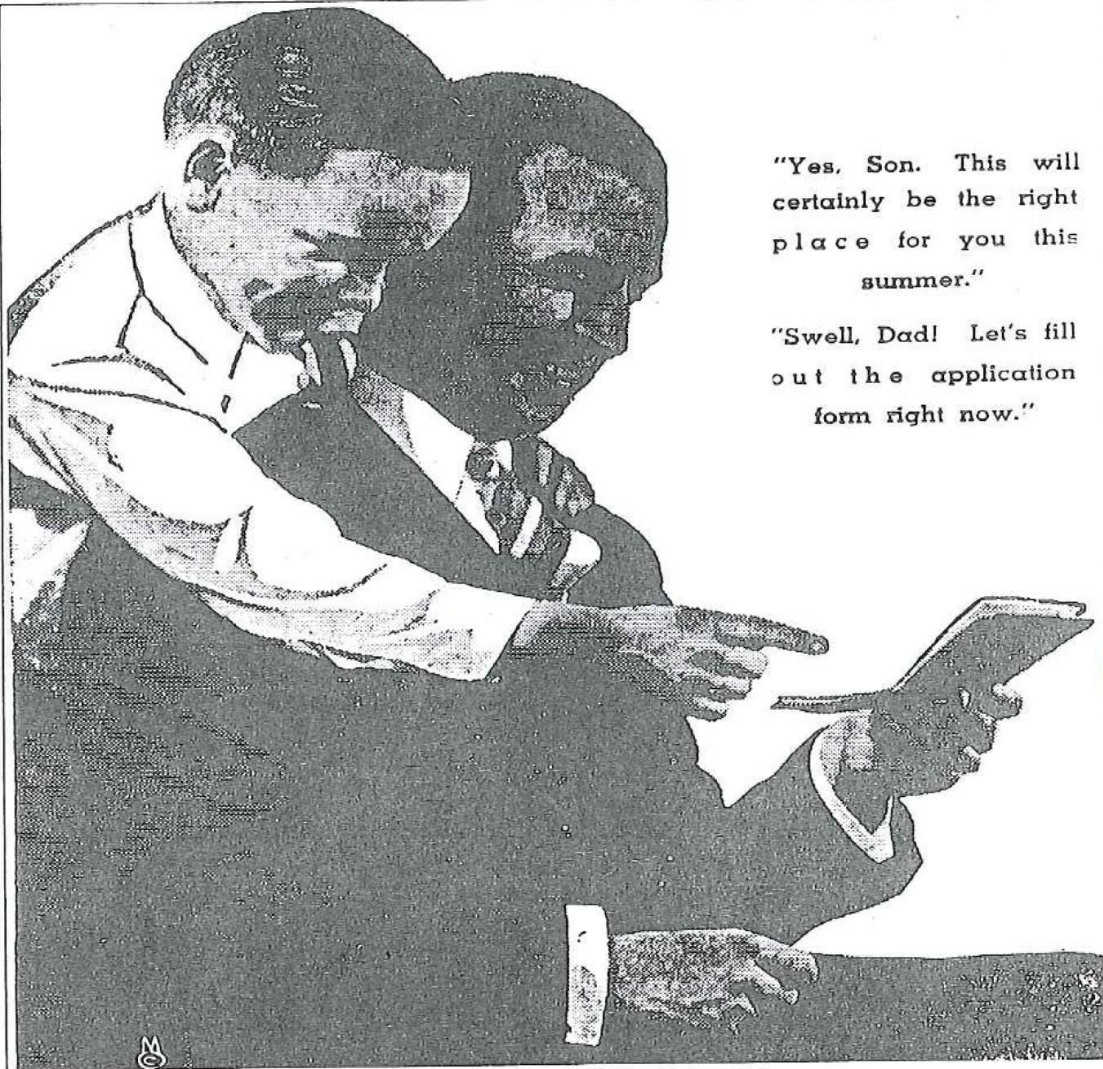
ROTARY CAMP

LITTON © 1965-17





1950's



"Yes, Son. This will certainly be the right place for you this summer."

"Swell, Dad! Let's fill out the application form right now."

CAMP KAWARTHA

For 27 Years Users of Peterborough Watercraft.

The Peterborough Canoe Company Limited
PETERBOROUGH, ONTARIO.



The original dining hall







Rotary Hall – Straw bale



BEL ROTARY CABIN





Rotary has contributed over \$50,000 in subsidies/sponsorship for campers

Camp Kawartha Mission...

A photograph of a group of people silhouetted against a sunset sky over a body of water. The people are standing on a dark wooden dock. On the right side of the dock, a person is sitting on a lifeguard stand. The water is calm, reflecting the sky. The sky is a mix of orange, pink, and blue. The overall mood is peaceful and serene.

"Camp Kawartha inspires environmental leaders and stewards of all ages through dynamic, accessible, year-round outdoor programming and powerful partnerships."

What we do...



- **Residential summer camps** with a focus on nature & the environment
- **Outreach summer camps** in partnership with Cottager's Associations.













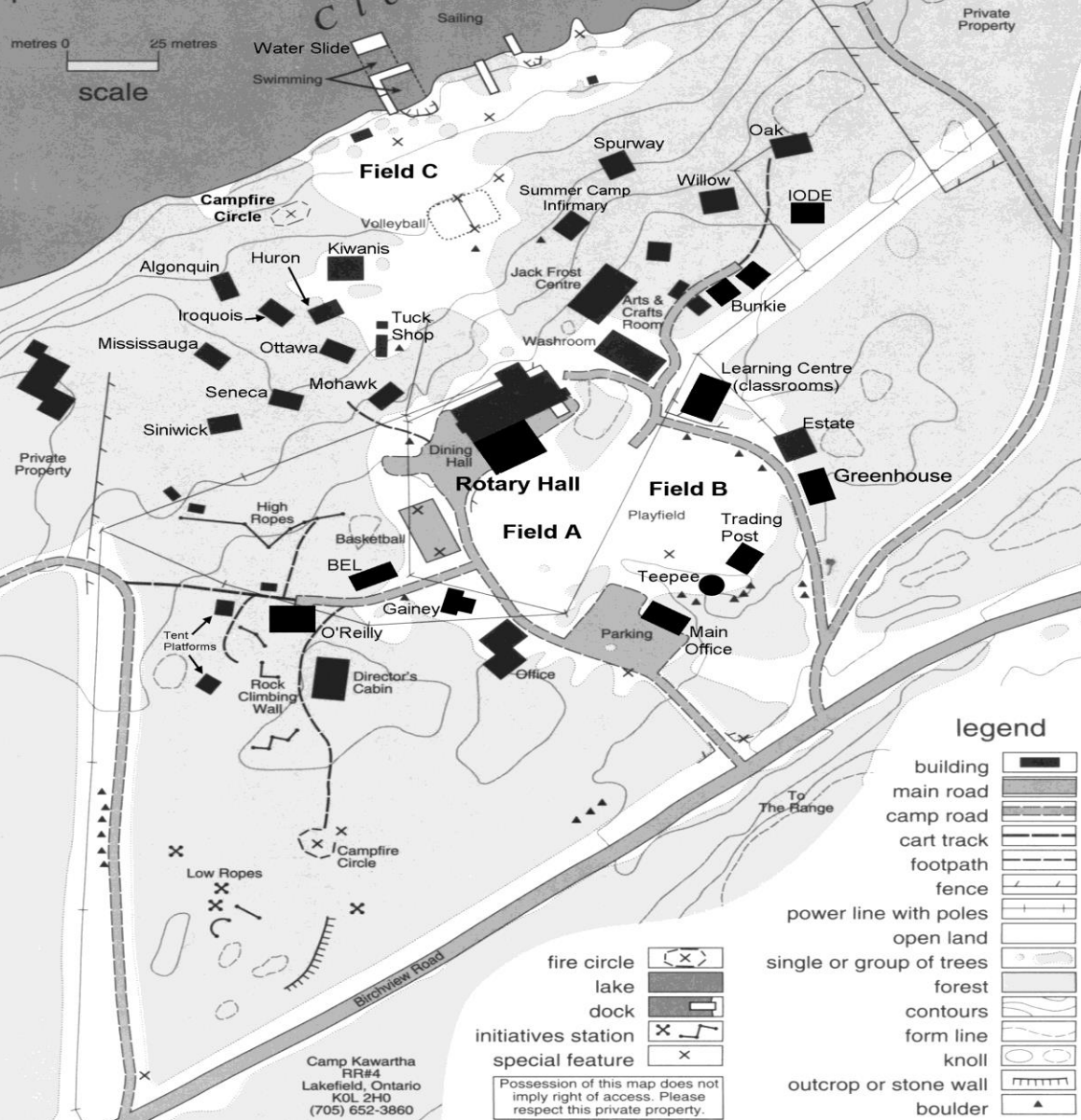


Camp Kawartha

Main Camp

scale 1:1675
contours 2.5 metres
produced 1994

metres 0 25 metres
scale



Main Site Map

legend

- building
- main road
- camp road
- cart track
- footpath
- fence
- power line with poles
- open land
- single or group of trees
- forest
- contours
- form line
- knoll
- outcrop or stone wall
- boulder

- fire circle
- lake
- dock
- initiatives station
- special feature

Camp Kawartha
RR#4
Lakefield, Ontario
K0L 2H0
(705) 652-3860

Possession of this map does not
imply right of access. Please
respect this private property.




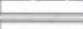


Camp Kawartha

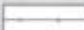







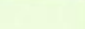
Property Map

Scale 1:5260
Contours 2.5 metres
Produced 1995

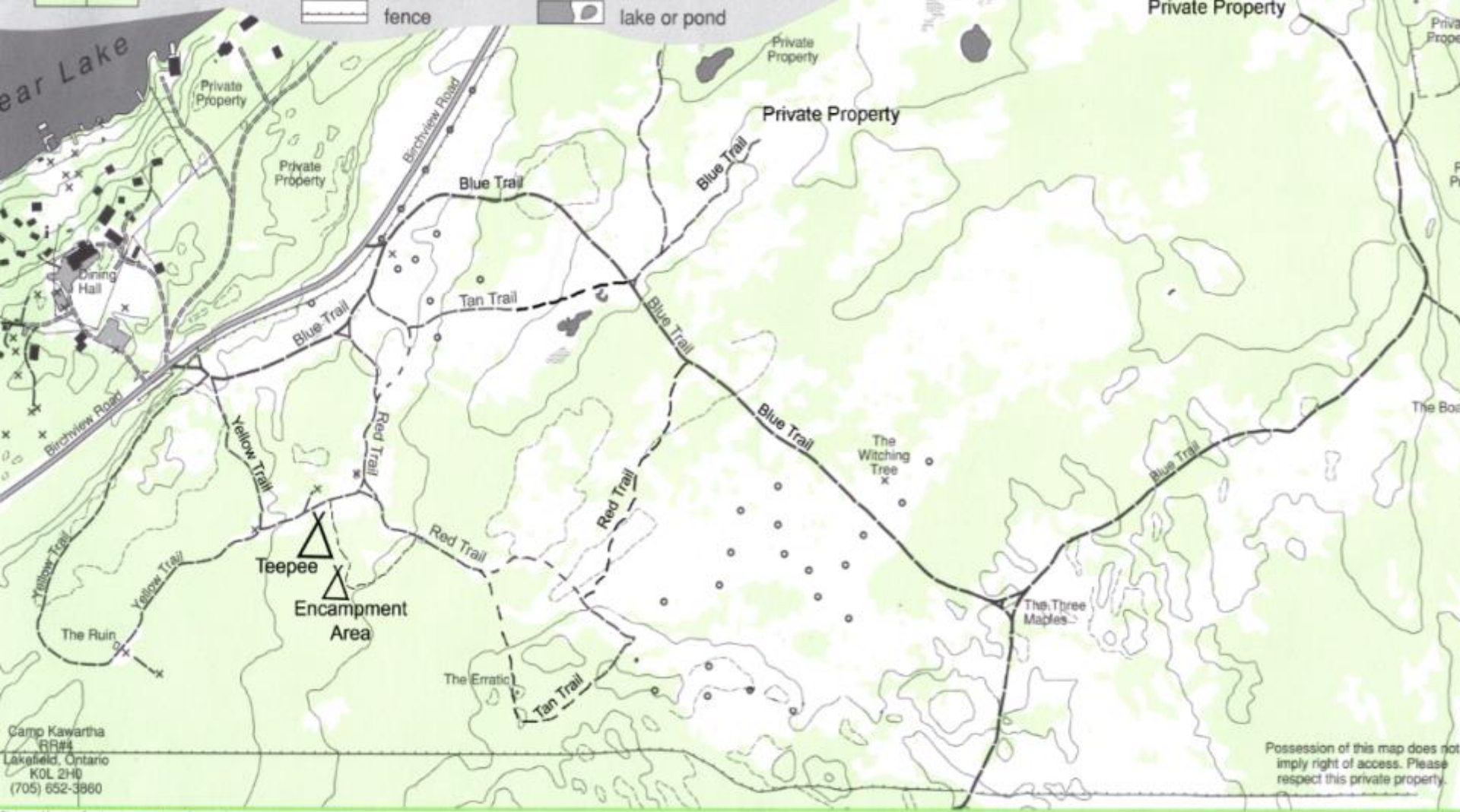
0 50 100 metres

legend

-  building, ruin
-  main road
-  driveway
-  wide trail
-  narrow trail
-  fence

-  power line with poles
-  open land
-  single or group of trees
-  forest
-  contours
-  form line
-  knoll
-  boulder
-  lake or pond

-  stream
-  wetland (seasonal)
-  dock or bridge
-  bird box
-  special feature



Camp Kawartha
RR#4
Lakeland, Ontario
K0L 2H0
(705) 652-3860

Possession of this map does not
imply right of access. Please
respect this private property.

Year Round Programming

- **Outdoor Education Programs** for school groups. More than **60 curriculum** linked programs on offer. Qualified teachers on staff
- **Facility Rentals.** Green weddings, conferences, retreats



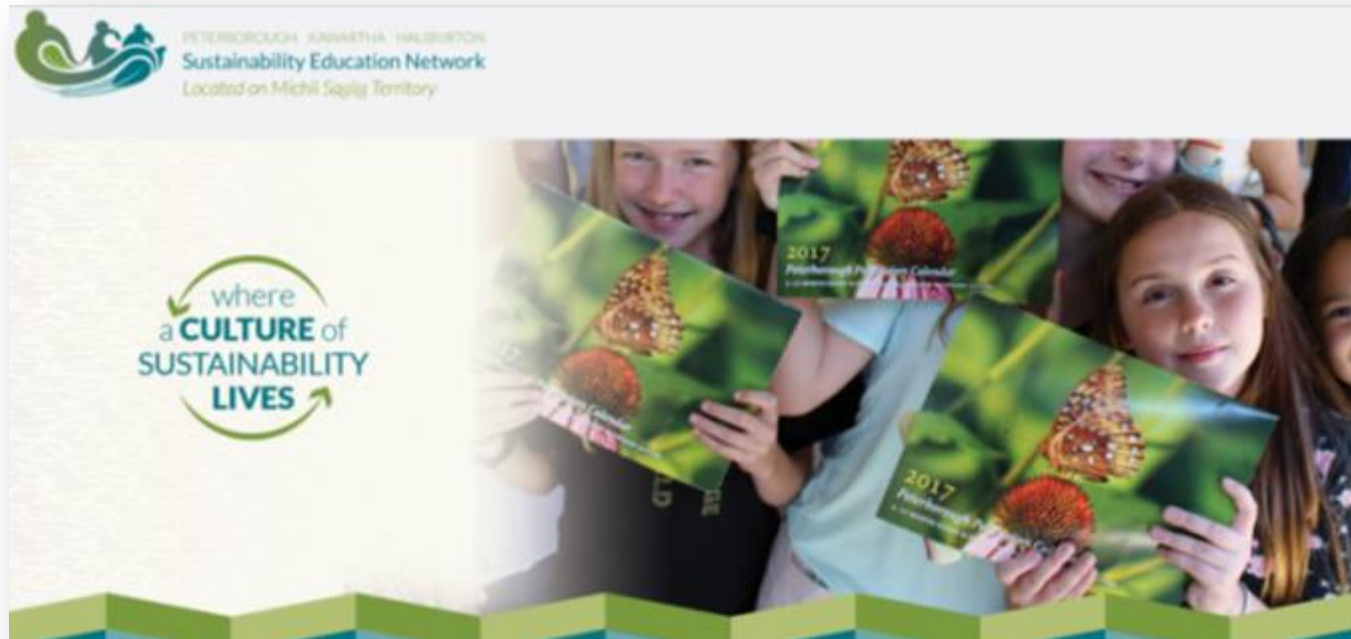
Environment Centre at Trent University

- One of Canada's most sustainable buildings. Offer **30 environmental programs** to elementary and secondary students. We train teachers, student teachers and early childhood educators. We provide workshops on sustainability and lots more!



Camp Kawartha...

- Winner of **20 awards**
- Over **16,000 students, campers, visitors** are impacted by Camp Kawartha per year
- Helped to establish Peterborough/Kawartha/Haliburton as a **UNESCO Centre of Expertise in Sustainability Education**



Camp Kawartha

A National Centre to
inspire environmental
stewards of tomorrow.





This building is healthy.

- 100% non-toxic materials
- Abundant natural light
- State-of-the-art ventilation
- Expanded treatment room & recovery bed areas

This building reverses climate change.

- 20 tons of net carbon storage
- Zero operational emissions

This building creates community.

- Large gathering porch
- Friendly waiting area
- Hub for out-trip packs
- Improved nurse's quarters



CAMP KAWARTHA SUSTAINABLE HEALTH CENTRE



1600 square feet / highly energy efficient / locally-sourced materials
Fully accessible design / natural ventilation / water-efficient

HEALTH CENTRE – A ZERO BUILDING IN ACTION

About the Health Centre:

- Looking after the health needs of campers, staff and students
 - Will include nurses quarters, an examination room, two overnight care rooms, storage
- Providing comfortable quarters for our health care staff
- Be an exemplar of sustainable building in action as an example of a “heathy health centre”
 - Biogenic – stores carbon
 - Nature light
 - Local material sourcing
 - Biophylic – integrating nature into its design – examples may include a living roof and living wall. Increasing biodiversity in and around the site
 - Passive solar perhaps active solar
 - Will strive for Zero Carbon certification and will be entered into the forth coming Carbon Storing Building Challenge
- Cost approximately \$325,000 for a 1,200 square foot building
- With Rotary’s help of \$100,000, Camp Kawartha has raised \$225,000 in pledged and confirmed funds. We are working to close the funding gap.
- Time Line. Construction beginning in the fall of 2020 to be completed for the Centennial in June 2021.



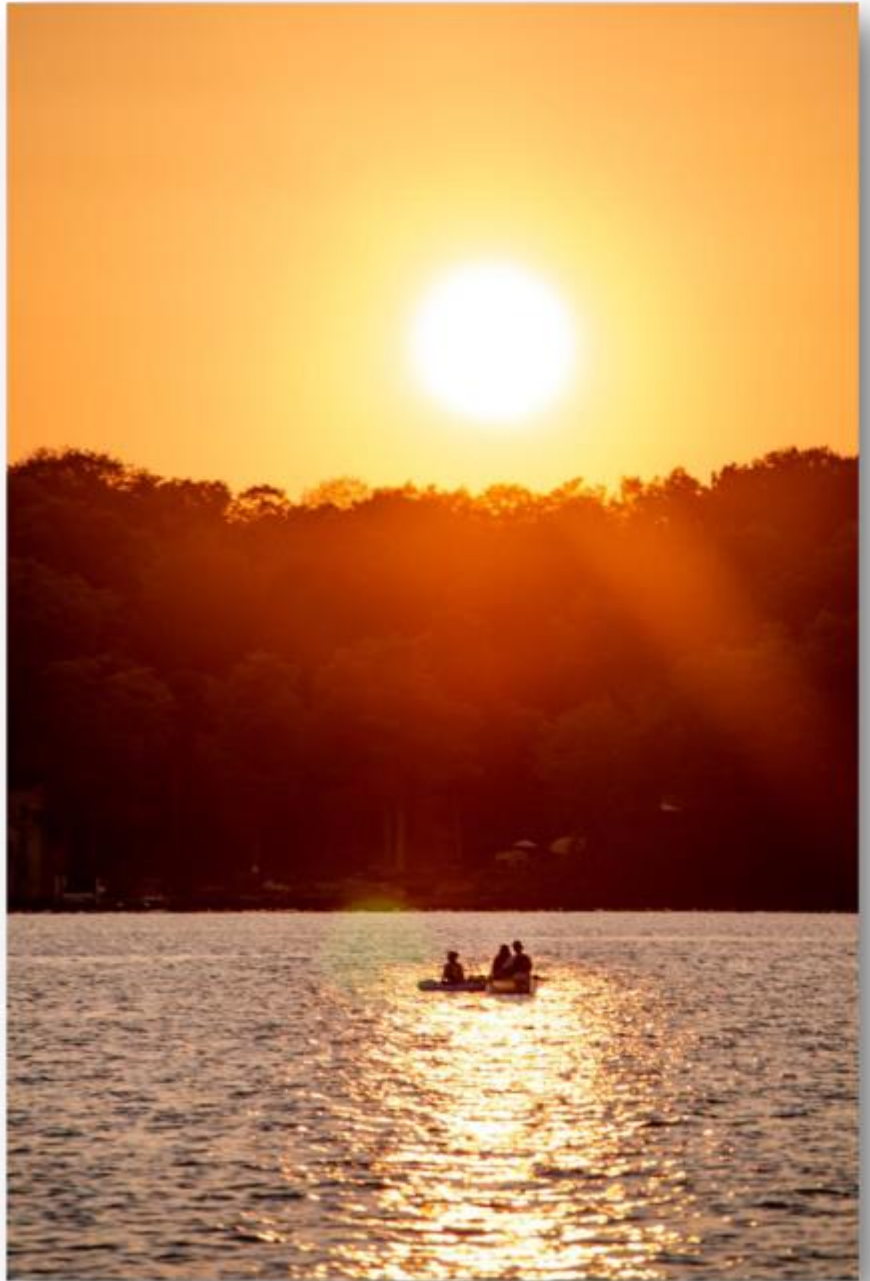
- Rotary Involvement:
 - We welcome Rotary involvement in the design and we hope Rotarians can help with finishes
 - We want to work with Rotary in a naming opportunity perhaps by calling this the Rotary Health Centre
 - We want to ensure there is educational signage acknowledging Rotary's contribution and explaining the sustainable features of the zero carbon Health Centre

We'd like to explore Rotary/Camp Kawartha Partnership opportunities...

- Perhaps we can create: **A Rotary International Centre of Excellence for Environmental Stewardship and Sustainability?**



**Thank you
once again for
your
generosity!**



A photograph of a woman and three children sitting on a grassy field. The woman, on the left, has dark curly hair and is wearing a black shirt. She is pointing her right hand towards a sign in the background. The sign is white with black text that reads "bookings info@antipodians.com" and "www.antipodians.com". In the background, there are several large, dark, feathered birds, possibly ostriches or emus, standing on a wooden platform. The children are sitting in front of her. The child on the far left is wearing a red and white crocheted hat with a white face and a rainbow band. The child in the middle is wearing a blue and yellow crocheted hat with brown pom-poms. The child on the right is wearing a red baseball cap and a grey t-shirt. They are all looking towards the sign. The word "Questions?" is written in white text in the upper right corner of the image.

Questions?