

Rotary Green Way Trail Shade Shelters

January 13, 2020

Rotary Green Way Trail

Update

Since August 12, 2019 adoption of the project by Peterborough Rotary Club:

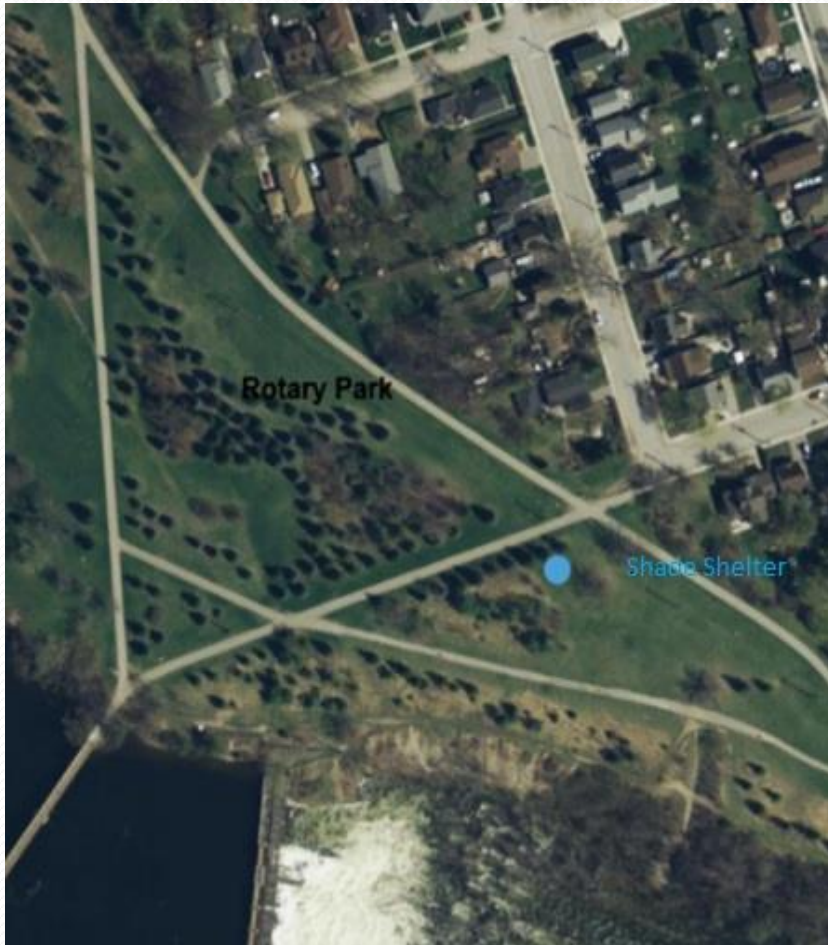
1) Meetings and Site Inspections

- City Staff meeting – several departments – accessibility
 - Endorsed concept – must be AODA compliant
 - asked Rotary to install charging station for mobility devices.
- City staff site inspections
- Site inspection with Peterborough Utilities Services
 - Able to connect to street lamp power supply.
 - Shelter will need panel and meter
- Site Inspection with Aside Architects
 - Provided design concepts

Rotary Green Way Trail Update

- Presentation to Arenas, Parks and Recreation Advisory Committee
 - Endorsed concept
- Holy Cross C.S.S. Construction Class
 - Very interested in participating in project
 - Involved in previous Rotary project
- 2) **RFQ – for Construction and Electrical Drawings**
 - necessary for building permit application
 - 3 quotes
 - presently finalizing contract
- 3) **Ongoing**
 - Searching for Project Foreman
 - Exploring Additional Funding Sources (Trillium Foundation)

Site 1 – Rotary Park



Proposed Design



Site 2 – Whitaker Street



Rotarian Involvement

1) Roll up your sleeves and get dirty

- Form and pouring pad
- Landscaping and pathway
- Installing roof sheeting and steel roof

2) Sponsorships

- Build on Rotarian's contribution in creating Rotary Park
- "Donate a Post or Beam"
- Recognized on a Supporters board at the shelter

Project Supporters To Date

- Bill Morrison and Family
- Aside Architects
- Peterborough Utilities Services
- Holy Cross C. S. S.