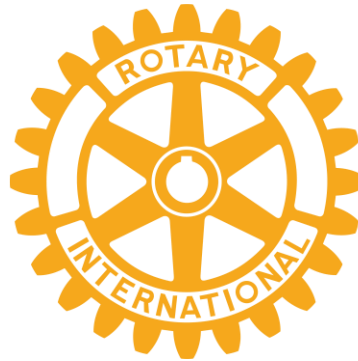


Rotary



Club of
Bellingham

2021-2022 Major Project Award
Benefitting:



COMMUNITY
BOATING CENTER
BELLINGHAM BAY



Rotary Club of Bellingham

The Major Project Committee and the RCOB Board are excited to announce that the **Bellingham Community Boating Center's new building** will be the recipient of our major project fund for 2021-22.

The new building will be named the ***Rotary Wheelhouse*** in recognition of our support of this project. The first level will be comprised of storage and bathrooms which are badly-needed. Showers and a handicapped-accessible bathroom and shower will be included. Second floor will include a large classroom. While the building itself is a worthy project, what makes this something RCOB can enthusiastically support is the CBC's impact on our community. The Boating Center amenities are available to anyone without any membership fee. It has programs for children as young as 5 to learn about marine life and water safety, a middle school sailing team, and there are a number of programs for people of a variety of ages and abilities. They make it a point to reach out to communities that might rarely or never have the experience of being on the water, such as participants at the Max Higbee Center (the recipient of our Major Project award last year). The Port is also constructing a handicap-accessible launching ramp to facilitate this outreach.

Let's make a big splash with a strong donation to this very-Bellingham project!



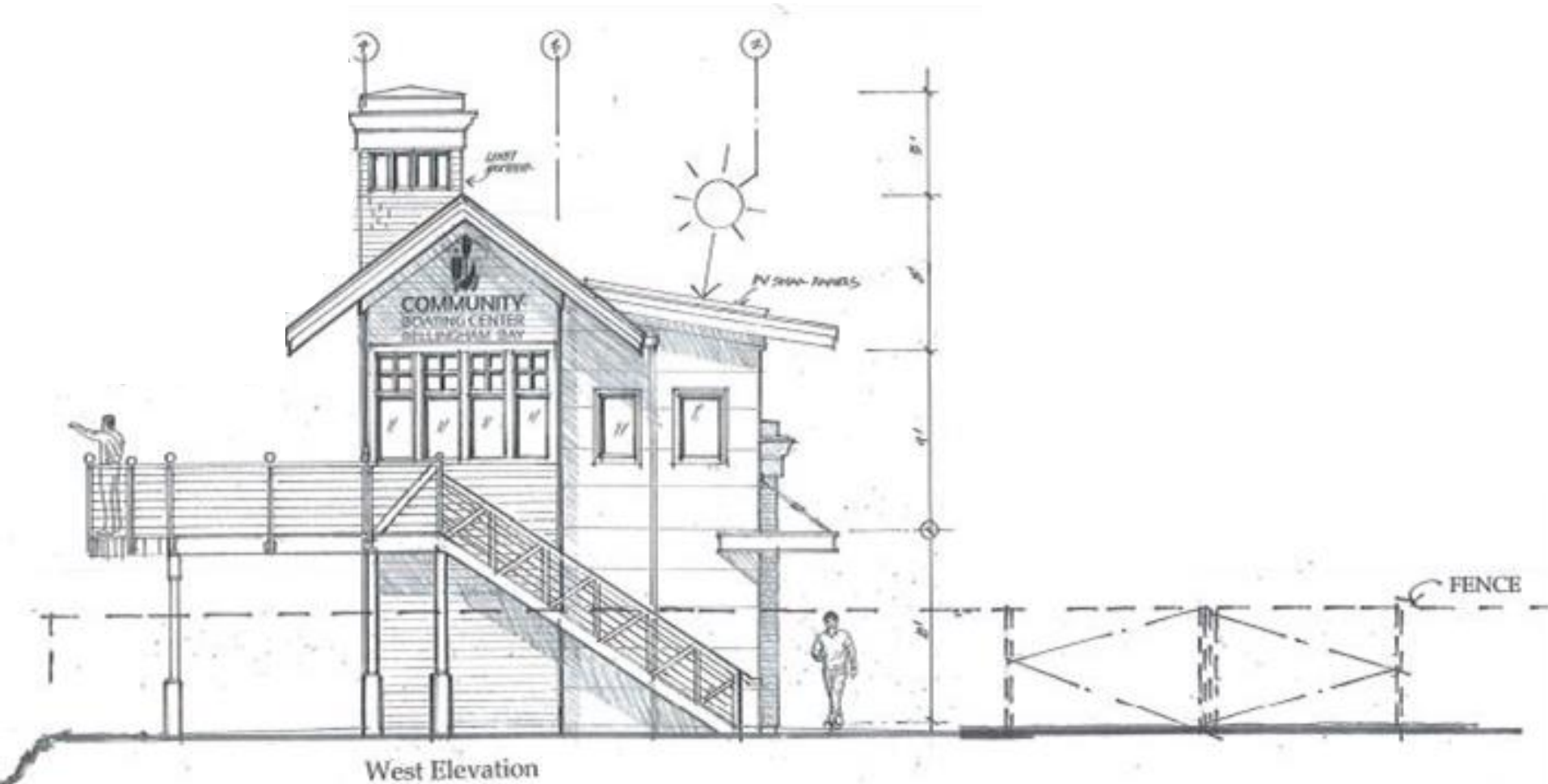
"I love the Community Boating Center! Such a great space to provide access to Bellingham Bay! The CBC is full of friendly staff and volunteers that love to help get people on the water. The Community Boating Center helped me find a community of wonderful paddlers and sailors that made me feel at home. Such a great place and I can't recommend it enough!"

-Anna Smith

CBC Current Campus Overview



New Building: Rotary Wheelhouse



Preliminary Design Concepts for
Bellingham Bay Community Boat Center
Port of Bellingham, WA

SCHEME E



Rotary Wheelhouse &
COMMUNITY
BOATING CENTER
BELLINGHAM BAY



MASTERPLANNING
ARCHITECTURAL CONCEPTS
DESIGN OVERSIGHT

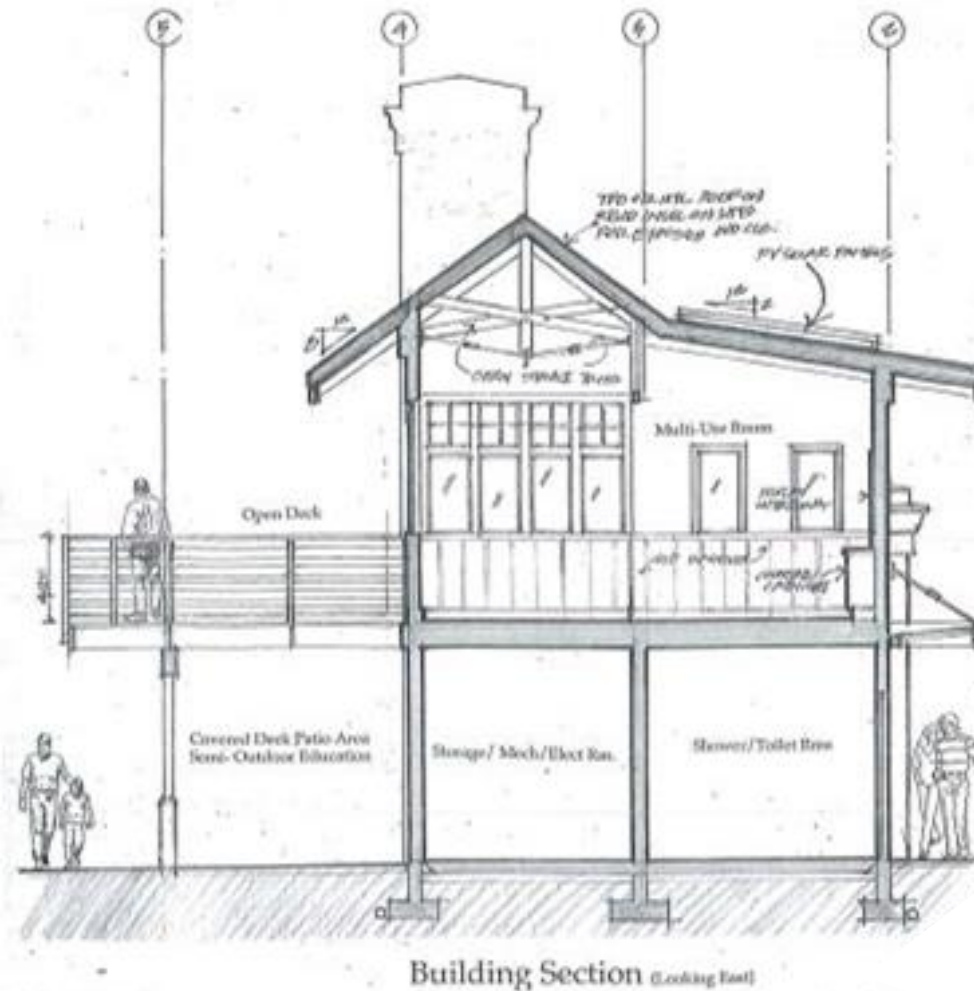
Christensen
DESIGN MANAGEMENT

P.O. BOX 5068 | BELLINGHAM, WA 98227-0068 | 360-676-4000 FAX 360-676-4003
www.masterplanning.com • E-MAIL: cdm@masterplanning.com

REV. 11-11-21
REV. 11-4-21
REV. 9-20-21

CDM

New Building: Rotary Wheelhouse

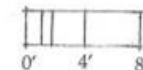


Preliminary Design Concepts for
Bellingham Bay Community Boat Center
Port of Bellingham, WA

SCHEME E



Rotary Wheelhouse &
COMMUNITY
BOATING CENTER
BELLINGHAM BAY



MASTERPLANNING
ARCHITECTURAL CONCEPTS
DESIGN OVERSIGHT

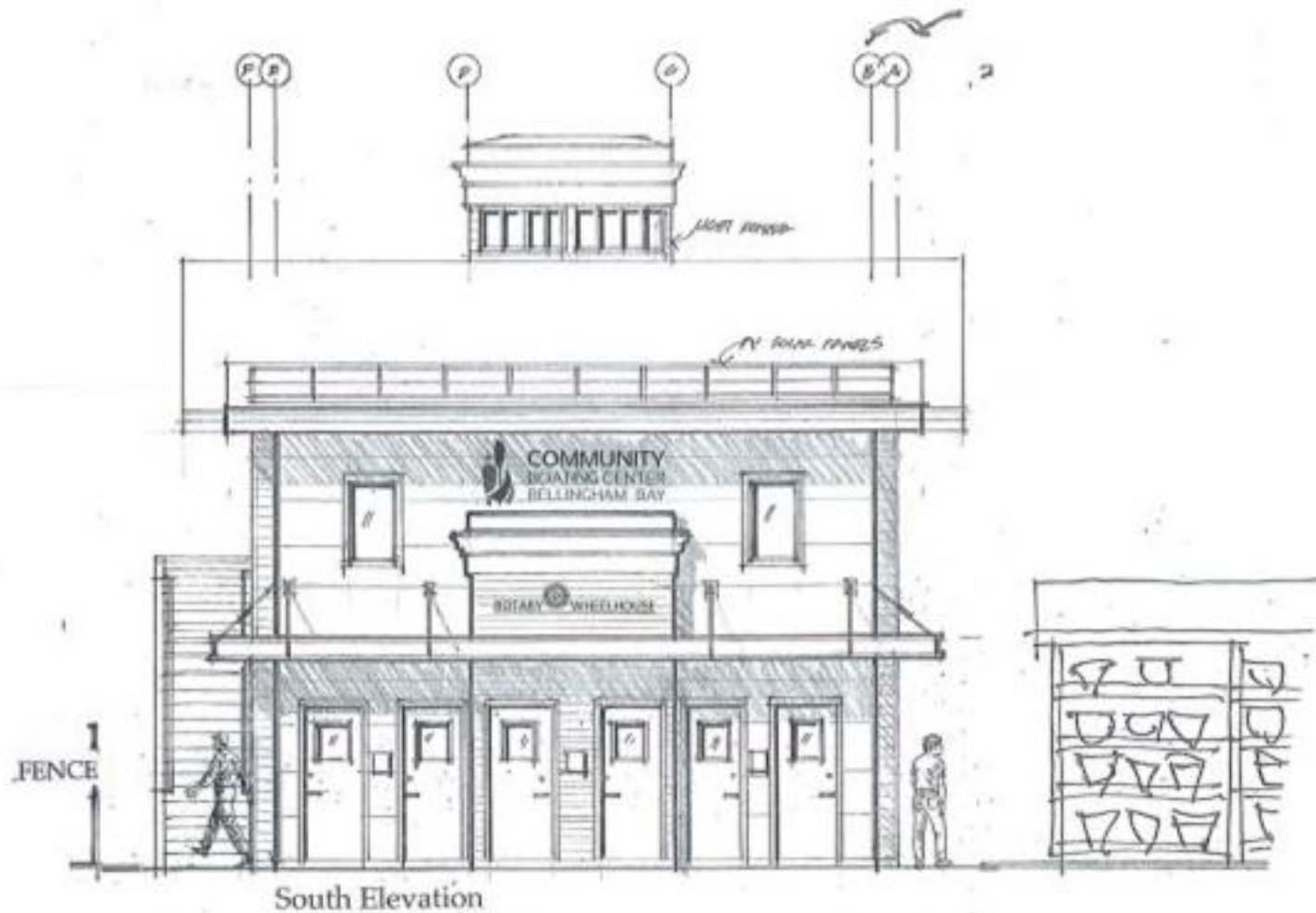
Christensen
DESIGN MANAGEMENT

FIG. 504 504-1 BELLINGHAM, WA 98227-0001 360-676-4000 FAX 360-676-4001
www.masterplanning.com E-MAIL: cdm@masterplanning.com

REV. 11-11-21
REV. 11-4-21
REV. 9-20-21

CDM

New Building: Rotary Wheelhouse

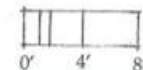


Preliminary Design Concepts for
Bellingham Bay Community Boat Center
Port of Bellingham, WA

SCHEME E



Rotary Wheelhouse &
COMMUNITY
BOATING CENTER
BELLINGHAM BAY



MASTERPLANNING
ARCHITECTURAL CONCEPTS
DESIGN OVERSIGHT

Christensen
DESIGN MANAGEMENT

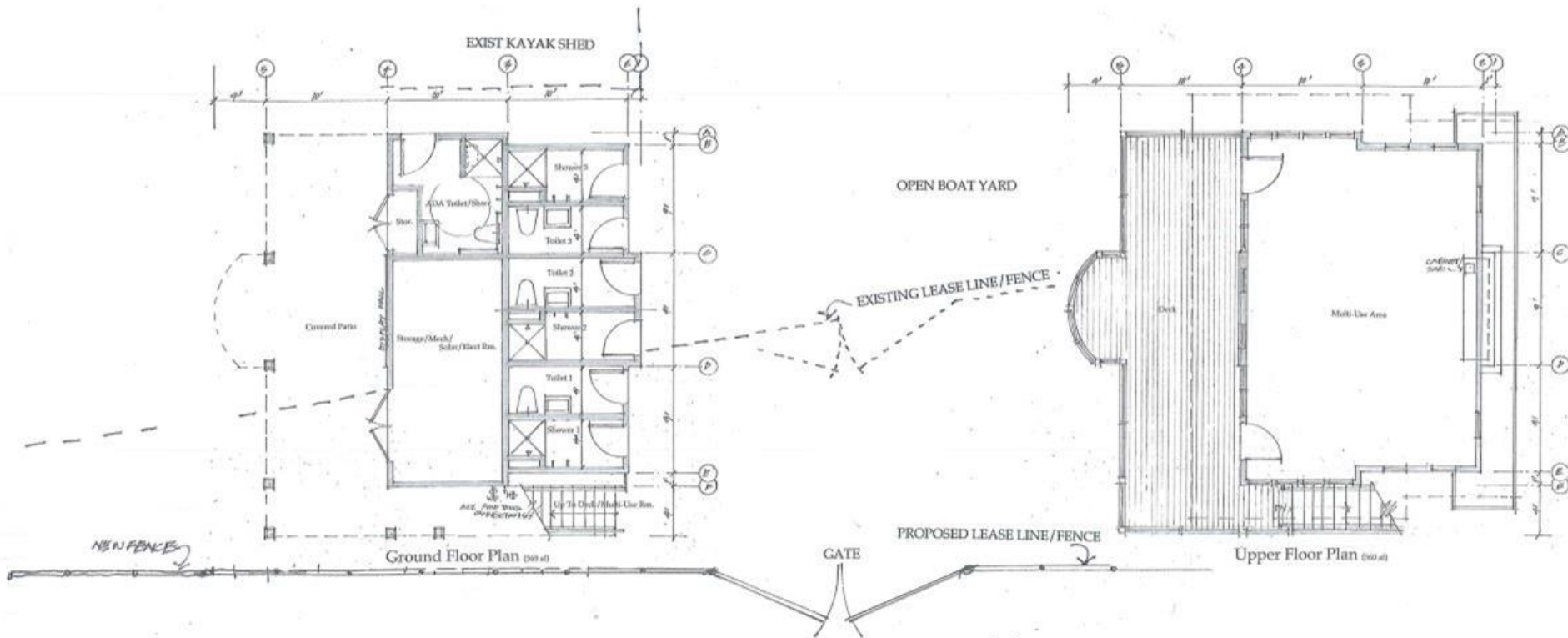
P.O. BOX 5068 BELLINGHAM, WA 98227-0068 TEL 360-676-4000 FAX 360-676-4001
www.masterplanning.com E-MAIL: cdm@masterplanning.com

REV. 11-11-21
REV. 11-4-21

REV. 9-20-21

CDM

Interior



Preliminary Design Concepts for
Bellingham Bay Community Boat Center
Port of Bellingham, WA

SCHEME E



Rotary Wheelhouse &

COMMUNITY
BOATING CENTER
BELLINGHAM BAY

MASTERPLANNING
ARCHITECTURAL CONCEPTS
DESIGN OVERSIGHT

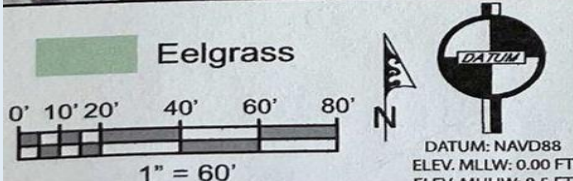
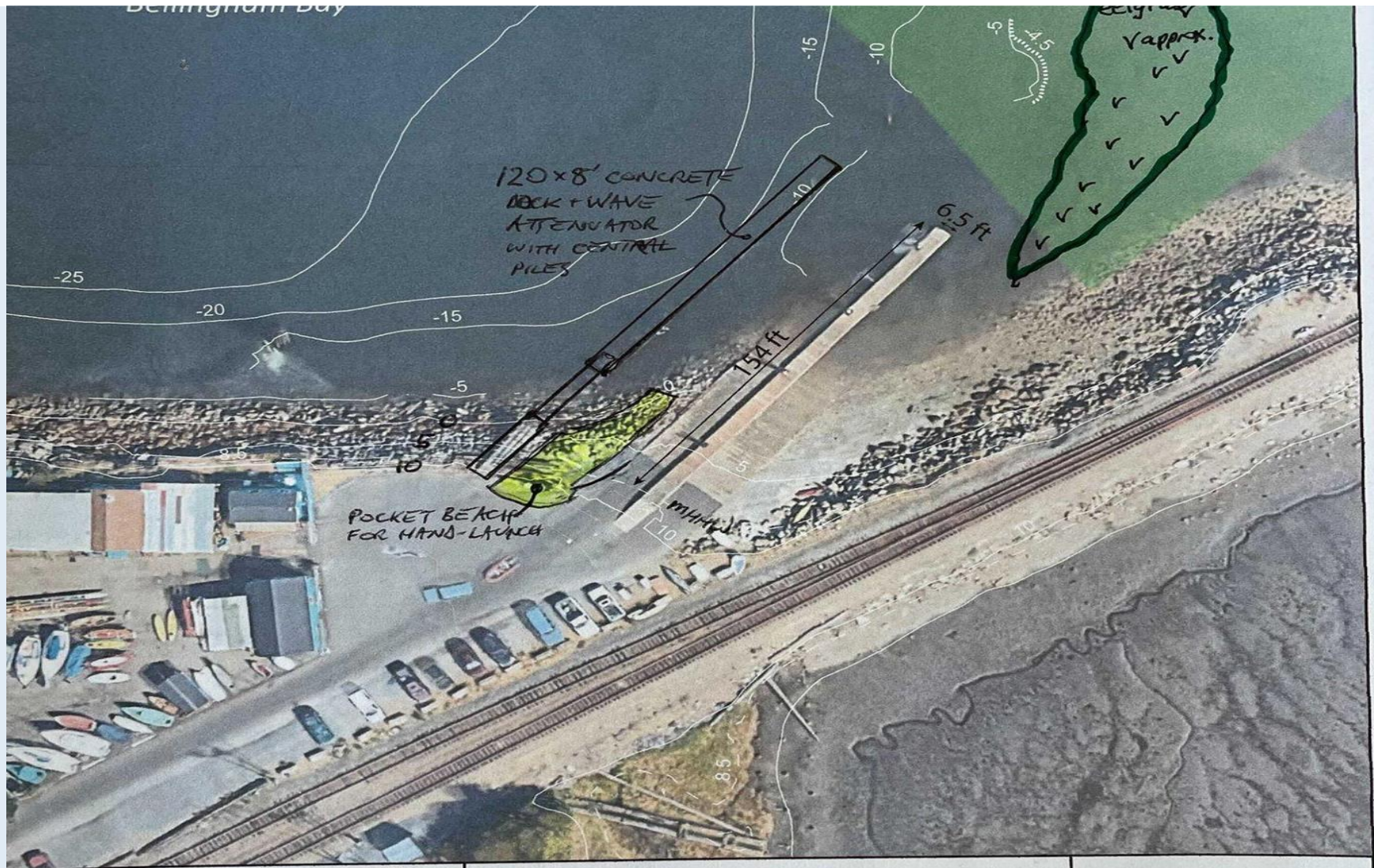
Christensen
DESIGN MANAGEMENT

FIG. 304 50681 BELLINGHAM, WA 98227-0084 360-676-4000 FAX 360-676-4003
www.masterplanning.com E-MAIL: cdm@masterplanning.com

REV. 11-11-21
REV. 11-4-21
REV. 4-20-21

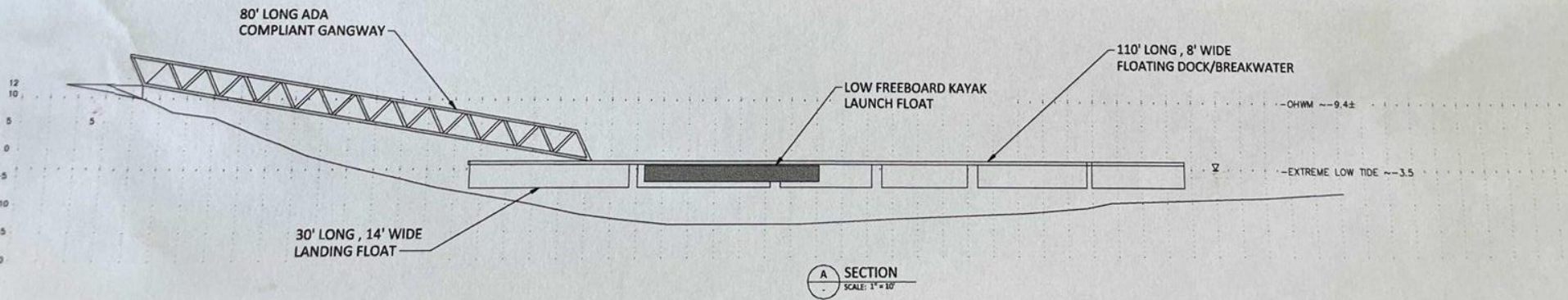
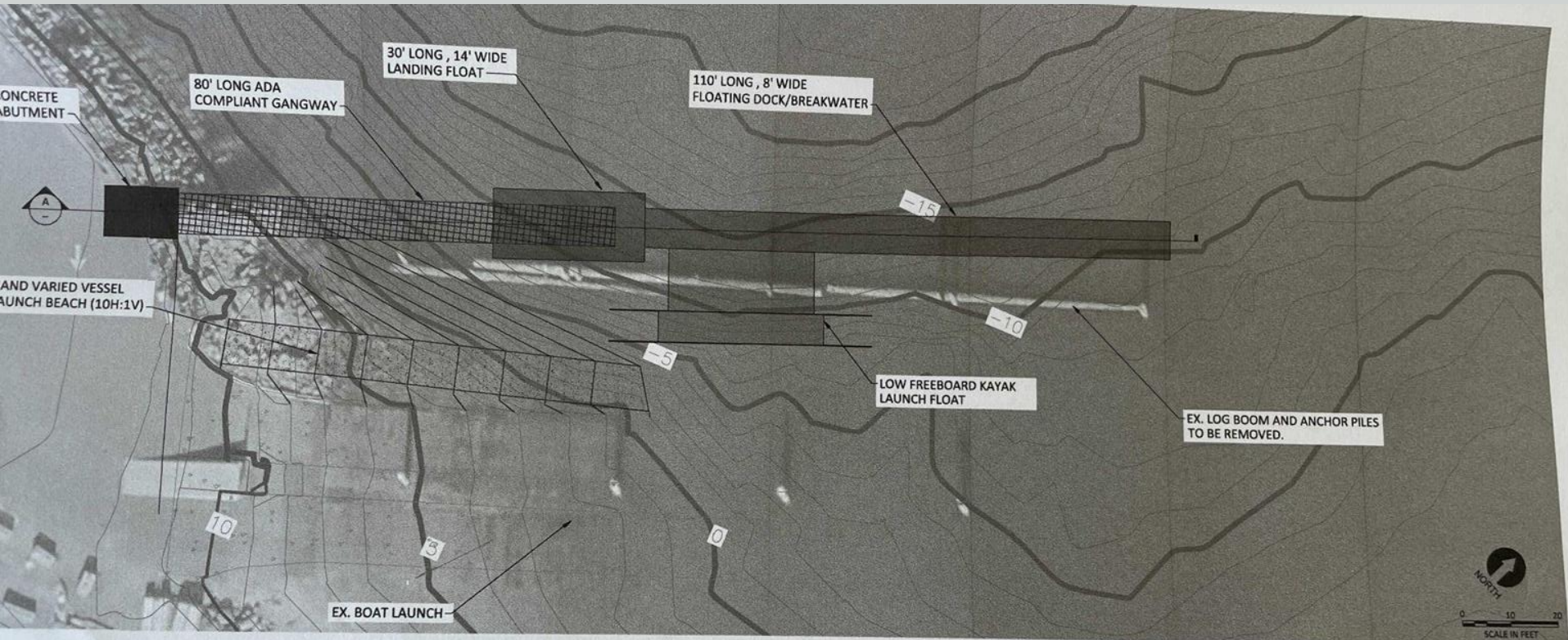
CDM

Port of Bellingham Small Watercraft Dock Project



FAIRHAVEN ~~COMMUNITY~~ BOATING CENTER RAMP
EXISTING CONDITIONS - SITE PLAN
& CONCEPT DESIGN 4/10/20

CGS
COASTAL GEOLOGIC SERVICES
1711 Ellis St, Suite 103
Bellingham, WA 98225
360-647-1845 - coastalgeo.com



DESIGNED BY: GAN	PORT OF BELLINGHAM	PORT OF BELLINGHAM	SCALE	DATUM	CONCEPTUAL	FAIRHAVEN BOAT LAUNCH	SHEET
DRAWN BY: GAN	1801 ROEDER AVENUE	BELLINGHAM, WASHINGTON 98225	Horiz. 1"=40'	Horiz. NAD83 FT	FROM COST ESTIMATE	HAND CARRY VESSEL DOCK	1
CHECKED BY: —			Vert. 1"=40'	Vert. MLLW, FT			
REVISION DESCRIPTION	BY						

WHY CBC?



A community center using boats as the excuse to gather

- Connecting people from different corners of society, and different chapters of life over a **common interest**
- Offering a holistic approach to getting people on the water, providing a **sense of place, inspiring curiosity** and **building community** in addition to the watersport skills and cold water safety
- We actively work to seek representation from the underrepresented to build a rich and diverse space where all are welcomed
- We've developed pathways for all of our constituents to be involved in our work, to go from student to teacher and create lifelong connections to the sea.

From CBC's 2021 Impact Report:

1,342

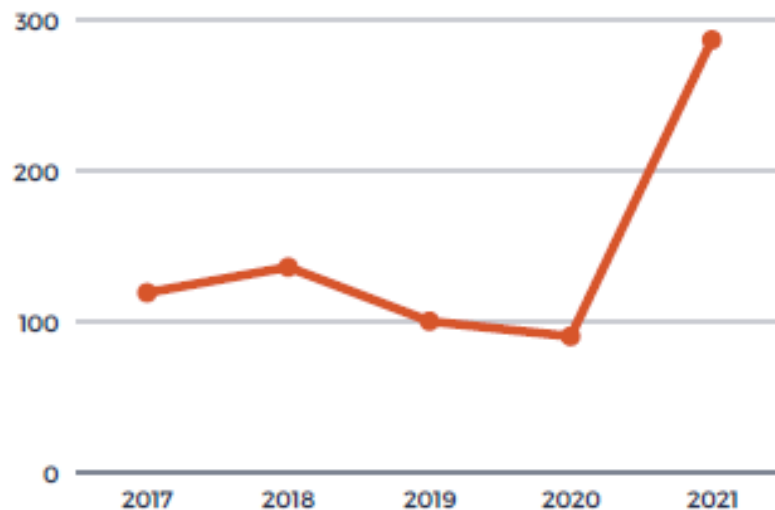
Hour of youth summer
programming on Bellingham
Bay

327

Number of Youth
Campers served.

\$5,200

Scholarships given with generous
contributions by **The Sailing
Foundation**



EXPONENTIAL GROWTH

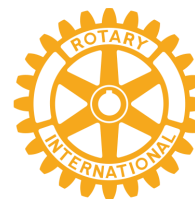
In 2021, the Community Boating Center was able to host an unprecedented number of youth campers through our programming. Our youth programs sold out across the board. We look forward to utilizing this years off season to strategize ways to increase our capacities to serve our community.

Please make your pledge to the
Rotary Club of Bellingham today
to support the
Community Boating Center's expansion!



COMMUNITY
BOATING CENTER
BELLINGHAM BAY

Rotary



Club of
Bellingham

PAY BY CHECK:

Make payable to RCOB Foundation
and send to
2200 Vining Street
Bellingham WA 98229

Note "Community Boating Center" in memo

PAY BY VENMO:

Search RCOB Bellingham

Note "Community Boating Center" in memo

PAY BY CREDIT CARD
OR PAYPAL:

<https://www.paypal.com/donate?token=pL5SuG1HuxRPUYh2j1yMsKRSqRTVuP01ORHEcnw2ygoblCaviXGL20yRsi0ZCyhe5TTXw8lPU0CLUxj>