

iHuman Youth Society
Rotary Club of Edmonton Funding Proposal (updated)
April 24, 2019

Organization

Name and Address

iHuman Youth Society
9635 102A Ave
Edmonton, AB
T5H 0G3

Telephone Number

780-421-8811

CRA Number

873223168RR0001

Website

<http://www.ihuman.org>

Contact Person

A) Christopher Weiss
Community Engagement Manager
christopher@ihuman.org
780-977-6757

B) Catherine Broomfield
Executive Director
catherine@ihuman.org

Overview

iHuman is an inner city agency serving marginalized youth through a unique blend of arts mentorship, crisis intervention and life-skills development. iHuman is a youth-driven entity that develops programs responsive to youth needs and uses the arts as a positive engagement tool. More than 500 youth are served annually at iHuman.

On-site creative spaces at iHuman include a music recording studio, theatre, fashion studio and visual art studio. All youth participate in the creative programming while also engaging services that address parenting skills, addictions, mental health, employment and other factors.

As a follow-up to last year's major flooding event, iHuman requests one-time support to both restore the downstairs facilities and paint new murals in the renovated space. A small portion of these funds would also replace damaged glass in our silk screen printing equipment.

Request: \$30,000

Project	Amount
Building Repairs	\$29,000
Creative Studios (supplies and murals)	\$1,000
Total	\$30,000

Project Description

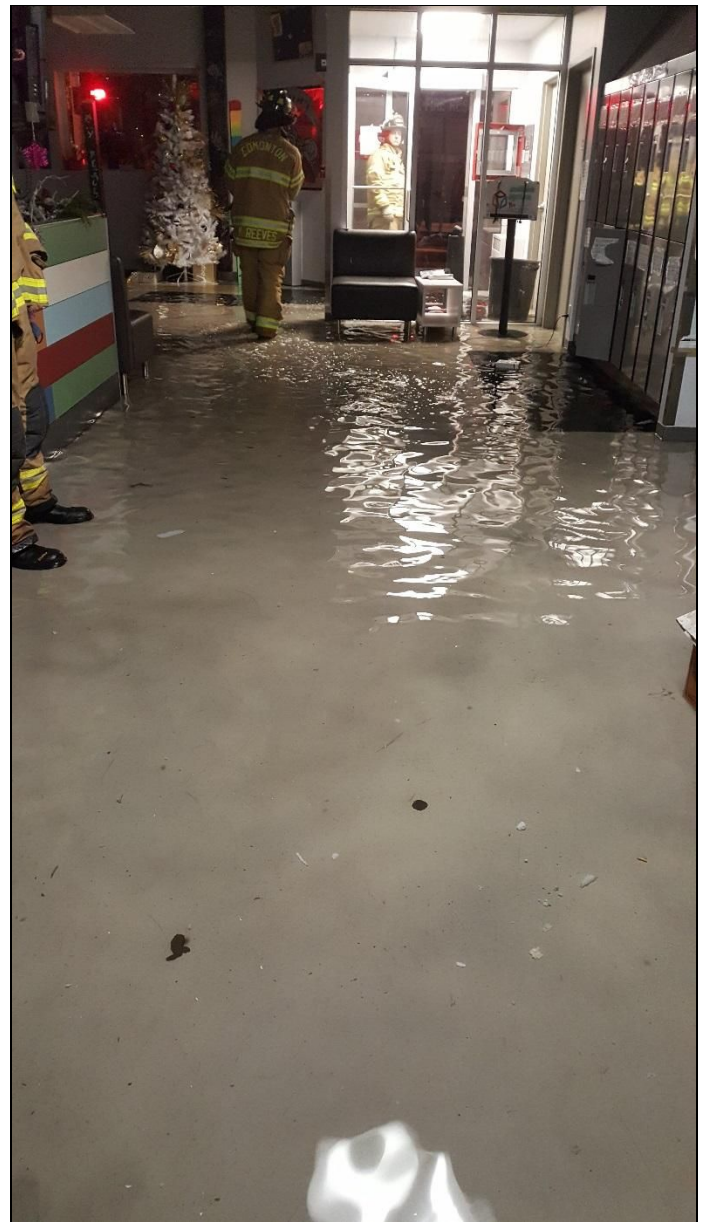
iHuman experienced a major flooding event on January 2, 2018 that has closed our main space for 15 months.

While insurance has covered the bulk of the associated costs, there is additional damage to our flooring and building that cannot be paid for by our policy. This negatively affects both our parenting program for young mothers (Woven Journey) as well as iHuman's Indigenous leadership, education and employment program (iSucceed). There is also repair work needed in our main hallway.

While many of these costs have been covered through a combination of insurance, grants and emergency donations, our agency forecasts that approximately \$39k of these repairs remain unfunded. iHuman Youth Society asks that the Rotary Club of Edmonton cover the bulk of these costs (**\$29k**).

We also request that the Rotary Club contribute to new murals and artwork in the main space of our building. This work will be done through iHuman's creative studios and co-created by the young artists that access our services.

This donation (**\$1k**) will support needed art supplies for the project, as well as glass in damaged equipment.



Population Served

Our agency works with the most marginalized population of youth in Edmonton – with ongoing barriers related to addictions, homelessness, poor mental and physical health, systemic abuse and the damaging effects of lived and intergenerational trauma.

iHuman exists to serve vulnerable and traumatized youth (ages 12-24) in Edmonton’s inner city – including their children. The majority of these youth struggle with homelessness and domestic abuse, and most are not attending school. Approximately 80% of iHuman youth self-identify as Indigenous and live at the intersection of other major risk factors for isolation including: LGBTQ+ identity, poverty, disability and poor mental health.

Project Impact

For over 16 months following the impacts of the flood, iHuman Youth Society has been operating in substandard conditions and temporary spaces. The most direct impact has been the loss our agency’s kitchen, showers and storage - with the greatest loss felt among homeless young people who don’t feel safe at neighbouring adult-serving facilities. In the interim, temporary spaces for programs such as our mental health clinic and nursing stations lack both privacy and sufficient space.

As our building required major renovations following the flood, iHuman is also redesigning several spaces to improve services for marginalized youth. Support from the Rotary Club will benefit the following programs:

Program	Description
Boyle McCauley Health Centre Nursing Clinic	<p>Boyle McCauley Health Centre operates an on-site clinic at iHuman, often the only health service that our population will access. This service is seamlessly integrated with iHuman’s range of programs and addresses common needs such as pregnancies, infections, addictions and mental health.</p> <p>The clinic will gain two additional nursing station (dedicated to triage and treatment) after renovations are complete.</p>
Outreach & Addictions	<p>iHuman’s Outreach Program is a core, front-line service for Edmonton’s most vulnerable youth. Our team of addictions, youth and social workers help navigate complex systems such as housing, mental health, justice, financial assistance and medical care. A specialized addictions worker has a caseload for this specific crisis and animates Friday Night Challenge – a support group for marginalized youth coping with the damaging effects of substance abuse.</p> <p>Outreach will gain a soft room and a venting room for escalated young people to decompress and remain safe in during moments of personal crisis.</p>
LiNKS Mental Health Clinic	<p>The LiNKS Mental Health Clinic provides assessment, counselling and emergency intervention for traumatized youth by leveraging a Relational Approach to therapy. Lead by a provisional registered psychologist, barriers addressed by LiNKS include: acute addictions, suicidal behaviours and attempts, post-traumatic stress disorder, FASD and violent behaviours.</p> <p>The clinic will benefit from improved soundproofing and additional counselling spaces following the renovations.</p>

Woven Journey
Parenting Program

iHuman's **Woven Journey** program is a parenting initiative working directly with young mothers and their children. These new families lack traditional support systems and are commonly affected by the damaging effects of intergenerational trauma (trauma in foster care, residential schools, addictions, domestic violence etc.) iHuman works with mothers to learn parenting skills, develop social networks and keep families intact.

Woven Journey's Family Room will benefit from restored flooring through support from the Rotary Club.

iSucceed
(Indigenous
Leadership &
Employment)

iSucceed is a leadership, education and employment program targeting older Indigenous youth (18-24) who communicate goals beyond immediate crisis. Common life goals at iSucceed include advanced education, sustainable employment and skills development.

iSucceed's "Warrior Room" will also benefit from restored flooring through support from the Rotary Club.

Partnerships

As an important agency for Edmonton's most vulnerable young people, several partnerships engage with iHuman to provide support to this important demographic. Key partnerships include:

- Alberta Health Services - provides additional addictions and crisis support
- Boyle McCauley Health Centre - nurses and a pediatrician provide training and on-site treatment
- Frontier College - staffs iHuman's literacy worker
- HIV Edmonton - outreach workers regularly maintain on-site hours
- Housing First - housing workers offer scheduled hours at iHuman and take referrals
- Oteenow - offers employment and training support for Indigenous iHuman youth
- Sexual Assault Centre of Edmonton - provides training and support during crisis

Key funding partnerships also include the Alberta Foundation for the Arts, the Edmonton Community Foundation, the City of Edmonton and Children's Services (Province of Alberta).

Volunteer Opportunities & Recognition

Volunteers form a fundamental part of iHuman's services, often leading creative workshops, providing child care in the Family Room, creating opportunities for connection to Indigenous culture and supporting the Mental Health Clinic. iHuman also engages with many high profile festivals requiring volunteer support (Taste of Edmonton, NextFest, Edmonton International Fringe Festival etc.) and our annual Christmas Party.

As a major supporter, the Rotary Club is invited to contribute to these volunteer efforts and other opportunities, such as preparing and/or serving a meal in iHuman's newly renovated kitchen. Through our art studios, iHuman would also like to engage the Rotary Club in creative recognition of this valuable contribution.

Appendix - iHuman Flood Response, January 2018 - Present

REVENUES	Actual to date	Forecast	TOTAL
Insurance Claim Coverage	47423.42	0	47423.42
Donations – Foundations	21598.00	0	21598.00
Donations – Individuals/Corporate	2823.00	0	2823.00
3 rd Party Fundraisers	1085.00	0	1085.00
Donation – Rotary Downtown	<u>0</u>	<u>30000.00</u>	<u>30000.00</u>
Total Revenues	72729.42	30000.00	102749.42
EXPENSES			
Programming			
Program Costs (food, etc)	234.73	0	234.73
Salaries (overtime payouts)	1867.00	0	1867.00
Capital			
Insurance Deductible	2500.00	0	2500.00
HVAC and Heating	7431.96	0	7431.96
Sprinklers/Fire Suppression	3510.74	0	3510.74
Doors, Frames, Glazing	6386.25	7500.00	13886.25
Floor		15000.00	15000.00
Electrical		20000.00	20000.00
Construction – redesign	2616.10	5000.00	7616.00
Architect – redesign	1050.00	0	1050.00
Construction – flood response	3354.98	21225.00	24579.98
Materials & Supplies	<u>9094.11</u>	<u>5000.00</u>	<u>14094.11</u>
Total Expenses	38045.87	73725.00	111770.87
NET REVENUE (DEFICIT)			(8841.45)