



THURSDAY, APRIL 4, 2024 YAKIMA CONVENTION & EVENT CENTER

*Create Hope
in the World*

ANTONE MILLER EMERGENCY PREPARATION



Did you know we have an Office of Emergency Management here in Yakima that oversees emergency management efforts throughout our state, coordinates volunteer efforts during disasters or emergency situations, and coordinates with other emergency entities such as Red Cross, FEMA, and others across the state?

The mission of Yakima Valley Emergency Management is to protect the communities of Yakima County by organizing, coordinating, and integrating all activities necessary to build, sustain, and improve the capability to mitigate against, prepare for, respond to, and recover from threatened or actual natural disasters, acts of terrorism, or other man-made disasters.

Antone Miller is the Yakima County Emergency Services Director overseeing EMS and Emergency Management for Yakima County. A Yakima native, he has 22 years of Emergency Management experience, 25 years working in EMS, and has served as a volunteer firefighter in Selah for 33 years.

Come and hear from Antone Miller about Emergency Management, the role they play in our community, how you can be prepared, and what is happening throughout our county to build “a Disaster Resilient Community.”



FOR THURSDAY'S MEETING

Greeters – Kyle Curtis, Enri Garcia-Sanchez
Invocation – Sheri Bissell
Sergeant-at-Arms – Kelly Gasseling
Program – Laura Crooks
Attendance – Jake Hambly

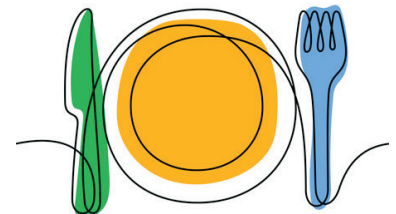
FUTURE PROGRAMS

April 11th – Deputy Leo Diaz & Sheriff Bob Udell, Yakima County Sheriff's Drone Program
April 18th – WA State Senator Curtis King, Legislative Update
April 25th – Chris Lueck, Innovations in Glass Recycling for Central Washington
May 2nd – Yakima & Selah Neighbors Network

YOU'RE INVITED TO DINNER

It's time to sign-up for the upcoming Fireside/Scholarship Dinners taking place Thursday, May 9th through Thursday, May 23rd. We currently have 17 dinner hosts and 97 signed up to attend. This is a wonderful way to get to know each other in a fun, informal setting all while enjoying a great meal.

The cost is \$125/member whether or not you attend. It includes your spouse, significant other, or guest. The proceeds support our Academic & Vocational Scholarship programs. If you don't already have your name on the list, now is the time to choose a date and contact the Rotary office or Committee Chair Soni Alexander.



PROPOSED NEW MEMBER

Unless written objection is received by the Board of Directors by Friday, April 5, 2024, the following candidate will be elected to membership:

Rebecca Thornton

Director of Development

Central Washington University

Classification: University Development

Proposed by: John Cooper

Endorsed by: Erin Black

MOLLIE DAVIS GOLF TOURNAMENT

to benefit Yakima Rotary Trust

at the Yakima Country Club

10:30am Registration & 11am BBQ Lunch

Shotgun Start at Noon

Save the date of Monday, July 22nd for the annual Mollie Davis Golf Tournament to benefit the Yakima Rotary Trust. Sign up as a single player or put together a team. You can also participate as a sponsor or as a volunteer. Sponsorship levels include an Eagle Sponsor for \$5,000, Birdie Sponsor for \$2,500 and a Hole Sponsor for \$1,500 – all include four golfers. Other options are longest drive or closet to the pin sponsor for \$500, tee or green sponsor for \$300, bar cart sponsor for \$750 or mulligan sponsor for \$1,000. Registration forms are available through the Rotary office.

REVIEW

President Erin was back at the helm this week to lead us in a meeting that included special guest musicians; opportunities to serve and have fun; the introduction of our newest member; and learn about the Maryhill Museum of Art from their new Executive Director Amy Behren who shared their history, collections, and goals for the future.

The mission of Maryhill Museum of Art is to ignite a journey of educational enrichment in the Columbia Gorge with their artistic and historical collections. Sam Hill began building Maryhill in 1914 as a mansion called Beaux-Art. It was never used to live in and in 1917, it became a place for French art to be collected and exhibited. There were four founders of Maryhill: Sam Hill, a railroad and asphalt road executive; Loïe Fuller, an American artistic pioneer who spent most of her time in Paris; Queen Marie of Romania who dedicated the museum to the public almost 100 years ago; and Alma de Bretteville Spreckels, a California philanthropist. It is the largest museum in the world with 5,300 acres of land. Among the gifts on the land are the Stonehenge Memorial erected as the nation's first World War I memorial and which was dedicated in 1918 to the servicemen of Klickitat County who died, and the Maryhill Loops Road, constructed by Sam Hill and one of the first macadam asphalt paved roads in the Pacific Northwest.

Maryhill is home to several permanent collections that are always on view. Their collections span all genres from painting, works on paper, sculpture, textiles, decorative arts, historic objects, Indigenous American art, to Ecclesiastical arts. One of their cornerstone collections is European and American paintings primarily from 19th and 20th centuries with some from the 17th century. They have one of the nation's largest collections by Rodin, considered the father of modern French sculpture. They are home to distinct collections of fashion that span French, American, Indigenous American, and Balkan collections; and are in the process of acquiring fashion and textiles to further the collection from Mexico and Central America. They are home to the Théâtre de la Mode collection created in Paris in 1945-46 to benefit the French war relief, and due to the hit show *The New Look*, has created renewed interest. The fashion collection also features Columbia River Plateau beadwork. The Queen Marie of Romania collection, jointly given by Queen Marie and Alma de Bretteville Spreckels, is gold, glitzy and beautiful. It is especially important to the heritage of the Pacific Northwest. Queen Marie visited Maryhill to dedicate the Museum in 1926.

Support from individuals and businesses makes it possible for them to offer programs to the public. Last year they offered basketweaving classes in partnership with the Yakama Nation; hosted the Plein Air Pacific Northwest juried event bringing artist across the nation; constructed an ADA walking path as part of the William & Catherine Dickson Sculpture Garden; and the exhibit of *The Hound of Heaven* which is only shown once every 10 years. Strategic goals for the future include deepening educational programs; renewing relationships with the Gorge community; improving their historic infrastructure (that includes repairs to the Stonehenge Monument); securing water rights; and strengthening the financial sustainability of the museum.

Art is something that encourages you to look and look again, and over and over. Art encourages you to say what was the artist thinking and/or how do I feel. Art is something that requires creative imagination; it helps you go outside your own daily life. Her presentation was a wonderful look at their history and the beauty of their collections. If you haven't been, it might be time to schedule a road trip.

The music, announcements, and introduction of our newest member included the following. Our special musicians were a group called Pamyua who will be playing at the Capitol Theatre on Friday (today). Their genre is described as tribal funk or Inuit soul. They were fantastic. Our newest member was Brent Elkins. Introduced by Sheri Bissell, Brent grew up in Spokane and attended the University of Washington where he played saxophone in their jazz band, wind ensemble, and the Huskie marching band. He also went to university in Scotland for a year where he took bagpipe lessons. Most of his career has been in marketing of all sorts. He currently leads the marketing technology team for BECU. He recently started a new adventure becoming a real estate agent at John L. Scott. He and his wife serve on the board and play for the Yakima Valley Community Band and the Yakima Valley Big Band. His hobbies are racket sports, skiing, bicycling, poker, and pub trivia. He belonged to the Bellevue Rotary Club for a couple of years. We are so glad to have him as a part of Yakima Rotary now!

Opportunities for fun and service were announced – fun with our annual Scholarship Dinners from May 9th through 23rd and the Rotary Trust Golf Tournament on July 22nd – and service with volunteers needed for Dozer Days April 20th-21st. Kellie Connaughton shared an update on the Rotary Playground at the Greenway. There is nothing left of the north section of the playground. The south side of the playground with the tot lot, small tractor and swings was untouched. The insurance agent has been out; thank goodness it was insured. The entire northeast section has been cleared out with a fence around it. This weekend the remaining south portion will be open for families to use. The Greenway Board has met. The next steps will be a community decision. The volume of support from the community has been tremendous – thank you!

Allocation & Review Committee Chair, Leanne Antonio presented two grant checks. The first was awarded to the World Community Service Committee on behalf of the Little Hands Big Hearts (LHBH) to make repairs due to extreme weather conditions to the Rotary Outdoor Therapy Center in Trujillo, Honduras. The Center was designed by fellow Rotarian Rod Knipper to serve children with disabilities and made possible through grants from our club and Rotary International. The amount granted was \$3,820. The second check was presented to the Yakima Valley Museum to create an Iron Lung Exhibit to support an interactive exhibit that will help visitors connect the past to present through connections between the polio epidemic and the Covid pandemic. The amount awarded was \$5,000. A special thank you to our greeters, Joel Ylvisaker and Rob McCormick; Tim Carlson for his invocation; and Steven Gustafson for his baseball themed sergeant-at-arms.