

# Landfill Tour and Waste Reduction Presentation

Lindsay Eason, Community Educator

# Comox Strathcona Waste Management Service Area



**Comox Strathcona  
Waste Management**

# CSWM Regional Service

Created after the split of the CSRD, by Letters Patent dated February 1, 2008.  
Two regional services, solid waste & hospital.

## Governance

- Unique in BC – Board of 23 directors, establishes governance policies
- Solid waste management plan (SWMP) (updating)

## SWMP Guiding Principles

- 70% waste diversion goal
- Resource recovery
- Focus education on zero waste hierarchy
- Strive towards zero pollution
- User pay & market-based incentives
- Ongoing public consultation

### Municipal Responsibility:

Collection, recycling and disposal of household waste

### Provincial Responsibility:

Establish waste reduction policies and programs

### Federal Responsibility:

Funding provided for major infrastructure, improve how Canada manages resources, improve waste reduction policies and practices



**Comox Strathcona  
Waste Management**

# Comox Valley Waste Management Centre

3699 Bevan Road, Cumberland, BC V0R 1S0  
Open seven days a week, 8:00 am to 5:30 pm  
Closed on all statutory holidays





# Video: Quick Landfill Tour



## Comox Valley Waste Management Centre



**Goal:** 70% diversion from being landfilled  
2022-2025 – Solid Waste Management Plan Update

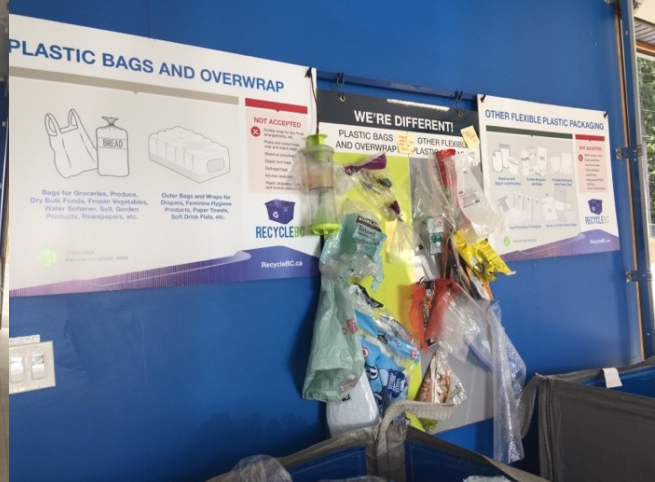
<https://www.youtube.com/watch?v=qhjaJ-BuFAI>







# Landfill update







# Recycling



## What is Product Stewardship?

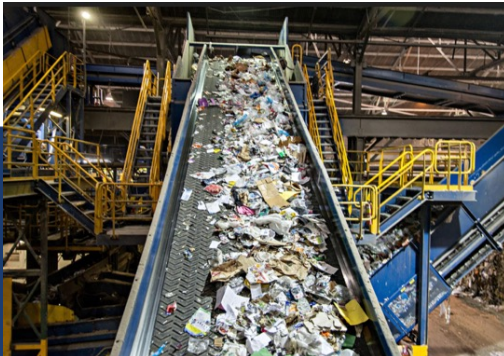
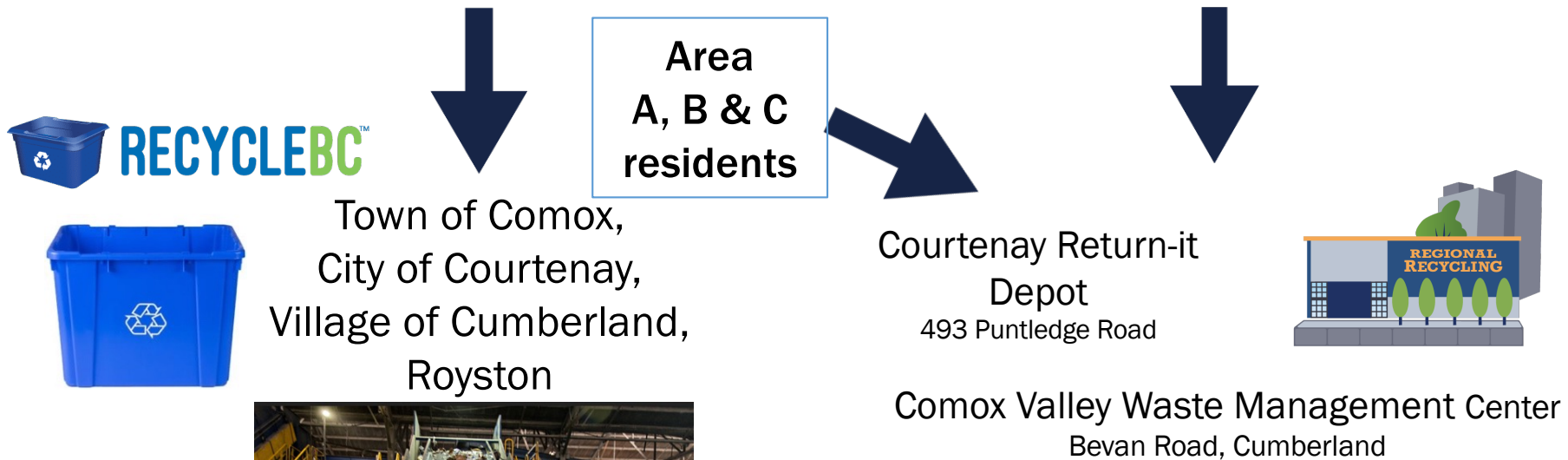
- ✓ Shift from government managed to industry and consumer managed & paid recycling programs
- ✓ Performance reporting is key – accountability and transparency
- ✓ Producer developed plans and programs
- ✓ Communities get funding for recycling programs based on what they collect



**Comox Strathcona  
Waste Management**

# Overview of Recycling

<b>CURBSIDE COLLECTION</b>	<b>Glass Food Packaging</b>
<b>Cartons and Paper Cups</b>	<b>Foam Packaging</b>
<b>Plastic Containers</b> Including plant pots	<b>Other Flexible Plastic Packaging</b>
<b>Aluminum &amp; Steel Containers</b> Including aerosol	<b>Plastic Bags &amp; Over wrap</b>
<b>Paper &amp; Paper Packaging</b>	<b>EPR Items &amp; Beverage Containers</b>





# REFUNDABLES



Leave  
caps on

Beverage  
containers  
only

# NOT ACCEPTED

- Coffee cream or other coffee additives
- Buttermilk
- Drinkable yogurt
- Infant formula
- Dietary or meal supplement
- Any dairy concentrates
- Modified milk-derived products (e.g. kefir)



**Comox Strathcona  
Waste Management**

# ELECTRONICS



Display Devices



Non-Cellular Telephones



Home Audio/Video Systems



Desktop Computers



Desktop Printers/Multi-Function Devices



Video Gaming Systems and Accessories



Musical Instruments



Medical and Monitoring Equipment



Personal/Portable Audio/Video Systems

**RETURN  
TO DEPOT**



# PRODUCT CARE RECYCLING



Paint



Household Hazardous Waste



Lights



Smoke and CO Alarms

**RETURN  
TO DEPOT**



BRITISH COLUMBIA'S OFFICIAL SITE  
ABOUT EVERYTHING RECYCLING.



bcrecycles.ca



- ✓ Alarm recycle (smoke & CO alarms)
- ✓ Small appliances (toasters, blenders, curling irons)
- ✓ Batteries
- ✓ Beverage containers (refund containers)
- ✓ Cell phones
- ✓ Outdoor power equipment
- ✓ Electronics
- ✓ Major appliances (fridges, stoves, air conditioners)
- ✓ Medications
- ✓ Packaging & Printed Paper (PPP)
- ✓ Paint and HHW
- ✓ Thermostats
- ✓ Tires (car, truck, bicycle tires & tubes)
- ✓ Used motor oil & antifreeze



**Comox Strathcona  
Waste Management**

# Organics Collection

Currently collecting organics in Comox and Cumberland  
Adding Courtenay and Campbell River early 2023



14,500 tonnes per year

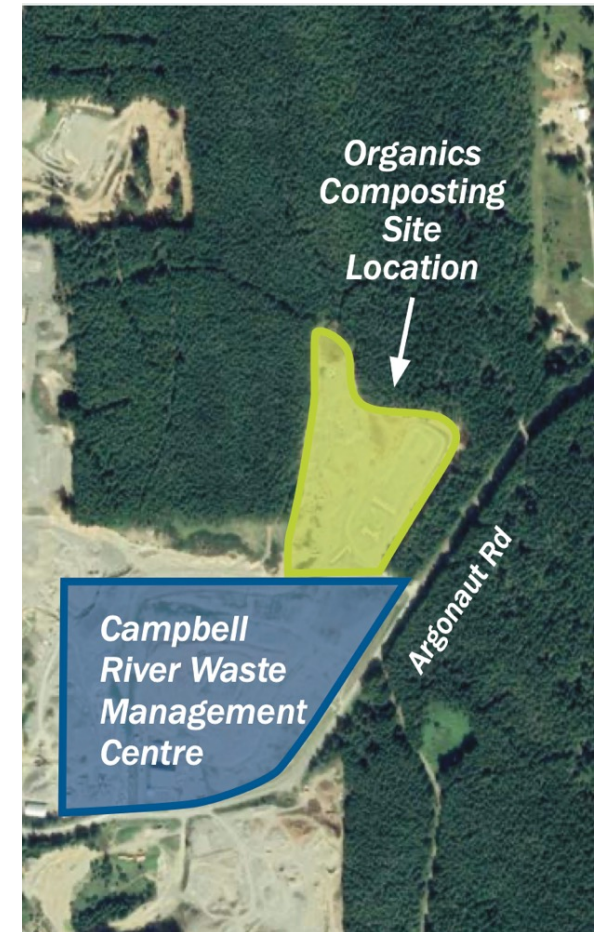
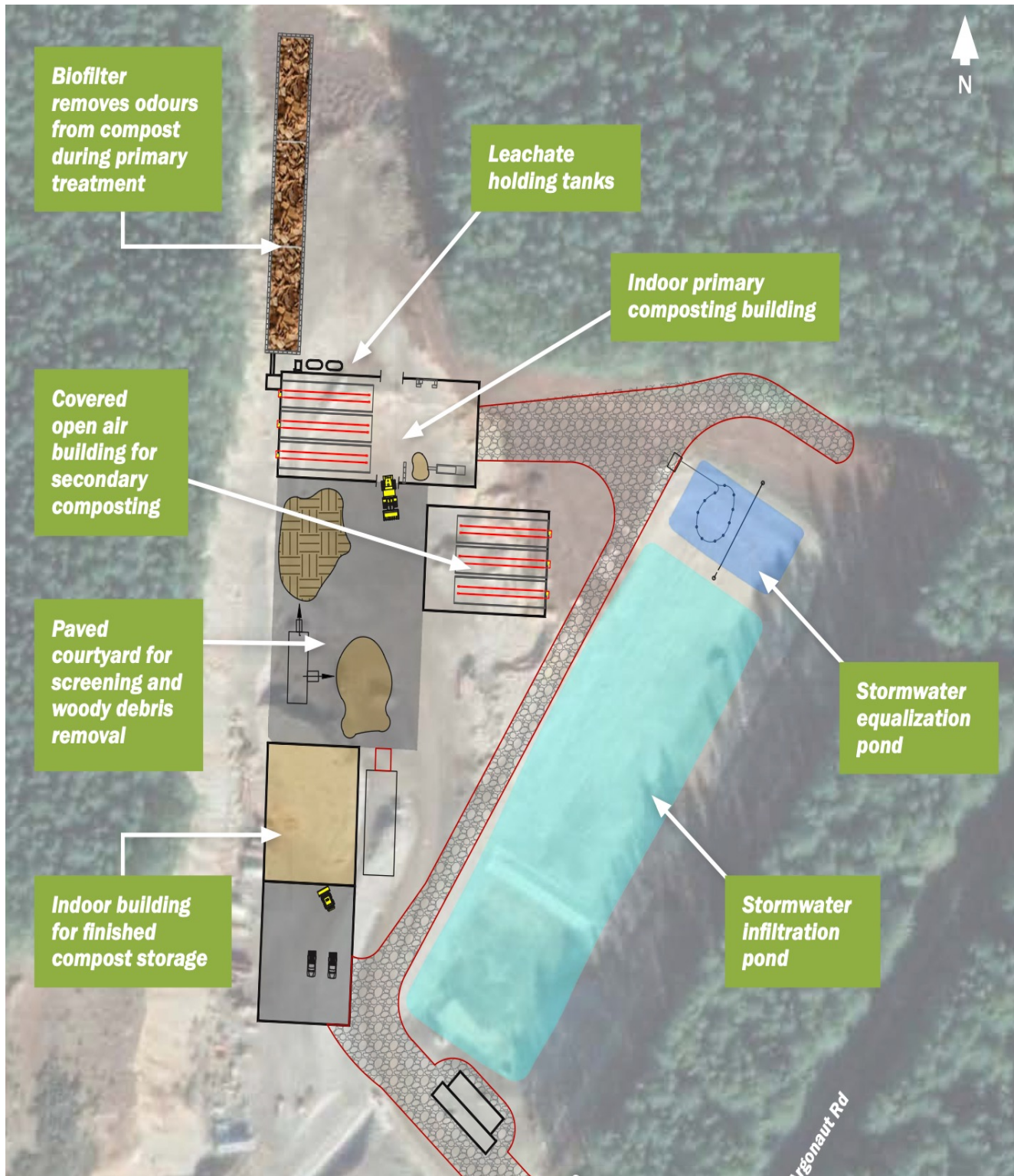


**WASTED FOOD  
COSTS AN AVERAGE  
CANADIAN HOUSEHOLD  
OVER \$1100 PER YEAR**





# Organics Facility



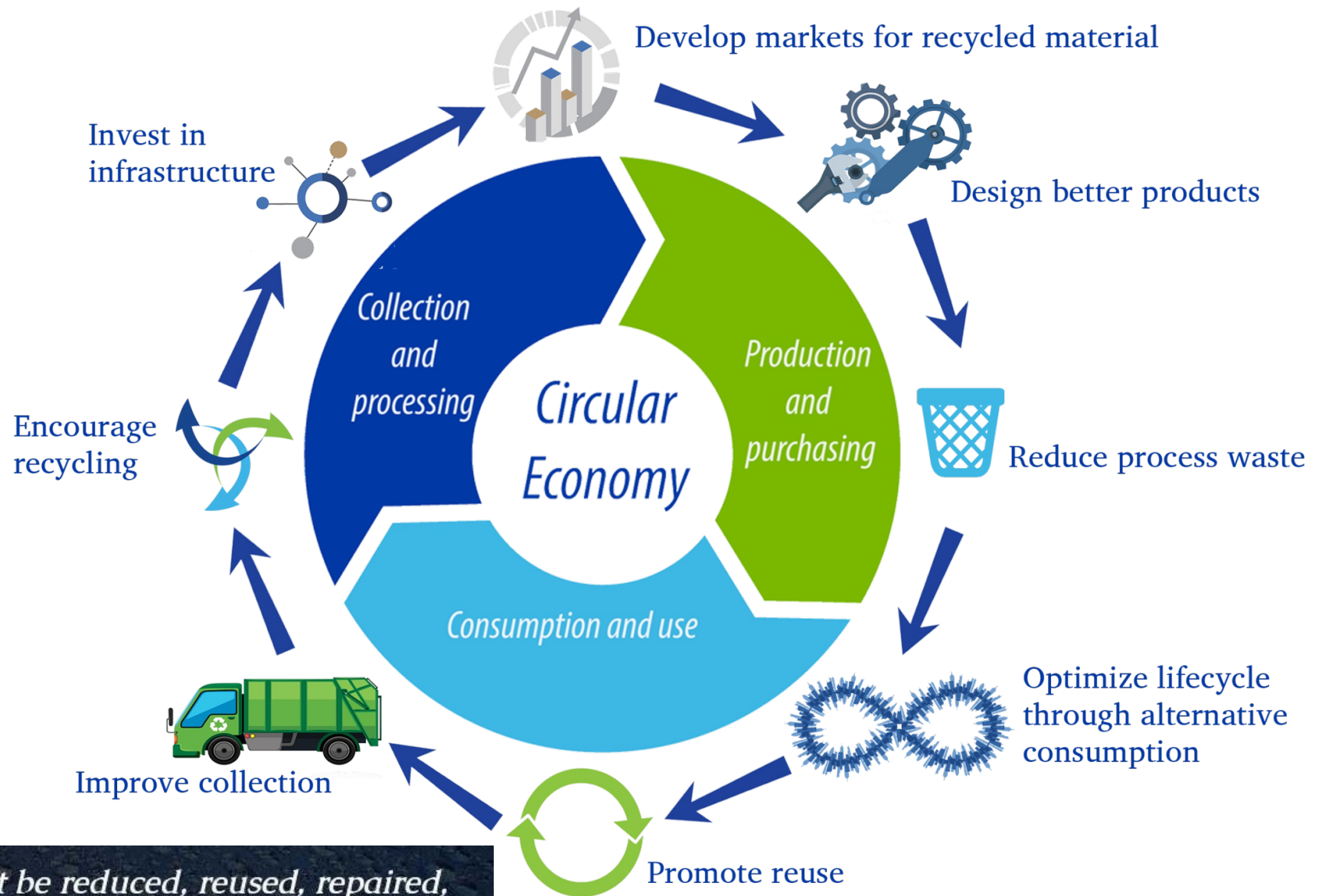
**Comox Strathcona  
Waste Management**



# Think Zero Waste

Use this hierarchy to make decisions on what you purchase and consume to lower your environmental impact and work toward zero waste.





*"If it can't be reduced, reused, repaired, rebuilt, refurbished, refinished, resold, recycled or composted, then it should be restricted, redesigned or removed from production."*

*Pete Seeger*

Image: Sustainable Global Resources Ltd.  
Recycling Council of Ontario

**Comox Strathcona  
Waste Management**



# REPAIR CAFE



**Saturday October 15, 2022**

**11:00 am to 3:00 pm**

**Lake Trail Community School**

**A free event for community members to connect and repair items with skilled volunteer fixers.**



**Bring clothing/textiles, gardening equipment/tools, small appliances, electronics, camping/fishing gear, bikes, toys and wooden items.**

**Visit [LTCES.ca](https://ltnes.ca) for more details to attend or volunteer**



# Thank you!

Lindsay Eason  
Community  
Educator

Lindsay@globalaffinity.ca  
cswm.ca

## Questions?

