



Meetings: Tuesday 12 Noon

President: Laurie Anderson  
Secretary: Ineke Boekhorst  
Editor: Peter Boekhorst

Phone: 604-816-6961  
Phone: 604-462-0377  
Phone: 604-462-0377

[E-mail the President](#)  
[E-mail the Secretary](#)  
[E-mail the Editor](#)



## DECEMBER IS DISEASE PREVENTION AND TREATMENT MONTH

### Happy Birthday

### Happy Anniversary

Dec 08: Brad & Aimee Kirkland

### Upcoming Speakers:

Dec 03: AGM – Meadow Ridge Rotary  
and Christmas Present Exchange

Dec 10: Susan Pynn  
My African Adventure

Dec 17: No Speaker  
Joint Zoom meeting with Italian Rotary Club

### RI PRESIDENT'S MESSAGE



To adapt, as laid out in Rotary's Action Plan, we must occasionally step out of our comfort zone and try something new. Here are two examples of clubs that adapted — one with heart and one through critical thinking and strategy.

The Rotary Club of Chandigarh Mid Town, India, led with heart earlier this year. To engage members and grow membership, Club President Nitin Kapur personally called every

former member of the club and invited them to a gathering billed as an alumni meetup.

Eight former members attended, and the results were stupendous. The visitors had a chance to connect once more — not only with current members but with the sense of camaraderie and belonging that membership gave them. By the end of the evening, the club welcomed six of the former members back into the Rotary family.

Club President Kapur showed courage when he reached out to the alumni. Not only did he adapt and try something new but he had the strength of character to show the club's alumni how much they still meant to the family of Rotary. That bravery paid off.

People want to feel needed and appreciated. People want to feel that they belong. And they might never feel that way if we don't have the courage to tell them.

Meanwhile, the Rotary Club of Seoul-Hansoo, Korea, has been experimenting with different club models to great effect. Over the past four years, Seoul-Hansoo has created and maintained four satellite clubs — a service club, an interest-based club for

musicians, a cause-based club that mentors professionals, and a club for college students.

These satellite clubs are part of a five-year plan the Seoul-Hansoo club implemented to increase member ship through innovation.

What's the secret to founding and maintaining so many satellite clubs? Membership between Seoul Hansoo and its satellite clubs is fluid and synergistic. Many members of the satellite clubs attend the sponsor club's meetings. And many of the sponsor club's members participate in the satellite clubs.

Additionally, the focus of each satellite club is no accident. Each one appeals to different interests of people in the sponsor club and in the community, attracting existing and potential members. This is an excellent strategy to both retain and attract members because it offers flexibility. If someone is interested in joining but they can't make it to the sponsor club's meetings, they have plenty of options to choose from.

These are just two examples of how we can adapt with our hearts and minds. Every club is different, so I encourage you to reach out to members of your club and of the community around you. Ask them about the club experience and what you can do to improve.

Talk to enough people and you might find ways that you can adapt and spark The Magic of Rotary in your club.

**Stephanie A. Urchick**  
President 2024-25

## LAST WEEK'S MEETING

President **Laurie Anderson** presided.

### Cheque Presentation

**Mike Davies** presented a cheque in the amount of \$500 to **Brenda Norrie** in support of **Help-Portrait** which is a global movement, but which operates right here in Ridge Meadows where it has impacted over 1,400 lives.



This event is free for families/individuals that could not otherwise afford photos (grad, school photos, family/holiday photos) and attendees are provided with free framed (professionally shot and edited) photos, as well as holiday music, warm food and great company. Thanks to its dedicated team of volunteer photographers, editors, hairstylists, makeup artists, and many others, their aim is to

uplift our community by enhancing self-confidence and fostering a sense of self-worth among those in need by giving them the opportunity to have family portraits for them to cherish and enjoy that they may not otherwise be able to afford.

### Program: Shea Henry – Executive Director of the Maple Ridge History Museum

#### About Our Speaker: Introduced by Mike Davies (a director of the Maple Ridge Historical Society)

**Shea Henry** is the Executive Director of the Maple Ridge Museum & Archives. Shea and the Museum staff collect and preserve, and educate the public on, the history and heritage of Maple Ridge and of the Katzie and Kwantlen First Nations on whose territory we are privileged to now live.



Shea is passionate about Maple Ridge history and telling the fabulous and diverse stories about the community's past. On this occasion Shea will be discussing the early history of Maple Ridge, and stories of the earliest settlers and neighbourhoods that make Maple Ridge special.

### Shea's Presentation



2024 Marks the 150<sup>th</sup> anniversary of the incorporation of Maple Ridge. When we acknowledge that Maple Ridge is located on the "unceded" traditional territories of the Katzie and Kwantlen First Nations, Shea observed that most people do not really know what that means. These First Nations people state that they have lived here "since the beginning of time". Archaeological evidence proves that they have lived here at least for 10,000 years. It is hard to imagine how far back that is. If you go back half of that way in time, you have the Egyptian pyramids. Double that time and you get at least 10,000 years.

In 1763 King George III of England declared that the British could not colonize North America unless they entered into treaties with the native peoples who occupied them and by which treaties the native peoples allowed the colonizers to live there. By these treaties, the native peoples ceded their land. [*"To cede" means "to give up power or territory".*] Throughout what is now Canada (except for the territory of British Columbia) this law was generally followed. However, in 1850 gold was discovered in what is now British Columbia. Out of fear that the Americans, who came up for the gold rush, would take over the territory and make it part of the United States, the British skipped this law in British Columbia and declared British Columbia to be Crown land without treaties being made. Maple Ridge and Pitt Meadows is therefore on Katzie land – on the unceded land of the Katzie people.

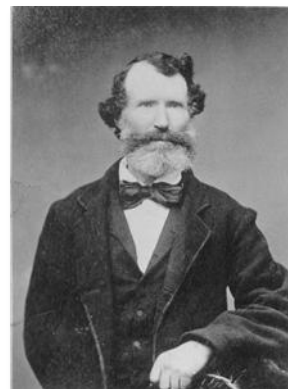
*[This is an important and significant historical fact that is recognized by this declaration.]*

People often mistakenly believe that the native peoples were just hunter/gatherers. In fact, the native peoples lived on and cultivated the land where the Hammond Mill was subsequently located. On that land was also the burial ground of the Katzie people.

Fort Langley was a fur trading post of the Hudson's Bay Company, and was first built in 1828 across the river from what is now downtown Maple Ridge, at a place approximately 4 km downstream from its present site.

*[By 1830, Fort Langley had become a major export port for salted salmon in barrels, as well as cedar lumber and shingles to the Hawaiian Islands. In the days before the Colony of Vancouver Island and the Colony of British Columbia United, Governor Sir James Douglas chose Fort Langley to be the provisional colonial capital.]*

The first settlers of Maple Ridge were employees of the Hudson's Bay Company. Two men — **Samuel Robertson** and **John McIver** — vie for the honour of being the first non-native settler in the district.



**Samuel Robertson**



**John McIver**

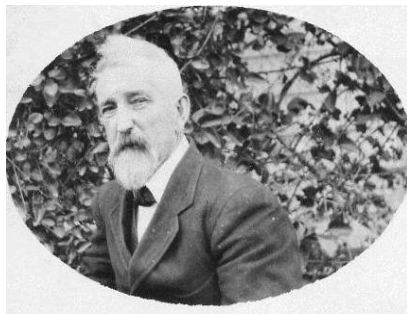
Samuel Robertson took up land on the Albion flats east and south of Kanaka Creek. Even before he took up his land grant, Samuel Robertson was crossing the Fraser to plant fruit trees on the open ground around the mouth of Kanaka Creek, so by the time he owned the land he had fruit-bearing orchards. John McIver looked to the west to the land which is now Maple Ridge Golf Course in Hammond. He named his farm "Maple Ridge" after a prominent row of maple trees on the ridge above the river. Another first settler was a 'Kanaka' man from Hawaii who was also employed by the Hudson Bay Company (HBC) in a variety of positions [He was William Kaulehelehe, also known as **Kanaka William**. The term "Kanaka" comes from the Hawaiian word *kānaka*, which means "man". The HBC recruited Hawaiians, known as Kanakas, for a variety of tasks, including shipping, trapping, hauling pelts, preserving salmon, and farm labour. Kanakas were a cheap and skilled source of labour, paid between ten and nineteen pounds a year, plus food.]

In 1858 British Columbia became a British Colony, and Samuel Robertson and John McIver were each granted 160 acres of land for the price of \$100. In those days, there were no roads and the river was the only means of transportation to get to places.

Women also played an important role in the development of Maple Ridge. They included **Anne Haney** (wife of **John Haney**), **Honor Laity** (a midwife and mother of **John Laity**), and **Mary Berry** (who married **John Charlton**).



Anne Haney circa 1885



John Haney circa 1910

On September 12, 1874, Maple Ridge was incorporated in a ceremony that took place on John McIver's farm, and became the sixth oldest municipality in British Columbia. What was the motivation to incorporate? Because the river was the only form of transportation to such places as New Westminster, the residence needed roads to be built, so they became incorporated so they could be able to levy taxes to pay for road construction.

Note: Our club thanked Shea Henry for her presentation, and she said that she would be happy to come back on another date to give us a further lesson about the history of our community. It was noted that the Maple Ridge Museum is lacking in space and funding to such an extent that it often cannot accept custody of and preserve historical artifacts that would otherwise be important to the story of Maple Ridge.

Family Matters: November 26, 2024 marked the 47th wedding anniversary of **Matt and Lynda DeBruyn**.

#### Dates to remember:

- **December 3<sup>rd</sup>** – Lunch Meeting: - AGM and Christmas Present Exchange (bring "an interesting wrapped gift with a maximum value of \$20"). We have moved the present exchange to this date as we are having the joint zoom meeting with the Italian Club on December 17.
- **December 6<sup>th</sup>** – Christmas Party at the home of Clint and Cheryl - 6:30pm.
- **December 10<sup>th</sup>** – Don't miss our special speaker – Susan Pynn – on: "My African Adventure"
- **December 17<sup>th</sup>** – Joint Zoom meeting with Italian Rotary Club.

#### Quote for the Day:

In view of Rotary's desire to make a **better world for all two-legged creatures** by following our valuable Four-Way Test in all we think, say, or do, (and in particular, "Is it fair to all concerned?"), today's quote is not just chicken feed:



Submitted by Laurie Anderson