



President: Laurie Anderson
Secretary: Ineke Boekhorst
Editor: Peter Boekhorst

Meetings: Tuesday 12 Noon

Phone: 604-816-6961
Phone: 604-462-0377
Phone: 604-462-0377

[E-mail the President](#)
[E-mail the Secretary](#)
[E-mail the Editor](#)



JUNE IS ROTARY FELLOWSHIP MONTH

Happy Birthday

Happy Anniversary

June 12: Zain & Nicole Kathrada

Upcoming Speakers:

June 10: Janine Davies
ED of Maple Ridge Hospital Foundation

June 17: Laura Ribeiro
RM Child Development Centre

June 24:

LAST WEEK'S MEETING

President **Laurie Anderson** presided.

Guests

Chantal Despot
Kathy Henderson
Ray Petersen

Program – **Marjolein Lloyd**: Shelter Box



About Our Speaker



Marjolein Lloyd ("Mar-yo-lane") the daughter of Peter and Ineke Boekhorst, joined Rotary in 2001, and is now a member of the Kelowna Sunrise Rotary Club in District 5060. She was District Governor in her District last year in 2023 – 2024 (which like our own District 5050 covers both BC and Washington State). She is currently the District Trainer for 5050, and the Club Foundation Chair for her own club. She has three children (ages 21 and 24, and a stepchild age 31) and one grandchild and another on the way.

From September 2013 to October 2023, she served the Central Okanagan as a Marriage Commissioner under contract with the Provincial government, and presided over more than 1100 weddings. She is now Certified Life Cycle Celebrant®; founded in 2001, the Celebrant Foundation & Institute is a nonprofit organization dedicated to educating and certifying personalized ceremony professionals.

Shelter BoxShelterBox was founded in 2000 in the town of Helston, Cornwall, UK by Rotarian who conceived the idea of "a disaster relief kit for a family, contained in a box for fast and easy global deployment" after watching a disaster relief broadcast on television that highlighted the difficulties that disaster relief efforts frequently encounter. That same year the Rotary Club of Helston-Lizard adopted it as its Millennium Project. Locally, they raised \$158,000CAD / \$114,000USD, and ShelterBox was born. In 2012 ShelterBox and Rotary International became official project partners in disaster relief.

ShelterBox has been Rotary's Project Partner in Disaster Relief since 2012. ShelterBox affiliates are teams set up in different parts of the world. Some of the largest ShelterBox affiliates are located in the US, Canada and Australia, but the international network of affiliates expands to more than 15 countries worldwide.

Displacement has grown every year for the last 12 years – 1 in every 25 people is forcibly displaced. That is more than double the 1 in 69 who were displaced a decade ago.



Shelterbox has supported more than 3 million people in over 100 countries who had to flee their homes due to disaster, conflict or climate crisis. The tents can withstand 125 mile-per-hour winds, but are not designed to withstand the cold. They can now supply water filters that clear water at the rate of 2 litres per minute. Every community has different needs, and they therefore receive personalized aid packages to ensure that they get exactly what they need and nothing that they don't need.

The Meadow Ridge Rotary club can become a "ShelterBox Hero Club" that has identified the continuous need to prepare for disasters so we can respond at a moments notice. Clubs are recognized based on their total annual giving during a Rotary year. There are three Hero levels: Bronze (\$1,200), Silver (\$3,600), and Gold (\$6,000).

We should consider setting up a Shelter box display as we did several years ago in the Maple Ridge Town square (a "Tea in a Tent Event"), when we set up ShelterBox tents and raised over \$50,000.

NO ONE WITHOUT
SHELTER AFTER DISASTER

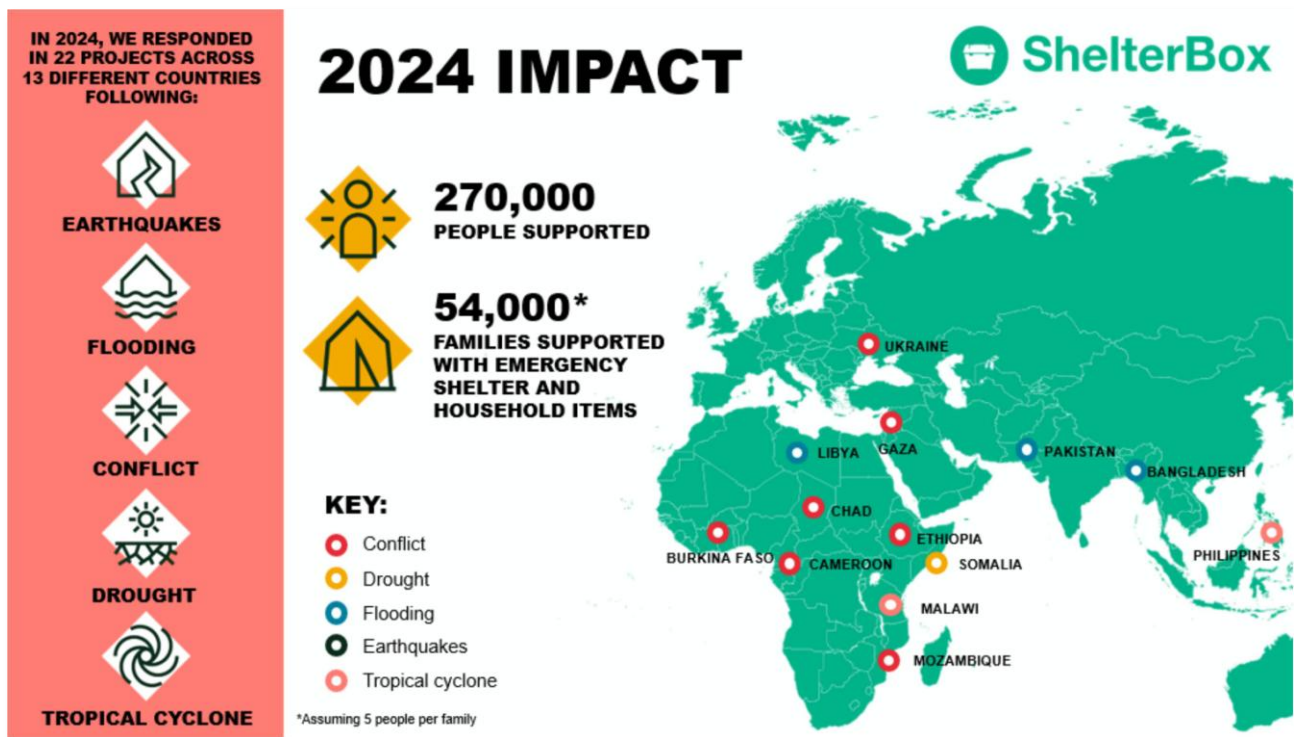








TYPES OF
SHELTER



Club Notes and Announcements

We had a fun **Club Cleanup Event** on Sunday morning, June 1, 2025 at the Kanaka Creek Park, followed by breakfast at Ronny's Bistro on River Road. Admittedly, there was not much litter to collect, but the trail must now be the cleanest public walkway in the city as every cigarette butt and bit of paper has been removed (and Ronny's Bistro now has a few more customers).



Ask Ineke for tickets to sell for the Duck Race to be held at the Maple Ridge Park on August 10, 2025, and help us get over the top with ticket sales for this important community fundraiser.

We also need volunteers each Saturday for the set up and break down of the Rotary tent, table and banner so that the community volunteers will have a place to sell their tickets at the Haney Farmers Market.



2025/2026 Board of Directors Installation Lunch:
Saturday, June 14, 2025 11:00 am at Meadow Gardens
Golf Club.

Tickets \$50 (most members already paid with their
annual dues).

Be sure to sign up with Adrienne and pay for any
additional guests through Walter.

Next Week's program:

Janine Davies – the new Executive Director of the Maple Ridge Hospital Foundation



Quote for the Day - Recovery Starts with Shelter



Submitted by Laurie Anderson