



Meetings: Tuesday 12 Noon

President: Alex Pope  
Secretary: Debbie MacRae  
Editor: Peter Boekhorst

Phone: 604-465-1535  
Phone: 604-649-8962  
Phone: 604-476-0010

[E-mail the President](#)  
[E-mail the Secretary](#)  
[E-mail the Editor](#)



## OCTOBER IS COMMUNITY ECONOMIC AND DEVELOPMENT MONTH

### Happy Birthday

Oct. 14 Brad Kirkland

### Happy Anniversary

### Upcoming Speakers:

Oct. 14 Induction of Michelle Oleschak  
Kyle Wallis  
Intl Pipe Band Competition – Scotland 2025

Oct. 21

Oct. 28

### RI PRESIDENT'S MESSAGE



October is Rotary's Community Economic Development Month, a time to spotlight our efforts to help communities build thriving, sustainable futures. This month's observance aligns perfectly with the Rotary core value of leadership.

Leadership means empowering people to guide their own progress. That is precisely what Rotary's economic development projects aim to achieve.

Take, for example, a recent initiative in southern India in which Rotary members unlocked the power of women of the Adivasi tribal groups through sewing training to earn a living and regain social inclusion. Historically, widows and abandoned women in this region lose social standing and are shunned by society or blamed for their misfortunes. Opportunities to support themselves or obtain training are minimal.

This year, the Rotary Club of Windsor Roseland, Ontario, partnered with clubs in Districts 3203 and 3234 in India — and with the Indian organization Sevalaya Trust — to provide sewing machines and training to 80 Adivasi women. They learned to stitch saree blouses, kurta tunics, and salwar suits, enabling them to support themselves and their families. Each woman received a certificate for completing the program, and the sewing-machine provider offered free long-term maintenance for the machines. The project offered vital income and dignity to women ostracized by society after widowhood.

This story is one example of Rotary leadership in action: local people guiding solutions that address their community needs. Our role is not to deliver charity or to impose outside models, but to foster self-reliance by investing in leadership, skills, and sustainable enterprise.

This October, I invite Rotary members worldwide to reflect on economic leadership in their communities. Who is stepping forward to lead local economic initiatives? Where is there untapped talent that could be supported with training or mentorship? How can your club catalyze opportunity through partnerships with local businesses, vocational schools, or savings groups?

Leadership is not always about being visible. Sometimes it means listening, working collaboratively, and amplifying the voices of others. That approach lies at the heart of Rotary's philosophy and our lasting impact on economic development.

By building capacity — whether through microcredit groups, vocational training workshops, or entrepreneurship programs — we enable communities to lead their own transformation. When people take ownership of their progress, change becomes sustainable.

Let us lead with good intention and provide support with heart. By nurturing local leadership, we can create opportunities that ripple through communities, empowering individuals, families, and societies.

Together, we can support economies that work for everyone and enact community development projects that last.

**Francesco Arezzo**  
RI President 2025-26

President **Alex Pope** presided.

Guests:

**Ray Peterson** - who has now attended several meetings.

**Michelle Oleschak** – has been approved for membership, and will soon be installed as our newest member.

Cheque Presentation:

\$10,000 was presented to **Janine Davies**, the **Executive Director of the Ridge Meadows Hospital Foundation**.



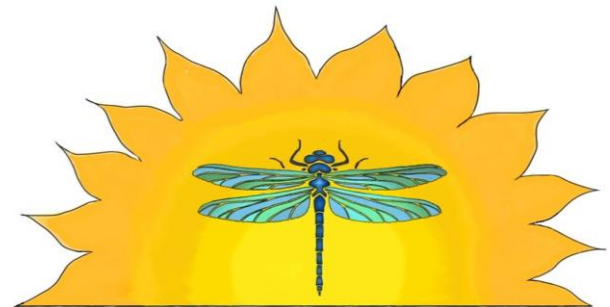
The funds will be used to purchase two vital sign monitors. A vital sign monitor is a medical device used in healthcare settings to provide real-time readings of a patient's physiological parameters, such as heart rate, blood pressure, temperature, and oxygen saturation.

These devices are essential for accurately assessing a patient's condition and health, enabling clinicians to make timely and informed medical decisions by detecting changes that may indicate illness or deterioration.

Program: **Liane Lowden** – the Inclusion Action Committee – Empowering Growth for Bright Futures from School to Adulthood



Liane has worked as an employment specialist for more than 25 years with **posAbilities** Employment Service, supporting individuals with developmental disabilities to prepare for, secure & maintain competitive employment.



**Inclusion Action Committee**

*Empowering Growth For Bright Futures*

Liane's Presentation

The Maple Ridge & Pitt Meadows Inclusion Action Committee (previously known as the LAST committee, Life After School Transition Committee), first started as a sub-committee of the Ridge Meadows Community Network. Members meet monthly to plan events and discuss resources

# Who are we?

We are a long-standing group of community service providers working together to promote inclusion. We ease the transition from youth to adult services for people with diverse abilities in our community.



[www.inclusionac.org](http://www.inclusionac.org)

## IAC - Mission & Value Statement:

- ✓Growth
- ✓Empathy
- ✓Inclusion
- ✓Community
- ✓Fun
- ✓Transitions



## The Impact of Your Support:

October is recognized as Community Inclusion Month here in BC.

It is celebration of the valuable contributions that people with developmental disabilities bring to their communities.

It recognizes and promotes the full participation of all citizens, regardless of ability, in all aspects of society.

The Inclusion Action Committee hosts an annual Community Inclusion Event every October.

**JOIN US!** Tuesday, October 28th, 2025  
Time: 11:30am—1:30pm

**BBO and PARTY!**  
**CELEBRATE COMMUNITY INCLUSION**



**Greg Moore Youth Centre,**  
11925 Haney Place, Maple Ridge  
*wheelchair access via underground parking*

**Free Concession Compliments of Kiwanis Club of Golden Ears**  
Enjoy FREE hot dogs, pop, cookies, dancing, and more!



**Bring a friend! Create Art! Dancing!!!**



**Everyone is welcome!!**  
October is Community Inclusion Month, an opportunity to recognize the hard work of individuals, families and community members who create inclusive communities and opportunities for all British Columbians with developmental disabilities.

**A Huge Thank you to our Community Partners!**



**www.inclusionac.org**

## Transition Fair:

The IAC also hosts regular Transition Fairs. This is an opportunity for people to learn more about the Services available for youth as they enter adulthood.

Many youth & families have found resources at these events that supports an easier transition.



The Maple Ridge & Pitt Meadows Inclusion Action Committee is a volunteer organization that does not have an office or location, and is completely funded by donations.

## Club Business and Announcements

Any members willing to volunteer for the Nomination Committee for the 2025/2026 Rotary Club executive are asked to contact President Alex or President Elect Eric.

Maple Ridge Youth Unlimited is having a Whist Fundraiser on October 19 – contact Alex who can forward an email to you for further information.

The Haney Rotary Club is holding its annual Pub Night Fundraiser on October 15 at the Witchcraft Beer Market and Bistro located at 22648 Dewdney Trunk Rd, Maple Ridge. Tickets are \$70.



**October 18** – International Thanksgiving and Social at Adrienne’s home.

**October 30** – Our Club’s Pub Hub for October - location to be announced.

**November 4** – Our regular Tuesday Rotary Club meeting will be held at the Royal Canadian Legion (not at Meadow Gardens Golf Club).

**November 27** – Our Club’s Pub Hub for November – at Eric’s home.

## President’s Quip for the Week

Folks are getting ready to put up their Halloween decorations soon, so it is worthwhile having a timely reminder that plastic skeletons are terrible for the environment.

Locally sourced, all-natural skeletons are much more environmentally friendly.



## Puns for the Week



A rubber-band pistol was confiscated from an algebra class, because it was a weapon of math disruption.

No matter how much you push the envelope, it will still be stationery.

A dog gave birth to puppies near the road and was cited for littering.

**Submitted by Laurie Anderson**