

ROTARY DECLARES WAR ON METH

In case you didn't read it in the Times, here is the article:

The war against crystal meth in Maple Ridge has begun. Next Thursday, Meadowridge Rotary club president Mary Robson will host an inaugural meeting to bring together community groups and organizations to form a united front against the highly addictive drug. Robson says it's quickly becoming an epidemic.

"It's the worst drug I've ever seen," Robson said, adding youth are the main targets of meth dealers, who offer the drug at cheap prices, or even for free for the first few hits until they become hooked. Getting hooked, however, can mean only using the drug one or two times.

The rapidly growing problem has led Robson to start discussions with RCMP, the school district and Maple Ridge.

"It's something in my year as president (of the MeadowRidge Rotary Club) I would like to, as a community effort, focus on...to get everyone involved that's dealing with it and get a plan," Robson said Thursday.

Robson said next Thursday's meeting at the Arts Centre and Theatre at 4 p.m. is a move to "get everyone on the same page" to better coordinate an effective attack on crystal meth.

"Basically I want to hear from all groups what their mission statements are and what their efforts are in dealing with this drug," she said.

Community groups, businesses and organizations with a vested interest in dealing with the local crystal meth problem are asked to please RSVP Reason at 463-3333 ext.2 or at maryrobson@robsonandassoc.com

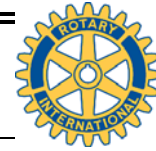
Individual members of the community can attend, but are asked to RSVP as well.



MeadowRidge Rotary & Haney Rotary Annual Golf Tournament Sept. 19, 2004



Meadow Gardens Golf Course



The Four Way Flasher

Rotary Club of MeadowRidge Newsletter

Vol. 11 Issue 4
July 27, 2004

Web-site: www3.telus.net/MeadowRidge_Rotary

Meetings: Tuesday 12pm, Gourmet Hideaway Restaurant
President: Mary Robson Phone: 604-463-3333, 2
Secretary: Carol Bartolomie Phone: 604-465-0910
Editor: Peter Boekhorst

maryrobson@robsonandassoc.com
carolbartolomie@shaw.ca
mrrotary@telus.net

INVOCATION

July 27	Ron LePore	August 3	Tim Lowes
August 10	Debbie MacRae	August 17	Kevin Nosworthy

BINGO SCHEDULE

	6:15-8:15	8:00-10:00
August 12	Mary Robson	Mina Park
Sept. 09	Ron LePore	Laurie Anderson

Call Peter at 604-465-3392 for assistance or e-mail peter.boekhorst@telus.net

TODAY'S PROGRAM: Janice Armstrong – RCMP
Eric, our Outbound Exchange Student

NEXT WEEK: Genesa Wheaton & Bob Thompson, Hospital Foundation

CALENDAR OF CLUB AND DISTRICT 5050 EVENTS:

Date	Time	Event	Venue
July 29	4 pm	Meeting about crystal meth	Arts Centre and Theatre
Aug. 11	noon	Executive meeting	
Sep. 19		Golf Tournament	Meadow Gardens Golf Course

HAPPY ANNIVERSARY

July 27: Laurie & Lorna Anderson

HAPPY BIRTHDAY

July 30: Brian Bekar

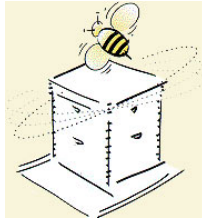
50 / 50 draw - Jackpot at \$360 + 1/2 of today's sales, 41 cards left, Jackpot on "Queen of Hearts" only!



‘HONEY OF A BARBECUE’

What a **GREAT** time we had!

If you weren't there....I guess your loss, it was just Fantastic!
 And we owe Vladimir and Zenka a **GREAT BIG THANK YOU!**
 Beautiful food, great wine, fabulous surroundings and a very interesting “Bee Talk” from our host Vladimir.....we were all soo impressed with Vlad and Zenka’s generosity and hospitality! All the food was “home-cooked” with some



“ethnic” dishes and sooo delicious, AND all donated for the occasion.....donations were taken for the Rotary International Foundation. We had an exceptional, un-forgettable and relaxed Family Social. Thanks very much again, Vladimir, Zenka and your friends that helped out, it was PERFECT!



August 2004	September 2004
Membership & Extension Month	New Generations Month
03: Genesa Wheaton & Bob Thompson, Hospital Foundation 10: Donna Telep – Fraser Health Authority 17: Fireside at Bob Shantz’s residence. 24: Don McLean – Translink 31: Jost Blom – Ex Dean of Law UBC	07: Business Meeting – Club Service 14: Who’s Who – Carol Bartolomie / Mina Park 21: New Members Meeting 28: Jim Rule – State of the Municipality
13: District Golfun @ Homestead Golf Course, Lynden, WA For information: AG John Bosch email: jb@jabcojanitorial.com 18: Deadline for Applications for Group Study Exchange Team Leader to Thailand	19: Golf Tournament hosted by the Rotary Clubs of Haney and MeadowRidge
October 2004	November 2004
Vocational Service Month	Rotary Foundation Month World Interact Week (3-9)
05: Possible Sports Banquet 12: Ken Stewart – Sandy Wakely 19: Cathy Chiu – Salvation Army 26: Vocational Service Meeting.	02: Mark Erdman Fraser – Port Authority 09: 16: Who’s Who – Murray Davelaar / Brian Fox 23: 30:

WHERE CLUBS MEET IN OUR NEIGHBOURHOOD

Abbotsford	Tue	1200	Salvation Army Cascade Ctr.	604-557-1606
Abbotsford-Matsqui	Thu	1815	King's Crossing Rest., Abbotsford	604-853-1812
Coquitlam	Wed	1215	Place des Arts, 1120 Brunette Ave.	604-941-2100
Coquitlam Sunrise	Tue	0715	City Ctr. Aquatic Complex, 1210 Pinetree Way, Coquitlam	604-468-8710
Haney	Wed	1830	Meadow Gardens Golf Course, Pitt Meadows	
Langley	Thu	1815	ABC Rest.	604-534-0144
Langley Central	Wed	1210	Newlands Golf & Country Club, Langley	604-532-4216
Langley Sunrise	Wed	0700	Redwoods Golf & Country Club, Langley	604-882-5130
Mission	Wed	0700	The Mission City Lodge	604-826-1241
Mission Midday	Tue	1200	Bellevue Hotel, 32998 1st Av., Mission	604-820-5600
Port Moody	Wed	0715	St. James Well Pub	604-760-5078
Surrey	Tue	1215	Days Inn	604-594-7293
Surrey-Guildford	Thu	0730	Ricky's Family Restaurant 8958 152 Street, Surrey, BC	604-581-3212