



Meetings: Tuesday 12 Noon, Bella Vita Restaurant

President: Adrienne Dale Phone: 778-242-5549 [E-mail the President](#)
 Secretary: Brenda Jenkins Phone: 604-816-6961 [E-mail the Secretary](#)
 Editor: Peter Boekhorst Phone: 604-465-3392 [E-mail the Editor](#)



AUGUST IS MEMBERSHIP & NEW CLUB DEVELOPMENT MONTH

Today (Aug 6): **Al Stjernegaard & Linda Beltzer** - Rotary Project in Belize

Next Week (Aug 13):

Happy Birthday	Happy Anniversary

CALENDAR OF CLUB EVENTS:

Date	Time	Event	Venue
Aug. 9	5 pm	Labeling of the "Race Ducks" at Bonnie Telep's home	21812 127 Ave. Maple Ridge
Aug. 11	11 am	Rotary Duck Race – Race at 1 pm	Maple Ridge Park
Aug. 17	10 am – 2 pm	Car Boot Sale: RM Hospice Thrift Store - Parking Lot	
Aug. 27	Noon	DG Brad Whittaker's Visit	
Sep. 6-8		Rotary Camping Weekend	Fort Camping - (9451 Glover Rd, Fort Langley)

RI PRESIDENT'S MESSAGE



During 2019-2020, I am encouraging Rotarians and Rotaractors to grow Rotary. We must grow our service, we must grow the impact of our projects, but, most importantly, we must grow our membership so that we can achieve more.

Let us try a new approach to membership, one that is more organized and strategic. I am asking every club to form an active membership committee consisting of people of different backgrounds who will look methodically at the leadership of the community.

Your club's membership committee will then apply Rotary's classification system — designed to ensure that the range of professions in your community is well represented — to identify potential leaders with the skill, the talent, and the character that will strengthen your club. If your club's membership committee is unsure how to proceed, look to the club membership committee checklist on Rotary.org for clearly defined steps to organizing its work.

How else will we connect to grow Rotary? We will also form new types of clubs — either independent clubs or satellite clubs — with different meeting experiences and engaging service opportunities, not just where there is no Rotary, but also where Rotary is already thriving.

No Rotary club in the world can possibly serve all segments of its community. Therefore, we must organize new clubs to engage the community leaders who cannot connect with our existing clubs.

Growing Rotary is all about taking the connections that make our organization unique in the world and strengthening and multiplying them. Let us commit ourselves to growing Rotary and to welcoming the next diverse generation of women and men as *Rotary Connects the World*.

Mark Daniel Maloney
RI President 2019-2020

LAST WEEK'S MEETING

President **Adrienne Dale** presided.

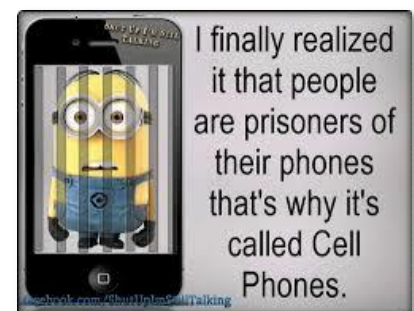
Guests (apart from our speakers):

Bernard Bezuidenhout (attending his third meeting in a row)

Irena Shantz, honorary member

Lindsay MacAulay, development officer at the ACT

Today's quote:



Happy and Sad dollars:

Guest **Bernard Bezuidenhout** - went to the Starfish Backpack fundraiser.

Brian Bekar - the Abbotsford location of his Marks Work Warehouse store was moving to a new location today, and he managed to sneak away to Rotary - leaving it up to his family and employees who moved two truckloads of merchandise without him!

Clint Callison's daughter entered 4-H at the Maple Ridge Country Fair, and was awarded top place for the Junior division.

Adrienne Dale and Warren held a fundraiser at her home for Alouette Addictions.

Ineke Boekhorst had a good time attending Music on the Wharf (which our Club sponsored) along with **Peter, Matt and Lynda Debruyne, and Laurie Anderson** (prior to the music, **Laurie, Matt, Lynda, Adrienne Dale and Eric Mollema** enjoyed getting together at the Billy Miner pub for some great pizza and beverages).



Telling us about the Centre were (rtl) Executive Director **Shawn Matthewson**, occupational therapist **Brent Fawdry**, and Human Resource Manager and Executive Assistant **Susan Carr**.



The Centre is a non-profit society funded by the Ministry of Children and Family Development, that provides early support services to children with special needs who live in Maple Ridge or Pitt Meadows, serving children from birth to school-entry age who have neurological, orthopaedic, and other developmental disabilities. The Centre offers speech and language therapy, and occupational and physiotherapy, and also coordinates a respite program. The Family Connections program offers support networking for parents, with children up to age 19, dealing with a child's challenging behaviour. Services are delivered at the Centre, in family homes, and in the community such as at preschools and day cares. The centre offers self-referral or referral from a pediatrician. School-aged children require referral from the Maple Ridge-Pitt Meadows School District for occupational therapy and physiotherapy services.

Brent Fawley is the occupational therapist with the Centre. He advised us about the Early Intervention Program that serves families of children who have confirmed or suspected developmental delays or disorders until they enter school. He helps children with self-care skills (such as dressing, toileting, feeding, and grooming), perceptual and sensory development, fine

motor development, and play skills. The Centre also helps with the provision of adaptive equipment such as splints and specialized seating.

As a Physiotherapist, Brent also helps children with their mobility and gross motor skills. He works with children to assess and improve their strength, balance, and coordination when impacted by orthopaedic and/or neurological conditions. Their goal is to enable a child to participate maximally in everyday activities and in recreation. The Centre also obtains appropriate mobility equipment such as walkers, wheelchairs and adapted bicycles for children who need them.

As noted above, the Centre is funded by the Ministry of Children and Family Development, or more correctly it is underfunded by the MCFD. There is a waiting list for children to get into the program, and further funds are always needed.

Susan Carr was previously a School Trustee and vice chair of the Maple Ridge- Pitt Meadows school board. She confirmed that the Centre is quite stretched for resources and has no emergency funding.

On September 14, 2018 the Centre suffered a catastrophic flood that damaged the building out of which the Centre operated, and forcing its closure. Since that time they have leased temporary space at the Haney Professional Building for therapy and administration, and have rented additional space at School District 42 for therapy services.

The Greg Moore Youth Centre, the Katzie First Nation, and the Prince David Society all provide space at no charge which enables the staff at the Centre to meet and support clients. Susan emphasized that early intervention gets children and their families on the right path, and is an extremely important service which is provided at no cost to the families who require this help.

Cheque presentation:

Adrienne Dale presented a cheque in the amount of **\$1,000** to **Lyndsay MacAuley**, Development Officer at the **ACT Arts Centre**, which supports, among other programs, the Arts Angels Program Bursary that assists children who require support in order to participate in arts programs run by The ACT Arts Centre, as well as funding school presentations to encourage student participation in the arts.



Did you know?: The ACT Arts Centre, open since 2003, provides Arts Programs, Gallery Exhibitions and Performing Arts Presentations, along with being home to many cultural and community events, reaching over 70,000 patrons annually. The award winning ACT Presents Season offers around 30 performances a year attracting close to 10,000 patrons annually, while the ACT Art Gallery sees over 7,000 guests. Our Arts Programs register approximately 2,500 participants annually. The ACT Arts Centre is a not-for-profit registered charity, managed by the Maple Ridge Pitt Meadows Arts Council through an operation agreement with the City of Maple Ridge, and owned by the City of Maple Ridge.



As a result of it being the birthday of **Deborah Hyslop and Brian Bekar**, Deb and Brian got to blow out some candles - while we all got to enjoy some great birthday cake!

An Old Celtic Blessing:



Submitted by Laurie Anderson

ROTARY DUCK RACE

2019 Rotary Duck Race information:

Labeling of the “Race Ducks”:

Friday August 9, starting at 5pm at Bonnie Telep’s Home.

There will be food – bring a chair and wine (if you’d like wine!)

We need EVERYBODY to assist with this, so it will be done quickly bring family if they are able to help!

Rotary Duck Race event day:

Sunday August 11, 11 am – 2pm (actual Duck Race at 1pm)

We need EVERYBODY to assist with this; many volunteer opportunities (talk to MATT)

Bring the kids/grandkids, as we have old fashioned kids games and prizes for every game!

DISTRICT 5050 EVENTS

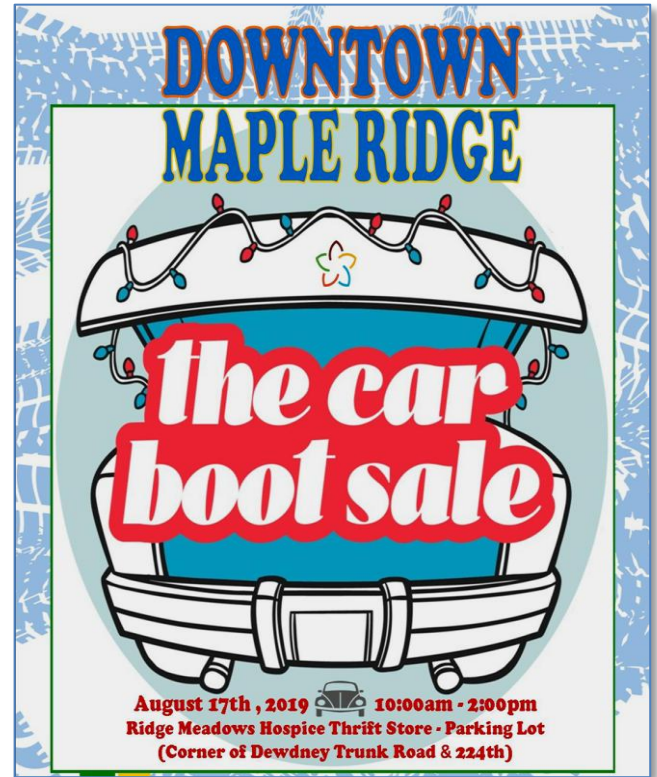
We have a great start to the year as Rotary International President Mark Maloney will be visiting our District and there are two opportunities to interact with him.

The first is a District event where you can meet and chat with President Mark on Saturday, August 17, from 4 – 6 pm, at Kwantlen Polytechnic University Spruce building, 12666 72 Ave, Surrey, BC. This is where the District holds the District Assembly. I encourage you and your family to come to the event. Tickets are \$25 CDN and children under 12 are admitted free. Rotarians can register at ri-president-mark-maloney-reception.

President Mark will be speaking at 30th Anniversary Gala Dinner of Canadian Eyesight Global on Sunday, August 18, starting a 6 pm (doors open at 5 pm) at the Grand Taj Banquet Hall, 8288 128 Street, Surrey, BC. Tickets of \$50 CDN can be purchased at CanadianEyesight.org.

The District GOLFUN is on Friday, August 23, at Homestead Golf and Country Club in Lynden, WA, where one can golf and have dinner ([golfun-2019](#)) or just have dinner ([golfun-2019-dinner-only](#))

ROTARY CAR BOOT SALE



- We need donations of garage sale items. (No baby seats/cribs or large furniture items)
- Everything needs to be clean and “working”.
- Call Peter or Ineke for drop off/pick up. (604-465-3392)
- We need volunteers for 2 hr shifts on Aug 17.
- Assistance required for set up, pricing, sales and break down.
- All remaining leftover items will be donated to the Ridge Meadows Hospice Thrift Store
- 100% of proceeds to Rotary projects.