

**Rotary**  
Club of Kelowna Capri



# CAPRI ECHO

**January 6, 2021**

**Newsletter for the Rotary Club of Kelowna Capri  
Edited by John Mullock**

**President  
Secretary**

**Ron Becker  
Carola Spek**

**President Elect  
Treasurer**

**Carola Spek  
Lockie Bracken**



- |        |  |
|--------|--|
| Jan 7  | Brian Elliott; Restor Missions   |
| Jan 14 | Dr. Greg Wallace; eyecare and the mustaches of Movember.                                   |
| Jan 21 | Barb Penner (Sunshine Rotary); Honouring Indigenous Peoples and the role Rotary is playing |
| Jan 28 | Angela Stadnyk, Salvation Army Kettle Campaign   |
| Feb 4  | Carli Gruber; former Outbound Rotary Exchange Student                                      |
| Feb 18 | Pam Laing; Birds of the Okanagan   |
-

## ZOOM MEETING

There have been no meetings since December 17<sup>th</sup>.

## A CALL FOR HELP

I was wondering if you could add something into your newsletter for me. I believe your readers would be better to assist me than my friends.

"Looking for some help and knowledge with starting up my 1927 John Deere Model D tractor. Got taken apart and put back together again, but having troubles starting her. Didn't take the magneto apart.

If you know how to operate or have some tips, feel free to contact me."

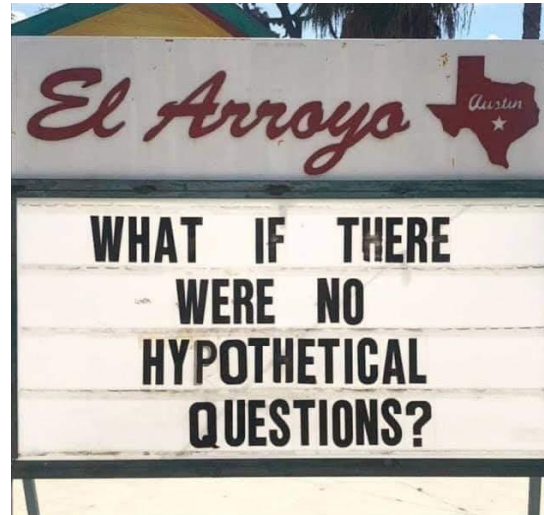
Reto Gebert

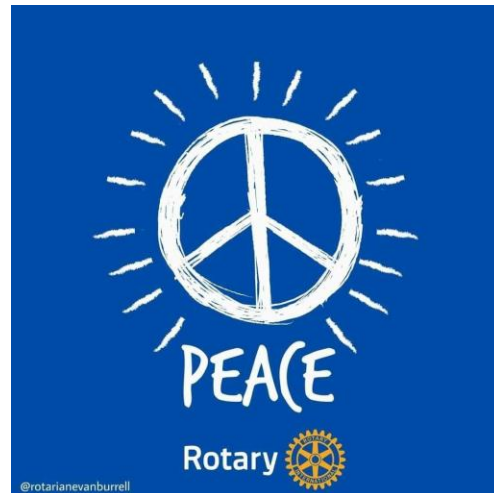
[reto.gebert@hotmail.ca](mailto:reto.gebert@hotmail.ca)

Cell: 250-575-4191



## SIGNS SIGNS EVERYWHERE THERE'S SIGNS





**Rotary Christmas Lights** – Nothing to report.



**Peace Action Group** – Lockie has built some 12-inch-tall Peace poles for sale. These peace poles are for sale for a cash donation of \$20.00. Note that they are now available in white lettering.



## Annual General Meeting

The Annual General Meeting was conducted on December 17<sup>th</sup> by Bob to elect next year's Executive and Board.

### Rotary Year 2021 – 2022

President – Carola Spek  
 President Elect – Carola Spek (2 year term)  
 Vice President – John Mullock  
 Past President – Ron Becker  
 Secretary – Carola Spek  
 Treasurer – Lockie Bracken

Directors  
 Public Relations – John Mullock  
 Foundation – Ron Becker  
 Peace Builder Club – Jack Degruichy  
 Members at Large – Art Gillan, Glenna Gillan and Mike McGee

## WHAT IS THE GOAL OF ROTARY FOUNDATION GRANTS? (2 OF 2)

During the past 100 years, the Foundation has spent over \$3 billion on life-changing, sustainable projects. With your help, we can make lives better in your community and around the world. The Rotary Foundation impacts communities through our grants program, which offers four opportunities for funding. Last week we talked about district grants and global grants – let's look at the final two options today:

**Programs of Scale Grants** – fund activities that benefit a large number of people in a significant geographic area using a sustainable, evidence-based intervention with measurable outcomes and impact. Each grant will support, for three to five years, activities that align with one or more of Rotary's areas of focus.

*How it works:* Each year, one approved project will receive \$2 million from The Rotary Foundation's World Fund. Applicants are strongly encouraged to supplement Foundation funding with resources from multiple other sources, and to work with an experienced partner, such as a nongovernmental organization, private institution, or government entity.

**Disaster Response Grants** – fund small-scale, short-term activities that address needs caused by natural disasters in your community. Activities include providing basic items such as water, food, medicine, and clothing.

*How it works:* Districts in an affected area or country may apply for a maximum grant of \$25,000, based on the availability of funds. A district may apply for subsequent grants after it successfully reports outcomes from previous grants.

**As Rotarians, we are eligible to participate in any one of these programs. Which one interests you?**

## LATEST KGH FOUNDATION FUNDRAISER

With JoeAnna's House up & fully operational for a year now, and (hopefully) having made it through the worst of this pandemic, the KGH Foundation is shifting our focus to supporting advanced stroke care at KGH and throughout the region.

This is one of Interior Health's top priorities and is a service that is both crucial and long overdue. We know that when a stroke happens, every moment matters. The effect of Stroke can be devastating on patients & their families and with the community's support, we're hoping to centralize stroke care and provide advanced stroke equipment, create a stroke care network, and establish a strategic innovation stroke fund (you can find more information in the booklet attached). *(Editor's note – I will insert it)*

Our campaign for this project will launch publicly in early March but I wanted to share our plans with you in advance of this. As a valued partner and leader in our community, you have played a huge part in advancing health & patient care over the years and for that we can't thank you enough.

I appreciate that this has been an extraordinary year and the pandemic has likely affected many of your fundraising efforts. If advanced stroke care is something your Club might consider supporting, or you'd like to hear more about our plans with a more fulsome proposal or presentation, please just let me know. We are grateful even for your consideration.

Chandel

**CHANDEL SCHMIDT, CFRE** | *Director of Annual Programs*

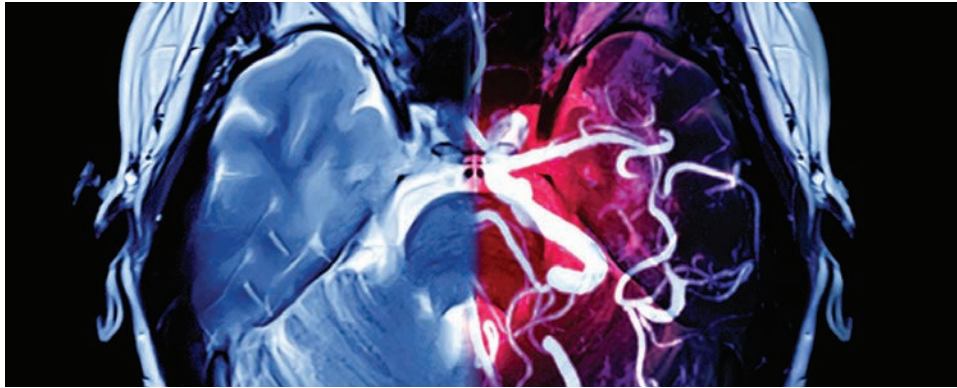
EVERY MOMENT MATTERS



A campaign to bring Advanced Stroke Care  
to Kelowna General Hospital.

**KGH**FOUNDATION

EVERY MOMENT MATTERS.



A stroke is an abrupt loss of brain function caused by a sudden brain blood vessel blockage or rupture.

Strokes can happen at any age, but prevalence rises sharply after age 55.

Last year in British Columbia, there were over 8,100 reported cases of stroke. Every year, the numbers continue to grow.

While advancements in acute care, treatment and rehabilitation for stroke patients have been made in recent years, the grim reality of stroke is sobering; it is still the leading cause of long-term disability in adults and regrettably, the third leading cause of death. Behind the statistics are our loved ones, and thousands of families whose lives are changed forever by the devastating impact of stroke.

**#1**

Stroke is the leading  
cause of disability

**1 in 6**

People will suffer a  
stroke in their lifetime

**2M**

Two million brain cells die  
per minute after a stroke



A high-angle, motion-blurred photograph of a woman lying on a stretcher, being transported by paramedics. The woman is wearing a white shirt and dark pants, and has an oxygen mask over her nose and mouth. She is secured to the stretcher with black straps. A paramedic in an orange and black uniform is visible on the right, and another in a black and yellow uniform is on the left. The background is a blurred hospital corridor with orange and white walls. The overall tone is urgent and clinical.

WHEN A STROKE OCCURS,  
EVERY MOMENT MATTERS.



A photograph of a hospital entrance at night. A white ambulance with flashing red and blue lights is blurred in the foreground, moving from left to right. The hospital building has a large, illuminated sign that reads "EMERGENCY" in red, block letters. Below the sign, there is a glass entrance area. A sign on the glass door points left and says "ACCESS TO MAIN ENTRANCE". The scene is lit by the hospital's interior lights and the ambulance's emergency lights.

CURRENTLY, THE NEAREST  
STROKE CENTRE IS LOCATED  
400KM AWAY IN VANCOUVER, BC.



## ADVANCED STROKE CARE.

### **Following a stroke, immediate access to a hospital offering advanced stroke care is critical.**

Currently, patients requiring advanced stroke care are transported to Vancouver for treatment. Time is of the essence, and all too often, this delay simply cannot be afforded. That's why the KGH Foundation is raising \$8 million to centralize stroke care, right here at KGH. This is a revolutionary plan, which will address stroke treatment and prevention by providing the following:

#### **Advanced Stroke Equipment**

Restoring blood flow to the brain is the cornerstone of therapy for stroke patients. The acquisition of equipment and clinical space required to implement Endovascular Thrombectomy Neuro-interventional service (EVT), the new standard of care for acute ischemic stroke, at Kelowna General Hospital is fundamental.

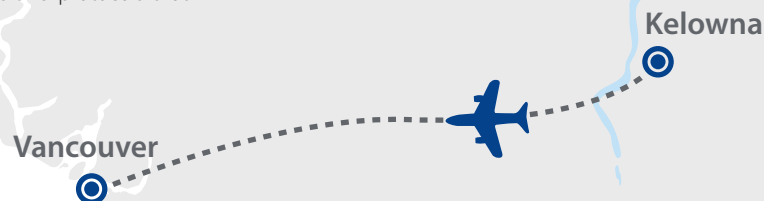
#### **Stroke Care Network**

Through patient access, rehabilitation, research and quality improvement, a centralized network of stroke care is paramount. Funding will support on-site development of skills and protocols that will

be replicated interior-wide. Stroke Telehealth will connect rural patients to world-class specialists and diagnostics from their home communities. And the proposed KGH Centre of Excellence for Upper Limb Recovery and Post Neurologic Injury will improve access to advanced rehabilitation services for stroke patients.

#### **Strategic Innovation Stroke Fund**

The development of the KGH Foundation's Stroke Innovation Fund will support projects, initiatives and equipment aimed at reducing the impact of stroke for those living in the Interior Health region, in particular, rural, remote and First Nations communities.



TOGETHER, WE CAN.



**The comprehensive nature of this approach to stroke care – addressing the sustainability and efficiency of care, along with attention to transport and capacity building through virtual care – is truly the first of its kind in Canada.**

**But we need your help.**

Together, we can reduce the devastating impact of stroke. Together, we have the capacity to drive health care forward in our region.

By working together to transform stroke care in the southern interior, we measurably and significantly improve the short and long term outcomes for regional patients. And, most importantly, save lives.

The benefactors are more than just patients; they are our family members, friends, colleagues and neighbours.

When every moment matters, we can be ready.

**55**

Stroke incidences  
double every 10 years  
after the age of 55

**80%**

of strokes are  
preventable



TOGETHER, WE CAN REDUCE THE  
DEVASTATING IMPACT OF STROKE.





When every moment matters, we can be ready. Please give.  
[www.kghfoundation.com](http://www.kghfoundation.com)

**KGH**FOUNDATION

**Cottonwoods Christmas Party** – we received a few pictures of our Christmas greeting video being shown at Cottonwoods.



If you ordered a meal, bought a product, made a donation, bought a gift certificate, volunteered to drive, told a friend about us, posted about us, messaged or emailed us with encouraging words, Thank you, thank you, thank you. This number is because of you.

Julian and Owen Wallace



## THIS WEEK'S MEETING



Thursday, January 7<sup>th</sup>.

Brief social 6:45 – 7 pm

Meeting begins - 7 pm.

A ZOOM link will be sent out by Carola Spek.



What really made my Christmas was our community working together so that we could deliver Relvas Catering Christmas dinners and wrapped presents to all of our client families. Their appreciation and joy was the best thing to behold ever

Without further ado, I am so proud to announce the final number of family meals in 2020, donated by our community and delivered by the Nourish Families Initiative:

**1188.**

## HUMOUR

WHEN YOU GET A NICE AND WARM RUBBING  
ON YOUR BACK IN THE MIDDLE OF THE NIGHT



BUT REMEMBER THAT YOU LIVE ALONE

**DUE TO MY  
ISOLATION. I  
FINISHED 3 BOOKS  
YESTERDAY.  
AND BELIEVE ME.  
THAT'S A LOT OF  
COLOURING.**

**There is a spike  
in Covid cases  
because there's  
a spike in  
testing.**

**If we had more  
IQ tests, there  
would be a spike  
in morons, too.**

## GUEST SPEAKER

Nothing to report.



## GALLERY

Early morning, New Year's Day at the zoo.  
No lockdown, no social distancing...



## ADVERTISING

**Ron Becker FIC, RHU**  
Financial Security Advisor

Phone: (250) 862-3959      110 - 565 Bernard Ave.  
Fax: (250) 862-8959      Kelowna, BC V1Y 8R4  
Email: ronbecker@telus.net

Licensed Assistant: Darcy Letendre ACS AIAA  
Phone: (778) 363-3168  
Email: darcyletendre@telus.net



**White's Barbecue and Fireplace Centre**  
160-2000 Spall Road, Kelowna, B.C.  
V1Y 9P6      250-862-3240  
[www.barbecueandfireplacecentre.com/](http://www.barbecueandfireplacecentre.com/)

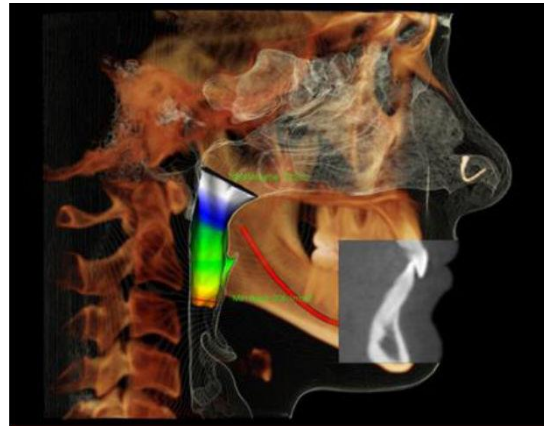
 **TRI STAR TRAVEL**  
and *Cruise*

**Art Gillan**  
Owner

4585 Anhalt Road  
Kelowna, BC V1W 1P7  
Tel: 778-477-8600 ext. 200 Fax: 778-477-5727  
E-mail: art@tristartravelandcruise.com  
Web: www.tristartravelandcruise.com  
1-800-661-2254

A Travel Member Of  
**ENSEMBLE**  
TRAVEL Group  
Experience the world with passion

B.C. Reg. #1660



Okanagan's Dental Cone Beam CT Specialists

**CANADIAN**  
**digitalimaging** 


Better Imaging, Better Results. Call CDI today!  
T. 250-862-2468 | F. 1-888-463-0167 | [cdikelowna.com](http://cdikelowna.com)  
Dr. Jack DeGruchy

**RE/MAX**  
OF WESTERN CANADA

**Peter Spek**  
Manager, Technology Innovation

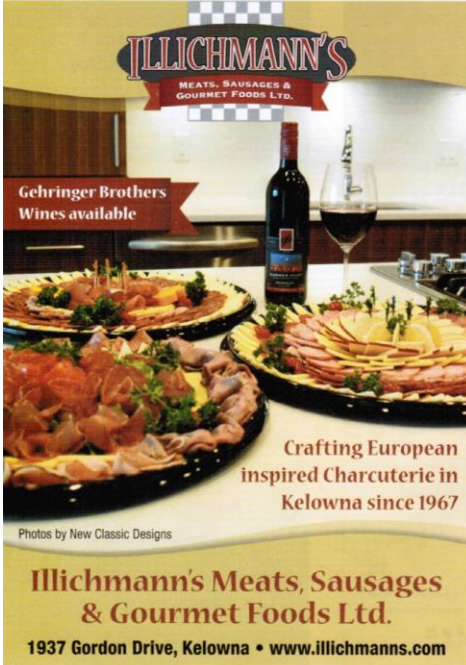
T: 250 860 3628  
800 563 3622  
C: 778 363 8289  
[pspek@remax.net](mailto:pspek@remax.net)  
[www.remax.ca](http://www.remax.ca)

340 - 1060 Manhattan Drive  
Kelowna, BC V1Y 9X9



Residential | Commercial | Luxury

Each Office Independently Owned and Operated.



**ILlichMANN'S**  
MEATS, SAUSAGES &  
GOURMET FOODS LTD.

Gehring Brothers  
Wines available

Crafting European  
inspired Charcuterie in  
Kelowna since 1967

Photos by New Classic Designs

**Illichmann's Meats, Sausages  
& Gourmet Foods Ltd.**  
1937 Gordon Drive, Kelowna • [www.illichmanns.com](http://www.illichmanns.com)

[www.illichmanns.com](http://www.illichmanns.com)