

Brawn Family Foundation Rotary Mental Health Park

In early 2020, Rotary Centennial, Rotary East and Rotary North began working with the Parks Foundation Calgary and the Alberta Children's Hospital Foundation to develop a park adjacent to the new Alberta Health Services new children and adolescent mental health day hospital on 17 A Street NW in Calgary. The concept was to develop the park as a District 5360 project as the catchment area for the hospital is southern Alberta the same as for District 5360. The hospital is currently under construction with completion scheduled for late 2022.

Prior to COVID it was estimated that there were over 80,000 Alberta children and adolescents requiring help for mental issues such as depression. COVID has only made mental health even more prevalent in children. Research has shown that mental health is improved by taking walks in parks or beside water.

A landscape architect was engaged to develop a conceptual plan to transform a green space owned by the City of Calgary located just north of the hospital into a purpose-built mental health park. Discussions were held to get input from the local communities. Once the conceptual design was completed a fund raising was undertaken focussing on District 5360 Rotary clubs.

The drawing below shows 7 distinct zones within the park to help offer tranquility, exercise facilities to burn off stress and energy, areas for relaxation and more that can be prescribed by the staff of the hospital for the young people.

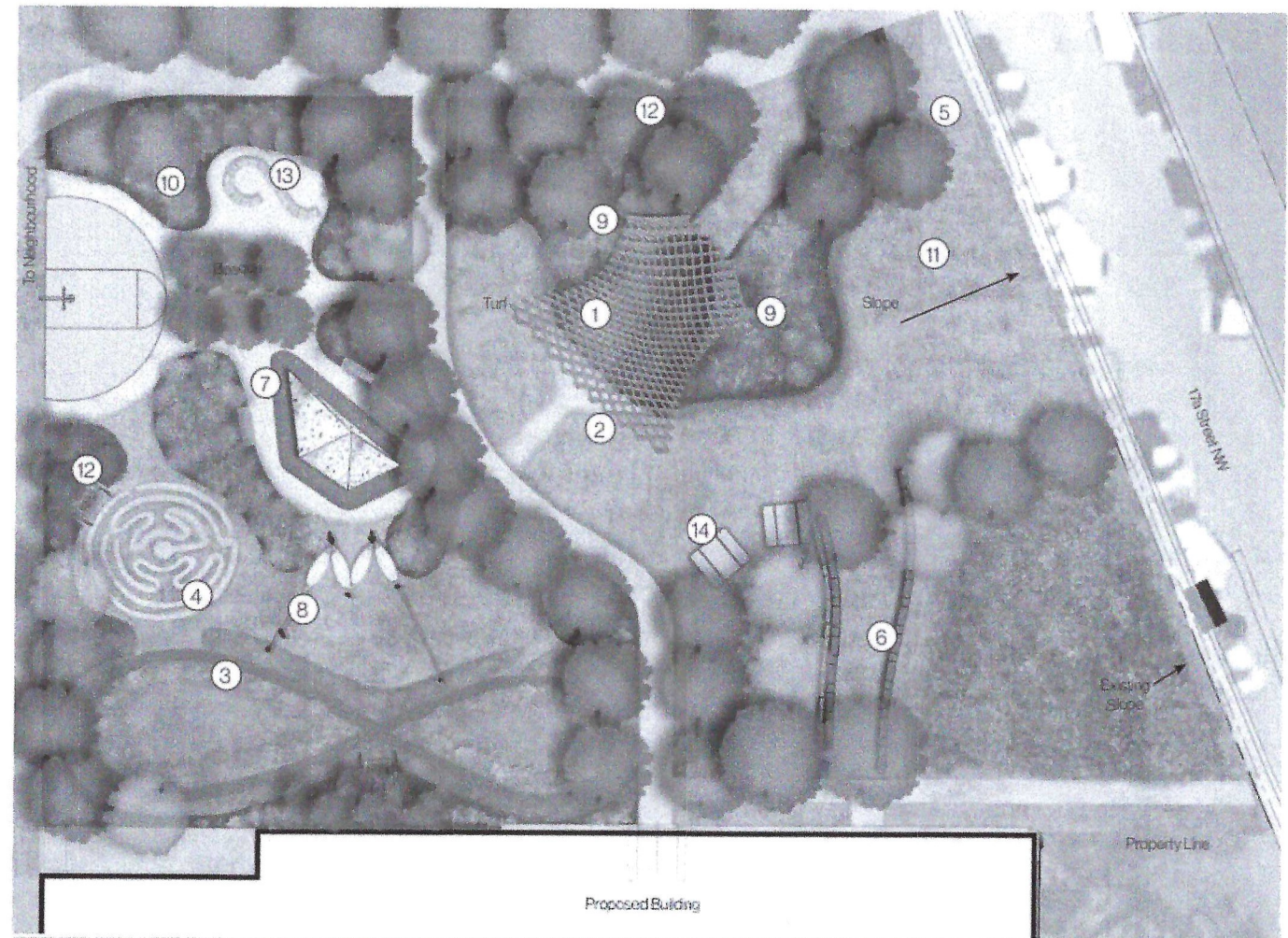
The Brawn Family Foundation was impressed by the concept and committed a significant donation such that the naming rights for the park were awarded to the Foundation.

Funding for the construction of the park was estimated at about \$925,000 and a sustainability fund of at least another \$200,000. Funding was completed in February 2022. Applications for development and construction have been submitted to the City of Calgary. Tenders for construction will be requested in April 2022, with construction to be started in late May and completion in October 2022.

PARK FEATURES SEVEN DISTINCT ZONES TO SUPPORT FAMILY & YOUTH NEEDS

Master Plan

- ① Pavilion
Formal Planting
Informal Seating
CCAMH Signage
- ② Pavilion Flex Space
Informal Seating Node
Central Node of the Site
Room for Small to Medium Groups
- ③ Garden Space
Edible Garden Border
Prairie Garden Middle
Infinity Loop Walking Path
- ④ Labyrinth
- ⑤ Community Pathway
2.0m Width Asphalt Community Pathway
Mixed Screen Planting to Adjacent Properties
Multi-Use
Through-site Access
- ⑥ Retaining Seat Walls
Slope Retained to Create an Inwiring Space
Informal Seating
Stacked Sandstone
Interspersed Planting
Retains Surrounding Existing Vegetation
- ⑦ Activity Area
Low Screen Planting to Community Pathway
Three Point Basketball
Climbing Structure
Bosque Planting
Bench Seating
- ⑧ Activity Area
Lawn Tightrope Slack Line
Hammock Sculpture
- ⑨ Prairie Garden
- ⑩ Mountain Garden
- ⑪ Landscaped "Bowl" Slope
Slope Creates a Feeling of Presentation
Trees Line Sides, Creating Sense of Entry
- ⑫ PFC Swing Bench
- ⑬ Curvilinear Seating
- ⑭ Picnic Tables



Scale 1:300

Design Development Concept #4