



Engagement of Diverse Voices in Transforming Educational Program and Facility Planning

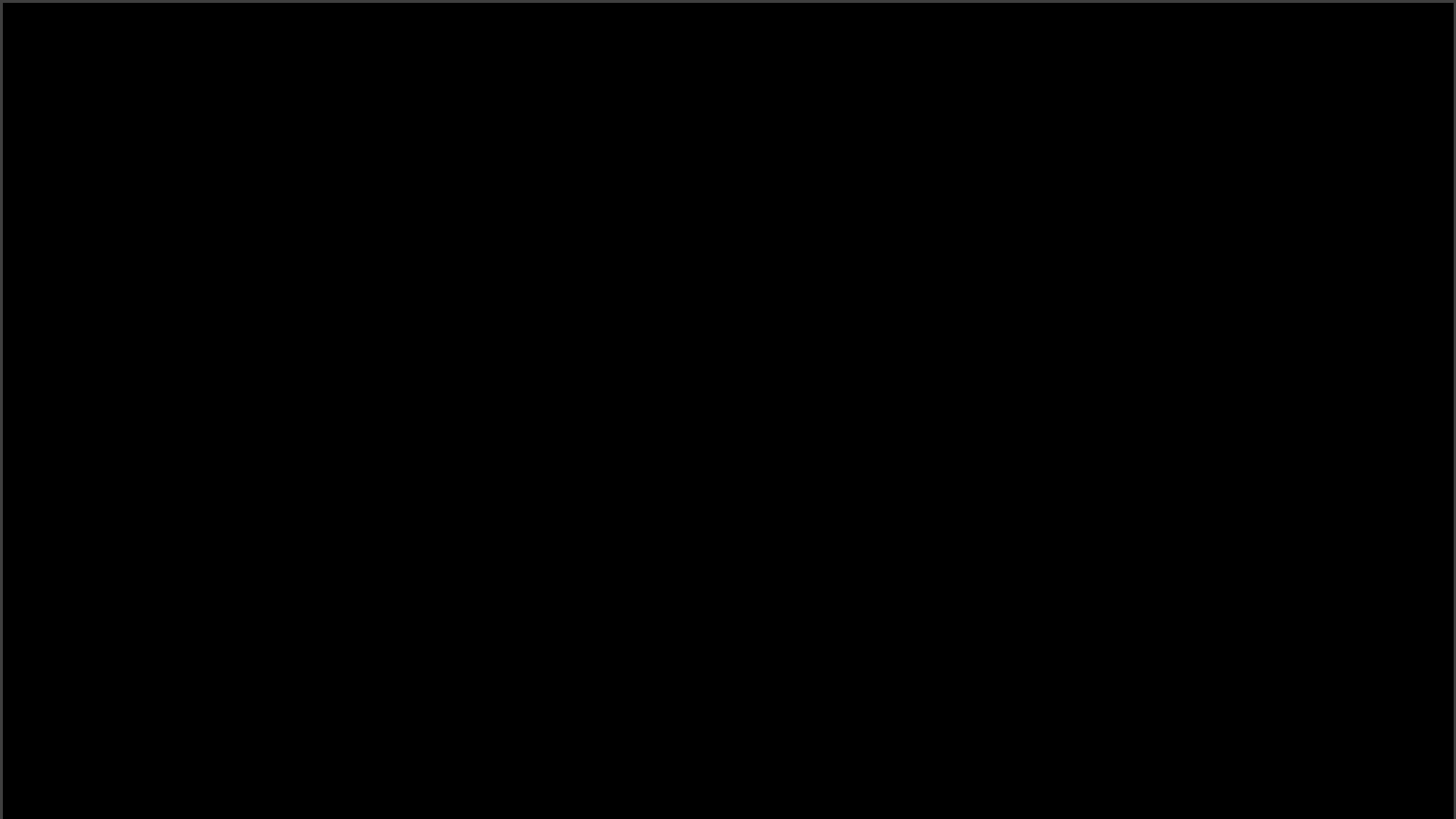
Greater Saskatoon Catholic Schools

October 11th, 2022



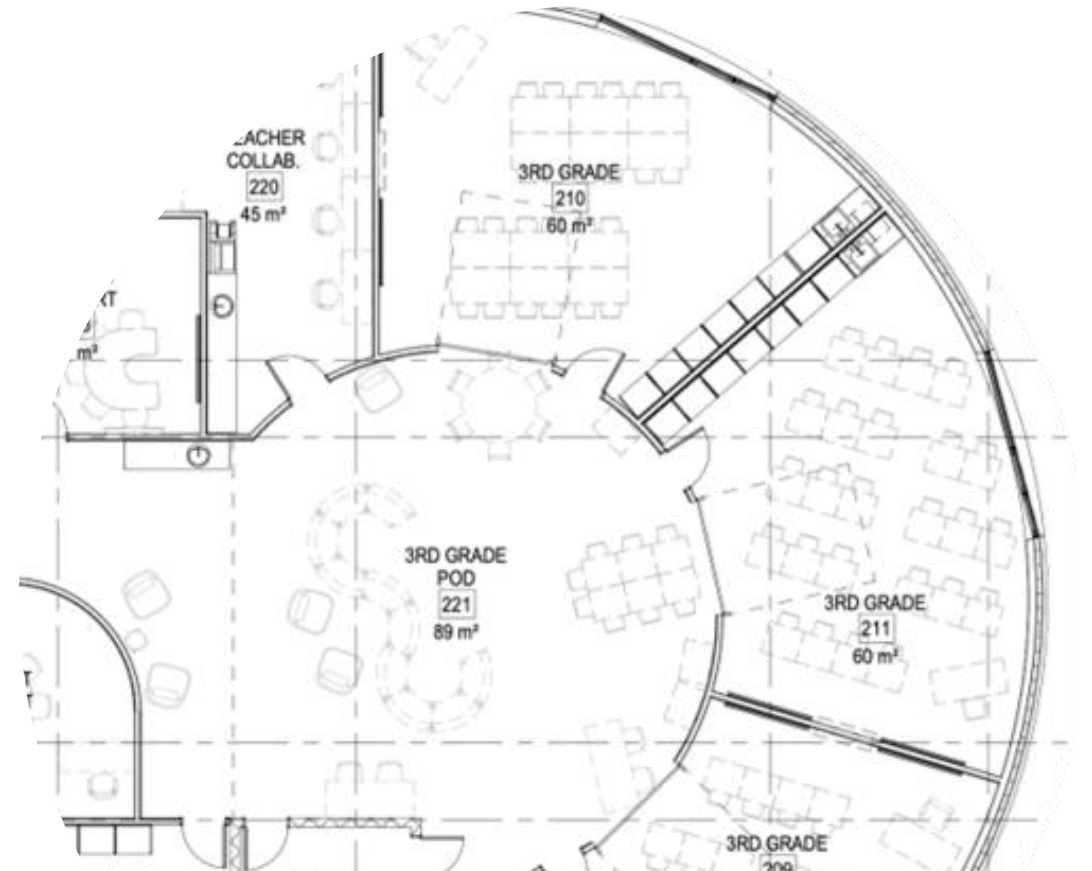
Overview

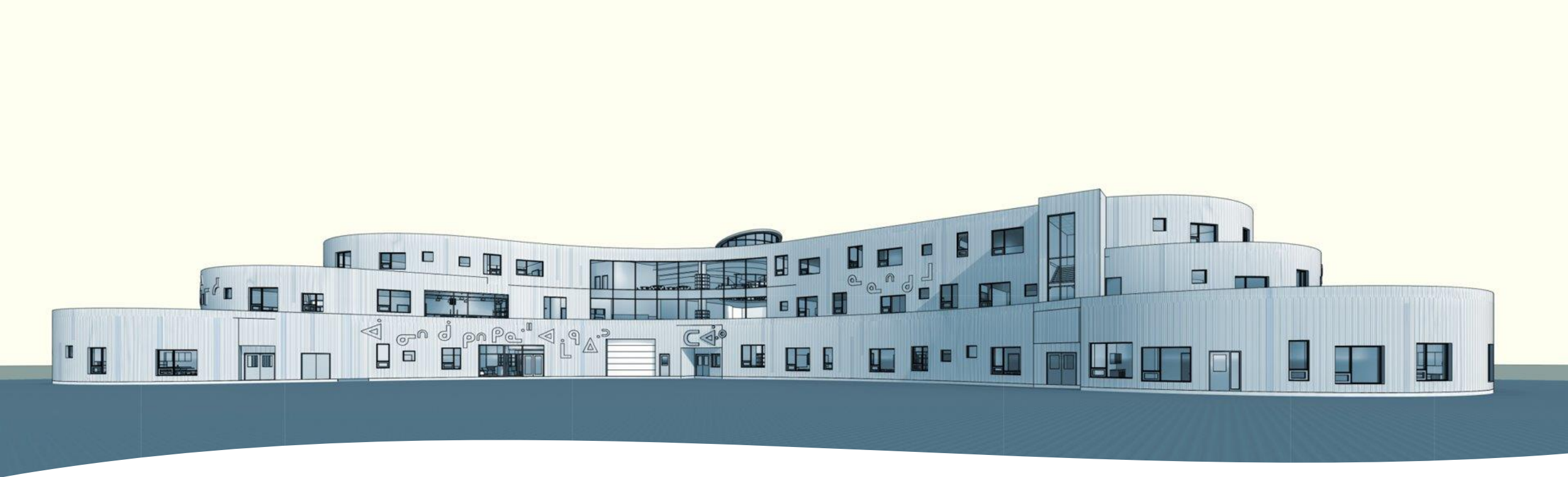
- St. Frances Cree Bilingual School has been delivering Cree language bilingual education in collaboration with Saskatoon Tribal Council since 2005.
- St. Frances Cree Bilingual School serves approximately 700 First Nations students from daycare to grade 9, making it the largest Indigenous language school in the world.
- Students reside in approximately 57 Saskatoon neighbourhoods and represent over 55 First Nations communities.
- The Parent Advisory Committee initiated an effective multi-year advocacy strategy to address chronic overcrowding and facility shortcomings.



Facility

- Elders, parents, students and stakeholders aspired to a facility that visually represented what the school stands for through representative metaphors such as the northern lights, syllabics, and curvilinear design features.
- Based on collaborative learning research and practice, grade-alike classrooms are configured in learning pods that promote teacher collaborative planning and instruction, and collaborative learning for students.
- The program plan drove the design of non-traditional supportive instructional spaces to support First Nations visual and performing arts, STEAM-field learning, First Nations traditional teachings, and botanical research and learning. Each of the concepts are supported by partnerships and research-based programming.





Facility Implications

Family Gathering Space; Community Kitchen

Student & Family and Wellness Clinic; Community Classroom

First Nations Visual Arts; First Nations Performing Arts

Indigenous STEAM Lab; Greenhouse Research Lab

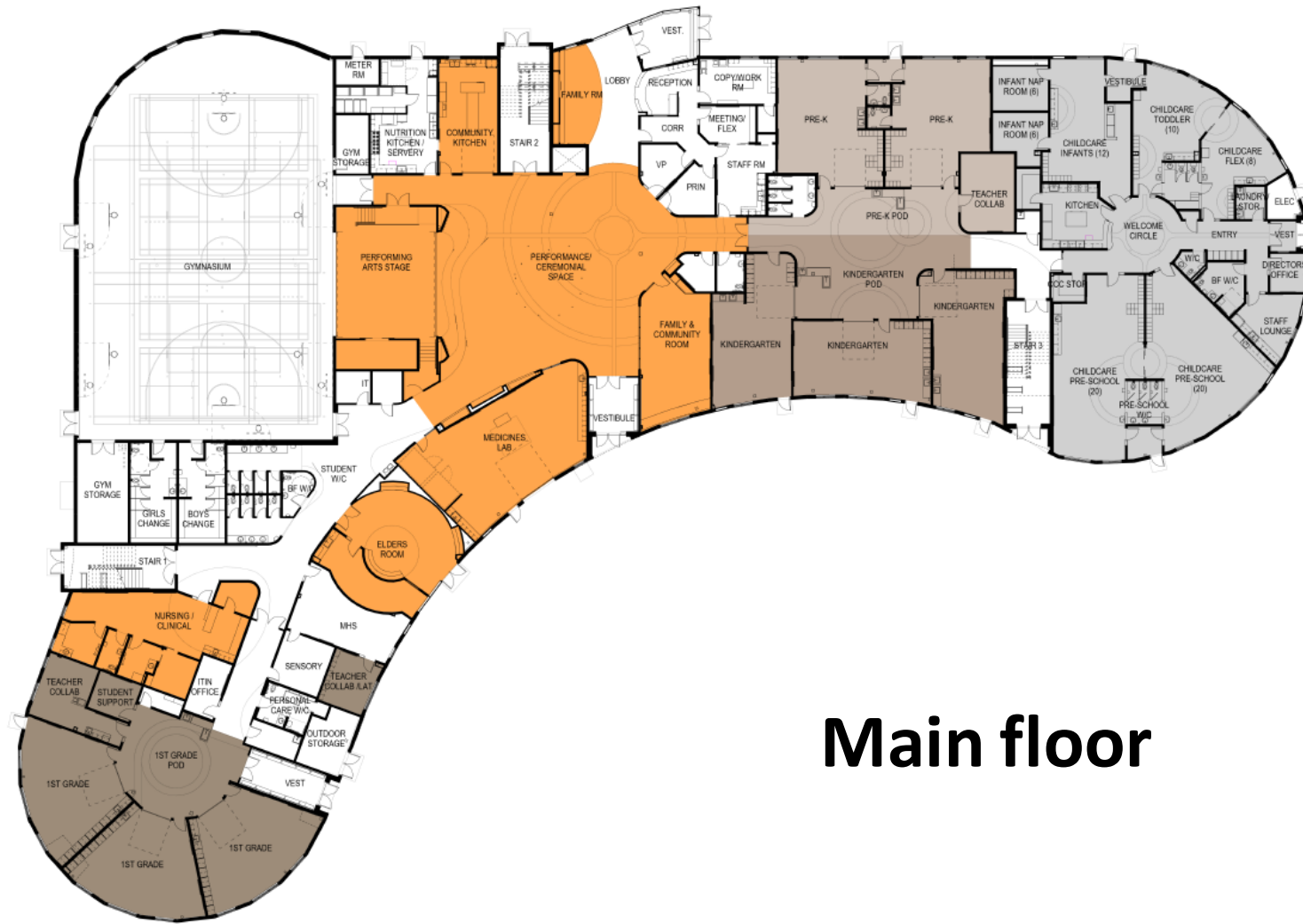
Elders' Teaching Space; Medicines Lab

A photograph of two traditional tipis standing in a misty, open landscape. The tipis are dark in color, and their smoke flaps are visible at the top. The background is hazy with some trees and shrubs. The word "Program" is overlaid in the top right corner in a large, orange, sans-serif font.

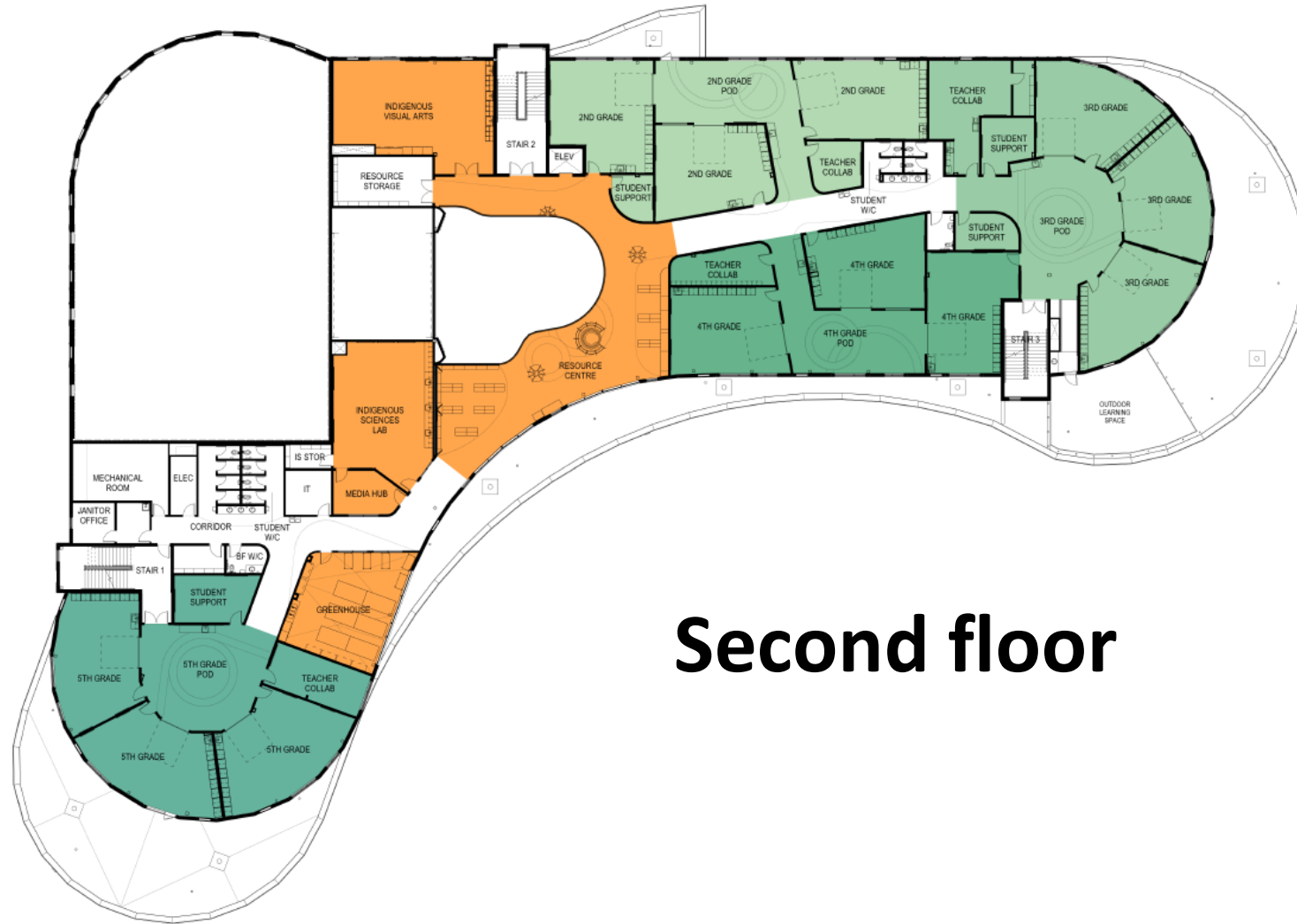
Program

The renewed program builds on existing priorities and partnerships and creates a world-class learning environment where children and youth achieve social and academic outcomes that advantage them for participation in society and the economy.

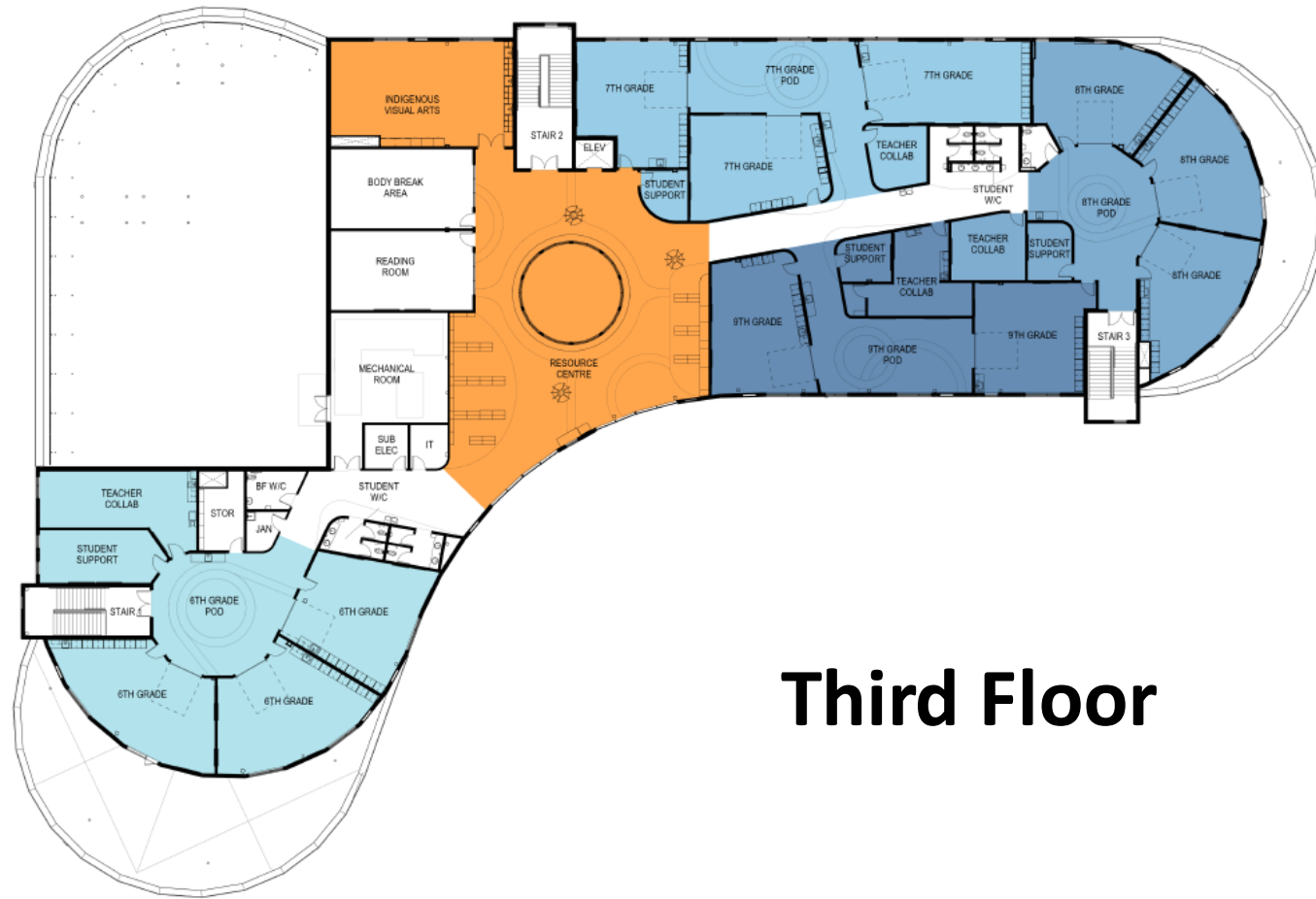
- **Land-based Learning:** Prioritizes learning from the land, rather than just on the land. All teachers collaborate with ITEP teacher candidates to plan and deliver land-based learning opportunities that align with curriculum and advantage First Nations Ways of Knowing.
- **Indigenous STEAM:** Highlights Indigenous technologies, modes of inquiry, perspectives on the environment, and human interactions with the environment. Indigenous STEAM celebrates multiple intelligences and diverse expressions of learning.
- **First Nations Student & Family Wellness:** A social pediatrics approach to mobilizing community to take ownership of child and family health outcomes. The First Nations Student and Family Wellness Centre will collaborate with a variety of wellness service providers to address access disparities.
- **Learning in Community:** Inspired and navigated by Elders' perspectives on learning, teachers plan and engage students based on interests and ability, and students engage in collaborative learning through problem-based, inquiry, and critical Indigenous learning paradigms.



Main floor



Second floor



Third Floor



Elder Leadership

Exterior



SHAPE



COLOUR



NEHIYAW
LANGUAGE

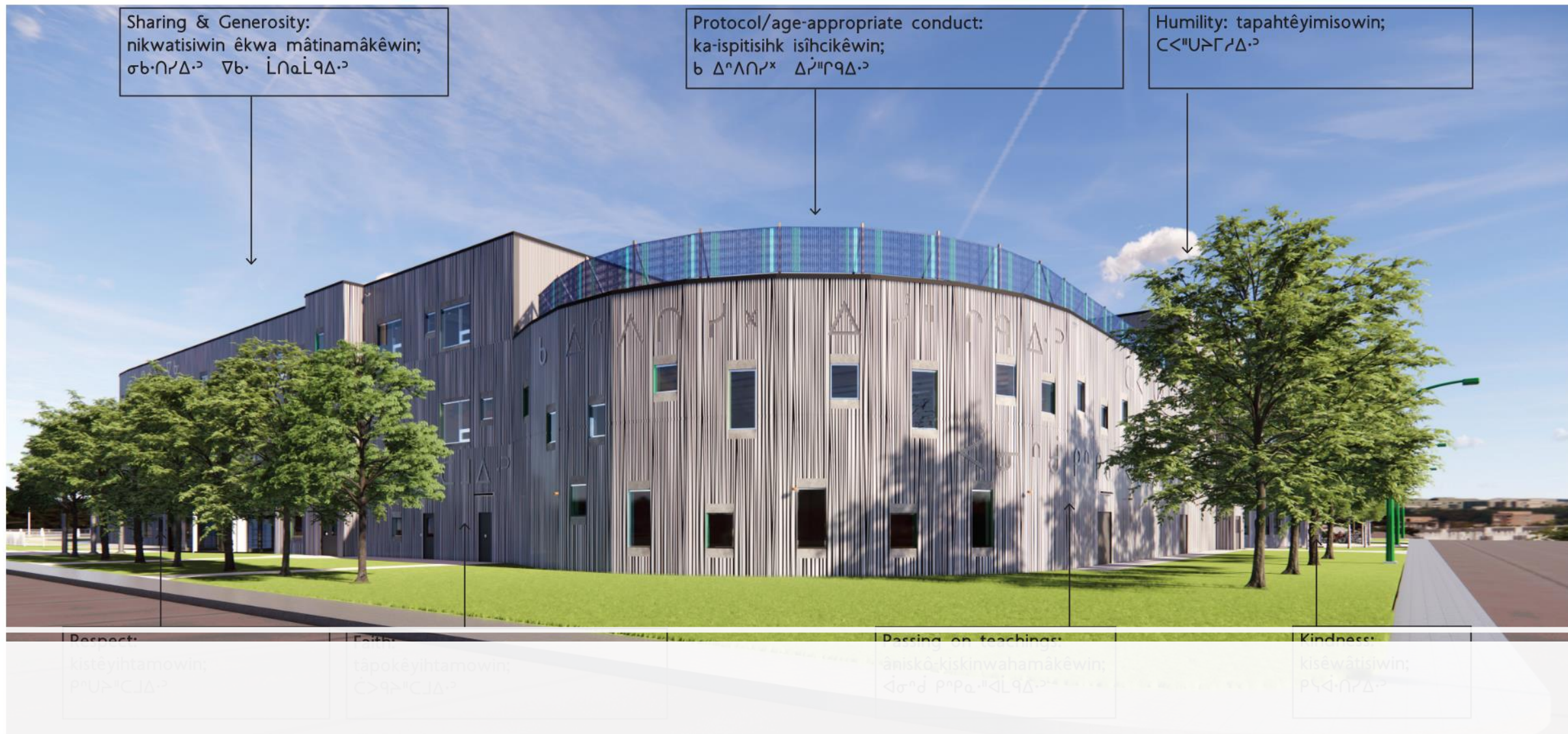


DIRECTIONAL
DOORS



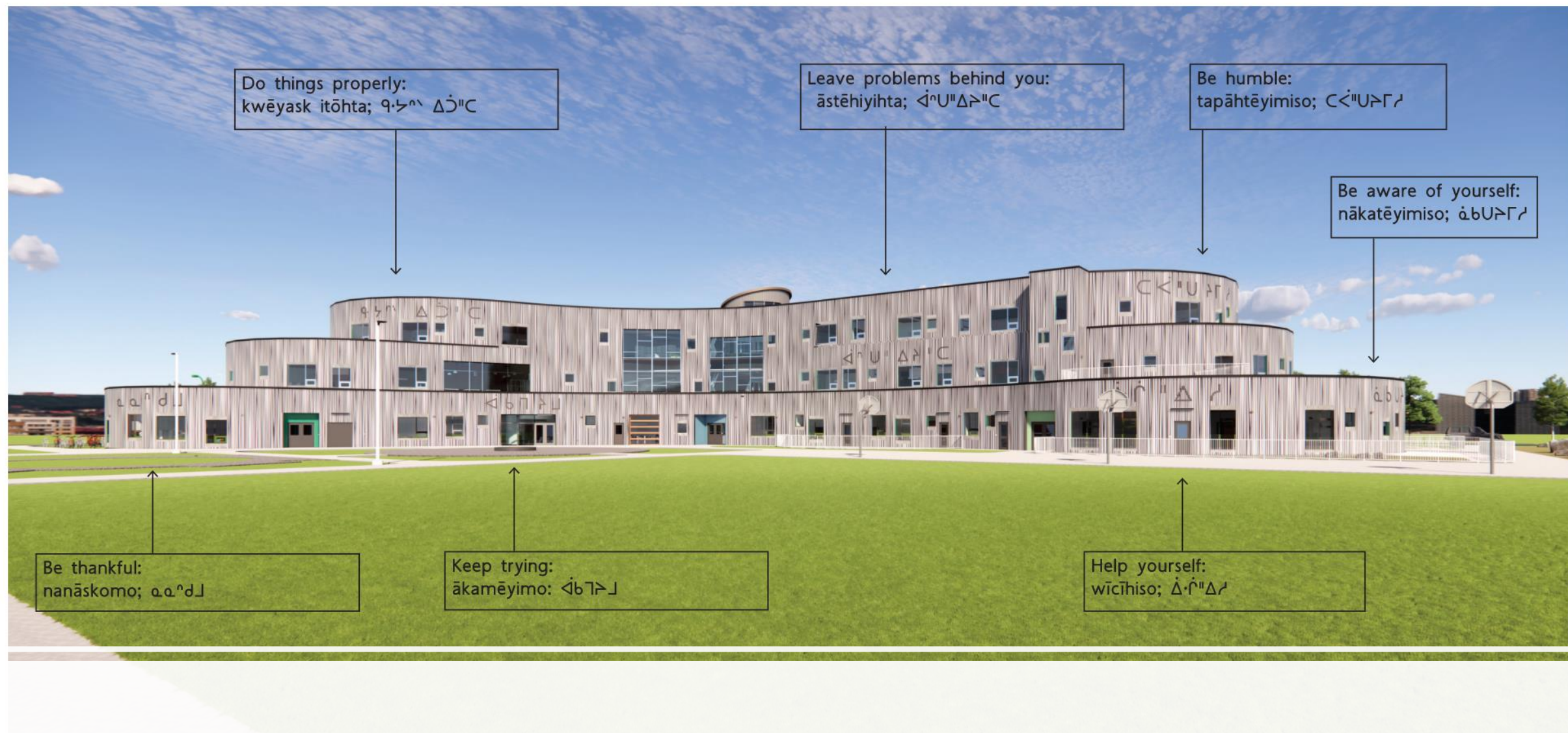


- 1 2 3 4 5 6 7 8 9 10 11 12 13 14 15 16 17 18 19 20 21 22 23 24 25 26 27 28 29 30 31 32 33 34 35 36 37 38 39 40 41 42 43 44 45 46 47 48 49 50 51 52 53 54 55 56 57 58 59 60 61 62 63 64 65 66 67 68 69 70 71 72 73 74 75 76 77 78 79 80 81 82 83 84 85 86 87 88 89 90 91 92 93 94 95 96 97 98 99 100 101 102 103 104 105 106 107 108 109 110 111 112 113 114 115 116 117 118 119 120 121 122 123 124 125 126 127 128 129 130 131 132 133 134 135 136 137 138 139 140 141 142 143 144 145 146 147 148 149 150 151 152 153 154 155 156 157 158 159 160 161 162 163 164 165 166 167 168 169 170 171 172 173 174 175 176 177 178 179 180 181 182 183 184 185 186 187 188 189 190 191 192 193 194 195 196 197 198 199 200 201 202 203 204 205 206 207 208 209 210 211 212 213 214 215 216 217 218 219 220 221 222 223 224 225 226 227 228 229 230 231 232 233 234 235 236 237 238 239 240 241 242 243 244 245 246 247 248 249 250 251 252 253 254 255 256 257 258 259 260 261 262 263 264 265 266 267 268 269 270 271 272 273 274 275 276 277 278 279 280 281 282 283 284 285 286 287 288 289 290 291 292 293 294 295 296 297 298 299 300 301 302 303 304 305 306 307 308 309 310 311 312 313 314 315 316 317 318 319 320 321 322 323 324 325 326 327 328 329 330 331 332 333 334 335 336 337 338 339 340 341 342 343 344 345 346 347 348 349 350 351 352 353 354 355 356 357 358 359 360 361 362 363 364 365 366 367 368 369 370 371 372 373 374 375 376 377 378 379 380 381 382 383 384 385 386 387 388 389 390 391 392 393 394 395 396 397 398 399 400 401 402 403 404 405 406 407 408 409 410 411 412 413 414 415 416 417 418 419 420 421 422 423 424 425 426 427 428 429 430 431 432 433 434 435 436 437 438 439 440 441 442 443 444 445 446 447 448 449 450 451 452 453 454 455 456 457 458 459 460 461 462 463 464 465 466 467 468 469 470 471 472 473 474 475 476 477 478 479 480 481 482 483 484 485 486 487 488 489 490 491 492 493 494 495 496 497 498 499 500 501 502 503 504 505 506 507 508 509 510 511 512 513 514 515 516 517 518 519 520 521 522 523 524 525 526 527 528 529 530 531 532 533 534 535 536 537 538 539 540 541 542 543 544 545 546 547 548 549 550 551 552 553 554 555 556 557 558 559 560 561 562 563 564 565 566 567 568 569 570 571 572 573 574 575 576 577 578 579 580 581 582 583 584 585 586 587 588 589 590 591 592 593 594 595 596 597 598 599 600 601 602 603 604 605 606 607 608 609 610 611 612 613 614 615 616 617 618 619 620 621 622 623 624 625 626 627 628 629 630 631 632 633 634 635 636 637 638 639 640 641 642 643 644 645 646 647 648 649 650 651 652 653 654 655 656 657 658 659 660 661 662 663 664 665 666 667 668 669 670 671 672 673 674 675 676 677 678 679 680 681 682 683 684 685 686 687 688 689 690 691 692 693 694 695 696 697 698 699 700 701 702 703 704 705 706 707 708 709 710 711 712 713 714 715 716 717 718 719 720 721 722 723 724 725 726 727 728 729 730 731 732 733 734 735 736 737 738 739 740 741 742 743 744 745 746 747 748 749 750 751 752 753 754 755 756 757 758 759 760 761 762 763 764 765 766 767 768 769 770 771 772 773 774 775 776 777 778 779 780 781 782 783 784 785 786 787 788 789 790 791 792 793 794 795 796 797 798 799 800 801 802 803 804 805 806 807 808 809 810 811 812 813 814 815 816 817 818 819 820 821 822 823 824 825 826 827 828 829 830 831 832 833 834 835 836 837 838 839 840 841 842 843 844 845 846 847 848 849 850 851 852 853 854 855 856 857 858 859 860 861 862 863 864 865 866 867 868 869 870 871 872 873 874 875 876 877 878 879 880 881 882 883 884 885 886 887 888 889 890 891 892 893 894 895 896 897 898 899 900 901 902 903 904 905 906 907 908 909 910 911 912 913 914 915 916 917 918 919 920 921 922 923 924 925 926 927 928 929 930 931 932 933 934 935 936 937 938 939 940 941 942 943 944 945 946 947 948 949 950 951 952 953 954 955 956 957 958 959 960 961 962 963 964 965 966 967 968 969 970 971 972 973 974 975 976 977 978 979 980 981 982 983 984 985 986 987 988 989 990 991 992 993 994 995 996 997 998 999 1000 1001 1002 1003 1004 1005 1006 1007 1008 1009 1010 1011 1012 1013 1014 1015 1016 1017 1018 1019 1020 1021 1022 1023 1024 1025 1026 1027 1028 1029 1030 1031 1032 1033 1034 1035 1036 1037 1038 1039 1040 1



- Learn new ways: ōskitēyīta; ōskitēyīta
- Be thankful: nanāskomo; ȧȧʔdʔ

- Be aware of yourself: nākatēyimiso; ȧbUʔɣʔ



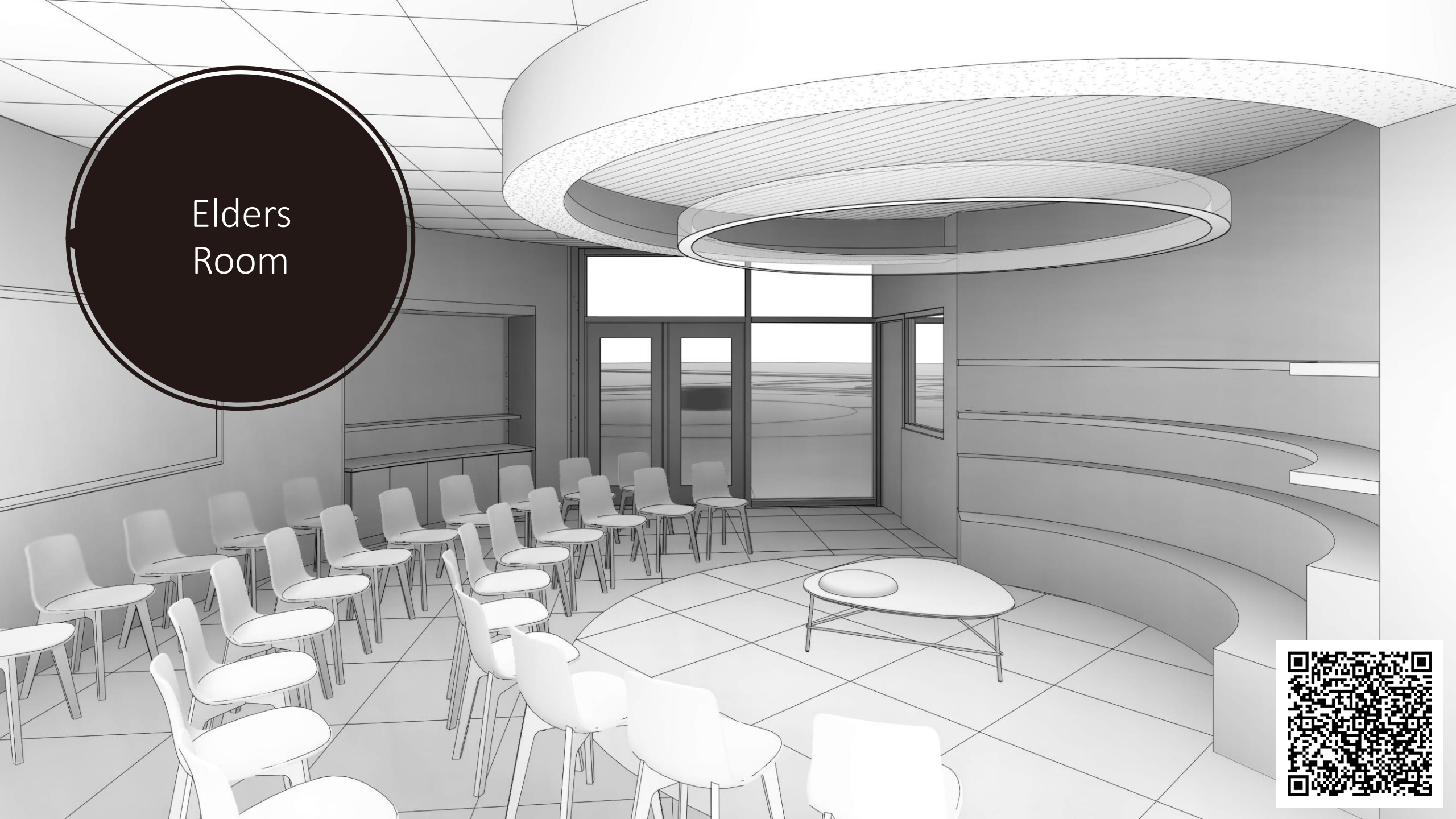




Welcoming Area



Elders Room





- **mamatāwi-maskīkiya -
Research Greenhouse**



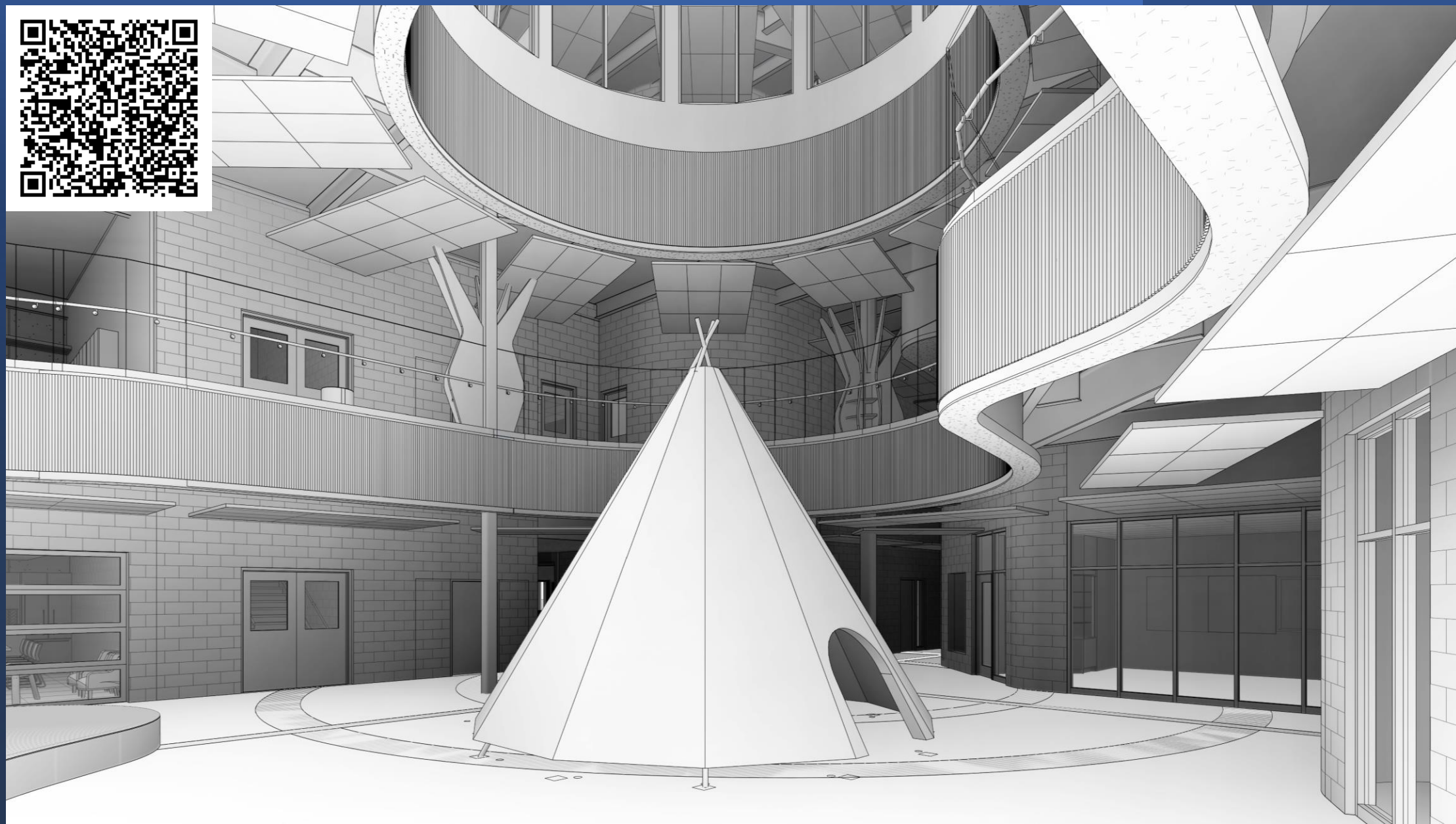
Learning Community

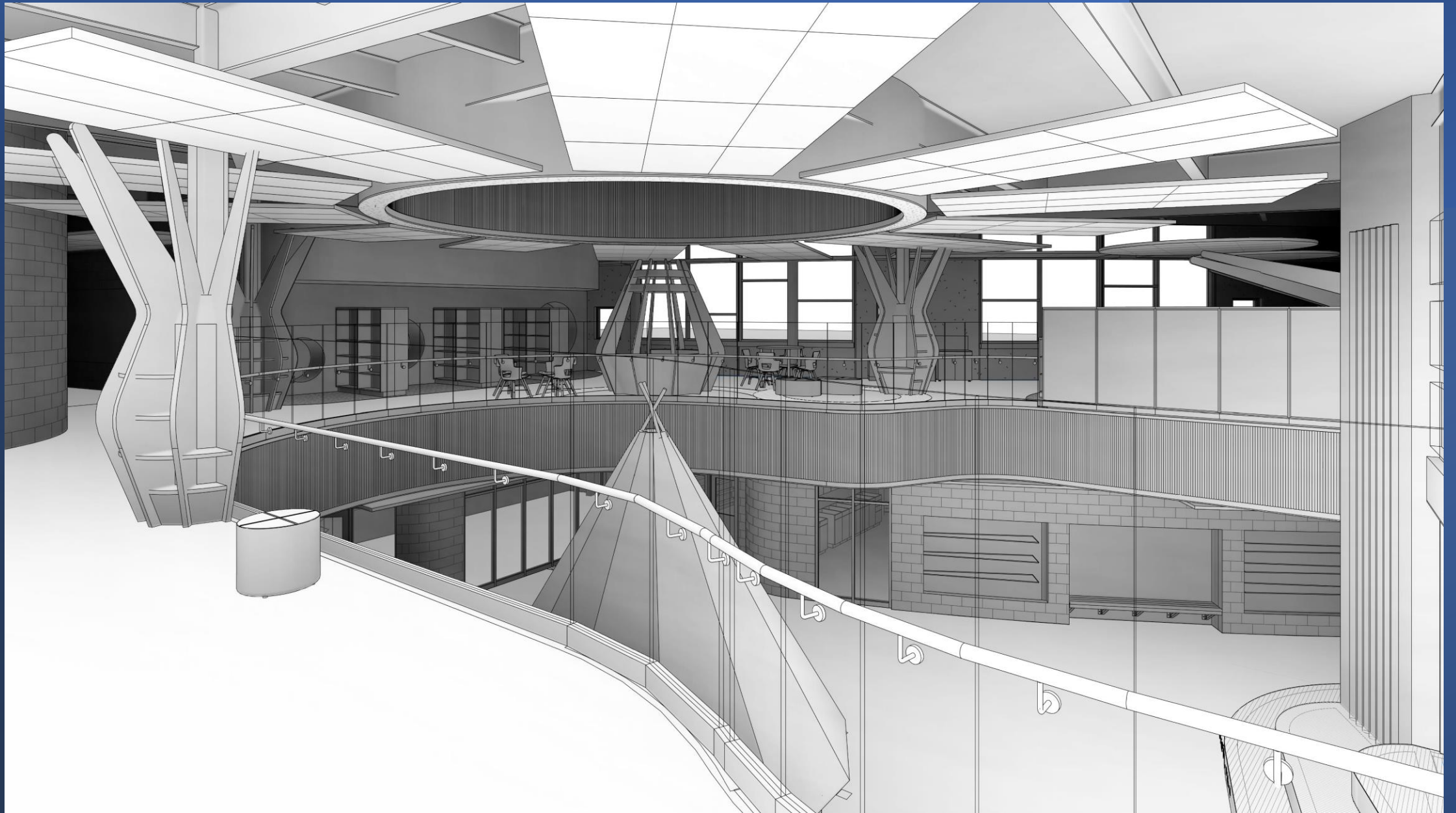




An architectural line drawing of a large, modern interior space designed for ceremonies and performances. The room features a semi-circular stage at the far end, flanked by two tall, slender columns. The stage has a curved front edge with Hebrew text inscribed on it. The audience seating consists of rows of chairs arranged in a semi-circle facing the stage. The ceiling is composed of large, rectangular panels, some of which are recessed. On the left and right sides, there are balconies with railings, suggesting additional seating or viewing areas. The walls are made of stone or brick, and there are large windows on the right side. The overall design is clean and functional, with a focus on creating a large, open space for communal activities.

Ceremonial & Performance Space





Medicines Lab

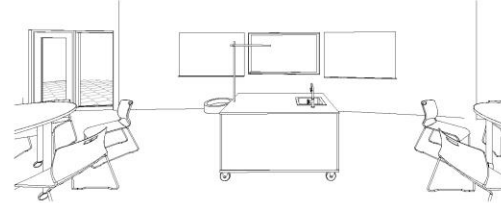
- **Function:** The Medicines Lab is a term coined by our Elders Committee early in the school design process. They aspired to have a dedicated facility that would facilitate teachings inherent in plant and animal medicines. Activities that are familiar at St. Frances include tanning hides, processing fish and small game, cleaning medicines such as sage, masking birch bark or willow baskets, or engaging in quill or fish-scale art.
- **Partnerships:** The Medicines Lab, as a component of the Indigenous STEAM Concept, relies on partnership with First Nations communities, various University of Saskatchewan programs and colleges, and Indigenous community organizations.



Medicines Lab - Finishes, Furniture & Equipment



ISOMETRIC VIEW - TEACHING WALL



ISOMETRIC VIEW - TEACHING PODIUM



POLISHED & SEALED CONCRETE
OR EPOXY FLOOR COATING



GAME HOIST ON
CEILING TRACK



CHEMICAL RESISTANT
TABLES



FRP WALL PROTECTION PANELS



INSPIRATION



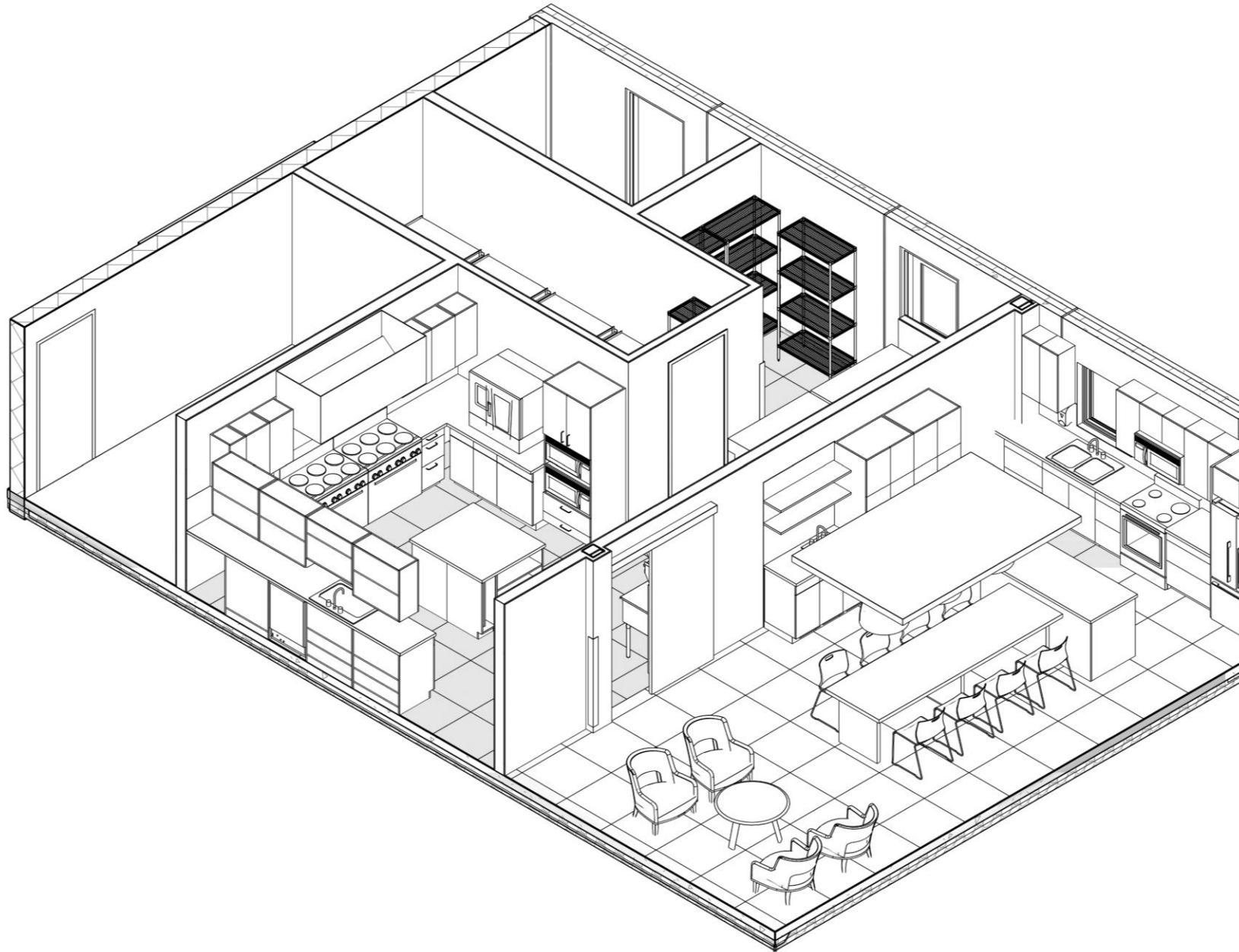
WALK-IN COOLER &
FREEZER



STEEL LAB STORAGE WITH
STAINLESS OR CHEM-RESISTANT
COUNTERTOPS

Specialized Program Areas
St. Frances Cree Bilingual School





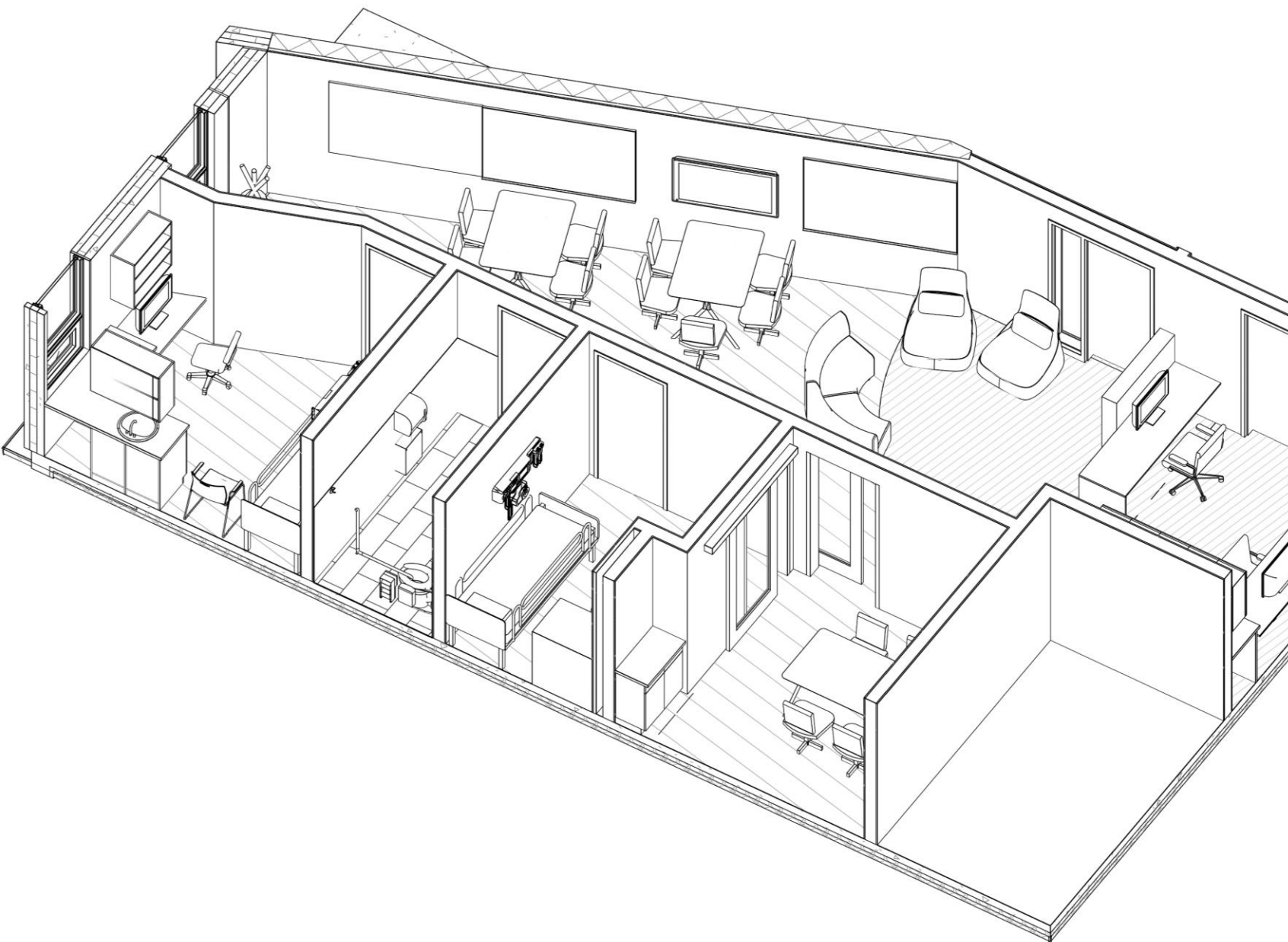
- māskīkiwi-mīcōwin - Kitchen (smaller, community kitchen)
- kā asamikiwisiwak kicawāsimisinawak (our children will be fed) Student Nutrition kitchen

Student Nutrition kitchen view 1



Student Nutrition Kitchen view 2





Bruno & Judile Martell First Nations Child and Family Wellness Centre

- Clinic space, examination rooms, family seating area and teaching area.



Summary

The vision for St. Frances Cree Bilingual School to serve as a catalyst to realizing First Nations community aspirations, and to serve as an incubation site for research and innovations is being realized. The best pathway to wellness and liberation is through ways known to First Nations people through ancient wisdoms and contemporary adaptability.