



# ROTARY'S FOUR-WAY TEST

Of the things we think, say or do...

**1. Is it the TRUTH?**

**2. Is it FAIR to all concerned?**

**3. Will it build GOODWILL and BETTER FRIENDSHIPS?**

**4. Will it be BENEFICIAL to all concerned?**



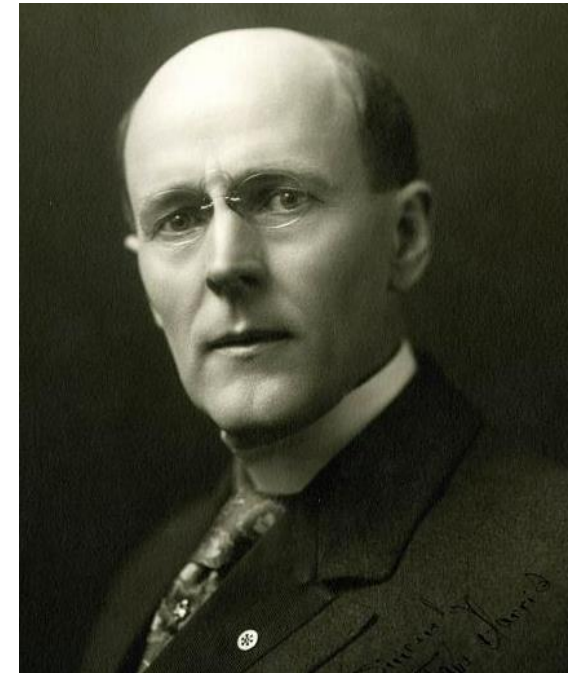
“Whatever Rotary may mean to us, to the world will be known by the results it achieves.”

**Paul Harris**

Rotary founder

How do we achieve things?

It has been said, “Rotary would not exist without the Foundation”.





# ROTARY'S 3 PARTS

- **CLUBS**
- **ROTARY INTERNATIONAL**
- **THE ROTARY FOUNDATION**

The  
**Rotary**  
Foundation



## **TRF** - A BRIEF OVERVIEW

Education or refresher?

# We talk about two foundations.

Both are 501(c)3 organizations.



**WRF, New - 1980**



**TRF, Old - 1917**



## **GROWTH**

**It has grown from an initial contribution in 1917 of \$26.50 from the Rotary Club of Kansas City, Missouri, to more than \$4.4 billion dollars in total contributions.**



**TRF enjoys a 4-star rating, their highest....**  
**...92% (or more) of funds raised go to program awards and operations.**  
**...top 1%, 14 straight years**



**Plus all related labor is from volunteers.**



## **Donations go to one of 3 Funds (buckets)**

- **Annual Fund**
- **PolioPlus Fund**
- **Permanent Fund**



# Paul Harris Fellow (PHF) Recognition



**Paul Harris Fellows are persons who donate \$1,000 to TRF\* OR, accumulate 1000 Foundation Transfer Points, or a combination (Lifetime). They wear this lapel pin.**



**Each \$ donated earns 1 transfer point to give away.**

\* Annual Fund or PolioPlus



**How can you earn EXTRA points?**



**TRF Transfer Points are being offered by some of our members as incentive matching (bonus) points to help you become a Paul Harris Fellow or move up.**

**Susan, Chuck,  
& Judy, 3 of many.**



**See the Appleseed for details.**



## **Some terms you will hear about giving to TRF.**

- **Sustaining Member : One donating \$100 each calendar year.**
- **EREY, Every Rotarian Every Year : \$25 in the Rotary year (to the Annual Fund)**

**EREY - An initiative which encourages all members to donate any amount to the Annual Fund.**

### **EREY Club –**

- **Each member giving \$25 minimum, and .....**
- **Total club donation averages \$100/member.**



## COMMITTEE GOALS THIS YEAR

- **Become an EREY Club this year**  
(every member donates \$25 minimum)
- **Exceed President Gary's total giving goal by 50%**
- **Minimum of 10 members move up one level in PHF recognition**

There are many ways to donate. See Appleseed.

Next time – Polio update.

# ANOTHER OPPORTUNITY





## **HOW DID THE ROTARY FOUNDATION GET STARTED?**

**The Rotary Foundation (TRF) started by Rotary International in 1917 when Rotary International's sixth president, Arch C. Klumph, suggested an endowment fund for Rotary "to do good in the world." It was officially named in 1928.**



## **TRF MISSION**

**TRF helps Rotary members to advance world understanding, goodwill, and peace by improving health, providing quality education, improving the environment, and alleviating poverty.**

**See short article in July Rotary magazine, p.53.**