



Wenatchee AppleSeed

August 4, 2016

Meeting at Noon on Thursdays at the Red Lion Hotel

Volume LXVI - No. 5

"District Governor Visitation"

With DG, Vern Nielsen

Vern was born in Dawson Creek, BC and grew up in Alberta receiving his Bachelor of Commerce from University of Calgary and did graduate studies at University of British Columbia. He has been a senior executive and entrepreneur in packaged goods, real estate, high tech and numerous other industries. His experience spans roles at General Foods to being CEO of multiple successful ventures. He was owner of one of the largest Food Brokerage businesses in western Canada and has done business in Canada, USA, Europe and Asia. Moving to Kelowna from New York where he was Executive Vice President of a segment leading packaged goods firm he became very involved in the Okanagan Technology community.

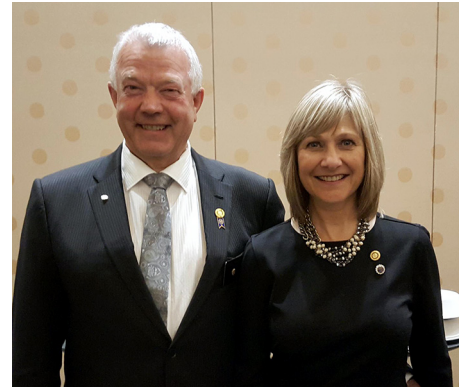
Vern has been a Director of several companies and not for profit organizations including Crime Stoppers, Okanagan Capital Fund, East Meets West Orphanage Foundation, Okanagan College Foundation.

He has won numerous awards for his involvement in both business and not for profit organizations including "Okanagan Science and Technology Community Leadership Award 2009", and the Fred Macklin Memorial award "Kelowna's Man of the Year 2010".

During his years in Rotary he has served on several committees and projects including; Rotary Pro-Am Golf tournament, Pleasantvale Homes Society, KSS Young Parents Center, founder of Rotary Ski to Tee and Rotary/Snowbirds Air Show, and writes a monthly Rotary column for local newspaper.

Vern visited several Rotary projects in India during his 2007 Rotary trip and including the Amreli Dam project. In 2010-11 he was President of the Rotary Club of Kelowna and received a Rotary International Significant Achievement Award. He has been the District Friendship Chair for two years and Assistant Governor in Area 4 for two years. In 2013 he received the Rotary International Avenues of Service Citation.

He is an RLI instructor, a Visioning facilitator, a multiple Paul Harris Fellow and a Bequest Society member of the Club Foundation. Vern is an avid skier, boater, motorcycle enthusiast, hiker, and golfer who has three adult children and a brand-new first grand-daughter!



SAVE THE DATE:

WestSide High School Work Party - 12:00 - 4:00 pm on August 5, 2016: Come join in the fun as we clear out remaining red rock, weeds, and clutter from the main entrance to prep for grass. We will also be laying some weed barrier and river rock around the Rotary sponsored monument sign. We will celebrate the fruits of our labor at 4:00 at Badger Mtn. Brewery! Please bring rakes, shovels, hammers, gloves, and plastic tubs and garbage bags for weeds and rock removal. Hats and sunscreen are a must as well. Thank you!

August is Rotary Membership & Extension Month

Did you know?

The Eisenhower interstate system requires that one mile in every five must be straight. These straight sections are usable as airstrips in times of war or other emergencies.

Each of the suits on a deck of cards represents the four major pillars of the economy in the middle ages: heart represented the Church, spades represented the military, clubs represented agriculture, and diamonds represented the merchant class.

Women are 37% more likely to go to a psychiatrist than men are. That's because men drive them crazy.

On average, there are 178 sesame seeds on each McDonalds BigMac bun.





509-662-5187

Ad sponsored by Rotarian Jay Smith

www.expresspros.com/wenatcheeewa

Alpine Aire Heating & Cooling, Inc.

509-662-6846

Heat and Air... Call Alpine Aire!

1306 Walnut • Wenatchee, WA 98801

MOSS ADAMS LLP

Certified Public Accountants | Business Consultants

(509) 834-2404 www.mossadams.com

123 Ohme Garden Road, Suite C • Wenatchee, WA 98801



662-2114

www.eagletransfer.net

YOUR UNITED VAN LINES AGENT

The Week in Review –

Today we discovered that after 14 years the Airport runway extension is now open and available for use. (Our government at work). Of course everyone is happy that it is finally done. Official opening was last Monday but they had an emergency landing on it on Sunday. They completed runway is now 7,000 feet in length which enables larger planes to land with bigger capacities. The cost of this expansion was only \$30 million dollars, with 90% paid by the federal government and the balance by our local Port Districts. There was a lot of coordination that had to be done between various government agencies for utilities, roads, and other services, but it all finally came together. Trent open his presentation up to questions and we discovered that \$4.50 of every ticket sold goes back to the airport for equipment and improvements. They recently used \$700,000 from that fund to purchase a new fire and rescue vehicle to have available in case of any accident at the airport. Rescue crews have to be available for 15 minutes before an aircraft lands and for at least 15 minutes after take-off. When no planes are using the airport it is available to help out locally with other emergencies or wildfires. All in all it was a great update on what has been going on at the airport. Thanks Trent for a great presentation.

Richard DeRock made a plea for host families for incoming exchange students. The first student is from Thailand and is arriving August 16th. He will be staying with the DeRocks through November but needs host for December to February, March to May and then June to August 2017.

WENATCHEE ROTARY CALENDAR

August 11 Meeting

Our Valley - What's Next? - Mike Walker

August 18 Meeting - 4:30 pm @ Red Lion

Classification Talks - Frank Clifton

August 25 Meeting

Adventure in Tourism - Devon Anderson

September 1 Meeting

Make a Difference Day - Laurel Helton

January 28 2017

Rotary Building Communities Auction 2017

April 27 - 30, 2017

District Conference, Kelowna, B.C.

June 10 - 14, 2017

Rotary International Convention, Atlanta, Georgia



**When you give to Rotary
You give to the World.**



CliftonLarsonAllen

517 North Mission, Suite B
Wenatchee, WA 98801
509-663-5622

www.cliftonlarsonallen.com

**STOCKS • BONDS • CDs
IRAs • MUTUAL FUNDS**

Dan Rodgers
Financial Advisor

237 N. Chelan Ave., Wenatchee, WA 98801
509-662-4491

WWW.EDWARDJONES.COM MEMBER SIPC

Edward Jones®
MAKING SENSE OF INVESTING



NOYD & NOYD
Insurance Agency, Inc.

500 N. Wenatchee Ave., Suite A
Wenatchee, WA
509-662-2194

www.noydins.com



Wenatchee Valley Humane Society

Celebrating 50 Years...

80,000 Adoptions & Counting!

509-662-9577 wenatcheehumane.org

LIFELINE
Ambulance, Inc. (509) 663-8091
Wenatchee – East Wenatchee – Omak – Oroville

INSIDE DESIGN
CARPET ONE FLOOR & HOME
2101 N. Duncan Dr. • Wenatchee, WA 98801
www.insidedesign1.com
662-9500

THE THAI
RESTAURANT & BAR
Voted Wenatchee's Best Asian Restaurant
Locally owned since 1991
1211 N. Mission • Wenatchee
662-8077

GA GELLATLY
AGENCY INC.
www.gellatly.com
662-2151
For full service insurance & bonds, look to us!

NEW 2016-17 ROSTERS NOW AVAILABLE

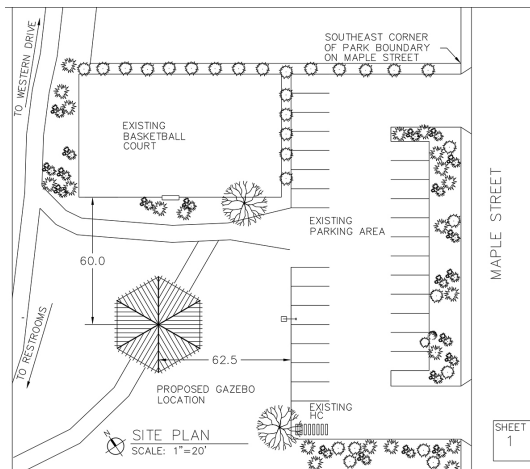
Our new rosters are now available! This past week we were able to distribute new inserts for your Rotary Roster. Hopefully, you were able to get yours this past week. Please take a moment to review your information and let me know any discrepancies so that we can fix them for the future. Also if your picture is missing it means that we do not have a picture of you. Please provide that now while it is on your mind. Don't take a chance on me coming up with a picture that I think looks like you when I need to put your picture in the Appleseed for Greeting, Cashiering, or for a classification talk. I will try to have them again at next week's meeting but after that you will need to stop by my office here at Ridgeline Graphics to pick one up. If you are incapacitated and would like one, just call me and I will deliver one to you. I appreciate those of you that updated your information prior to printing and those of you that didn't I am sorry it is wrong. I would especially like to thank all those who placed an ad in the roster. The ad proceeds go directly to the club to help offset the cost of the rosters. I would encourage everyone to please patronize those businesses that help support our club with their ads. Keep in mind that the layout of the roster is designed to allow you to add additional Rotary information and keep it all together. (Copies of club bylaws, committees, goals, etc.) Please send all corrections, photos, complaints, etc. to: johnc@wenatcheerotary.org

I have already had one correction, however it took her a couple of hours to discover it. Judy Conner's e-mail address is wrong in the roster. It should be: igconner@nwi.net

For those of you that might want to contact her by e-mail please be advised to make that change in your individual rosters. In the alternative, you may bring your roster back to me and I will make the change for you. I have since made the correction on my master print so that it can maybe be correct next year.

ROTARY PARK UPDATE - DONATION

Rotary Park is now just a little bit closer to being finished. We just received a nice bonus in the form of a gift totaling \$20,000. We received a grant from the Names Foundation in the amount of \$20,000 to go toward the second picnic shelter for Rotary Park. This grant, along with the money we have in the Park account and money from the upcoming auction, may allow us to get started on the shelter in 2017! We have almost \$40,000 in our park account with another \$10,000 due from our last auction. With this \$20,000 we will have almost \$70,000 towards an estimated cost of \$100,000 to \$120,000 construction cost. We will also be getting an additional \$10,000 from our upcoming auction and hope to raise most of the balance from the sale of brick pavers to be inlaid in the new pavilion floor. It is anticipated the pavers will be sold for \$100 each. The sale of 300 to 400 pavers should cover the balance of the construction cost. Of course we will need more picnic tables and benches for the new structure and hopefully we can get a few people to sponsor those like we did in the initial phase a little over 10 years ago.



Retirement & Assisted Living
663-3337
www.colonialvista.com



1660 North Wenatchee Ave.
www.jetproautowash.com
662-WASH



Cashmere Valley Bank
"The little Bank with the big circle of friends."

Cashmere | Cle Elum | Lake Chelan | Leavenworth | East Wenatchee | Ellensburg | Wenatchee | Yakima
www.CashmereValleyBank.com



820 North Chelan
Wenatchee
663-8711

www.wvmedical.com



The Wenatchee AppleSeed (UPS380610) is published weekly for \$2.00 per year by the Wenatchee Rotary Club, 30 North Chelan, Wenatchee, WA 98801. Periodicals Postage Paid at Wenatchee, WA.
POSTMASTER: Send address corrections to: Rotary Club of Wenatchee, P.O. Box 1723, Wenatchee, WA 98807-1723

Did you know that you can make up a meeting at the following places?

Wenatchee North	@ Town Toyota Center	Wed. Noon	East Wenatchee	@ Shari's Restaurant	Thurs. 7 am
Wenatchee Sunrise	@ Red Lion	Tues. 7 am	Lake Chelan	@ Tsillian Cellars	Tues. Noon
Cashmere	@ Cashmere Presbyterian Church	Wed. Noon	Quincy	@ Quincy Senior Center	Thur. Noon
Leavenworth	@ Kristall's	Fri. 11:45 am			

THE WENATCHEE ROTARY FOUNDATION

The mission of the Wenatchee Rotary Foundation is to improve educational opportunities for citizens living in the Greater Wenatchee area. Funding for the foundation is through immediate and deferred giving from current and past Wenatchee Rotary Club members.

Each club member in good standing is also a member of the Foundation.

Officers: Christina Davitt, President; Bill Monnette, Secretary, Heidi Myers, Treasurer

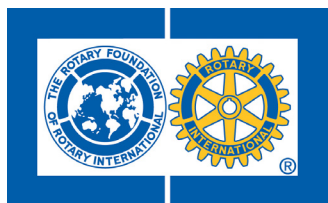
Board Members: Joe St. Jean, Ruth Esparza, Alice Meyer, George Buckner, Tom Ross, Don Myers

Rotary Ambassadors

This week's greeters will be



JERRY COPP



JIM CORCORAN

This week's Cashiers will be



BOB CULP



DEE CURCIO

*Greeters & Cashiers, please try to arrive by 11:30 a.m.
If you cannot be here please find your own replacement!*

THE WENATCHEE APPLESEED

IS PUBLISHED WEEKLY BY THE
ROTARY CLUB OF WENATCHEE, WASHINGTON.

IF YOU HAVE AN ITEM YOU WOULD LIKE TO
INCLUDE IN THE **APPLESEED**

CONTACT JOHN McDARMENT AT 662-6858
FAX: 663-8530

E-MAIL: APPLESEED@WENATCHEEROTARY.ORG

• OFFICERS 2016 - 2017 •

JIM RUSSELL	PRESIDENT
DON MYERS 2017/18	PRESIDENT ELECT
PETE VANWELL 2018/19	PRESIDENT NOMINEE

BILL MURRY	PAST PRESIDENT
FRANK CLIFTON	SECRETARY
CHRIS RUMBLES	TREASURER

• BOARD OF DIRECTORS •

SUSAN ALBERT - 17	PETE VAN WELL - 17
JILL LEONARD - 17	JAY SMITH - 18
ALICE MEYER - 18	MARIO CANTU - 18
CHRISTINA DAVITT - 19	MAYNARD MAN - 19
JOE ST. JEAN - 19	

THE BOARD MEETS AT 4:30 PM ON THE 2ND THURSDAY
OF EACH MONTH IN THE CADMAN ROOM @ RED LION HOTEL
NEXT BOARD MEETING THURSDAY, AUGUST 11, 2016

VISIT OUR WENATCHEE ROTARY WEBSITE AT:
WWW.WENATCHEEROTARY.ORG