

CHELAN~DOUGLAS



LAND TRUST

Our Land, Our Water, Our Future

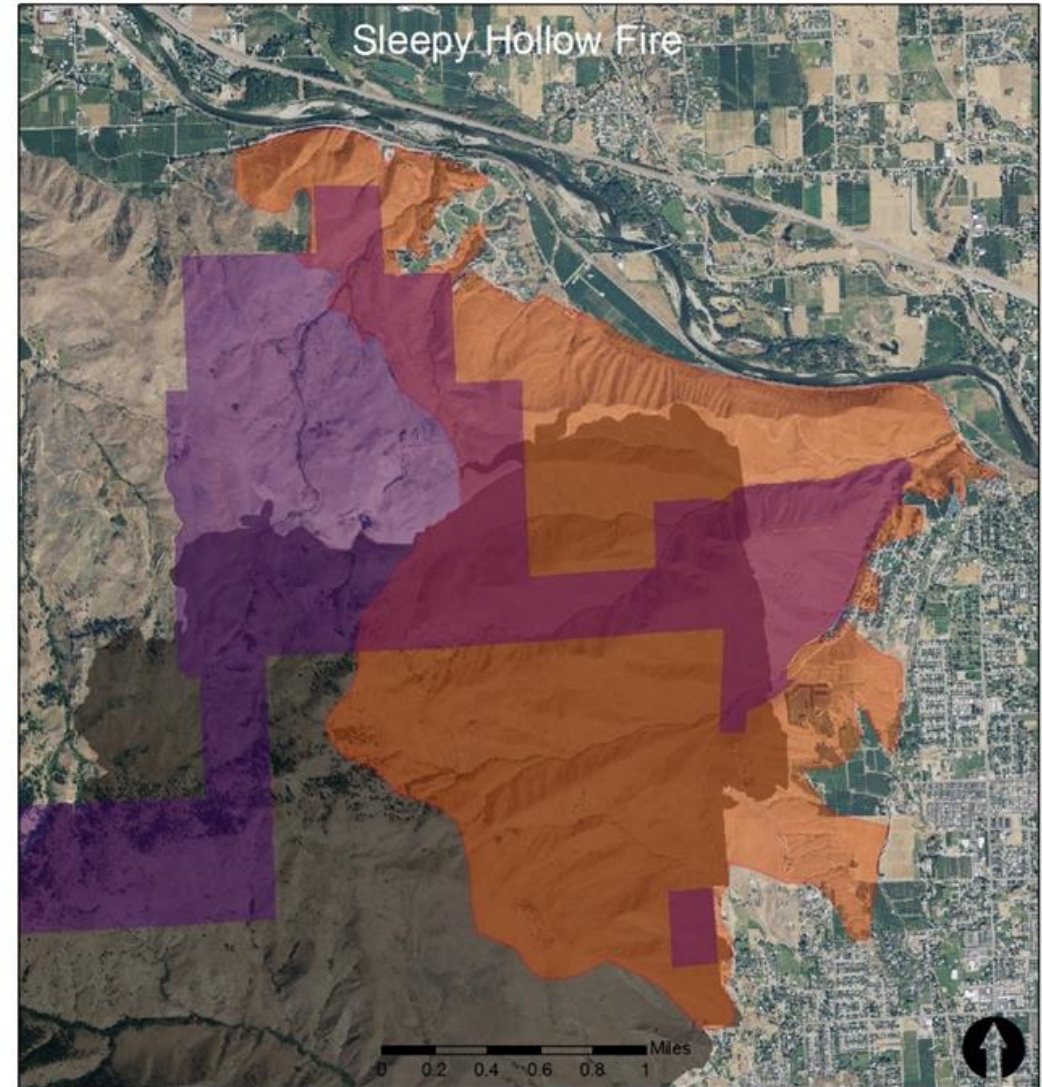
CJ O'Reilly, Development Director
Susan Ballinger, Conservation Fellow
Oct. 12, 2023 Wenatchee Rotary Club

- Oct. 14- Wildlife of Entiat River
- Oct. 18- Caring for Jacobson Trail 4:30-6pm
- Oct. 19-Planting Sumac Kenzie's Landing 10am-noon
- Oct. 21- Planting Sumac Sage Hills 9am-11am

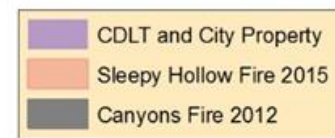


Wildfire 2012 and 2015 - loss of big sagebrush and antelope bitterbrush.

Nearest seed sources are a far away



1:30,000



Big Sagebrush



Antelope Bitterbrush

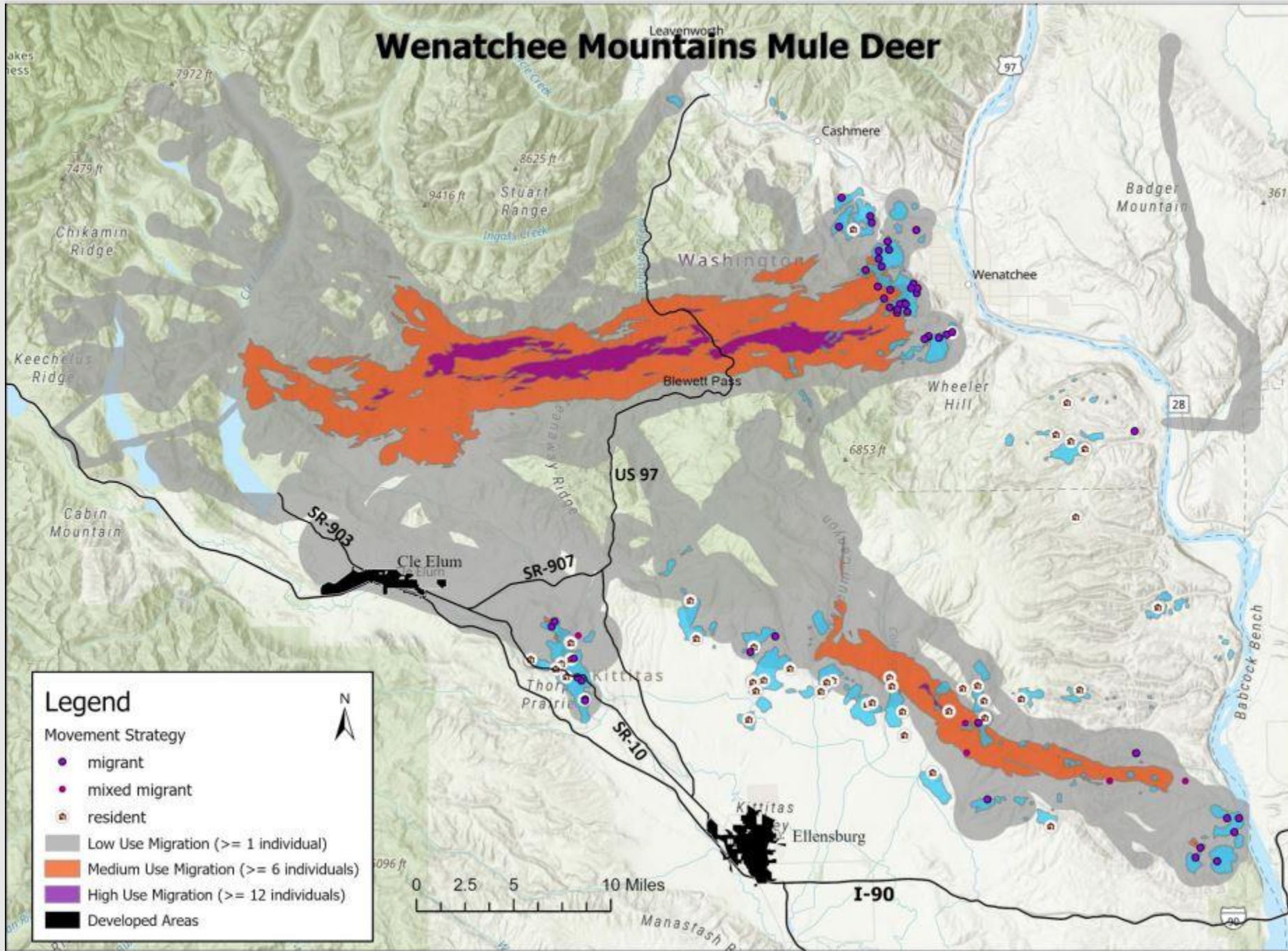


Why plant shrubs?

Mule deer winter in the foothills, and use these shrubs for food and hiding cover.



Wenatchee Mountains Mule Deer



Captures

2020-2022

121 AF

Movement Strategy

D7 ($n = 41$)

85% migratory

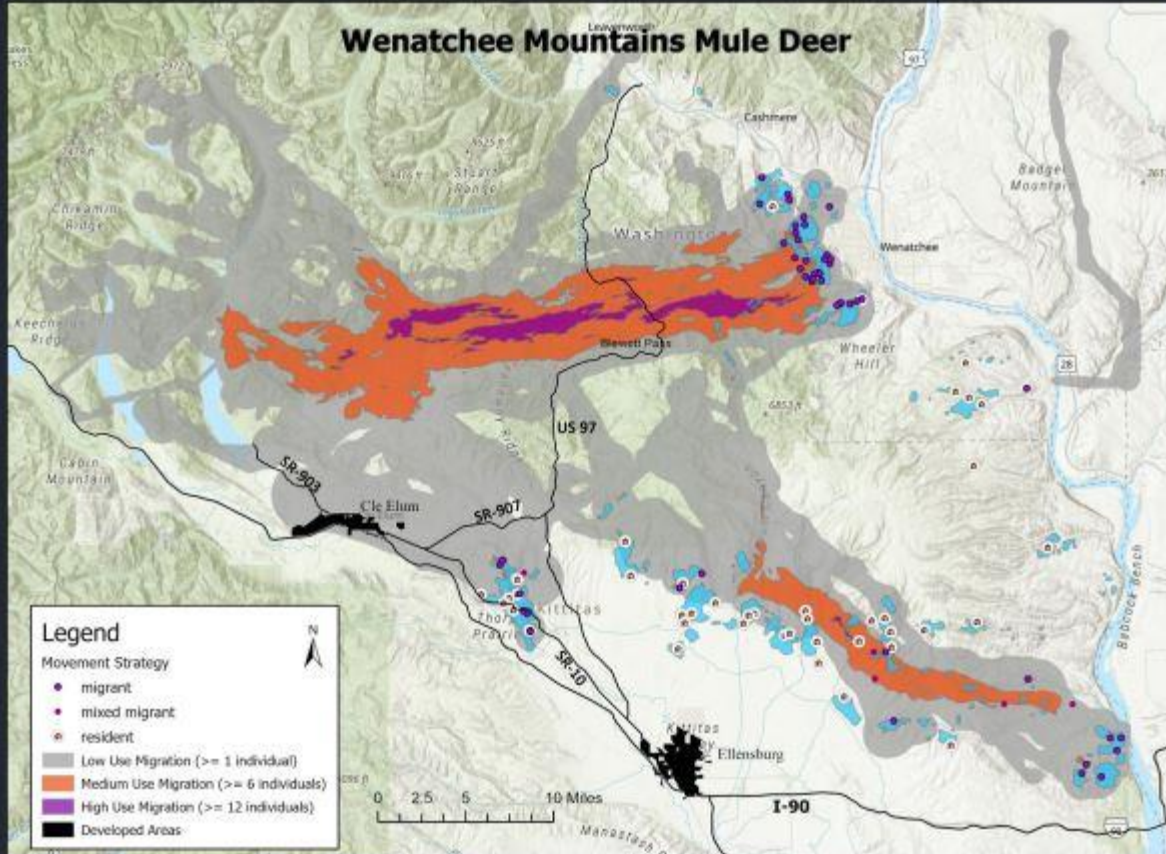
15% resident

D8 ($n = 65$)

37% migratory

63% resident

Wenatchee Mtns



Migration

Average distance: 44 miles (max 82 miles)

Spring

- Median start & end: April 29 to May 5
- Average days: 17

Fall

- Median start & end: Oct 27 to Nov 17
- Average days: 24

WHS Interact Club &
College Mentor Program
Wenatchee Foothills post-
wildfire restoration with
CDLT
2016-2023



On **Nov. 11, 2016**, our team successfully planted 215 perennial wildflowers in-between the 252 bitterbrush planted on Oct. 22, 2016 on the Balsamroot Trail





- Students divided into 9 planting teams.
- Showy penstemon and snow buckwheat were planted in groups of 3, placed 1-foot apart.
- Browse guards were secured using a bamboo stake.
- Students used their hands to tamp down the soil around the plant.





Interact Club Members in 2016-
Working as a team doing
meaningful work made for a
successfully community service
project.

Nov. 12, 2018- 20 Interact and College Mentor Program volunteers, each doing 2.5 hours of volunteering for Chelan-Douglas Land Trust's Jacobson Preserve Trailhead.





Students worked in small groups, preparing soil and planting 230 native grasses, shrubs, and wildflowers

Students worked together in teams in cold wintery conditions with positive attitudes and can-do spirits!



Nov. 11, 2019, 20 Wenatchee High Interact Club students planted 250 native pollinator species within 9 enclosures near trailhead



Warm temperatures and blue skies on Nov. 11, 2019,
at the future Kenzie's Landing Trailhead.



Big Sagebrush Planting on Nov. 11, 2021 In the Wenatchee Foothills



Nov. 11, 2021: Planted 230 big sagebrush near Kenzie's Landing (future city trailhead)

Partners:

Jeanne Dodds, *Endangered Species Coalition*

Ted Alway, *Derby Canyon Natives*

Elisa Lopez, *Team Naturaleza*

Allan Galbraith, *Downtown Rotary Club*

Jon Magnus, *Interact Club, Wenatchee High School*

Evelyn Mejia-Naranjo, *College Assistance Migrant Program, Wenatchee Valley College*

20 Interact Club students

10 Rotarians

3 Team Naturaleza

2 WVC CAMP students



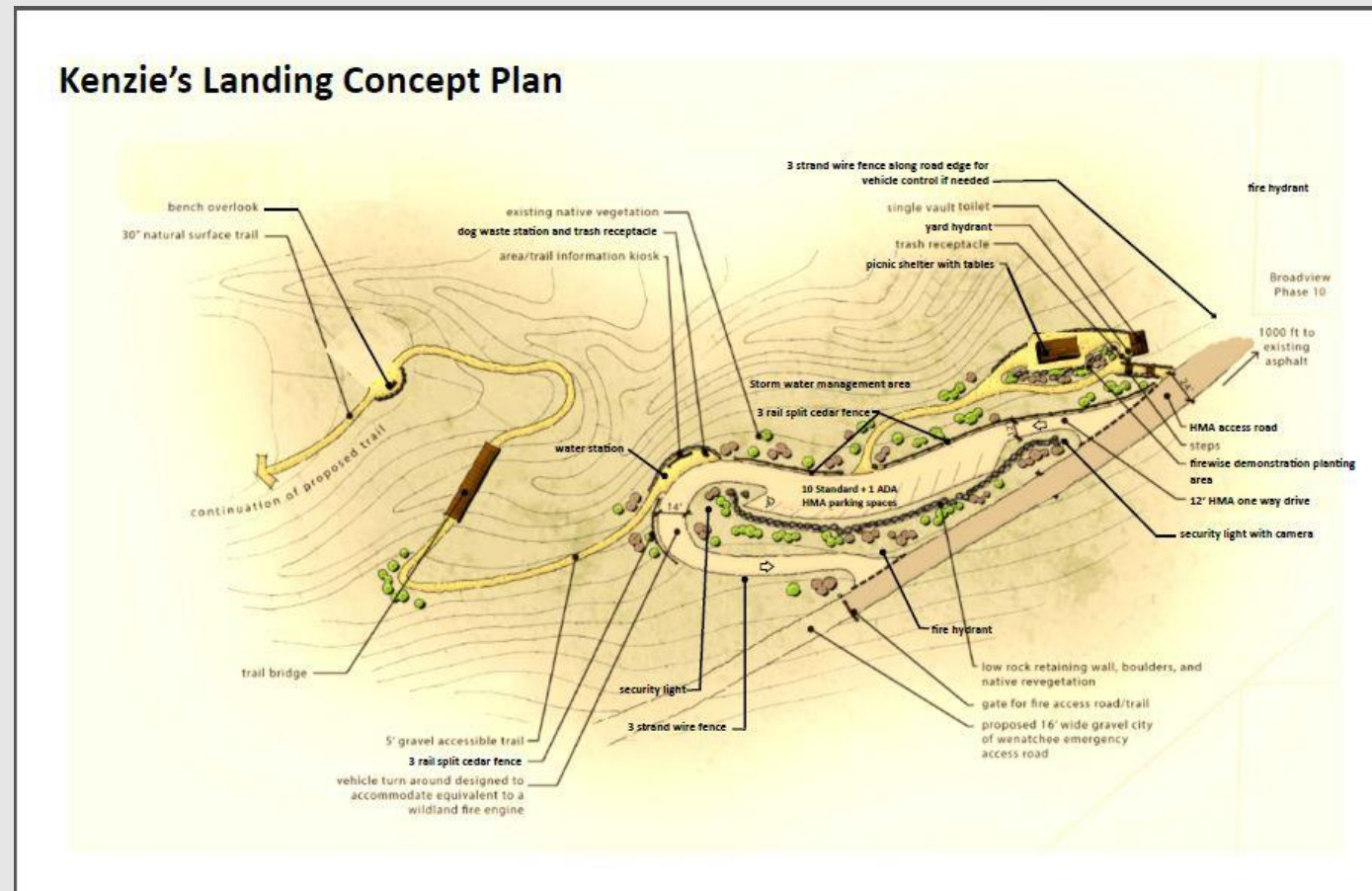
Nov. 11, 2021 Interact Club & Rotarians



December 2018- June 2022

The WHS Interact Club raised **\$22,099.06**
for the Kenzie's Landing trailhead project

Presented to Wenatchee City Council in July, 2022



***395 plants were tucked
into the
Ground at the new
Kenzie's Landing Trailhead
on Nov. 11, 2022***

CDLT & the City of Wenatchee thank our partners:

WHS Interact Club students & advisors

WHS AVID & Earth Club students & teachers

Wenatchee Rotary Club

Team Naturaleza

WSU Master Gardeners

SkillSource & WSU Extension

Wenatchee River Institute



Thank you to funding by Endangered Species Coalition.



Thank you, Rotarians!



Nov. 10, 2023

Annual Veteran's Day Project with WHS Interact Club

9-11:30 am at Kenzie's Landing Trailhead

Plant 300 Nursery-grown Native grasses within Trailhead





Make A Difference Day

WHAT / Volunteer Native Plant Restoration Party!

WHEN / Saturday, October 28th, 2023 - 9am-1pm

WHO / Everyone ages 11 to 111!

- ~Youth 6th-8th grade are welcome to come with a parent.
- ~9th-12th grade students welcome to attend on their own.
- ~Please, no children younger than 6th grade.

WHERE / Meet @ **Horse Lake Trailhead**

WHAT TO BRING / Re-usable Waterbottle, Cold Weather gear, Sturdy Shoes

Join CDLT staff as we plant 700 native grass seedlings in a former farm yard at Horse Lake Reserve. Planting holes will be pre-dug.

Afterwards help create a community chalk mural on the concrete slab where the old barn was. The mural will be outlined before the event, so come with your coloring skills!

CDLT will provide tools, gloves, hot drinks, & snacks.

Scan QR code to sign our liability release form online:
www.cdlandtrust.org/form/cdlt-event-volunteer-participant



VOLUNTEER NATIVE PLANT RESTORATION

AUTUMN PLANTING PARTIES

WHEN / Wednesday, October 18th 4:30-5:30pm

WHERE / Jacobson Preserve

WHAT / spreading mulch on trails

CDLT WILL PROVIDE:
TOOLS, NATIVE PLANTS
SNACKS & ON-SITE TRAINING

To find more information and **RSVP**, go to our website:
cdlandtrust.org/outings-events/events

WHEN / Thursday, October 19th 10am-Noon

WHERE / Kenzie's Landing Trailhead

WHAT / planting Smooth Sumac shrubs

WHEN / Friday, October 21st 9-11am

WHERE / Sage Hills Gateway

WHAT / planting Smooth Sumac & Rabbitbrush shrubs

WHEN / Tuesday, October 24th 10-11:30am

WHERE / Horse Lake Reserve

WHAT / pre-digging planting holes for Make a Difference Day

WHEN / Saturday, October 28th 9am-1pm

WHERE / Horse Lake Reserve

WHAT / planting native grasses for Make a Difference Day

WHEN / Monday, October 30th 10am-Noon

WHERE / Kenzie's Landing Trailhead

WHAT / pre-digging planting holes

WHEN / Wednesday, November 1st 9:30am-3pm

WHERE / Horse Lake Reserve - Glacierview area

WHAT / spreading native grass seed

RSVP / By noon the day before the event

