

# Wenatchee Rotary Park Peace Pole Plaza





## Peace Pole Plaza

- ▶ Part of the global Peace Pole Initiative.
- ▶ 250,000 sites around the world, including Chelan.
- ▶ Bring together peoples of all backgrounds, faiths, ethnicity.

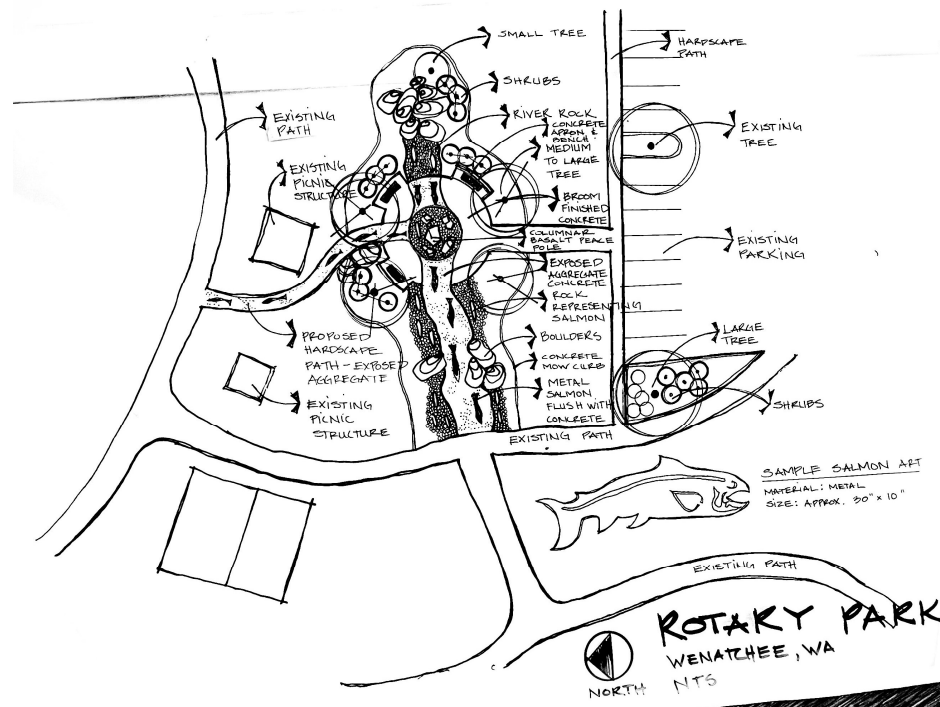


# Peace Pole Plaza

- ▶ Rotary International Peacebuilding focus.
- ▶ Reflect elements of our natural environment.
- ▶ Acknowledge the p'squosa (Wenatchi) for their stewardship of our area.
- ▶ A place to pause and mediate on our inner peace and facilitating peace in our families and our community.



# Peace Pole Plaza-The Concept





## Peace Pole Plaza-The Essentials

- ▶ Basalt colonnades as central focus at the “confluence” of area rivers.
- ▶ Pathways representing the Columbia, Wenatchee and other local waterways.
- ▶ Migrating salmon.



# Peace Pole Plaza-The Essentials

- ▶ Granitic boulders.
- ▶ Landscaping.
- ▶ Benches for reflection and discovery.



# Peace Pole Plaza-Languages

- ▶ The essence of the sentiment ***May Peace Prevail on Earth*** expressed in:
  - ▶ Southern Interior Salish dialect of the p'squosa (Wenatchi) Indigenous People
  - ▶ Japanese
  - ▶ Spanish
  - ▶ English



## Peace Pole Plaza-The Characters

- ▶ Kari Bergh, original co-designer of Rotary Park.
- ▶ Terry Valdez, Consulting Artist.
- ▶ Dave Erickson and Rob Richards, City of Wenatchee Parks, Recreation and Cultural Services Department.





# Peace Pole Plaza-The Characters

- ▶ Rotary Park Committee:
  - ▶ Sarah Achterhof, Earl Tilly, Randy Zielinski, Rotary Club of Wenatchee Confluence
  - ▶ Jim Adamson, Rotary Club of Wenatchee Sunrise
  - ▶ Robert Jourdan, Rich Peters, Phil Rasmussen, Rotary Club of Wenatchee



# Peace Pole Plaza-The Characters

- ▶ Peace Pole Plaza Committee:
  - ▶ Carol and Jim Adamson, Rotary Club of Wenatchee Sunrise
  - ▶ Selina Danko, Greg Franz and Dan Moody, Rotary Club of Wenatchee Confluence
  - ▶ Mark Kulaas and Ken Robertson, Co-Chairs, Rotary Club of Wenatchee.



# Peace Pole Plaza-The Beginning





# Peace Pole Plaza-Setting Colonnades







# Peace Pole Plaza-The "Confluence"





# Peace Pole Plaza





# Peace Pole Plaza-The "Columbia"





## Peace Pole Plaza-The "Columbia"







## Peace Pole Plaza-Financial Matters

- ▶ Projected Cost: \$102,000
- ▶ Donated revenue to date: +/- \$80,000
- ▶ Balance for project: \$22,000
- ▶ Replenish Rotary Park capital account: \$23,000



# Peace Pole Plaza-Opportunities

- ▶ Basalt colonnades:
  - ▶ 8 Foot- \$4,000
  - ▶ 7 Foot- \$3,500
  - ▶ ~~6 Foot- \$3,000~~ **SOLD**
  - ▶ 5 Foot- \$2,500
  - ▶ 4 Foot- \$2,000
- ▶ Recognition on plaza sign.





# Peace Pole Plaza-Opportunities



- ▶ 12" X 12" plaque honoring someone or event (three available)

▶ ~~\$5,000~~ **SOLD OUT**



# Peace Pole Plaza-Opportunities

▶ Benches (three available)

▶ \$3,000

**SOLD OUT** for the Peace Pole Plaza; more available for placement elsewhere in the park.







# Peace Pole Plaza-Opportunities



- ▶ Migrating salmon (~~22~~ 15 available; 7 have been sold)
  - ▶ \$1,000 each
- ▶ Recognition on plaza sign.



# Plaza and Pickleball Opportunities

## ► Commemorative tiles:

► 4.25"-\$150

► 8.5"-\$600

## ► Can include your graphics, logo.





## Sign Me Up

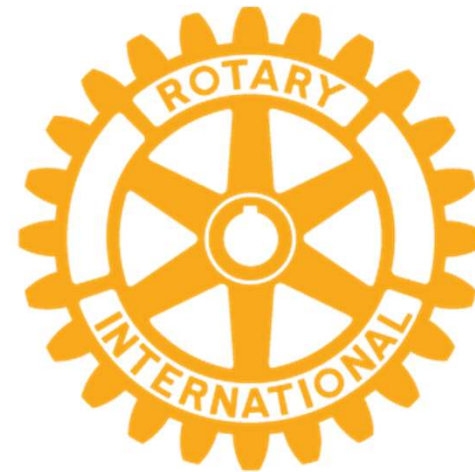
- ▶ More information including how to donate available at:

**[wenatcheerotary.org](http://wenatcheerotary.org)**



We are Rotary, and We Rock

**Rotary**  
***PEOPLE of ACTION***







# Thank You!!!



- ▶ Questions, comments, complaints, compliments, palm readings:
- ▶ Mark Kulaas: 509.668.2658  
mkulaas@nwi.net
- ▶ Ken Robertson: 804.201.6839  
robertson12001@gmail.com