



“To get the full value of joy, you must have someone to divide it with.”

MARK TWAIN



WE ARE...BUILDING OHANA

A neighborhood where love lives

The BUILDING OHANA team



OHANA

a family-friendly village of
homes for people of all ages
abilities





OHANA... THE HAWAIIAN WORD FOR FAMILY

I've been dreaming of a close-knit neighborhood of mutual support since my son was eleven years old. Imagining a community that engages with him and with our family; friends next door who don't look away when we are struggling, who care for us, include us and understand that knowing my son who cannot speak or walk enriches their lives. I've drawn this neighborhood a thousand times in my head, on scrap paper, on napkins. I've imagined these people. It's OHANA.

Pamela - Mother and Envision OHANA participant
2016

HOUSING SHORTAGES

over 70 percent of adults with I/DD remain in family homes with aging parents/caregivers

A CRISIS OF CARE

with 100,000 LESS caregivers for home and in institutions of care

OVER RELIANCE

on systems of support never intended to replace the daily connection to home, family and friends.

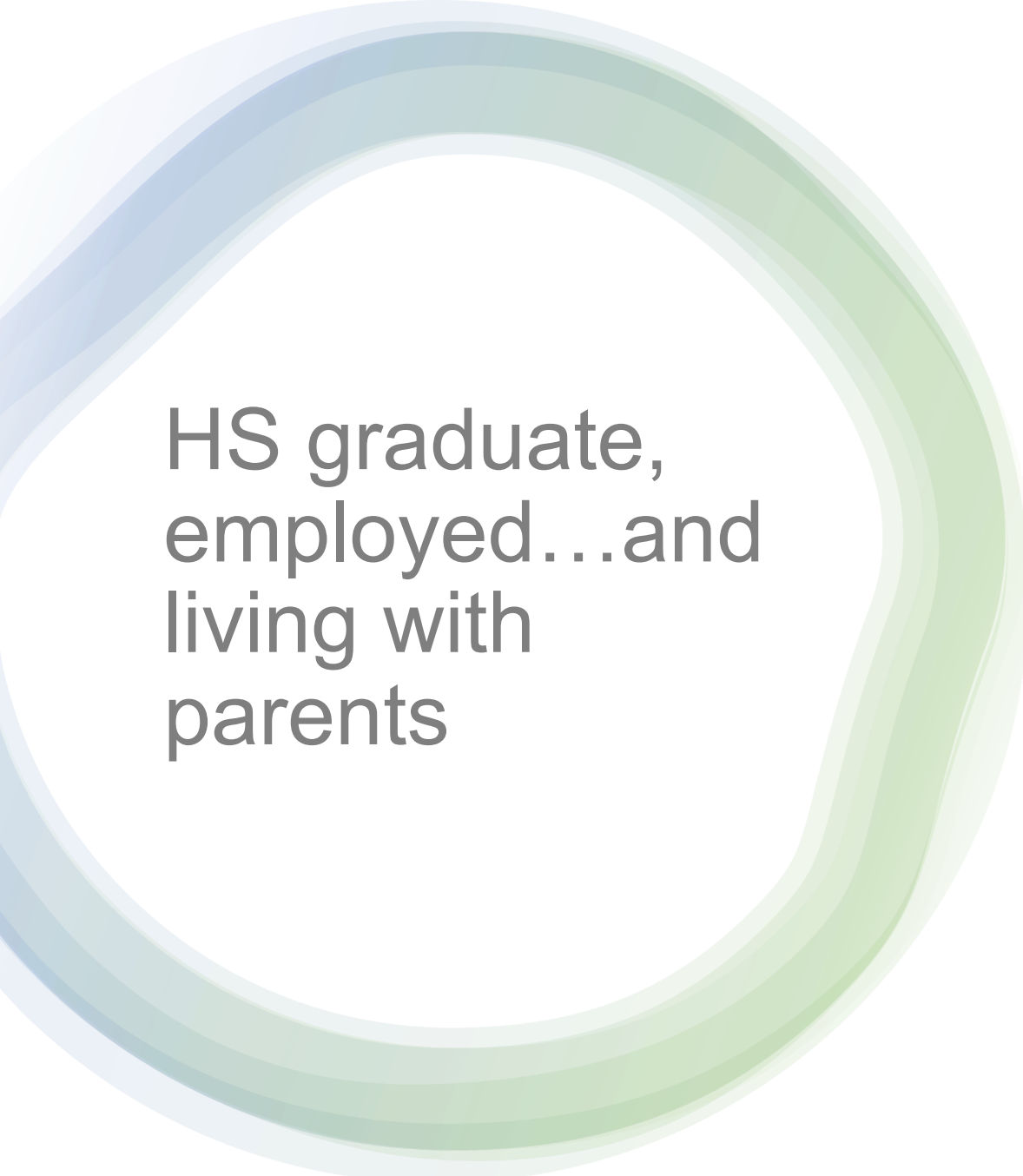
Three Underlying Challenges



Our Ohana Solution... **Intentional Neighboring**

Re-stitching the Social Fabric of Neighborhoods

- Storytelling...creating a real definition of inclusion so that it's not a buzzword
- Identifying common barriers to a full life – cultural, social, and environmental...and removing them
- Reframing common notions of vulnerability - them is us.
- Valuing the wisdom and contributions of every generation
- Clarifying the both the value and the limitations of formal paid services, social safety nets and systems of care
- Taking up the gap...the responsibilities to one another that we all have
- Making it personal and person-centered, through relationships



HS graduate,
employed...and
living with
parents

“We’ll all look different, act different, be different. We’ll have different strengths and abilities, come from different places and have different ideas and beliefs. We’ll be old and young, sometimes strong and sometimes not so strong. We will help each other. We’ll have places to get together and private places when we need peace and quiet. But in OHANA, we will never feel alone.

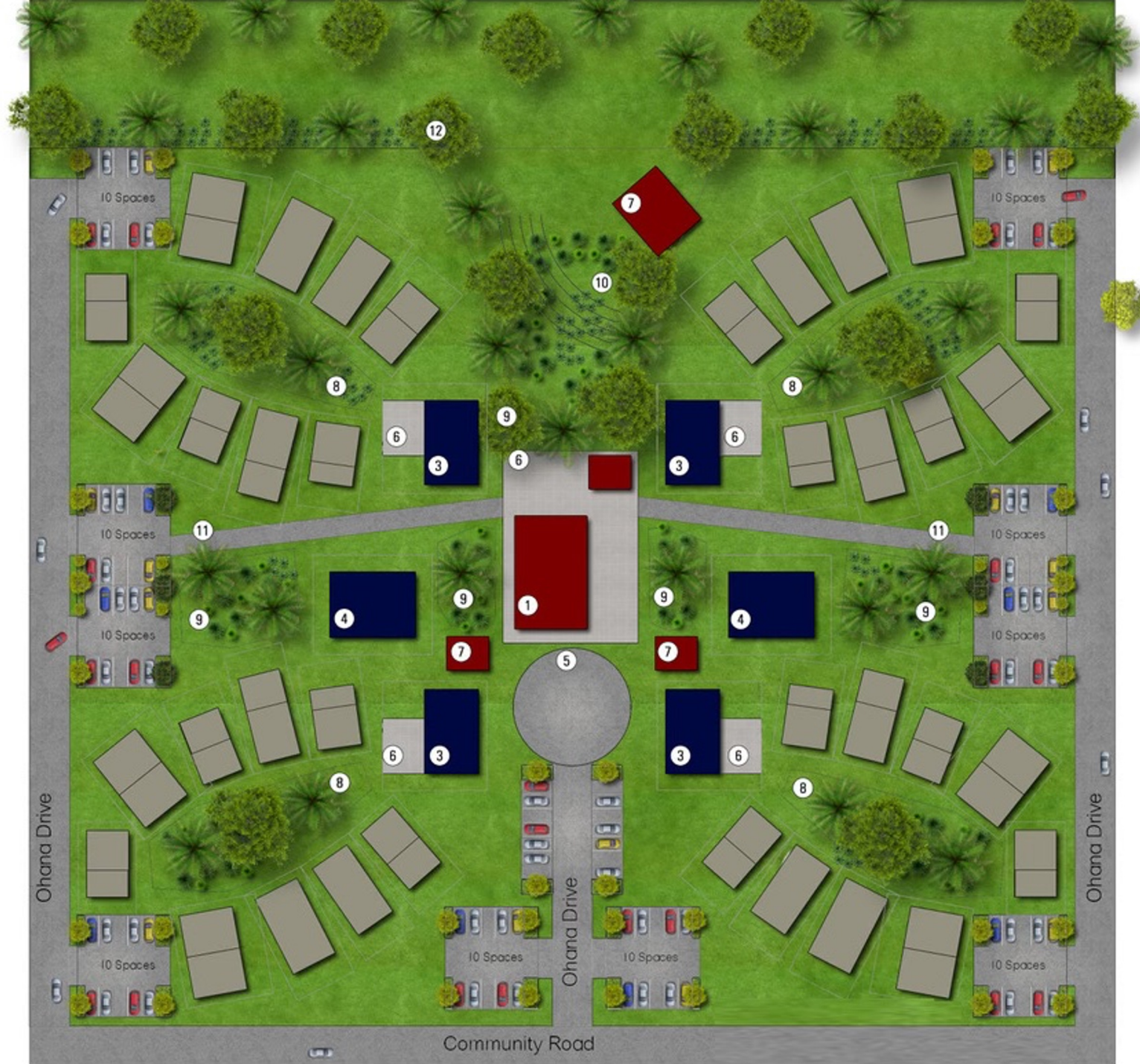
Stan - A young man with autism and an Envision OHANA participant



People, Purpose, Place

a neighborhood
designed to
build OHANA
relationships...

- COMMUNITY SITE FEATURES:
- ① Ohana Common House
 - ② Guest Rooms
 - ③ Supportive Living House
 - ④ Co-Living House
 - ⑤ Drop off
 - ⑥ Patio
 - ⑦ Barn / storage etc
 - ⑧ Micro-hood surrounded by SFR
 - ⑨ Community Open Space
 - ⑩ Amphitheater
 - ⑪ Fire Access Road
 - ⑫ Farm / Park - not owned by Ohana





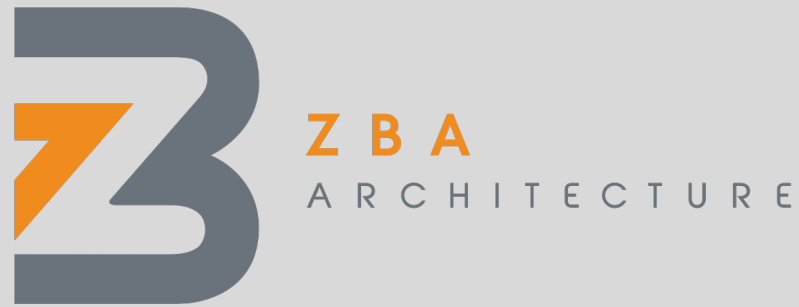
Housing Designed for All Ages & Abilities



OHANA in the Inland Northwest

- A safe and connected neighborhood with broadly affordable homes for all
- The opportunity to know, include and support people with I/DD as lifelong, contributing residents
- A nonprofit bringing new paradigms for social connection, services, programs and partnerships

OHANA PARTNERS



Land and Life
Building Sustainable Communities



Ohana...

DIVERSE, INCLUSIVE,
ATTAINABLE,
MULTIGENERATIONAL,
PURPOSEFUL, RELATIONAL,
COOPERATIVE...a
BEAUTIFUL
NEIGHBORHOOD of HOMES
for PEOPLE

Thank you for your
interest in BUILDING
OHANA

Deborah Finck
Executive Director
dfinck@buildingohana.org



BUILDING OHANA
a neighborhood where love lives