

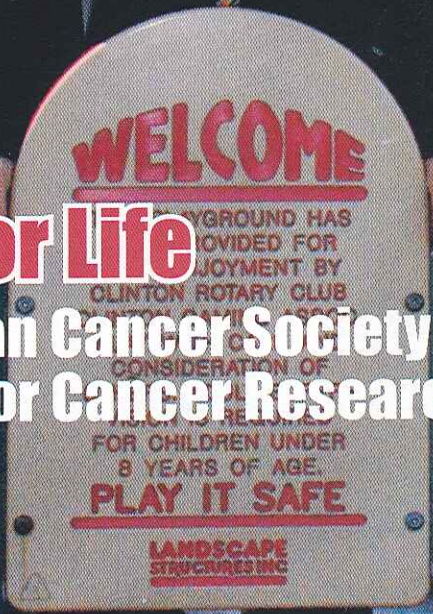
FREE  
publication of the  
Clinton Herald

# BRIDGES

*Bringing People Together* Summer 2013

**A Place to Play**  
Rotarians Lead Charge to Create,  
Upgrade City Parks

**Relaying for Life**  
Annual American Cancer Society Event  
Raises Money for Cancer Research



PRSRRT STD  
ECR  
US POSTAGE  
PAID  
CLINTON IA  
PERMIT 3



# A Place to Play



## Rotarians Lead Charge to Create, Upgrade City Parks

**By Samantha Pidde**  
Herald Staff Writer

CLINTON — In fall 2005, the Clinton Rotary Club had an idea to create a playground along Clinton's Riverview Drive. The group voted on creating Rotary Park Playground at Riverview Park in August 2007. And with the help of volunteers throughout the community, the club's \$50,000 investment as well as revenue from grants and donations, the park became a reality, reaching completion a few years later.

"If we don't invest in our kids, what do we invest in," Rotarian Cheryl Frey asked.

At Rotary Park, that investment can be seen in many areas. There is a large activity area that children can play on, swings and a slide. A \$23,000 climbing stone stands on one end of the area. The strange shape offers grips to allow children to scale its surface. At one time, the playground was set in sand. However, a few years ago, Frey and her husband were visiting an out-of-town park and saw a soft rubber surface. She brought the idea back to the Rotary Club.

Clinton Rotary President Norlan Hinke said the current surface, made out of reused tires, is safer for children. He added that it is also much cleaner than sand. The new surface was installed in June 2010 and in September 2010, benches on the bike path were replaced. Rotarian Gary Foster added that the cost of the new restrooms was \$60,000 and constructing a shelter cost \$40,000.

For the past five years, Rotary has held an auction event to help pay for the area parks. Frey said the auction has grown a little each year. As people see the work that Rotary

## Compassion is the cornerstone to providing meaningful care.



"They are more than caregivers...they are lifesavers."

- Affordable low rates
- Waiver Approved
- Guaranteed Services
- Locally Owned
- Free Consultations
- Flexible Scheduling
- Medication Monitoring
- Hygiene Assistance/Personal Care
- Meal preparation/Diet monitoring

- Housekeeping
- Errands and Shopping transportation
- Joyful Companionship
- Temporary or Long term Care
- Weekends, holidays
- Respite for family caregivers
- Safety supervision
- Laundry

*Serving Clinton, Dubuque, Jackson, Whiteside, Jo Davies and Carroll Counties.  
Member of the Better Business Bureau. Serving the community since 2000.*

# TLC IN HOME CARE

Toll Free: 855-242-2977 • Cell: 249-3868





does for the area, they are more likely to donate and attend. "Only with the support of our Sponsors, auction items donors, and those who attended our auctions and purchased items, we have been able to raise the funds to support our Parks For Children projects for the past five years." Rotarian Francie Hill said. "These joint efforts have given our community's girls and boys safe, maintenance-free playgrounds that might not have been possible to fund with city tax dollars." Foster and Hinke agreed that a big supporter of the playground projects is the city. Parks Superintendent Tom Krogman has worked with the organization to create Rotary Park. Foster was thankful for all the labor that the parks department provided for the project. "I think we ended up with the best playground in Clinton down in

**Photo:**

**Left:** Violet Jurgerson, 14 months, enjoys the playground at Rotary Park by Riverview Drive. **Right:** Chase (left) and Dasie (far right) Jurgerson push their 14-month-old twins, Violet (center left) and Levi, (center right) on the swings at Rotary Park by Riverview Drive.

Photos by Samantha Pidde

Riverview Park," Krogman said. Mary Swanson, from Rotary, said many area day cares and programs use Rotary park. YWCA Youth Director Jana Linville brings the children to the park in the summer. She said the summer campers are fortunate to have access to the facilities at the park. "The equipment is amazing, the facilities are well maintained, and it's one of our favorite destinations," Linville said. Many families even travel to

**Photo:**

**Below:** Rotarians Norlan Hinke (left), Mary Swanson, Gary Foster and Cheryl Frey look out over Rotary Park from atop the large playground structure.

Photos by Samantha Pidde



city of Clinton  
**SHOWBOAT**

303 Riverview Dr.  
Clinton, Iowa

563-242-6760

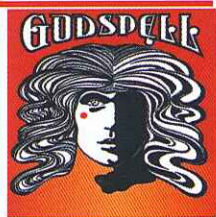
[www.clintonshowboat.org](http://www.clintonshowboat.org)

Tickets on Sale at  
Clinton Printing,  
Wagner Pharmacies,  
Sweet Woodruff  
and Online

**2013 Season**



June 6-16



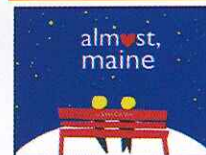
June 20-29



July 3-21



July 25 -  
August 3



August 15-23

**Theatre Camp**

July 8 - 19

July 29 - August 10

Grades 1 - 8

Theatre for Children  
Saturdays at noon \$5

**Schoolhouse Rock Live, Jr.!**

August 10-11



# BOONSTRA

## HEATING & AIR CONDITIONING

*"Serving The Community  
For 50 Years!"*



- Specializing in Residential and Commercial Heating and Air Conditioning
- 24-Hour Emergency Service

**FREE ESTIMATES**



*"Your Amana  
&  
Goodman Dealer."*

**BOONSTRA**  
**HEATING & AIR CONDITIONING**  
1400 3rd Street, Fulton, IL  
**815-589-3113**



**Photo:**

**Above:** This graphic shows what the new playground at Emma Young Park will look like. The playground was set to be installed this spring as weather allowed.

Photos by Samantha Pidde

Clinton for its great parks. Swanson sees a lot of families during the weekends. In late April, Dasie and Chase Jurgerson were visiting family in Clinton for a few weeks. They brought their 14-month-old twins, Levi and

Violet to the park. Violet really enjoyed playing on the swings. Now the club is turning its attention to other areas in Clinton that could benefit from a park. With the work at Rotary park complete, the club has moved on to plans for Emma Young Park. Krogman has commented previously that once there was an old wooden structure at the park. However, that equipment has long

## Clinton Area Parks

### ■ Chancy Park

*Iowa 30 and 23rd Place, Clinton, IA*

### ■ Eagle Point Park

*North Third Street and Stockwell Lane, Clinton*

### ■ Emma Young Park

*11th Avenue North and No. 14th St., Clinton*

### ■ Lyons 4-Square Park

*Main Avenue and Roosevelt Street, Clinton*

### ■ Riverview Park

*Sixth Avenue South to Ninth Ave. North, Clinton*



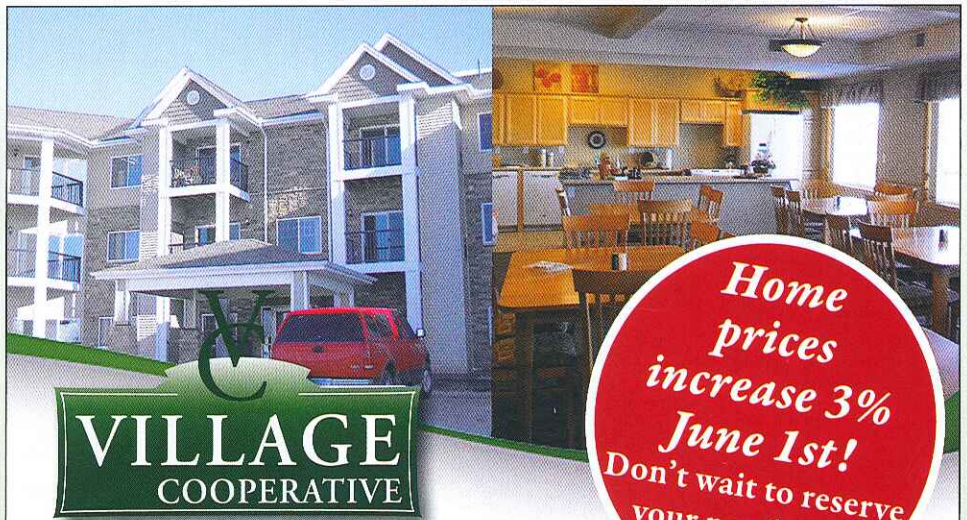
since rotted away and was taken down. At the time, the equipment was not replaced due to the nice playground at Harding Elementary School. With the school gone, Krogman said the area needs a playground.

The club has been able to afford the new equipment with grants, including a \$50,000 Clinton County Development Association grant. Rotary also was able to put in \$25,000 from what it raised last year.

Kompan saleswoman Vibeke Larson visited the Rotary Club in February to show the group just what kind of playground the Emma Young Park will feature. The proposed playground will include Kompan's Gym 2, best for children ages 2 to 5. This unit features a rock climbing wall, slides and a climbing net. The gym also has a play counter, and a basin, binoculars, megaphone and hammock also are offered. Swings and spinner bowls will also be featured in the park, as well as a zip line.

The equipment has been ordered by Krogman and will be installed this spring or summer as weather allows. After the Emma Young playground is complete, Rotary hopes to turn its attention to Rainbow Park near Garfield Street. Hinke was amazed by the great deal of study that goes into choosing playground equipment. Frey said she now understands that playgrounds not only allow children to play, but also help children develop.

"I think it just proves that if you have a vision, look what you can do," Frey said of the Rotary Club and community's work. ■



## WE'RE NOW OPEN

*Only 7 beautiful new homes available!*

### DISCOVER THE BENEFITS

The best feature about living in our community for active adults, 55+, is that you'll enjoy a maintenance-free lifestyle!

- Maintenance-free living
- All the benefits of home ownership
- In-home laundry & storage areas
- Guest suite
- Woodworking shop
- Secure building
- Fitness center
- Underground heated parking & car wash

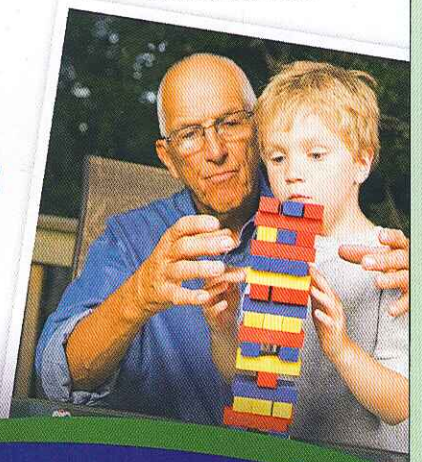
*"We can own our living space which makes it an investment for us as well as a positive lifestyle change. Also, our neighbors are people in our age group who are looking for the same lifestyle change as us!"*

*- Bob and Sue*

**Contact Tracey today!**

**(563) 242-9000**

1160 14th Ave. NW, Clinton  
[clinton@reeddevelopment.com](mailto:clinton@reeddevelopment.com)



[www.VillageCooperative.com](http://www.VillageCooperative.com)



Find us on:  
**facebook.**