



# NOR'WESTER

## Rotary Club of Northwest Des Moines

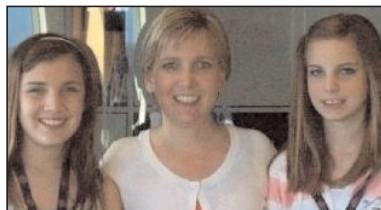
[www.clubrunner.ca/northwestdesmoines](http://www.clubrunner.ca/northwestdesmoines)

### Prez Sez...

Wendi Wilson

### Happy Anniversary Rotary!!!

This week in 1905, Paul Harris, Gustavus Loehr, Hiram Shorey, and Silvester Schiele met to talk about their personal and professional experiences. Harris then unfolded his general plan for a club. It was created because of Harris' wish to capture in a professional club the same friendly spirit he had felt in the small towns of his youth. The Rotary name derived from the early practice of rotating meetings among members' offices. Out of this simple beginning sprang the world's first international service organization, which has now grown to include more than 1.2 million members in over 33,000 clubs in more than 200 countries and geographical areas.



Abbie, Prez & Gabi

### Scribbles

#### Jim Arthur

#### The Mayan Civilization

Jim Arthur presented an amazing program about the Mayan Civilization. Jim introduced the Mayans as a historic and enduring civilization that existed in what is now southern Mexico, Honduras, Guatemala, and Belize from approximately 2500 BC until approximately 1600 AD. The Mayan culture is significant in that it developed independent of influences from Europe and Asia, yet came up with achievements that paralleled these other cultures. The fact that this happened provided amazing insight into the human mind and the power of culture development. The Mayans were experts in observation of the heavens. They were able to predict celestial events with great precision.

Among their achievements were the development of a calendar, a number system based on the powers of 20, hieroglyphic writing, books, maps, and, of course, knowledge of astronomy.

The timeline for the Mayan cultures is divided into three periods: Pre Classic from 2500 BC to 250 AD, Classic from 250 AD to 800

AD, and Post Classic from 800 AD to 1600 AD. The culture collapsed during the latter part of the Post Classic era. However, many people living in the regions once part of the Mayan empires are direct descendents of the earlier peoples. Jim indicated that approximately 7 million Mayan people live today in Guatemala, Mexico, Honduras, and Belize. In the case of Guatemala, Mayan's are 40 percent of the country's population.

Jim showed pictures from three important sites. The first was located at Copan, Honduras. The second was located at Yaxha, Guatemala, which Jim identified as being less busy with tourists. This was also the site of the one of one of the episodes of the popular CBS show Survivor. The third site was located at Lamanai, Belize. The temple located there is one of the tallest at 11 stories.

It was a great program. I wish to thank Jim on behalf of the club for bringing it to us.



Respectfully  
Submitted,  
Phil Houle

February 26, 2010

Program:

Judge Larry  
Eisenhauer

Arranged By:

Nancy Johnson

Greeter:

Wanda Armstrong

Invocation:

Jim Arthur

Sergeant:

Marv Johnson

Scribe:

Marv Johnson

### 2009-10

#### OFFICERS AND DIRECTORS

Wendi Wilson, President

Eric Dickinson, President Elect

Brad Helgemo, Secretary

Wanda Armstrong, Treasurer

Ed Arnold, Director

Jim Arthur, Director

Chuck Corwin, Director

Rick Grant, Director

Marcus Dunn, Director

Cam Torstenson, Past President

Dianne D-Nelson, Exec Sec

Mark McAndrews, Exec Treas

#### Future Programs

3/5: Dave Bush  
Extraordinary Help

3/12: Jeff Fleming  
Des Moines Art Center

## Other Local Meetings

### Tuesday

Ankeny, Ankeny Golf & Country Club, (11:45)

Johnston, Hyperion Golf & CC, (7:00 am)

Dallas Center, Memorial Hall, (Noon)

West Des Moines, DM Golf & CC, (Noon)

### Wednesday

East Polk County, Prairie Meadows, (7:00 am)

Adel, Patrick's Restaurant, 211 S 7th St, #C, (Noon)

### Thursday

Waukee, Des Moines Golf & Country Club, (6:45 am)

Des Moines, Hotel Fort Des Moines, (Noon)

Winterset, Northside Cafe, (Noon)

### Friday

Des Moines, AM, Wakonda Club at 3915 Fleur Dr. (7:00 am)



## We'll Be Singing . . .

Opening: My Country 'Tis of Thee

Song Time:

The 4-Way Test - #18

When You're Smiling - #82

Items for the Nor'Wester should be submitted every Wednesday by Noon. Please send to:

**Chuck Corwin**

Phone: 515-226-7605

Fax: 515-223-9301

ccorwin@bryton.com

## Rotary Minute...

### World Community Service

World Community Service (WCS) is the Rotary program by which a club or district in one country provides humanitarian assistance to a project of a club in another country. Typically, the aid goes to a developing community where the Rotary project will help raise the standard of living and the quality of life. The ultimate object of World Community Service is to build goodwill and understanding among peoples of the world.

The WCS Projects Exchange features hundreds of activities in developing areas. Updated monthly, the projects exchange lists project descriptions, estimated costs, and contact information.

The exchange provides a practical way to link needs with resources, while building bridges of friendship and world understanding. Every Rotary club is urged to undertake a new World Community Service project each year.

## Dates to Remember...

### MARCH

- 2 - Read Across America Day/Dr. Seuss Birthday
- 14 - Daylight Saving Time Begins
- 17 - St. Patrick's Day
- 20 - First Day of Spring

### APRIL

- 1 - April Fool's Day
- 4 - Easter
- 15 - Income Taxes Due
- 21 - Administrative Professionals Day
- 22 - Earth Day

## Future Information

### Program

Chairperson:

**Gil DeRoos**

Kevin Smith, March 5

Dave Nagel, March 12

No Meeting, March 19

### Greeters

Chairperson:

**Nancy Johnson**

Chuck Corwin, March 5

Don Chafa, March 12

No Meeting, March 19

### Invocation

Chairperson:

**Jim Pittman**

Cam Torstenson, March 5

Julia Taylor, March 12

No Meeting, March 19

### Sergeant

Chairperson:

**Kevin Smith**

John Pittman, March 5

Dave Smith, March 12

No Meeting, March 19

### Scribe

Chairperson:

**Larry Sample**

Nancy Johnson, March 5

Paul Kirpes, March 12

No Meeting, March 19