

NOR'WESTER

Rotary Club of Northwest Des Moines
www.clubrunner.ca/northwestdesmoines

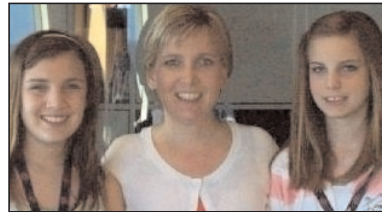
Prez Sez...

Wendi Wilson

The needs are tremendous in so many parts of the world.

Nearly 1/3 of the world is starving and someone dies from starvation every 3.5 seconds. **"Meals from the Heartland"** is working to remedy some of that need. This September 3-7th at Hy-Vee Hall, volunteers are needed to package over 4 million meals through this nonperishable food packaging event.

Volunteers of all ages work in 2-hour shifts to assemble, weigh, seal and pack meals for the needy overseas. Go to www.mealsfromtheheartland.org to sign up and get involved.



Abbie, Prez & Gabi

Scribbles

Tiffany Spinner Heart Connection

We were fortunate to have a former Rotary Exchange Student, former member, and daughter of a long time member present the program on Heart Connection Children's Cancer Programs. This organization is a 1988 spin-off from Amanda the Panda. The key mission is to enhance the quality of life for children affected by childhood cancer by providing programs for recreation, education and family support. The entire family is affected by this disease. Over 400 active families are served throughout Iowa. The focus is not on what cancer has taken away, but on what the affected can do.

The organization is a donor choice organization, but is not otherwise affiliated with a national organization. The activities and services are accomplished by volunteers who contribute 30,000 hours per year - equivalent to more than \$450,000 worth of valuable time. Some of the programs were:

Summer YCamp - camping experience empowers the youth.

Sibling Camp - brothers and sisters participate, share experiences.

Family Camps - spring and fall, see the kids interacting with others.

Beads for Bravery - a lanyard with symbols that track the various process/steps that the have gone through, sort of like a journal. Kids compare and talk about their beads and its significance.

Adopt Families for the Holidays - opportunities to engage families whenever possible.

Club Hope - organized by parents for parents to talk about their different treatments and share experiences.

Survivorship Connection - once in our family, always in our family. What is important to you and relevant.

It is nice to know that other people care.

Larry Sample, Scribe



August 28, 2009
Program:

Boy's & Girls Club
of Central Iowa

Arranged By:
Nancy Johnson
Greeter:
Tim Bonney
Invocation:
Doyle Sanders
Sergeant:
Julia Taylor
Scribe:
Roger Nyberg

2009-10

OFFICERS AND DIRECTORS
Wendi Wilson, President
Eric Dickinson, President Elect
Brad Helgemo, Secretary
Wanda Armstrong, Treasurer
Ed Arnold, Director
Jim Arthur, Director
Chuck Corwin, Director
Rick Grant, Director
Marcus Dunn, Director
Cam Torstenson, Past President
Dianne D-Nelson, Exec Sec
Mark McAndrews, Exec Treas

Future Programs

9/4: Bruce Anderson
IA Automobile Dealers
9/11: Carolyn West
Author/Artist

Other Local Meetings

Tuesday

Ankeny, Ankeny Golf & Country Club, (11:45)

Johnston, Hyperion Golf & CC, (7:00 am)

Dallas Center, Memorial Hall, (Noon)

West Des Moines, DM Golf & CC, (Noon)

Wednesday

East Polk County, Prairie Meadows, (7:00 am)

Adel, Patrick's Restaurant, 211 S 7th St, #C, (Noon)

Thursday

Waukee, Des Moines Golf & Country Club, (6:45 am)

Des Moines, Hotel Fort Des Moines, (Noon)

Winterset, Northside Cafe, (Noon)

Friday

Des Moines, AM, Wakonda Club at 3915 Fleur Dr. (7:00 am)



We'll Be Singing . . .

Opening: The Star-Spangled Banner

Song Time:

The 4-Way Test (#18)
Smiles

Items for the Nor'Wester should be submitted every Wednesday by Noon. Please send to:

Chuck Corwin

Phone: 515-226-7605

Fax: 515-223-9301

ccorwin@bryton.com

Rotary Minute...

Types of Membership

There are two types of Rotary club membership: active and honorary. An active member is one who has been elected to membership under a business or professional classification and enjoys all the obligations, responsibilities, and privileges of membership as provided in the RI Constitution and Bylaws. Active members may hold office in their clubs and serve RI at the district and international levels. Honorary Rotary membership may be offered to people who have distinguished themselves by meritorious service in the furtherance of Rotary ideals. An honorary member is elected for one year only, and continuing membership must be renewed annually. Honorary members cannot propose new members to the club or hold office and are exempt from attendance requirement and club dues. Many distinguished people have been honorary members of Rotary clubs, including Sir Winston Churchill, Thomas Edison, Walt Disney, and Margaret Thatcher.

BIRTHDAYS

August 26

Jim Lipscomb

August 27

Bill Grask

BIRTHDAYS



Future Information

Program

Chairperson:

Gil DeRoos

Nancy Johnson, Sep. 4

Gil DeRoos, Sep. 11

Phil Houle, Sep. 18

Greeters

Chairperson:

Nancy Johnson

Dick Amick, Sep. 4

Nancy Johnson, Sep. 11

Beth Goedken, Sep. 18

Invocation

Chairperson:

Jim Pittman

Larry Sample, Sep. 4

Diana Reed, Sep. 11

Diane Porter, Sep. 18

Sergeant

Chairperson:

Kevin Smith

Kevin Smith, Sep. 4

Brett Bremser, Sep. 11

Beth Goedken, Sep. 18

Scribe

Chairperson:

Larry Sample

Wanda Armstrong, Sep. 4

Diane Porter, Sep. 11

David Smith, Sep. 18