

Aligning with Rotary Pillars

Fighting Disease

Food is the most powerful factor for people's health.

By delivering more food, the El Paso Community is less vulnerable to a wide variety of disease entities.

There is a documented link between the lack of food and diabetes, according to the University of San Francisco medical center.

Hunger and malnutrition have been shown to stunt growth and early development in children, as well as make them vulnerable to disease.

Seniors are often faced with the difficult decision of choosing between food and medicine, resulting in a relapse of their medical condition and demonstrating an increase in health care utilization.

EPFH has received grant support to hire a nutrition educator. This individual participates in health fairs and EPFH mobile pantries, providing nutritional education, health information, and healthy eating demonstrations. Other healthcare partners provide cancer screenings at such health fairs.



Providing Clean Water

EPFH provides bottled water to its 119 community partners (food pantries, shelters, and social service agencies) at no cost.

We provide mobile pantry service to El Paso colonias, where running water is significantly in short supply.

Aligning with Rotary Pillars (Cont.)

Saving Mothers and Children

Hunger has many untoward effects on children, in addition to the alarming death due to malnutrition.

Hunger renders children inattentive, unable to concentrate, and having other difficulties learning in school.

Mothers are often faced with the difficult decisions of feeding themselves or feeding their children, of buying food or paying for medicine and health care.

Supporting Education

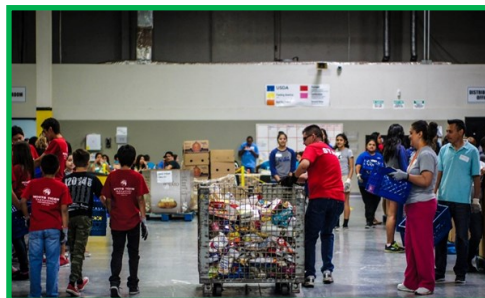
Many children endure weekend hunger due to the lack of food in the household.

By providing households with weekend and summer food, these problems can at least be minimized. El Pasoans Fighting Hunger Food Bank has developed a model school pantry program to address this issue.

Growing Local Economies

The ultimate goal of EPFH food provisions is to stabilize lives and help individuals become self-sustaining, able to apply for jobs and perform in the workplace.

EPFH employs 20 full-time staff, and as it grows, it will add additional jobs to support the local economy. Over 6,000 volunteers a year give of their time to sort, inspect, and process food, and they are the equivalent of 9.5 full time staff.



Our Mission: To combat the hunger crises in our region by strategically procuring and distributing nutritious food through community partners...because no one should go hungry.



Food Bank Operations Center Project 2016

9541 Plaza Circle, El Paso, Texas 79927

Victor Nevarez, CEO
(915) 526-6028
vnevarez@feedingamerica.com

Food insecurity in our community:

131,000 in El Paso are food insecure (Feeding America), or **1 in 6 of all El Pasoans. 1 in 3 children (31.9%) are**, and they number 69,920.

65% of households are working
31.5% are children
22.2% are seniors

About EPFH:

EPFH is El Paso's only Food Bank.



EPFH belongs to Feeding America, the national food bank charity. It is a Partner Distribution Organization. This means that EPFH is able to garner food on a national scale and receives other support from Feeding America.

EPFH distributed **over 9 million pounds of food in 2015, or 7,500,000 million meals.**

EPFH plays a life-saving role in providing food to families struggling to meet basic needs. **EPFH serves 99,400 non-repeat clients** during the course of the year.

EPFH receives food inventory from the USDA, Feeding America, Feeding Texas, community food drives, and corporate contributions.

Food is inspected, packed, and distributed to **120 non-profit community partners** (food pantries, churches, shelters, and social service agencies).

EPFH sponsors **100 mobile pantries a year**, bringing food directly to households in under-served or unserved communities in the El Paso area.

Project Summary

As part of a comprehensive capital expansion project, EPFH plans the rehabilitation of 5,510 square feet of office space intended for an Operations and Community Center. This Center would consolidate such crucial food bank functions as:

Partner Relations (support to 120 food pantries in the community)

Volunteer Coordination (supervision of over 6,000 volunteers annually)

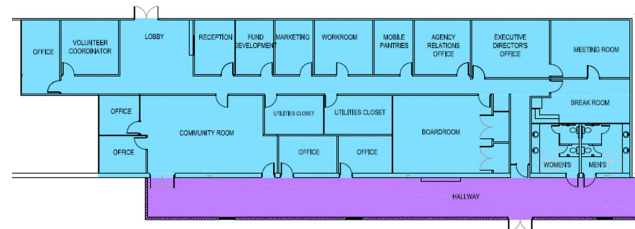
A Community Center (for volunteer training and public service)

Mobile Pantries (providing assistance to unserved and underserved communities)

Meeting rooms and general office space

The project entails the demolition and reconstruction of existing walls, wall coverings, ceiling tiles, flooring, and doors, together with the addition of two bathrooms. The total project cost is \$268,379 of which \$150,599 would be donated labor and materials, and \$117,779 would be out-of-pocket labor and materials.

Rebuild Plan



Project Impact

Will enable us to distribute 1,000,000 pounds of food every month, equivalent to 833,000 more meals

Will encourage 500 plus volunteers a month to engage in service above self, which is aligned with the Rotary El Paso identity

Will build space for nutrition and financial education to avoid disease and long-term causes of hunger and instability.

Project Detail

Category	Total	Donated	Hard Cost
Architectural/Engineering	\$31,700	\$5,000	\$26,700
General Conditions	\$8,500	\$5,500	\$3,000
Site Overhead	\$41,471	\$30,681	\$10,790
Site Work	\$1,585	\$504	\$1,080
Building Demo	\$2,685	\$2,685	\$0
Site Improvements	\$1,188	\$0	\$1,188
Concrete Work	\$1,066	\$1,066	\$0
Metal	\$798	\$0	\$798
Doors & Windows	\$5,740	\$0	\$5,740
Finishes	\$53,267	\$29,104	\$24,163
Specialties	\$3,293	\$124	\$3,169
Furnishings	\$1,440	\$0	\$1,440
Mechanical	\$62,624	\$62,424	\$200
Electrical	\$27,022	\$13,511	\$13,511
Plumbing	\$12,000	\$0	\$12,000
Contingency	\$14,000	\$0	\$14,000
Totals	\$268,379	\$150,599	\$117,779

