



# !Makeover McKinley!

Presentation to LP Rotary

9-29-22

# Current Conditions





# The Proposal





# Lake Clear Playground

**Jan. 2022**



**Sept. 2022**





# New Play World Equipment




# Rotary Ask



A large orange circle is positioned on the left side of the slide, partially cut off by the edge.

# Funding

- Total project cost: ~\$55,000 (not including in-kind)
  - LEAF Grant:\$50,000
  - In-kind services: ~\$30,000
  - Rotary ask: \$3000
- 
- A series of four yellow dashed line segments are arranged in a curved, upward-pointing arc in the bottom right corner of the slide.

# Timeline

- Lake Clear equipment is moving!
- Within the next few weeks: Relocate existing play equipment within the park
- Prep ground for new equipment
- Next 1-2 months: Assembly both large structures on site
- Before too much snow falls: fencing and parking area



# Fawn Valley

## UPDATES



# The Neighborhood





# We have a street name!

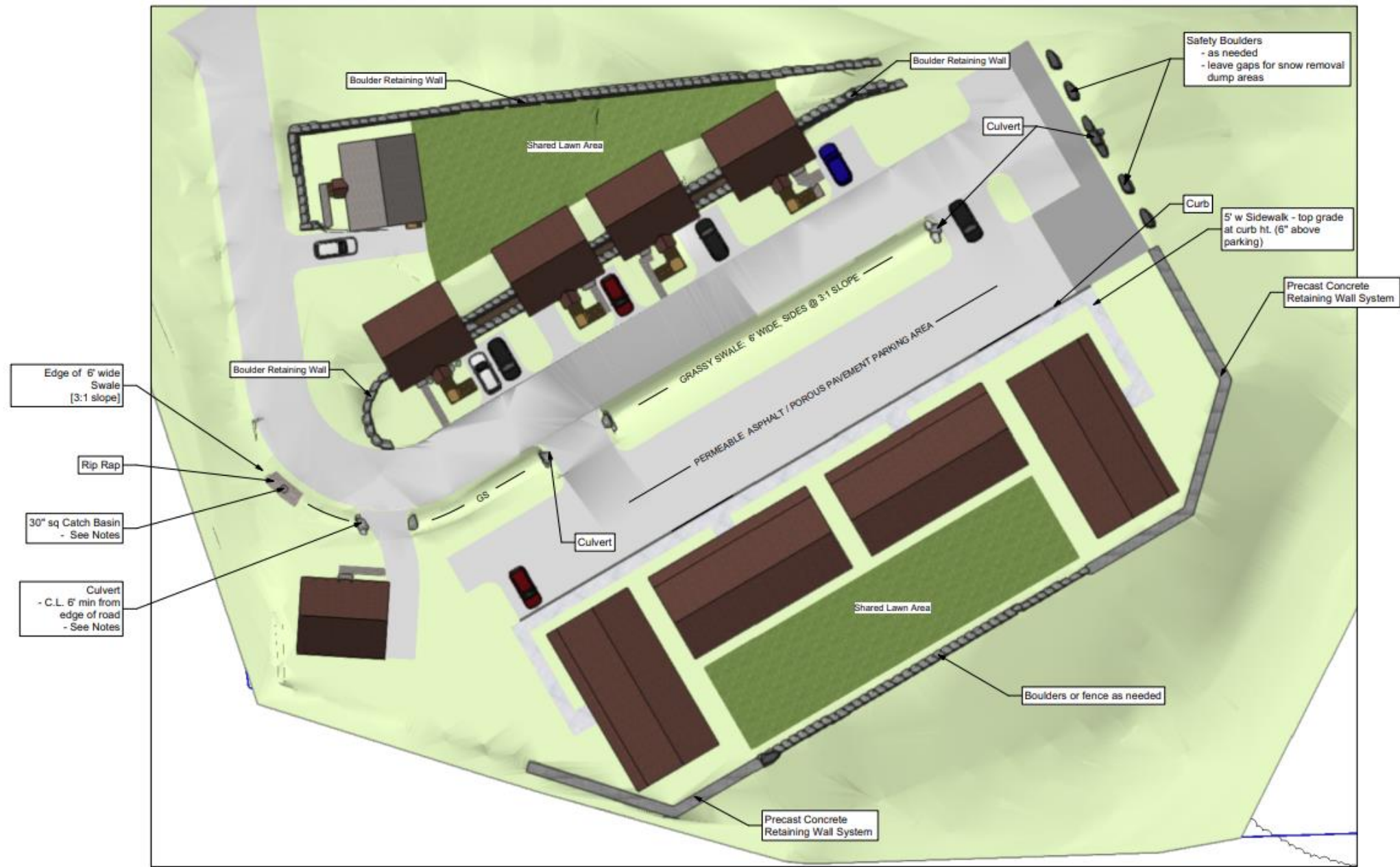


# Progress!



- 6 single family
- 16 town homes (no longer condos)
- 36 applicants – but we need more!







1 House # 1  
Scale: 1" = 10'-0"



2 House # 2  
Scale: 1" = 10'-0"



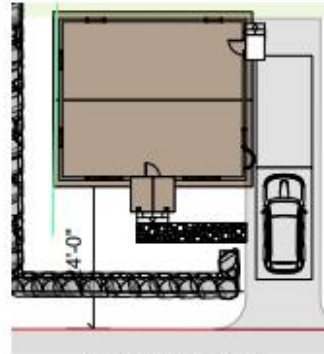
3 House # 3  
Scale: 1" = 10'-0"



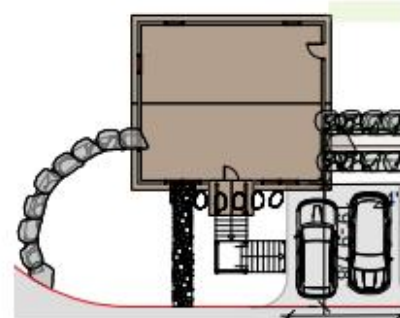
4 House # 4  
Scale: 1" = 10'-0"



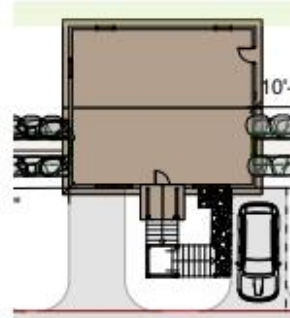
5 House # 5  
Scale: 1" = 10'-0"



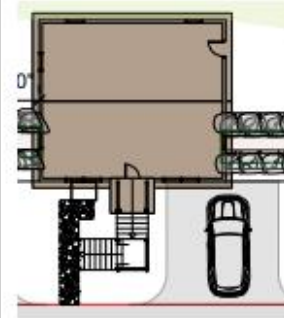
1a House # 1 Plan View  
Scale: 1" = 10'-0"



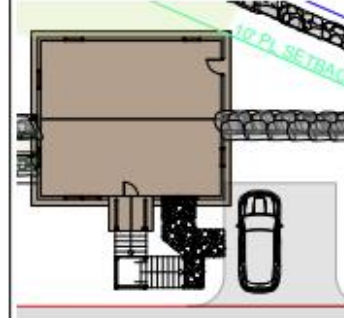
2a House # 2 Plan View  
Scale: 1" = 10'-0"



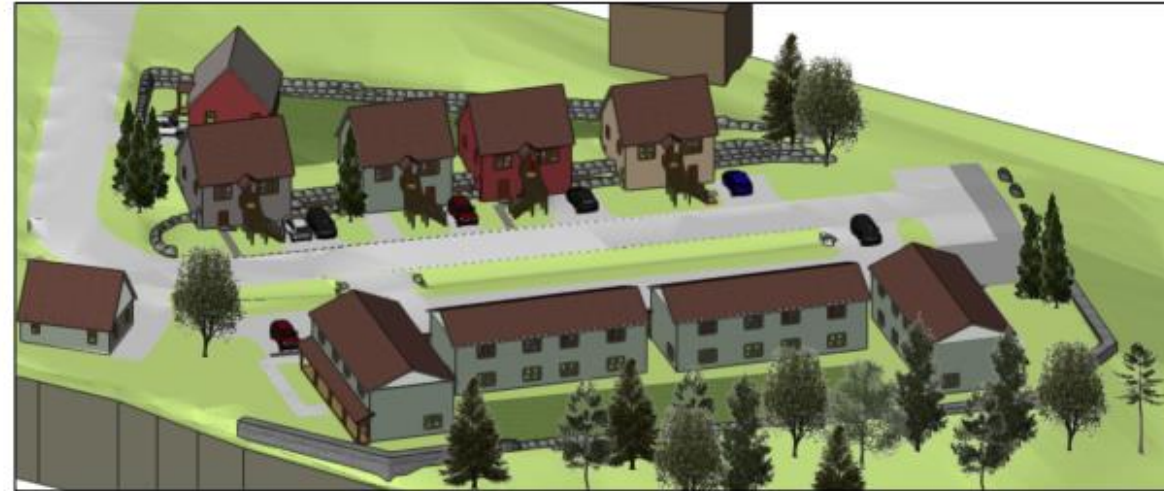
3a House # 3 Plan View  
Scale: 1" = 10'-0"



4a House # 4 Plan View  
Scale: 1" = 10'-0"



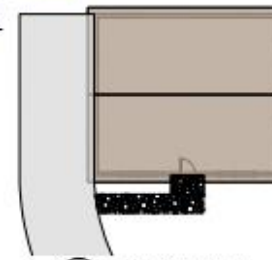
5a House # 5 Plan View  
Scale: 1" = 10'-0"



8 Isometric View  
Scale: 1" = 20'-0"



6 House # 6 Iso View  
Scale: 1" = 10'-0"



6a House # 6 Plan View  
Scale: 1" = 10'-0"



# Current Site Conditions





# Future Town Home Location





# Full Basements (4 walk outs)





## 2 Bedrooms



# Kitchen & Living Space





# Unfinished Upstairs





?WHAT could go here?



# More Info



- [www.homesteadadk.org](http://www.homesteadadk.org)
- [elkilburn@gmail.com](mailto:elkilburn@gmail.com)
- [ssama@homesteadadk.org](mailto:ssama@homesteadadk.org)