

A black and white cow is lying down in a wooden stall, wearing a light-colored straw hat. The cow has a yellow tag with the number '2231' on its ear. The stall is made of dark wood and has a metal bar in front. The background shows the interior of a barn with wooden beams and a window.

# New York Farm Bureau's Role In The Financial Sustainability Of New York Agriculture

Paul Fouts











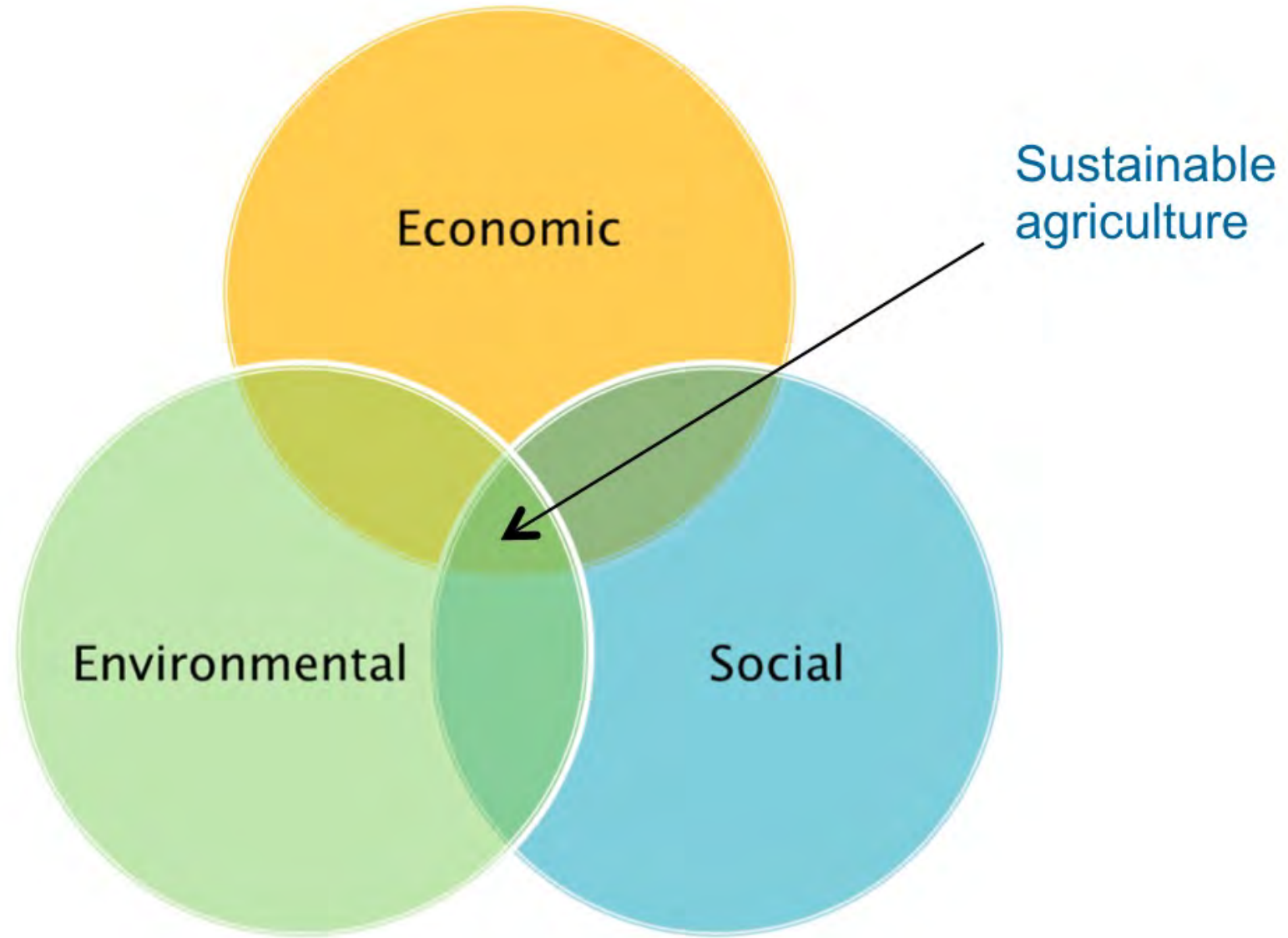




e<sup>®</sup>

R To SERVE OUR MEMBERS







## Brief History

- 1911 Broome County
- 1919 Membership/Cornell
- 1955 Farm Bureau @ Albany  
Extension @ Cornell

*Truly A Grassroots Organization*



County Farm Bureaus

NYFB

AFBF



# NYFB

New York Farm Bureau

public policy

member services

Foundation





# NYFB

New York Farm Bureau

public policy

member services

Foundation

*Serving our Members Since 1967*



New York Farm Bureau  
Member Services, Inc.

## Workers' Compensation Safety Group 486

Take a look at what NYFB Safety Group 486 has to offer.

- NYFB lobbying efforts over the past few years have resulted in an over a 16% average decrease in workers' compensation rates.
- 25% upfront discount
- 32% 5-year average dividend\*
- More than 20 agricultural operations

**Call today for an apples-to-apples comparison quote!**

**NYFB.ORG**

**800-342-4143**

**STARTED BY FARMERS FOR FARMERS**

\* Percentage is based on dividends paid 2013 through 2017. Dividends are not guaranteed. Continued membership in NYFB is required to participate in Safety Group 486. Eligibility for insurance is subject to the New York State Insurance Fund underwriting requirements. NYFB and its subsidiaries have no authority to bind coverage for any member.



# NYFB

New York Farm Bureau

public policy

member services

Foundation



WWW.NYFB.ORG

THE VOICE OF NEW YORK AGRICULTURE

# Grassroots

SEPTEMBER 2018

## Federal Judge's Ruling Puts WOTUS Rule into Effect in New York

A federal judge handed a setback on Aug. 16 to President Trump's effort to delay the implementation of the Waters of the United States (WOTUS) Rule.

The U.S. District Court for South Carolina invalidated the Environmental Protection Agency's applicability rule that looked to hold off implementing the Clean Water Act rule that was put in place in 2015 until 2020. This ruling means WOTUS is in effect in 26 states, including New York. Meanwhile, the EPA is still continuing the process of repealing and replacing the 2015 rule.

On behalf of America's farmers and ranchers, the American Farm Bureau Federation on Aug. 20 asked a federal district court in South Carolina to stay its order. AFBF is part of a broad coalition of industry groups that asked the U.S. District Court of South Carolina to delay implementation of its Aug. 16 order while the groups appeal the court's decision.

According to the filing, the court's decision to strike the delay rule harms the public interest "because the 2015 WOTUS rule was promulgated

**"We call on the administration to take immediate steps to limit the impact of this dangerous court decision."**

— Zippy Duvall,  
American Farm Bureau Federation President

in violation of (procedural requirements), is inconsistent with the text of the (Clean Water Act), and is unconstitutional—as every court to consider the issue has concluded."

The Environmental Protection Agency and Army Corps of Engineers issued the delay rule to provide regulatory stability and consistency while the agencies consider whether to repeal the WOTUS rule.

AFBF and the coalition warn of the "patchwork regulatory regime" created by allowing half the nation.

"Enormously consequential national regulations like the WOTUS rule—which subject farming, and pest management in building, commonplace activities involved in a complex and burdensome federal permitting and enforcement scheme—should not apply differently depending on whether the activity happens to be located on one side of a state line or the other."

The groups will seek a stay from the federal appellate court if the district court denies the request. New York Farm Bureau will provide updates on the implications of the rule going into effect in New York.

Farm Bureau has long opposed the WOTUS Rule and was active with its "Ditch the Rule" campaign. According to American Farm Bureau Federation, the 2015 rule grants the federal government regulatory control over virtually

Continued on page 24

members of the  
more photos of the



AUGUST 2018

Bill

IS

ce



JULY 2018

farmers

the Year

vel faster than 25 miles-per-hour, current limit allowed for the use, SMV sign. By alerting drivers machinery will be going faster, perhaps still not the posted limit, it can help to prevent ts.

nate also passed legislation al hours of session in the Working Farm Act that previously e Assembly. Farms in

Continued on page 29

Freedom Caucus voted against the bill because they felt there were not enough restrictions on adjusted gross income requirements for farmers in terms of crop insurance.

und





New York Farm Bureau

...

Yesterday at 6:55 PM · 🌐

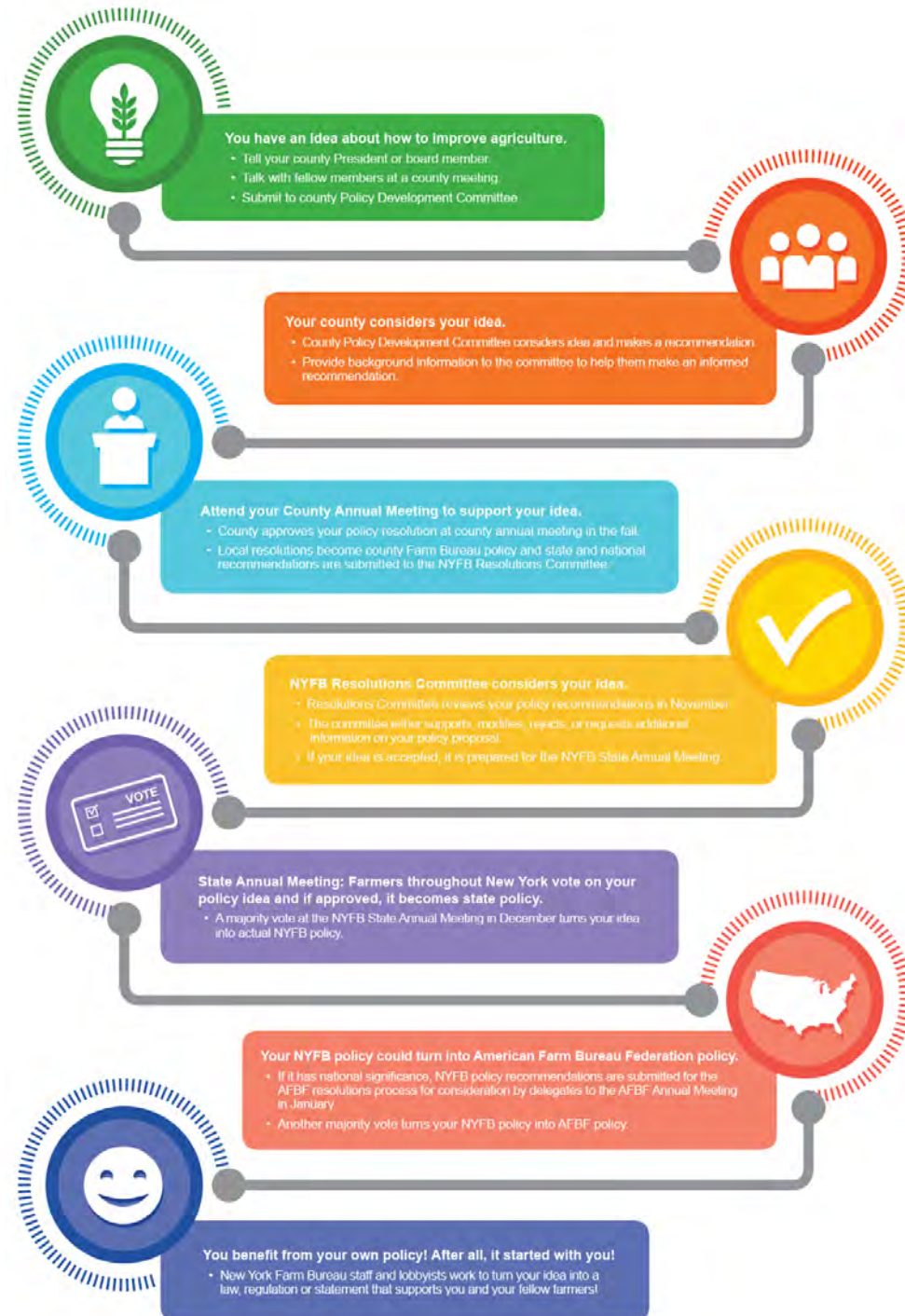
Precision technology and the use of cover crops are ways farmers are getting better at what they do...while also improving soil health and environmental stewardship.



i

AUBURNPUB.COM

**Progress 2019: Cayuga County farm using research to improve production**



# **National Priorities**

- Immigration reform
- Infrastructure
- Trade
- Regulatory reform

# **State Priorities**

- Funding for current promotion, research, and environmental programs
- Oppose unworkable employer mandates
- Funding for critical staff positions in Ag&Markets
- Cost-share tire disposal
- Expand Farm Workforce Tax Credit
- Remove Unemployment Insurance requirements for H-2A workers
- Allow farms with conservation easements to construct necessary farm buildings
- Training for police and DA's on animal cruelty laws
- Research and eradication of tick-borne illnesses

























**I Farm  
I Vote**



**"Having some certainty  
moving forward in  
challenging times is a relief  
for farmers."**

**-President Fisher**





# Questions?

