



The Leawood Rotarian

The Newsletter of the Leawood Rotary Club

Celebrating Over 31 Years!

leawoodrotary.org

April 23, 2026

April 23: Board Meeting



Click link below to launch Zoom

[Launch Meeting - Zoom](#)

Meeting ID: 813 1042 7816

Passcode: Rotary

Looking Ahead to May

Meeting Programs:

May 7: Salvation Army – Xavier Montenegro

May 14: Leawood Chamber of Commerce – Stephanie Meyer

May 21: Chelan David, Author, *Stories of the Phog*

May Invocators:

May 7 – Andrew Pujado

May 14 – Rick Robinson

May 21 – Paul Rueschhoff

May Greeters:

Lisa Harrison (May 7 Captain), Mel Hawk (May 14 Captain),
Mary Jo Holland, Del Karmeier, Don Keith (May 21 Captain),
Lisa May

Last Week...

Darren Lippe received his third Paul Harris Fellow award, and Maria Wilson, District 5710 PolioPlus Chair, discussed the enormous international impact Rotary Clubs have had on eradicating polio.





The Polio Plus Society

As a Rotarian and supporter of Polio Eradication, **Rotary's Number One Priority**,

I wish to participate in the Countdown to History as a member of the

PolioPlus Society of District 5710

I hereby commit to making an annual donation to the PolioPlus Fund of The Rotary Foundation as follows (select one):

- \$100 USD **per year** (minimum amount to become a society member)
- A contribution of \$_____ per year to PolioPlus (more than \$100)

Optional Lapel Pin: Yes ___ No ___

I pledge to help Rotary make history by continuing to contribute the above amount each year until the World Health Organization certifies that polio has been fully eradicated because ...

Until the world is polio-free, every child is at risk.

Society members will receive a PolioPlus Society Membership Certificate and, if requested, the Society Lapel Pin....and your contribution qualifies for Paul Harris Recognition Points credit.

To make your tax-deductible donation write a check to your Club's Foundation with Polio Fund noted. Or go to my.rotary.org/donate and click on "Polio Fund". You can choose a one-time donation of \$100 or more, or a recurring donation in the amount and frequency of your choice (We suggest \$10/month as the "easy way" to become a PolioPlus Society member.)

Name (please print) _____

Email Address _____

Member ID: _____ Club Name _____

Signature _____ Date _____

Please provide a copy of this form to your club's Foundation Chair. Then scan & email form to **Maria Wilson, PolioPlus Chair, Maria4PolioPlus@gmail.com** or mail to 3718 SW Stonebridge Ct, Topeka KS 66610. Your PolioPlus Society certificate and pin will be presented at a club meeting to make sure you are recognized for your commitment to polio eradication.

Project C.U.R.E. – April 11

Several Rotarians, family and friends gathered at the caves to sort and package medical items that Project C.U.R.E. will send to various locations. Like their mural says, “We can do great things together.”



Project C.U.R.E. – April 11



Rotarians in the News

NONPROFIT

Promotion



Milca Aguirre

Big Brothers Big Sisters Kansas City
Donor Engagement Manager

Milca has been promoted to Donor Engagement Manager at Big Brothers Big Sisters. Since joining BBBS in 2022 as a Brand Ambassador, she has connected volunteers, partners, and supporters to the mission. A former Big Sister, Milca combines authentic relationship-building with deep passion for the work, making her a natural fit to partner with individuals seeking to make a meaningful financial impact.

Rotarians in the News



School of Engineering

Civil, Environmental & Architectural Engineering



Believed to be the first three-generation family in the history of KU's CEAE department, the Gibbs family's connection to KU Civil Engineering dates back to the 1960s. With careers in public service and contributions to infrastructure and site development in the Kansas City area, the family has been planning and designing parts of Kansas City for the last 60 years.

Following duty in the U.S. Public Health Service, Phil Gibbs Sr. founded Continental Consulting Engineers in 1976, and currently operates offices in Leawood and Kansas City, Kansas. The engineering firm is family-founded and family-operated.

"Having a family business is the American dream and is just the best," said Phil Gibbs Sr. "The family deeply cares about the quality of services provided to clients as well as the success of the people we employ."

Continued...

Rotarians in the News

His son, Phil Gibbs Jr., is an integral part of Continental, as is his daughter, Susan, and his wife, Kathy. Phil Jr.'s early summer internships started with painting of the office walls as the business expanded into additional office space. He later assisted on the land surveying crew, which came in handy when it came time to take the Surveying class at KU and led to him being asked to teach the laboratory portion of that class for five semesters as an undergraduate student.

Since joining the company full-time in 1994, Phil Jr. has worked to create iconic landmarks in the Kansas City area, and that work has transformed and created a

lasting impact. "We helped the community win the speedway for the state of Kansas when there was a competition for it to perhaps be built in Missouri. We provided the City of Kansas City, Kansas, with support related to existing infrastructure capacities, project siting, and cost estimating assistance to determine the viability of the project. These quick services helped win the project for KCK and Kansas," said Phil Gibbs Jr. "The Village West tourism district, which we designed as a result of Kansas Speedway coming to the area, now represents over 10% of the property value of Wyandotte County."

Phil Jr.'s daughter, Mandy Gibbs, is currently a senior in CEAE and is the latest addition to the Gibbs generations. She has grown up around civil engineering and the projects Continental designed.

"I went into civil engineering because of my dad and grandfather," said Mandy Gibbs. "I grew up watching them work on projects, hearing their discussions about infrastructure design, and visiting sites as they opened. I found it fascinating that they were working on something on paper, and then you could see its impact in real life."



Phil Gibbs, Jr.

Continued...

Rotarians in the News

As the current president of the KU American Society of Civil Engineers student chapter, Mandy Gibbs is honing her leadership skills, but takes the most pride in increasing student engagement numbers and mentoring younger members. “The past few years, we’ve seen an increase in membership, interest in attending meetings, and competing at the annual Mid-America ASCE Symposium,” said Mandy. “It’s really been fun to see how everyone enjoys ASCE. Each time I’ve attended the Symposium competition, it’s been wonderful to see how the younger members get excited about Civil Engineering the same way I did as an underclassman. Now, serving as a mentor to some of our younger members has been rewarding and a tribute to those older members who guided me.”



Mandy Gibbs

For Mandy, civil engineering is a rewarding experience since it shapes the infrastructure people depend upon every day. “As civil engineers, you have a direct impact on citizens of society and the community around you,” Mandy Gibbs said. “I think it’s really cool that we help design and build infrastructure that the public utilizes daily.”

Phil Gibbs Sr. describes civil engineering similarly: “Civil engineering follows orderly design requirements and codified laws for the protection of the public.”

With plans to earn a master’s in civil engineering and a future in her family’s business, Mandy Gibbs is planning for a career path that blends education, ambition, and tradition. “I look forward to working with my dad and grandpa eventually,” said Mandy. “Right now, I’m planning on attending graduate school for the next couple of years to earn a master’s in civil engineering with a transportation emphasis.”

Continued...

Rotarians in the News

This complements well the existing Gibbs family education with Phil Gibbs Sr. earning his Master's in Civil Engineering with an emphasis in Structures and Phil Jr.'s earning his Master's in Environmental and Water Resources Engineering.

"My proudest accomplishment is that Mandy's going to follow in my footsteps," said Phil Gibbs Jr. "When you have kids, that's what you dream of. My other objective is to use my talents to do good things for my community, which I feel like I have done."

The lineage of civil engineers in the Gibbs family highlights their dedication to their Kansas City community, and their influence has helped shape infrastructure for the community's good. And it is a direct result of the CEAE department at the University of Kansas.

PLEASE NOTE:

There will not be a newsletter next week since there will be no meeting. I hope to see you at Discover O.P. for our Fifth Thursday Social. The newsletter will resume in May, along with more Leawood history!

April 30 Fifth Thursday Social Event

Discover O.P.

5:00 – 7:00 p.m.

8001 Santa Fe Dr., Overland Park, KS

Send your RSVP to Anita Williams no later than Monday, April 27.

abwilliams59@gmail.com

Save the Date!

Leawood Rotary Social Event

Thursday, April 30, 2026 – 5 p.m. to 7 p.m.

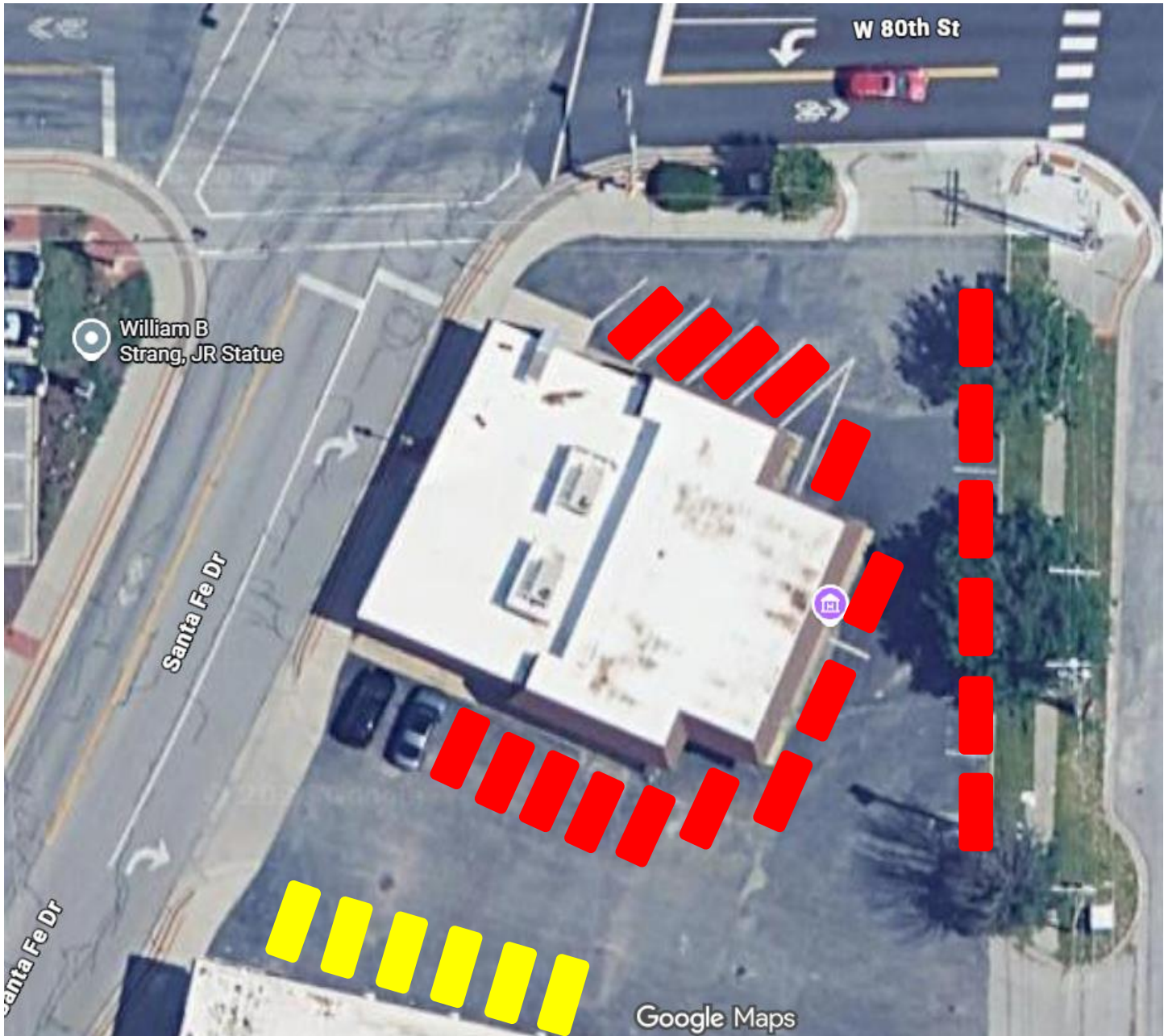


- *Food & Beverages provided!*
- *See the newest attraction in Downtown O.P.!*
- *Details to come.*

Discover O.P. - 8001 Santa Fe Drive, Overland Park, KS

Parking:

We are very fortunate to have off-street, private parking around our building. There are enough spaces for 22 cars (see red spaces below). I think we should reserve the spaces on the north side of the building, closest to the entry, for those who have mobility issues.



If the bridal store to the south of our building is not having an event Thursday evening, you can also park along the north side of their building (see yellow spaces above). I will confirm and let everyone know if this will be available to us. **PLEASE DON'T PARK HERE UNLESS I TELL YOU IT IS OK, OR YOU MAY BE TOWED.** Stay tuned!

Additional Off-Site Parking

In the event our lot is full, there is plenty of open public parking along Santa Fe Drive and Overland Park Drive (see orange spaces below). There is also a multi-level parking garage on 81st Street that has hundreds of spaces and is open to the public at 4:30 p.m. It is a short walk from this garage to Discover O.P.



TOURS: I will be giving a series of tours every 15 minutes for groups of up to 10. The goal is to keep any area from becoming too congested and the food area manageable. Looking forward to seeing everyone!