

McHenry County Snapshot

Poverty Statistics:

23,256 or 7.6% - residents living in Poverty (*US Census 2014*)

23,380 or 7.6% - food insecure residents (*Map the Meal Gap 2016*)

12,820 or 16.0% - food insecure children (*Map the Meal Gap 2016*)

\$22.62/hour or \$47,040/annual - wage needed to rent a 2 bedroom apartment (*National Low Income Housing Coalition*)

110 hours/week at minimum wage to afford a 2 bedroom apartment (*National Low Income Housing Coalition*)

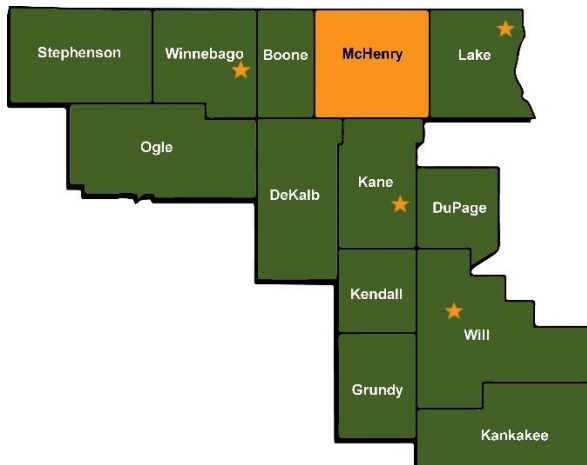
Meeting the Meal Gap:

3.9 million meals distributed in FY16:

- 1.5 million meals distributed through our retail store donation programs
- 1.9 million meals distributed to food pantries
- 434,369 meals distributed through the Food Bank's programs (such as youth and senior programs)

Northern Illinois Food Bank's network partners:

- 23 Food Pantries
- 2 Soup Kitchens
- 11 Backpack Programs
- 1 Senior Site
- 19 Youth Program Sites
- 14 Group homes/shelters
- 2 Daycares



Here is a snapshot of who Northern Illinois Food Bank serves in McHenry County (Hunger Study 2014):

- 29,800 people are served annually
- 4,100 people are served weekly

AGE

- 40% are children under age 18
- 14% are adults from age 18-29
- 24% are adults from age 30-49
- 13% are adults from age 50-64
- 9% are seniors age 65 and older

POVERTY

- 59% of households have incomes that fall at or below the federal poverty level

HEALTH

- 66% of households have unpaid medical bills
- 57% of households report at least one member with high blood pressure
- 27% of households report at least one member with diabetes

EMPLOYMENT

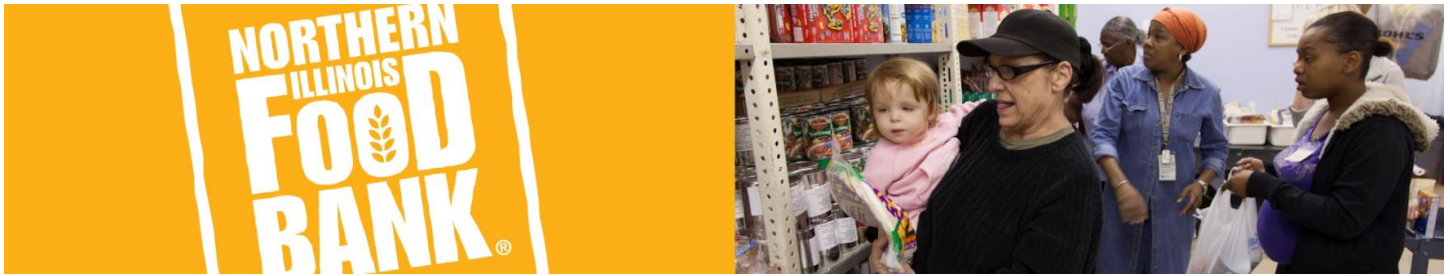
- 68% of households have an adult member that worked for pay in the last 12 months
- 32% of households did not have employment in the past 12 months, but these households include those with members who are retired, disabled, in poor health or caretakers

SPENDING TRADE-OFFS

- 90% of households chose between paying for food and transportation in the past 12 months.
- 87% of households reported they had to choose between paying for food and utilities in the past 12 months
- 75% of households chose between paying for food and paying for medicine at least once in the past 12 months
- 72% of households chose between paying for food and paying their rent or mortgage at least once in the past 12 months

Feeding Our Hungry Neighbors

WWW.SOLVEHUNGERTODAY.ORG



McHenry County Network Members

Food Pantries

Algonquin/Lake in the Hills Food Pantry
 Brown Bear Day Care & Learning Center FP
 Cary Grove Food Pantry
 Casa De Vida
 Crystal Lake Food Pantry
 Faith Acres Foundation Food Pantry
 FISH of McHenry
 Grafton Food Pantry
 Harvard Community Food Pantry
 Harvest Bible Chapel - Crystal Lake
 Hebron Community Food Pantry
 Helping Hands Food Pantry
 Loaves + Fishes - Crystal Lake
 M.O.R.E. Center
 New Life Pentecostal Church Food Pantry
 Salvation Army Crystal Lake
 St. Vincent DePaul Society - McHenry
 The Manger Food Pantry
 Transitional Living Service
 Wonder Lake Church of God
 Wonder Lake Neighbors Food Pantry
 Woodstock Bible Church Food Pantry
 Woodstock Food Pantry

Soup Kitchens

First United Methodist Church Community Meal
 Woodstock Bible Soup Kitchen

Senior Programs:

The Chapel

Child Nutrition

Canterbury Elementary (BackPack)
 Creekside Middle School (BackPack)
 Coventry Elementary (BackPack)
 Crosby Elementary (BackPack)
 Dean Street Elementary (BackPack)
 First United Methodist Church (SFSP)
 Garden Quarter Neighborhood Resource Center (CACFP, SFSP)
 Greenwood Elementary (BackPack)
 Harvard Methodist Church (SFSP)
 Ladd Park (SFSP)
 Marengo United Methodist Church (CACFP, SFSP)
 Mary Endres Elementary (BackPack)
 McHenry Public Library District (SFSP)
 North Elementary (BackPack)
 Olson Elementary (BackPack)
 Pioneer Center for Community Mental Health (SFSP)
 Prairiewood Elementary (BackPack)
 Westwood Elementary (BackPack)
 Wonder Lake Food Pantry (SFSP)

Other

Brown Bear Day Care & Learning
 McHenry Co. Pads Day Shelter
 McHenry Co. PADS Transitional
 Pioneer Center (12 locations)
 SAGE YMCA Early Learning Center