



Medical Cannabis in Illinois

Presented by Kirsten Velasco

Covering:

Medical Conditions
Patient Experience
Science & Biology
Laws and Politics

Deaths in the US per year (cdc.gov)

480,000: Tobacco

88,000: Alcohol

47,055: Drug Poisoning

Cannabis: 0

- Patients report needing lower doses and less prescription medicines.
- Deaths from opioid overdose dropped 25% in states with Medical Cannabis

Addictiveness:

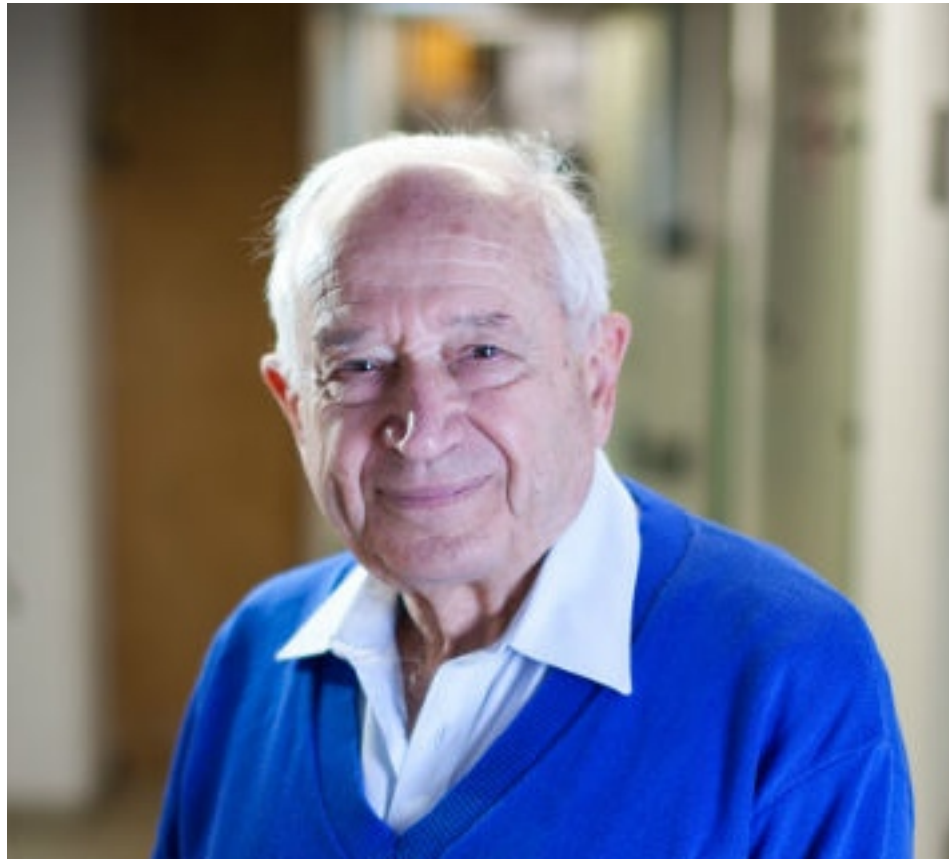


=



**Cannabis has always been medicine.
Used extensively as medicine in the US until 1937**





Dr. Raphael Mechoulam
“The Scientist” Documentary
U.S. funded his research for 45 years

Search Pubmed.gov for Cannabinoid = 21,270

United States Patent #6630507
Cannabinoids as Antioxidants and Neuroprotectants

Reduces brain damage from Traumatic Brain Injury
Slows the progression of Parkinson's



Cannabis is federally illegal.
DEA classifies cannabis as a Schedule I substance:
"having no medicinal value"

FDA: Marinol – Synthetic THC



- **Over 28 States**
- **Medical Cannabis Pilot Program**
- **Compassionate Care Act**
- **Set to Expire July 1, 2020**
- **Approx. 13,000 patients**

AIDS/HIV
ALS
Alzheimer's
Arnold-Chiari Malformation
Cachexia/Wasting Syndrome
Cancer
Causalgia
Crohn's Disease
CRPS: Complex Regional Pain
Syndrome I & II
Demyelinating Polyneuropathy
Dystonia
Fibromyalgia
Fibrous Dysplasia
Glaucoma
Hepatitis C
Hydrocephalus
Interstitial Cystitis
Lupus
Multiple Sclerosis
Muscular Dystrophy

**Patients must be diagnosed with one
of these qualifying conditions:**

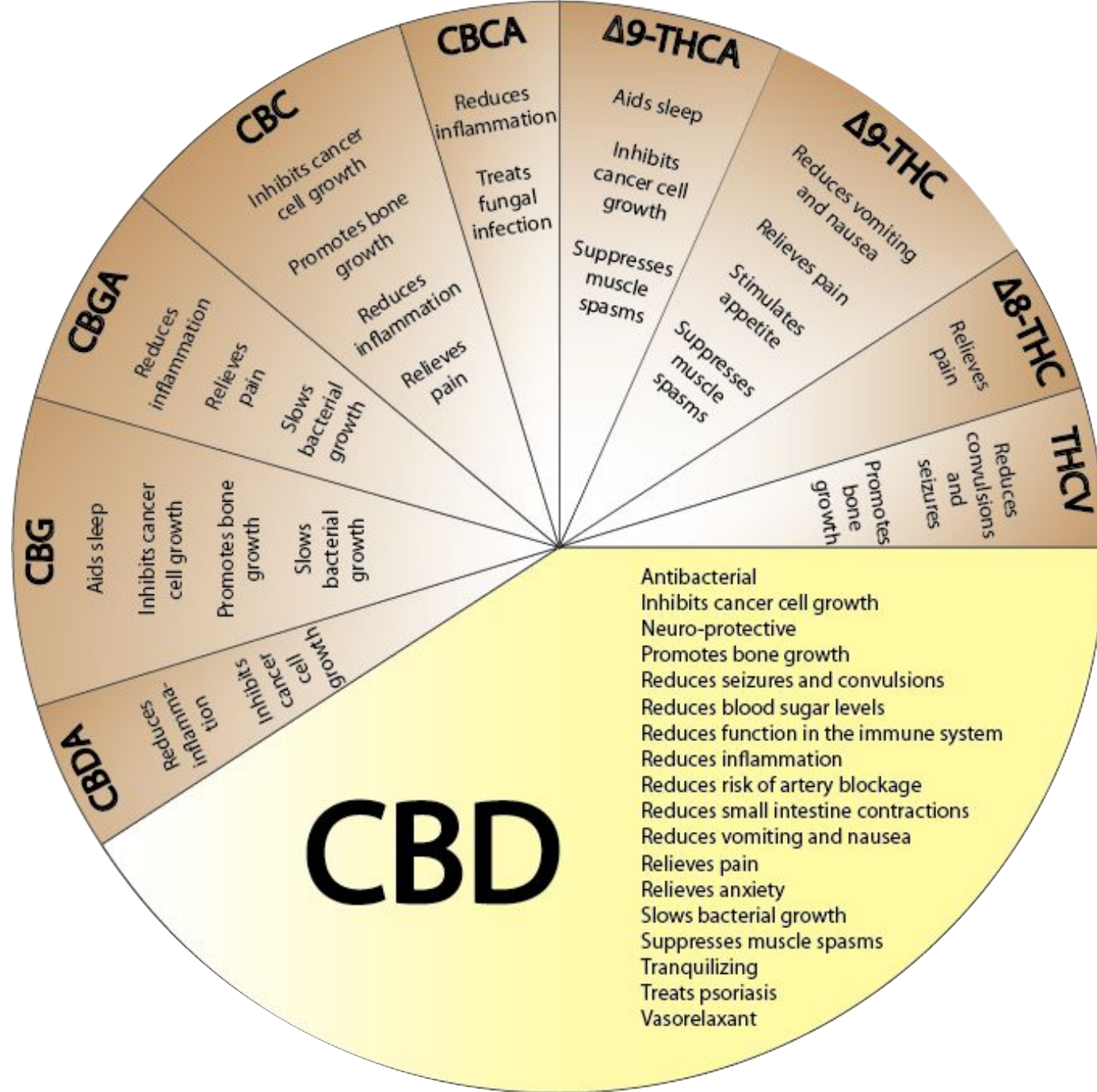
**Patients Petition in January to add conditions
Blocked twice by Governor Rauner.
Conditions are being added by court order.**

Myasthenia Gravis
Myoclonus
Nail-Patella Syndrome
Neurofibromatosis
Parkinson's Disease
Post-Concussion Syndrome
Post Traumatic Stress Disorder
Residual Limb Pain
Rheumatoid Arthritis
Seizures including Epilepsy
Sjogren's Syndrome
Terminal Illness
Tourette's Syndrome
Traumatic Brain Injury
Spinal Cord Disease, including but not
limited to:
Arachnoiditis
Tarlov Cysts
Hydromyelia
Syringomyelia
Spinal Cord Injury
Spinocerebellar Ataxia

- Compounds similar to Plant Cannabinoids
- Intercellular Communication System

ECS: Endocannabinoid System

- Promotes Balance and Stability
- Plant Cannabinoids can assist the ECS
- Discovered in 1992



- **CBD neutralizes the psychoactive effect of THC**
- **THC benefits: anti-nausea, anti-pain, anti-inflammatory, anti-spasticity, appetite stimulant**
- **Entourage effect: natural mix enhances effectiveness**
- **Terpenes: create the smells and have strong influence on effects**
- **Patients adjust ratio of CBD and THC to maximize benefits**

Parkinson's: calms tremors

Multiple Sclerosis: relaxes muscle spasms

Crohn's: reduces inflammation

PTSD: reduces anxiety

Cancer: anti-tumoral & treats side effects of chemo

Review!

Cannabis is:

Non-Toxic

Anti-Inflammatory

Neuroprotectant

Treats Chronic Pain

Many active components

Customizable

Great! How do I get it?!!

Three Steps to Access Medical Cannabis in Illinois:

Doctor's Certification:

Doctor sends form to State that verifies qualifying condition

Patient Application: Printed or Online

Proof of Residence: current document w/ name and address

Copy of Driver's License or State ID

2x2 picture

Digital Fingerprint Scan:

Consent form and receipt

Fees: 1 yr.~ \$100, 2 yr.~ \$200 3 yr.~\$250

\$50/100/125: SSDI, SSI or Veterans

*Veterans don't need Dr. certification: send form DD214 with application

\$25/50/75 for a Caregiver

Minors: 2 Dr. Certs & Parent is Caregiver

Dispensary Designation for tracking amount of medicine purchased.

2.5 oz. per 14 days unless adjusted by doctor

Methods of Consuming Medical Cannabis

- Inhalation: Smoking or Vaporizing

- Sublingual

- Edible

- Lozenge

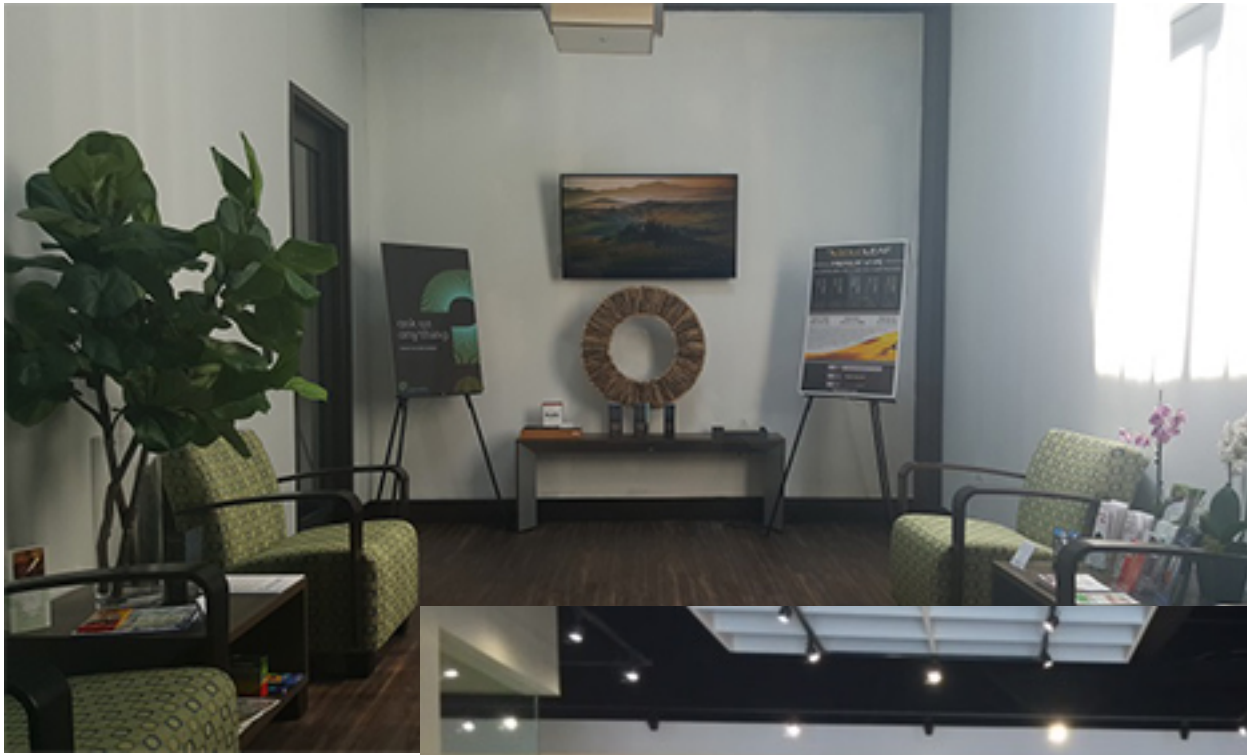
- Topical

-





Coltyn Turner, Originally from Jerseyville, IL





NON-TOXIC

Cannabis is a non-toxic anti-inflammatory that can treat chronic pain and many other conditions.

You can join an organization that is already helping patients!! Thank you!



Help yourself and others discover the health benefits of medical cannabis.

Schedule a medical cannabis presentation for your friends and family.



Illinois Medical Cannabis on Facebook





MEDICAL CANNABIS OUTREACH

224-281-0888

Pharma-style Cannabis Companies:

GW Pharmaceuticals

OWCP ~ Israel

Zynerba

Tweed/Bedrocan (Canopy Growth Corp.)

Kalytera (California)

Insys Therapeutics

Cannabics/Technion

Vireo Health

AXIM Biotechnologies

FAQs:

- 1) FOID & CCL
- 2) Insurance Coverage
- 3) Employment
- 4) Cancer Treatment
- 5) CBD only
- 6) Driving Under the Influence
- 7) Dosing



Medical Cannabis in Illinois

Presented by Kirsten Velasco

Covering:

Medical Conditions

Patient Experience

Science & Biology

Laws and Politics



Traditional Pharmaceutical Cannabis Medicines:

GW Pharmaceuticals



Sativex: CBD & THC

In 29 Countries for MS (pain and muscle spasms)

Not available in the US

OWCP ~ Israel

Zynerba

Tweed/Bedrocan (Canopy Growth Corp.)

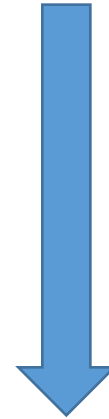
Kalytera (California)

Insys Therapeutics

Cannabics/Technion

Vireo Health

AXIM Biotechnologies



Epidiolex: 98% CBD from plant (not synthesised)

Completion of phase 3 trials in US for Dravet and Lennox Gastaut

Optimizing Cellular Function

Endocannabinoids: AEA & 2-AG (200+ similar compounds) & Phytocannabinoids: (from the plant)

Stimulate the expression of receptors on the surface of the cells.

They also trigger and modulate the receptors: Agonists and Antagonists

Anti-tumoral and Apoptosis:

Cancer Treatment

Not just palliative care

Phytocannabinoids (THC & CBD) trigger the cells natural expiration

Triggers the thinning and permeability of the cells surface,
causing the escape of the mitochondria

Mara Gordon ~ Aunt Zelda's, colorado

Dr. Christina Sanchez ~ University Complutense Madrid, Spain