



THE WINDJAMMER

More online at [Facebook.com/JuneauRotary](https://www.facebook.com/JuneauRotary) or www.JuneauRotary.org

UPCOMING

July 15

Weekly Meeting
DG Dick Sutliff;
Board Meeting
tonight @ 5:15PM

July 17

Shelter Box
Presentation
Nancy Dodge
Noon/The Baranof

July 19

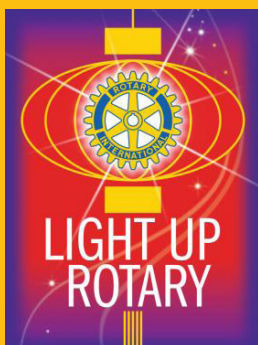
ROWDY ROTARY
REUNION
Noon/Sandy Beach

July 22

Chief of Police
Bryce Johnson



2014-2015 Rotary
International Theme:



This Week's Program:

District Governor Dick Sutliff



Dick Sutliff's Rotary career began in 1965 as a high school representative to the Rotary club of Kodiak, Alaska. At college he earned a Bachelor of Science degree and Lieutenant's bars, followed by a Masters degree in mathematics and a Law degree.

Back to Alaska in 1981, he sought out and joined the Rotary club of Anchorage. The club elected him president in 1993. One of his club projects built a public recreational cabin in Chugach State Park.

He hosted four exchange students that helped raise his son Christopher, who in turn was an exchange student to Germany.

Dick served as vice governor for three district governors during the era when Russia east of the Ural Mountains was part of district 5010. He also participated on several district conference planning committees, taught at PETS, helped select district governors, and was a member of the district youth exchange committee.

For thirty-five years Dick was a solo civil defense lawyer. Trials took him across the state from Nome in the arctic to Adak at the end of the Aleutian Chain to Ketchikan in the southeastern panhandle. And he successfully and without charge tutored over twenty people who had failed the bar exam.

Dick was a board member and president of Arts Alaska and of the Anchorage library advisory board. He is a long-standing board member of the Alaska Aviation Museum. As an assistant scoutmaster he helped train six Eagle scouts.

Dick's wife, Dr. Page Spencer, is an ecologist who recently retired as the chief of natural resources for Lake Clark National Park in Alaska. They are both bush pilots and spend as much time exploring the Great Land as weather permits. They live a semi-subsistence life-style: hunting, fishing, gathering, and cutting wood to heat their home.

Recap of Last Meeting

July 8 we had Committee Speed Dating to review what the club committees do...



ROTARY CLUB OF JUNEAU BOARD

2014-2015

President

Karen Morgan

Immediate Past President

Brenda Hewitt

President-Elect

John Blasco

Vice President

Bridget Lujan

Secretary

Robyn Long

Treasurer

Armando Deguzman

Administration

Sally Saddler

Community Service

Sharon Gaipman
Barbara Propes

PR/Communications

Andy Mills

Foundation Chair

Ann Metcalfe
Karen West

International Service

Warren Russell

Membership

Ruth Kostik

Youth Service

Caitlyn McLaughlin
Virginia Stonkus

Vocational Service

Ruth Hamiton Heese

Club Reminders

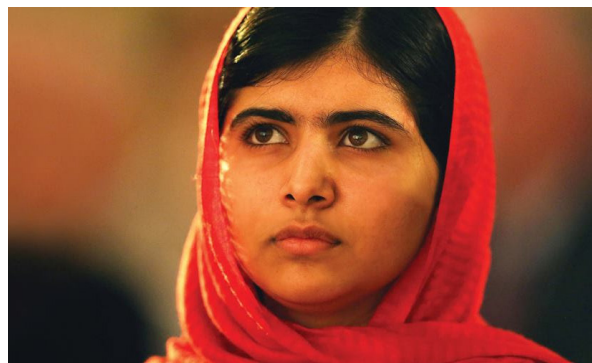
Come out for some summer fun! Join your fellow Rotarians, families and friends for this year's **Rowdy Rotary Reunion** beginning at noon on July 19th. This year's is being coordinated for our club by Millie Ryan who is handling this for our club and can give you all the particulars!

Board meeting with DG Dick Sutliff this evening, July 15, starting 5:15PM at the Westmann and Associates office at 226 Seward Street (downtown).

Tickets for our **3rd Annual Capital Brewfest** are now available online, \$30 dollars for a drink ticket and \$5 for non-drink (designated driver) ticket. United Way of Southeast Alaska was selected as this year's charity partner for the event and brew crew is busy planning the event - contact John Blasco if you'd like to participate.



Rotary Spotlight - Malala is One of Us



The Swat Valley of northern Pakistan, in the highlands between Kashmir and the Khyber Pass, was once a lush, peaceful place. It was ruled by Miangul Abdul Haq Jahanzeb – the Wali, or absolute monarch, of Swat. A modernizer, the Wali built schools for his subjects – girls as well as boys – and toured remote regions where no one had ever seen an automobile. On one trip, the villagers tried to feed hay to his Cadillac. Zebu Jilani recalls the land of her childhood: “A beautiful, pristine place where mountains climbed to the clouds. People called it the real Shangri-La.” The Wali was her grandfather. Princess Zebu, as Swatis still refer to her, recalls playing with shiny rocks that resembled chunks of green glass. “They were emeralds from my family’s mines.” Then, in 1969, Swat relinquished its sovereignty to the government of Pakistan. So began a 40-year period of decline that led to the rise of the Taliban in 2008. For two years, the people of Swat endured a reign of terror as the Taliban imposed their brutal version of Islamic law. They rounded up political opponents, beheaded some and flogged others. They held public executions, beat women, blew up schools.

Read full story online at <http://therotarianmagazine.com/malala-is-one-of-us/>

Thanks to AK Litho/CopyWorks, for printing The Windjammer!