



Award Winning

Malibu Rotary Club Surfwriter

March 2, 2011

**Official Newsletter of the Rotary Club of Malibu
Malibu Rotary Club President Christopher Bauman**

**Edited by Dr. John W. Elman
Pictures by Dr John W. Elman**

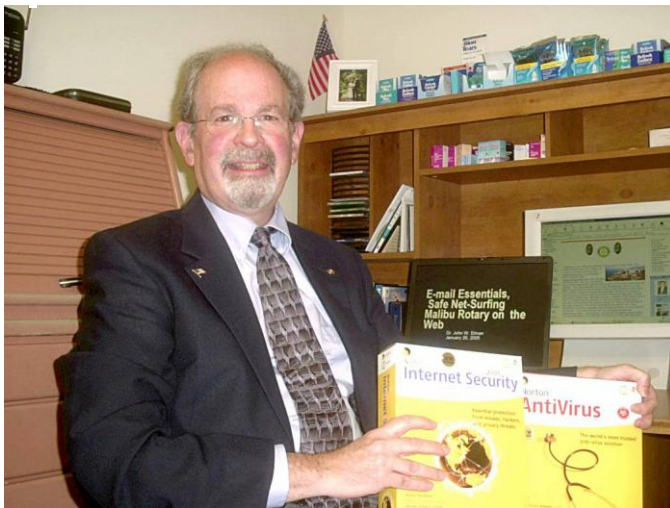
In This Issue (click underlined topics for web link when connected to the Internet)

- **Last week: Webmaster John Elman Reports on Updates and Navigation on Malibu Rotary's ClubRunner website MalibuRotary.org**
- **Next regular Malibu Rotary Club Meeting will be Wednesday, March 9th at 7:30 a.m in the Pepperdine University Fireside Room. Speaker will be Jonathan Friedman, former *Malibu Times* reporter who now is editor of the online Malibu news source malibu.patch.com. .**
- **Other News and Guests from Last Malibu Rotary Club Meeting**
- **Malibu Rotary Club Supports BioSand Filters in Ecuador**
- **Check Calendar on Malibu Rotary website MalibuRotary.org**
- **Malibu Rotary Club Website: www.MalibuRotary.org**
- **Rotary International Website: www.Rotary.org**
- **Rotary District 5280 Website: www.rotary5280la.org**

- Rotary District 5280 “Rotarians Doing Business With Rotarians” Website: <http://yp5280.org/>
- [RI President \(2010-2011\)](#) Ray Klingensmith
- Rotary District 5280 Governor (2010-20 11): Doug Baker

Updates and Navigation on Malibu Rotary’s ClubRunner website: MalibuRotary.org

by
John W Elman



Malibu Rotary has had a website since 2001, when I created a Malibu Rotary MSN Group site. When Microsoft stopped these free web sites suddenly in 2009 (and 300 great Rotary pictures disappeared into cyber oblivion) I encouraged the club to join most of the other Rotary Clubs in District 5280, and many clubs around the world, and use the ClubRunner format to host a new website. We registered and bought the domain name MalibuRotary.org and paid Doxess.com in Canada, the

parent company of ClubRunner, to have a website which not only provides information to members and the public, but allows for certain administrative reports and communications between clubs, the district, and Rotary International.

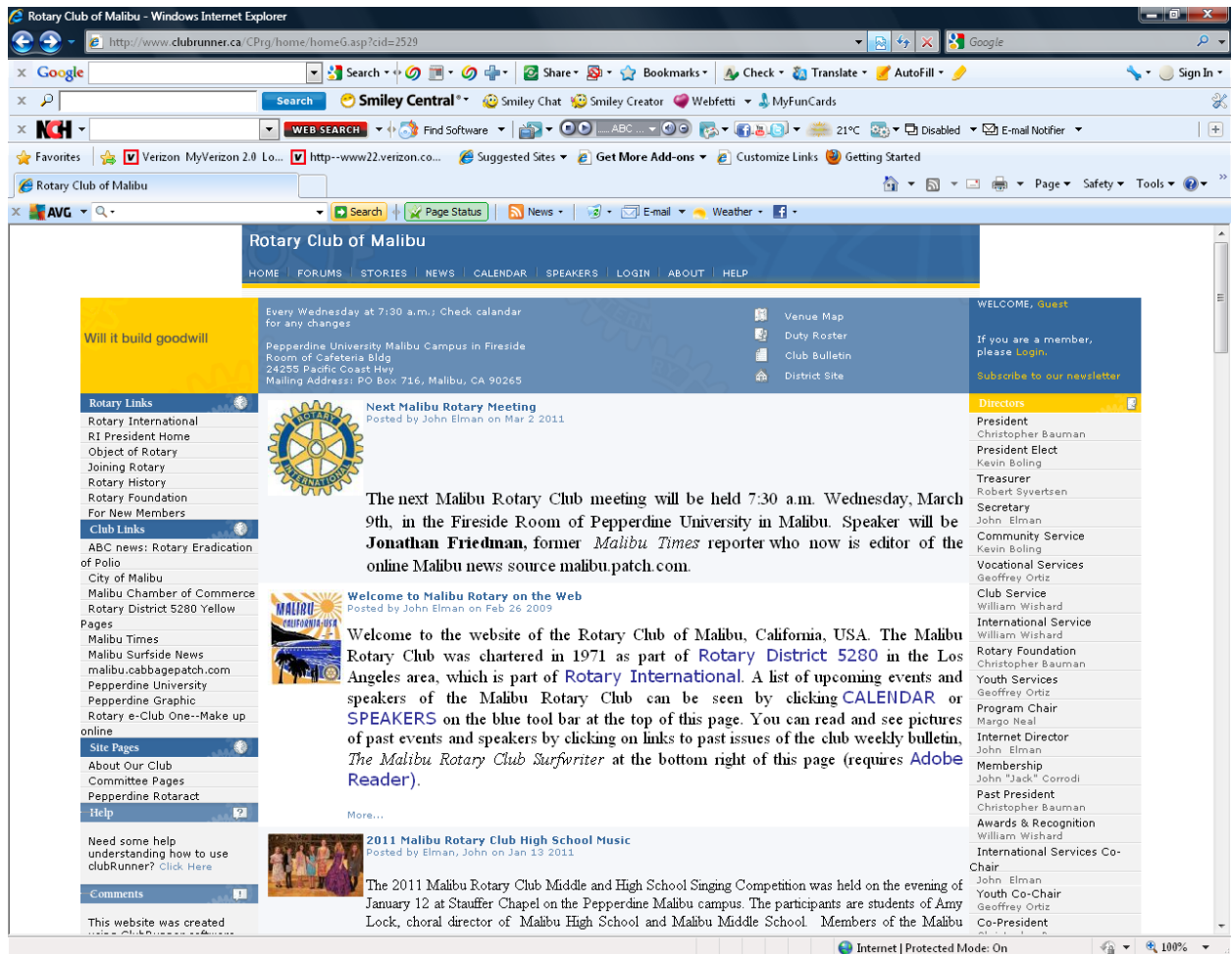
ClubRunner is updated by Doxess regularly, and is constantly adding new features. I was going to make a report about the updates at a club meeting on March 2, 2011, but because of time constraints, barely touched the surface of what the Rotary ClubRunner site is and what it can do. I have decided to go into more detail here, and post this story, originally written in the *Malibu Rotary Club Surfwriter*, on the MalibuRotary.org website, to serve as a reference, for those who have questions about navigating the site.

I will divide this discussion into two parts: 1. **The Front End** (the public non-secure site) and 2. **The Back End** (the private secure site).

1. **The Front End** (the public non-secure site)

The Front End (public non-secure) part of MalibuRotary.org is the very large home page, which everyone sees when they type or copy *MalibuRotary.org* into their computer browser’s address bar when connected to the Internet. Whether you use Internet Explorer, Mozilla FireFox, Apple Safari, Google Chrome, or your mobile phone browser you should be able see The Front End

home page the same way when connected to the Internet. It is accessible to everyone in the world without special login, membership, handshake, or hidden link. It is the club billboard out there for public view. A screen shot of MalibuRotary.org home page as seen on March 2,2011 is printed below.



Notice that the address bar shown in the browser in the gray area across the top of the screen does not have <http://maliburotary.org> but <http://www.clubrunner.ca/CPrG/Home/homeG.asp?cid=2529>. This is because as soon as you put in maliburotary.org it is forwarded to the clubrunner site reserved for the Malibu Rotary Club in Canada, which has been assigned the id of 2529.

The top, left, and right margins of the home page have multiple links to web pages both on the ClubRunner site, and many other websites.

You can think of the left and right margins as two of three columns down the page, with the center column being wider, with narrower columns on either side.

There are headlines, pictures and stories down the center wider column. The top story in the center column is **Next Malibu Rotary Meeting**. This will always show where and

when the next Malibu Rotary Club meeting will be, and if a speaker is scheduled who the speaker is and the topic.

The second story in the middle column welcomes visitors to the site, talks about the Malibu Rotary Club, and also has a link to Adobe Reader. Most people have Adobe Reader in their computers, but to see and download PDF (Portable Document File) documents on this web site you need to have Adobe Reader. The link provides the latest free Adobe download just in case your computer does not have the proper program.

The left column has links, divided into several sections. The top section of links are *Rotary Links*, starting with a link to the Rotary International website. The next section has *Club Links*. I have included here links to the local Malibu papers, City of Malibu, Chamber of Commerce and other online news websites.

There is a link to our Rotary District 5280 web site in the light blue banner at the top of the center column above the stories.

The right column or margin starts with a listing of current club officers. If you click on the name of any club officer it will open the e-mail program installed on your computer and start an e-mail directed to that club officer. Although it does not show the e-mail address of the club officer, you can figure out what the club officer's e-mail is in this part of the site, but no other personal information is revealed about any club officer or member here or anywhere on the front end public view part of the website—no phone numbers or addresses. This personal information can only be seen by logging into the roster located in The Back End private secure part of the website.

Below the listings of current officers is a yellow divider entitled **Downloads**, and below that are links to PDF archives of each *Malibu Rotary Club Surfwriter* newsletter since January, 2009. Each week's edition is listed in descending order by date. Although public **Downloads** has primarily been used for *Malibu Rotary Club Surfwriter* archives, it could also be used to store downloadable forms, such as application forms for membership or for events.

Within the dark blue horizontal ribbon across the top of the page are several links. Two of these are especially important—*Calendar* and *Speakers*. *Speakers* lists future Malibu Rotary Club speakers. *Calendar* is perhaps the most important link on the site. It not only lists speakers, but other events as well. And while *Speakers* reveals *future* speakers *Calendar* lists both future and *past* speakers and events. You see in the **Calendar** when Malibu Rotary Club sponsored Thanksgiving Dinners with SOS in the last couple years, when Malibu Rotary Music Competitions were held, and also important District events like when RI President spoke and when District conventions were and will be. If you wanted to know who spoke at the club on a certain date, you can scroll back months on the **Calendar** until you find the person or event in question, and then find the *Malibu Rotary Club Surfwriter* written on that date or slightly after, and find an article and pictures about the person or event downloading the PDF file of that issue of the newsletter on the right column of the home page.

2. The Back End (the private secure site).

The Back End (the private secure) part of the MalibuRotary.org ClubRunner site can only be accessed by those people who have been given login rights to the site. All regular and honorary Malibu Rotary Club members have been given login credentials, consisting of an ID and password. Both of these have been assigned to you, and because this article can be seen by the public your password is not going to be shown here. But if you are a member, your ID is the initial of your first name followed by your last name (with no space) and the ClubRunner ID for Malibu Rotary “2529”. The ID cannot be changed, but you can change your password. If you don't know what your Login ID and password are contact me.

The Login is done on the Front End public home page by clicking the yellow Login at the top right blue section. It will immediately transfer you from the Front End to the Back End and open the **Admin** page which will look like the screen shot below.

The screenshot shows the ClubRunner Admin interface for the Rotary Club of Malibu. The browser window title is "Rotary Club of Malibu - Windows Internet Explorer" and the address bar shows "http://www.clubrunner.ca/CPrig/Home/admin.asp?cid=2529". The page features a navigation bar with "Search", "Smiley Central", "Smiley Chat", "Smiley Creator", "WebFetti", and "MyFunCards". Below the navigation bar, there are several utility links like "Verizon MyVerizon 2.0", "Suggested Sites", "Get More Add-ons", and "Customize Links". The main content area is titled "Rotary Club of Malibu" and contains a "NOTICE ON IES" section with recent updates. The main menu is organized into several categories:

- My ClubRunner:** Edit My Profile (New Version) **BETRI**, Change My Password (New Version) **BETRI**, Upload My Photo [Old Version], My Commitments (New Version) **BETRI**, New Member Activities, My Friends, View My Bulletin, View Club Directory, View Printable Directory and Mailing Labels, Email Message Center **NEW!** [Old Version], View Club Documents, My Attendance, My Committees **NEW!**, My Billing Account Balance **NEW!**
- Membership Manager:** Active Members List (New Version) **BETRI**, Other Users List (New Version) **BETRI**, Inactive Members List (New Version) **BETRI**, Friends of the Club | Online Newsletter Signups, New Member Orientation, Edit Dues & Money Collection, Dues & Billing [Help Guide], Report Data Changes to R1, Active Members Update Request **NEW!**, Edit Current Executives & Directors, Edit Next Year Executives & Directors, Committee Management **NEW!**, Birthday & Anniversary Report **UPDATED** (Old Version), Download Member Data(New Version) **BETRI**
- Website Manager:** Edit Home Page Links, Edit Stories, Edit News, Edit Events, Edit Speakers, Edit Download Files **NEW!** [Old Version], Edit Site Pages, Edit Photo Journals, Edit Club Documents, **Website Designer 2.0 NEW!**
- Club eBulletin:** Edit Bulletin Contents, View Club Bulletin, Email Bulletin to Members **NEW!**
- Meeting Services:** Input Attendance [Year 2010-11], Input Attendance [Year 2009-10], Report Make-ups, Print Member List | Simple Version, Attendance Report [Year 2010-11], Attendance Report [Year 2009-10], Monthly Club Report, Customized Attendance Report, Edit Duty Roster - Who Does What, Member Leaves of Absence, Member Attendance Exemption
- For Administrators:** Edit Club Info & Settings, Upload/Remove Meeting Venue Map, Edit Club Logo, Edit Custom Fields, Website Sponsorship Area, Website Sponsoring Guide

It is in this section of the ClubRunner site, using the links on the Admin page, that you can access information about all the regular and honorary club members and update your own information, including biography and picture. Not everyone can get into all the sections of the admin page, it depends on your assigned access, but all members can get

into the very important section on the upper left called **My ClubRunner**, which allows all members to see the other members contact information including picture, and their membership status. If you need help navigating the ClubRunner site there is a **Help** link on the top right blue bar at the top of all the ClubRunner pages. Clicking **Help** will give you access to the **Club Runner Support Center** which goes into depth on navigating, editing, and adding content to the website. From this section I have copied the following:

There are seven levels of access for members in your club.

- 30 Site Administrator
- 40 Club President
- 50 Club Executive
- 60 Editor
- 70 Member
- 80 Restricted Member
- 90 No Access

Note: Even though level 40 is called "Club President", you don't have to be your Club's President in order to have that level of rights.

The table below outlines the various administrative functions available on the site, and whether each level of access is allowed to do it.

Functionality	30	40	50	60	70	80	90
Edit club settings (meeting time and date, etc)	Y						
Delete user accounts	Y						
Add new members and users	Y	Y					
Mark members as Ex-Members	Y	Y					
View and edit members' profiles (*)	Y	Y	Y				
Email Services (including Pres., Pres.-Elects, and Sec. in other clubs)	Y	Y	Y				
Edit the homepage	Y	Y	Y	Y			
Create and manage events	Y	Y	Y	Y			
Edit and send the e-Bulletin	Y	Y	Y	Y			
Email Services	Y	Y	Y	Y	Y	Y	
View Club Photo Directory	Y	Y	Y	Y	Y	Y	
Register for Events	Y	Y	Y	Y	Y	Y	Y

Your access level shows what you can do on the website, what changes, what additions you can do based on your "level of access." In general when new members join the club they are assigned access **70 Member**. As the site administrator I have access level **30 Site Administrator**. I have decided to assign access level **40 Club President** to all the members of our club who are Past Presidents, plus the President-Elect and the treasurer. This means that most members of the club have access level 40. You can see your access level by logging into the site, and in **My ClubRunner**, click on the first item **Edit My Profile** and go to the Index tab called **Settings**. In **Settings** you can view your access level and change your password if you chose to. The other index tabs in **Edit My Profile** are **Personal, Rotary, Biography, Commitments, and Privacy**. Even the lowest security access level code we have as club members, **70 Member**, can get into **Edit My Profile** to upload a resume, and add or delete information about his or herself. In addition all members can use the **Email Message Center** of ClubRunner located in the

My ClubRunner section. Here you can send e-mails to all the other regular and honorary members of the Club, as well as any and all Club Presidents, Preident-Elects and secretaries in the district. Our members with access level 40 can see and do more on the ClubRunner site, including viewing and editing other members profiles, post stories and events on the website and more. After each meeting I post the attendance of members in the site and at the end of each month with the click of a button this information is posted to the district. Members are encouraged to check attendance records and also post makeups. All this can be done in the **MyClubRunner** section.

In addition to the publicly accessible documents available in the front page **Downloads** section, there is a section in the secure Back End Section of the site to **View Club Documents**. It is located in **My ClubRunner** section and can be viewed by all members of the club after login. I have only recently started to use this download section, and it is the place where Board of Directors reports and other documents are stored that are for members eyes only, and not for public consumption. Anyone with level 40 access can add download documents to either the front public section or secure **View Club Documents**. To add a document to the **View Club Documents** click on the **View Club Documents** link in the **MyClubRunner** section. This will open a list of current documents available. Click on “add” button on top to upload file.

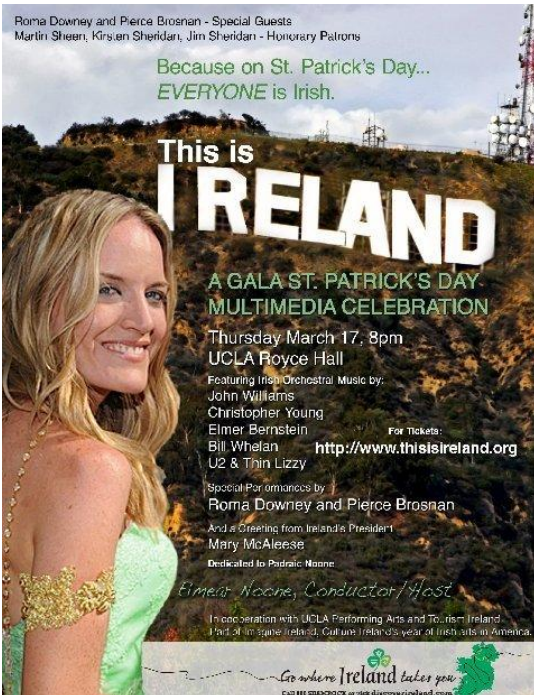
The Malibu Rotary Club ClubRunner website is in a constant stage of flux. So far few members have used it except for me. I encourage members to post events, and use the site for club activities.

Other News and Guests from Last Malibu Rotary Club Meeting

Malibu Rotary Club President Chris Bauman began the meeting of Mach 2 by showing the video on the home page of our website from ABC News on Rotary’s Eradication of Polio in India. The link is at <http://abcnews.go.com/Health/video/dr-besser-travels-india-rotary-health-polio-13010821>

Kevin Boling was freshly returned from his weekend at PETS. We are told that he made his presence known and we are not surprised. He passed out 2011-2012 RI theme pins to everyone present at the March 2 meeting. Kevin reminds of the Rio Hondo-Vernon Rotary Club’s main fund raiser of the year “A Day at the Races” which can be a fund raiser for our club. The event is at Santa Anita Park, "Top of the Stretch" on Saturday, March 26, 2011. The cost is \$40 per adult and \$5 for children. The donation includes admission, parking and lunch. For each \$40 ticket bought, they will give the buyer’s club a donation of \$15.00. Kevin has a supply of tickets for sale for the Rotary Day at the Races event. Kevin wants everyone to be aware of the April 30th event of the Riverside YWCA “Men Who Cook” which he always enters and plans to win.

Geoff Ortiz said that two students from Malibu High School are confirmen to go to RYLA camp in Catalina in April. **David Baird** said he know of two qualified high school students who



live in Malibu, and attend Oaks Christian school . Malibu Rotary Club is planning to sponsor 4 students.

Guests

Guests at the meeting Guests at the meeting included **Maggie Luckerath**, as well as Maggie's husband, **Hubert**, sculptress **Danielle Anjou**, and Jack's friend **Jim**. Maggie reminds of the St. Patrick's Day bash This is Ireland at UCLA Royce Hall March 17 has added Pierce Brosnan to an all star cast.. For information www.Thisisireland.org.

Malibu Rotary Club Supports BioSand Filters in Ecuador

Malibu Rotary Club voted to send \$500 to the Rotary Club of Pontiac Michigan to help build and install BioSand Filters in Santo Domingo De Los Colorados, Ecuador. As was noted by Carol Cousineau, who, along with husband Ron brought the project to our attention, after installing the first BioSand filters in Ecuador (and pictured left) "That money would be matched by the next District Grant, which we have been assured we will get. So, for instance \$500.00 become \$750.00."

Malibu Rotary Club President Chris Bauman signed papers in November, 2010 for the Bio Sand Filters Michigan Rotary District Simplified Grant.

The filters and two 5 gallon safe water containers per unit, cost around \$60.00 each, so a donation of \$500.00 would provide 12 families of five or more with 20 gallons of water each day - enough for drinking, cooking, brushing teeth, bathing and washing clothes! The filters are expected to last at least 50 years without the need to add any expense except chlorine - available and inexpensive. That means each family will have more money to provide more nutritious food for their families, since they don't have to pay for propane to boil their water. It will mean more time to spend with their children, rather than boiling or foraging for firewood. With great improvement in the health of all the family members, fewer cases of diarrhea and stomach flu from bad water and parasites, the parents will better be able to hold down a job and provide for their families, children will be able to attend school more days and have a better future.



We are excited about this project because we anticipate that this is just the beginning. All over Ecuador, there are families struggling to survive, with a high infant mortality rate, because of bad water. This successful project will be a shining example and model. Rotary is the perfect vehicle for getting the word out about BioSand and accomplishing the goal of providing safe drinking water for the world. BioSand is one of the four methods of purifying water recommended for Third World Countries by the World Health Organization. (We have researched the others. Since they provide only a small amount of water for drinking, are small and ceramic, so more susceptible to breakage or deterioration, or adding so much chlorine that the people won't drink it, the concrete BioSand is by far the best choice for all but mountainous areas, where a more expensive plastic version of BioSand is an alternative.)”

For a while it looked like the matching grant process was not going to happen.

When Malibu Rotarian Bill Wishard visited Ecuador in March, 2010, he was able to meet with Ecuador Past District 4400 Governor, Juan Prinz, to get project back on track

Please see Malibu Rotary Club Website www.maliburotary.org for latest Calendar and future speakers

Calendar

Malibu Rotary Club Speakers (all meetings at at 7:30 a.m in the Pepperdine University Fireside Room)

Mar 9 2011, Jonathan Friedman, malibu.patch.com

