



# Grapevine Rotary Club

Grapevine, Texas • Chartered 1967  
District #5790 • Club #1793  
www.grapevinerotary.com  
**August 10, 2016**

**Meeting Time:**  
Wednesday Noon  
Lancaster Theater  
308 South Main

## Coming Events

- 08/10 **Blood Drive– 8 am - 3 pm**  
The Grapevine REC  
Community Stage Classroom
- 08/11 **Rotary Board Meeting**  
4:00 p.m.  
Grapevine Chamber
- 08/10 **Blood Drive– 8 am - 3 pm**  
The Grapevine REC  
Community Stage Classroom
- 08/17 **Rotary Foundation Meeting**  
6:00 p.m. Main Street Bakery

Log on to our Website:  
[www.GrapevineRotary.com](http://www.GrapevineRotary.com)

Like us on Facebook at:  
<http://www.facebook.com/pages/Grapevine-Rotary>

### Special Thanks to

**Rotary Bulletin Sponsor**  
Nathaniel Neal, Jake Garcia & Oscar Romero  
**NJ Graphic Design Inc.**  
203 E. Worth St., Grapevine, TX 76051  
(817)329-9911

For bulletin updates, contact RaDonna Hessel:  
RaDonna@GrapevineChamber.org  
or call 817-481-1522

## PROGRAM - Camp RYLA

### *Darlene Freed*

### **RYLA (Rotary Youth Leadership Awards)**

Officially adopted by Rotary International in 1971, RYLA is one of the most significant and fastest growing programs of Rotary service. Each year, thousands of young people take part in the program worldwide. Camp RYLA aims to:

- \* Demonstrate Rotary's respect and concern for youth
- \* Provide an effective training experience for selected youth and potential leaders
- \* Encourage leadership of youth by youth
- \* Recognize publicly young people who are rendering service to their communities



This year, District 5790 sponsored 134 RYLarian campers (our largest number ever). These students gathered for 4 days at TWU to learn about leadership, team work and to build lifelong friendships. This year, our club provided the opportunity for seven students (GHS, CHHS, Carroll high schools) to attend. Several of these students are with us today to share their experiences.

## Upcoming Program

**August 17, 2016**

*Brent Hoodenpyle - Internet Marketing-Demystified*

**August 24, 2016**

*John Riggins - Continuum of Care with Aging Seniors*

**August 30, 2016**

*Conrad Heede - Rotary Foundation Update/Awards Presentation*

**September 7, 2016**

*Mary Ann McDuff - District Governor*

## Rotary Four-Way Test

**Of the things we think, say or do:**

1. Is it the **TRUTH**?
2. Is it **FAIR** to all concerned?
3. Will it build **GOODWILL** and **BETTER FRIENDSHIPS**?
4. Will it be **BENEFICIAL** to all concerned?





# Leadership

## Club Officers 2016-2017

**Juneria Berges**  
*President*

**Eddie Salame**  
*Vice President & President Elect*

**Janice Kane**  
*Vice President & President Elect  
Nominee*

**LeAnn Brown**  
*Immediate Past President*

**Janice Kane**  
*Secretary*

**Kirby Kercheval**  
*Treasurer*

**Wayne Paul Frank**  
*Sergeants at Arms*

**Allen Barraclough**  
*Strategic Planning*

...

## Club Directors

### 2016-2017

**Rick Westfall - Vocational**  
**Lou Hillman - International**  
**Allison Patterson - Club Service**  
**Mary Jo Tellin - Community**  
**Darlene Freed - Youth in Service**

### 2017-2018

**Robyn Scott - Vocational**  
**Morgan Nichols - International**  
**Jared Richardson - Club Service**  
**Kevin McNamara - Community**  
**Brandon Corse - Youth in Service**

### Permanent

**Conrad Heede, PDG**  
**Walt Milner, PDG**  
**Tim Smith, PDG**

### Special Thanks to our Caterers:

Casey Owens, Owner



413 E. Northwest Highway, Grapevine, TX 76051  
(817) 481-3212

## Grapevine News & Notes

### Blood Drive from Roger Ackley

**Our Blood Drive is here**, and for this one we are proud to be teaming with our Grapevine Police and Fire Departments and City Hall. It is actually their regular quarterly drive for employees, family, friends, and the public. You still have time to GIVE!

**Wednesday, August 10<sup>th</sup> The Grapevine REC—8am - 3pm** Look for the Carter Team in the Community Stage Classroom.

**Wednesday, August 17<sup>th</sup> The Grapevine REC - CANCELLED**

Our Blood Drive partner at Carter BloodCare, Audra Torres, reports blood supplies are at very low levels!

Please help is you can! And remember: **"BE A DONOR OR BRING A DONOR!!"**



## Rotary District 5790 Foundation-Membership Seminar

**Saturday, August 27, 20-2016**  
**8:30 AM- 2:00 PM**

Northside Baptist Church  
910 North Main Street, Weatherford

Cost: \$20 per person - Includes continental breakfast and lunch.  
Contact Janice Kane to register.



## NOTES FROM THE PRESIDENT....

Last week's meeting was exciting for all who attended the **Grapevine Rotary Club Assembly!** Our members were engaged, attentive and enjoyed the presentations outlining the marvelous projects we will accomplish during our **Grapevine Rotary Club's 50th Birthday year!** We want to thank those who presented:

- CLUB SERVICE:** Allison Patterson, Jared Richardson
- COMMUNITY SERVICE:** Mary Jo Tellin, Kevin McNamara
- VOCATIONAL SERVICE:** Rick Westfall
- YOUTH IN SERVICE:** Darlene Freed
- INTERNATIONAL SERVICE:** Lou Hillman, Morgan Nicols
- STRATEGIC PLANNING:** Allen Barraclough.

At the **August 17th meeting**, King of Beer Bill Walsh will begin signing up Rotarians to work in the Grapefest beverage booth on September 16, 17 and 18. Just remember that those who commit early get their choice of days and times. What an incentive!





# Leadership Moment

“Enjoy every moment of life with a BIG SMILE on your face!”



## Birthdays

Please join us in celebrating the Birthdays of the following members this month:

<b>August 2016</b>	
2	<b>Juneria Berges</b>
2	<b>Jack Dortch</b>
2	<b>Kevin McNamara</b>
4	<b>Sheri Bratton</b>
4	<b>Angela Graves</b>
6	<b>Allen Barraclough</b>
12	<b>Laura Qualls</b>
15	<b>Robin Ryan</b>
16	<b>Marvin Balvin</b>
16	<b>Paul Pineider</b>

## Anniversaries

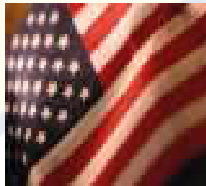
Please join us in celebrating the anniversaries of the following members this month:

<b>August, 2016</b>	
1	<b>Gary Humble (Andrea)</b>
5	<b>Christian Ross (Melanie)</b>
6	<b>Melburn Sibley (Martha)</b>
10	<b>Shonda Schaefer (Paul)</b>
11	<b>Deb Hinton (Mark)</b>
19	<b>Ralph Mattison (Jennifer)</b>
22	<b>Roger Ackley (Patti)</b>



## Flag Days

Meet at 6:45 AM at the Depot to put out flags.  
Meet at 5:45 PM at the Depot to pick up flags.



<b>Independence Day</b>	July 4, 2016
<b>Labor Day</b>	September 5, 2016
<b>Remembering 9-11</b>	September 11, 2016
* At Memorial Site (Texan Trail & Hwy 26)	
<b>Columbus Day</b>	October 10, 2016
<b>Veteran's Day</b>	November 11, 2016
<b>Martin Luther King Day</b>	January 16, 2017
<b>President's Day</b>	February 20, 2017
<b>Peace Officers Memorial Day</b>	May 15, 2017
<b>Memorial Day</b>	May 29, 2017
<b>Flag Day</b>	June 14, 2017

## Grapevine Rotary Club 2016-2017 Committee And Chairmanships

### CLUB SERVICE

**Directors: Allison Patterson, Jared Richardson**

Programs:	Elaine Free
Public Relations/Social Media:	Deb Hinton
	Allison Patterson
Newsletter/Directory:	RaDonna Hessel
Internet Support/Website:	Allison Patterson
Holiday Party:	RaDonna Hessel
Historical Committee:	Lou Hillman
New Members:	Eddie Salame
Fireside Chat:	Walt Milner
Membership and Retention:	Walt Milner
	Tim Smith
Freshman Committee:	Allen Barraclough
Scholarship Fund Raising:	RaDonna Hessel
Fun Committee:	LeAnn Brown
	Robyn Scott
Family of Rotary:	Helen Jean Lucas Reed
	Teri Rhodes
Strategic Planning:	Allen Barraclough
Strategic Initiatives Committees:	
Marketing GRC	Marci Junge
Engaging Millennials	Allen Barraclough

### COMMUNITY SERVICE

**Directors: Mary Jo Tellin, Kevin McNamara**

Festivals:	Bill Walsh,
	Bret Berglund, Rick Navarro and
	Dennis Luers
Main Street Flags:	Robin Ryan,
	Bruce Stacy, Bret Berglund,
	LeAnn Brown, Ralph Mattison
Special Olympics:	Jill Bass, Robyn Scott
Student Computer Awards:	Bill Walsh
Health & Blood:	Tena Neely,
	Gary Fickes, Darlene Freed
	Roger Ackley
Middle School Adoption:	Rick Westfall
	Mary Jo Tellin
Strategic Initiatives Committees:	
More Community Service in Grapevine	Janice Kane

### VOCATIONAL SERVICE

**Directors: Rick Westfall, Robyn Scott**

Vocational Service Awards:	RaDonna Hessel
Ken Diehm Community Service Award:	
	Melburn Sibley
	Debi Meek
Spirit Awards:	Eddie Salame
RITE:	

### YOUTH IN SERVICE

**Directors: Darlene Freed, Brandon Corse**

4-Way Speech Contest:	Jennifer Brecht
	Carol Record
Scholarship Awards:	Jeff Taber
GHS & CHHS Interact	Darlene Freed
	Juneria Berges
RYLA:	Darlene Freed
Rotary Youth Exchange:	Janice Kane

### INTERNATIONAL SERVICE

**Directors: Lou Hillman, Morgan Nichols**

Rotary Foundation:	Conrad Heede
Global Grants:	Conrad Heede
Wine Fellowship:	Marci Junge
	Conrad Heede

## Rotary International Officers

**John F. Germ**

Rotary Club of Chattanooga, Tennessee  
**Rotary International President**

**Mary Ann McDuff**

The Rotary Club of Denton  
**Governor District 5790**

**Marci Junge**

The Rotary Club of Grapevine  
**Lieutenant Governor East**

**Margaret Potter**

The Rotary Club of Metroport  
**Assistant Governor District 5790**

**Conrad Heede**

**Walt Milner**  
**Tim Smith**  
**GRC Past District Governors**

## Nearby Clubs for Make-Up Meetings

### Arlington

Thursdays at Noon at First United Methodist Church (313 N. Center)

### Arlington North

Mondays at 11:50 AM at Olenjack's Grille (770 Road to Six Flags East, Suite 100)

### Arlington Sunrise

Fridays at 6:45 a.m. Rolling Hills Country Club, 401 East Lamar Blvd.

### Arlington Sunset

Tuesdays at 6:00 PM at J Gilligan's (407 East South Street, Arlington)

### Arlington West

Tuesdays at Noon at Shady Valley Golf Club (4001 West Park Row, Arlington)

### Colleyville

Tuesday at Noon at Ruggeri's Italian Ristorante, (32 Village Lane)

### Eagle Mountain - Saginaw

Wednesdays 7:00 AM at Hollenstein Career and Technology Center • 5501 Marine Creek Parkway, Fort Worth, TX 76179

### Flower Mound

Thursdays at Noon at Salerno's Restaurant (3407 Long Prairie Rd., F.M)

### Fort Worth East

Mondays at Noon at Meadowbrook Methodist (3900 Meadowbrook)

### Fort Worth North

Wednesdays at Noon at Joe T. Garcia's ( 2201 North Commerce, Fort Worth)

### HEB

Tuesdays, at Noon at 1st Baptist Church of Hurst (Norwood, south of Harwood)

### Irving-Las Colinas Rotary

Thursdays at Noon at Las Colinas Country Club

### Keller

Tuesday, Noon, Sky Creek Ranch Golf Club

### Lewisville

Wednesdays at Noon at Grotto Restaurant

### Lewisville Morning

Thursdays at 7:00 AM at the CCA Community Room, 200 S. Mill St.

### Metroport

Fridays at 7:00 AM at the Marriott-Solana

### Mid-Cities Pacesetters Rotary Club

Fridays, 7 AM (Texas Star Golf Course)

### Southlake

Friday at Noon at Timarron Country Club  
1400 Byron Nelson Parkway

# Grapevine Rotary Club Membership Roster

<b>ACKLEY, Roger (2)<sup>#</sup></b> ..... 612-839-3866 <i>Retired</i> ..... rogackley@msn.com	<b>GUM, Rhett</b> ..... 817-202-1494 <i>Congressional Outreach</i> Rhett.gum@mail.house.gov	<b>RECORD, Carol Ann (20) *<sup>#</sup></b> ..... 817-488-1008 <i>Pastor</i> ..... revcarol@flash.net
<b>ANALOVITCH, Jay (1)<sup>#</sup></b> ..... 623-236-0724 <i>Hospice</i> ..... Holdings48@hotmail.com	<b>HAWKINS, Shawn</b> ..... 817-821-8966 <i>Computer Consulting</i> ..... Shawn@bdunn.com	<b>REED, Helen Jean Lucas Reed <sup>#</sup></b> ..... 817-329-4776 <i>Public Relations</i> ..... hlreed4@msn.com
<b>BAKALO, Yuliya</b> ..... 817-908-3717 <i>Realtor</i> ..... yuliyadfw@gmail.com	<b>HEEDE, Conrad (41) PDG *<sup>#</sup></b> ..... 817-235-8110 <i>Real Estate Mgt.</i> ..... ccheede@aol.com	<b>RICHARDSON, Jared</b> ..... 214695-2733 <i>Sales Manager</i> ..... jbrichardson@sewell.com
<b>BALVIN, Marvin (3)*<sup>#</sup>T</b> ..... 817-328-1144 <i>Realtor</i> ..... marvinbalvin@kw.com	<b>HESSEL, RaDonna (14)*<sup>#</sup>T</b> ..... 817 481-1522 <i>Chamber of Commerce CEO</i> ..... RaDonna@GrapevineChamber.org	<b>RHODES, Teri (3)<sup>#</sup></b> ..... 817-797-5465 <i>Realtor</i> ..... TeriRhodes@msn.com
<b>BARKER, Alicia</b> ..... 817-673-1561 <i>Office Furniture Sales</i> ..... ahhbttb@verizon.net	<b>HILLMAN, Lou (31) *<sup>#</sup>T</b> ..... 817-481-2573 <i>Real Estate</i> ..... Lou@BHLSLH.com	<b>ROBINSON, Paul <sup>#</sup></b> ..... 682-234-4992 <i>Orthodontist</i> ..... paulrobinson_dmd@yahoo.com
<b>BARRACLOUGH, Allen (15)*<sup>#</sup></b> ..... 817-300-9327 <i>Training - Org. Dev.</i> ..... abear727@aol.com	<b>HINTON, Deb</b> ..... 817-657-4772 <i>Retired</i> ..... mardebev@verizon.net	<b>RODRIGUEZ, Jesse</b> ..... 817-707-7600 <i>Self-Employed</i> ..... cmredu@gmail.com
<b>BASS, Jill <sup>#</sup></b> ..... 469-814-2547 <i>Administrator/PT</i> ..... Jill.bass@baylorhealth.edu	<b>HORAK, Curtis</b> ..... 972-302-1907 <i>Sign Co. Owner</i> ..... curt@prioritysignsandgraphics.com	<b>RODRIGUEZ, Nadine (H)</b> ..... 817-410-3583 <i>Events Crd.</i> ..... nrodriguez@grapevintexasusa.gov
<b>BELOFF III, Alex (47)<sup>#</sup> +</b> ..... 817-556-1233 <i>Sales/Training</i> ..... alexbelloff@verizon.net	<b>HUFFMAN, Darrell <sup>#</sup>T</b> ..... 817-366-5271 <i>Deputy Constable</i> ..... dwh5122@msn.com	<b>ROSS, Christian</b> ..... 817-601-5019 <i>Product Developer</i> ..... hello@eightyninety.com
<b>BERGES, Juneria (1)<sup>#</sup></b> ..... 972-304-4368 <i>Non-Profit E.D.</i> ..... jbeddr@gmail.com	<b>HUMBLE, Gary <sup>#</sup></b> ..... 214-708-8091 <i>Entrepreneur</i> ..... me@garyhumble.com	<b>RUMBELOW, Bruno (1)<sup>#</sup>T</b> ..... 817-410-3104 <i>Municipal Admin.</i> ..... brumbelow@grapevintexas.gov
<b>BERGLUND, Bret (2)<sup>#</sup>T</b> ..... 817-455-1241 <i>Service Manager</i> ..... babgsxr@gmail.com	<b>HUTTON, Traci D. (5)<sup>#</sup></b> ..... 817-442-9352 <i>Attorney</i> ..... Traci@TraciHutton.com	<b>RYAN, Robin (4)<sup>#</sup>T</b> ..... 817-251-5501 <i>Superintendent</i> ..... Robin.Ryan@GCISD.net
<b>BOHSALI-GOURY, Yasmine (H) <sup>#</sup></b> ..... 817-247-9895 <i>Restaurateur</i> ..... yasmine316@hotmail.com	<b>JANICEK, Steve <sup>#</sup></b> ..... 682-888-6506 <i>Corporate Transportation</i> ..... swjanicek@aol.com	<b>SALAME, Eddie (3)<sup>#</sup></b> ..... 817-410-3225 <i>Police Administration</i> ..... esalame@grapevintexas.gov
<b>BRATTON, Sheri (1)</b> ..... 817-908-9767 <i>Marketing / Admin</i> ..... Srf0001@hotmail.com	<b>JAY, Randy</b> ..... 817-798-6246 <i>Bank Lending</i> ..... randy.jay@go2fbt.com	<b>SALAME, Margie</b> ..... 817-366-5499 <i>Realtor</i> ..... margiesalame@gmail.com
<b>BRECHT, Jennifer <sup>#</sup></b> ..... 817-296-8675 <i>Insurance</i> ..... jbrecht@brechtassoc.com	<b>JOHNSTON, Don <sup>#</sup></b> ..... 682-325-5202 <i>Banking</i> ..... djohnston@nstarbank.com	<b>SAYERS, Merlyn <sup>#</sup></b> ..... 817-412-5101 <i>Blood Bank Mgt.</i> ..... msayers@carterbloodcare.org
<b>BROWN, Darrell</b> ..... 817-564-3443 <i>Firefighter</i> ..... DBrown@GrapevineTexas.gov	<b>JONES, Dick (E) <sup>#</sup></b> ..... 817-421-4617 <i>Pest Control Owner</i> ..... Djpj57@verizon.net	<b>SCHAEFER, Shonda <sup>#</sup></b> ..... 817-657-1017 <i>Non-Profit Mgt.</i> ..... sschaefer@gracegrapevine.org
<b>BROWN, Kelly <sup>#</sup></b> ..... 817-481-7025 <i>Chiropractor</i> ..... brownchiropracticca@gmail.com	<b>JUNGE, Marci (27) *<sup>#</sup></b> ..... 817-366-6138 <i>Interior Designer</i> ..... mjunge@aol.com	<b>SCHRIEVER, Stacy <sup>#</sup>T</b> ..... 817-707-5454 <i>Mortgage Banker</i> ..... stacylynnschriever@gmail.com
<b>BROWN, LeAnn (3) <sup>#</sup></b> ..... 817-313-3107 <i>Real Estate</i> ..... labrown@silveroakcre.com	<b>KANE, Janice <sup>#</sup>(6)</b> ..... 817-251-5480 <i>Foundation E.D.</i> ..... Janice.kane@gcisd.net	<b>SCHULTZ, Kirk</b> ..... 515-250-9166 <i>Trainer</i> ..... kirkschultz@gmail.com
<b>BROWN, Michael (1) <sup>#</sup></b> ..... 817-874-7817 <i>Financial Advisor</i> ..... Michael.Brown@edwardjones.com	<b>KELLY, Mark Lucas <sup>#</sup>(1)</b> ..... 817-313-8288 <i>Funeral Home</i> ..... mkelly@familyowned.net	<b>SCOTT, Robyn <sup>#</sup></b> ..... 817-488-2733 <i>Financial Advisor</i> ..... Robyn.scott@edwardjones.com
<b>BUFFINGTON, Bill <sup>#</sup></b> ..... 214-2058-7408 <i>Video Productions</i> ..... auditvisuals@gmail.com	<b>KERCHEVAL, Kirby</b> ..... 817-328-1924 <i>Commercial Lending</i> ..... KirbyKercheval@gmail.com	<b>SHERMAN, Judy (10)<sup>#</sup></b> ..... 817-366-1119 <i>Financial Advisor</i> ..... judysherman_2000@yahoo.com
<b>BURRUS, Bob (E)<sup>#</sup></b> ..... 817-223-5406 <i>Retired</i> ..... bobburrus7@gmail.com	<b>KIMBRO, Marshall</b> ..... 817-287-5616 <i>Banker</i> ..... marshall.kimbrow@legacytexas.com	<b>SIBLEY, Melburn (E)*<sup>#</sup></b> ..... 817-329-0821 <i>Pastor</i> ..... jmelburn@aol.com
<b>CARNES, Matt <sup>#</sup></b> ..... 817-722-8811 <i>Marketing</i> ..... matt.carnes@verizon.net	<b>LEASE, Carolyn <sup>#</sup></b> ..... 817-501-8596 <i>Sales</i> ..... Carolyn@cavnarsmith.com	<b>SIGLER, JR., E.A. (E)<sup>#</sup></b> ..... 817-267-6426 <i>School Administrator</i> ..... esigler1@att.net
<b>COPPAGE, Paul (11)<sup>#</sup>T</b> ..... 214-226-0013 <i>Real Estate</i> ..... paulcoppage@yahoo.com	<b>LUERS, Dennis *<sup>#</sup></b> ..... 817-832-5886 <i>Real Estate</i> ..... Dennisluers@verizon.net	<b>SLECHTA, Paul <sup>#</sup></b> ..... 817-488-4151 <i>Embroidery/Owner</i> ..... paul@pandasportswear.com
<b>CORSE, Brandon <sup>#</sup></b> ..... 817-608-6868 <i>Financial Advisor</i> ..... brandon.corse@edwardjones.com	<b>LUERS, Jan Smith (2)<sup>#</sup></b> ..... 214-202-8700 <i>Event Planning</i> ..... rbsjss@verizon.net	<b>SMITH, Peggy <sup>#</sup>(H)</b> ..... 817-424-1699 <i>Retired</i> .....
<b>COY, Chris (8)<sup>#</sup></b> ..... 817-689-9899 <i>Corporate Finance</i> ..... chriscoydfw@gmail.com	<b>MANGRUM, Michael</b> ..... 469-989-7371 <i>Financial Advisor</i> ..... mmangrum@wradvisors.com	<b>SMITH, Tim PDG (3) *<sup>#</sup></b> ..... 405-207-1019 <i>HR: Training &amp; Dev.</i> ..... tansonsmith@gmail.com
<b>COY, Traci</b> ..... 817-729-0963 <i>CPA</i> ..... traci@tracicoypa.com	<b>MATTISON, Ralph <sup>#</sup></b> ..... 972-897-0117 <i>Winery Owner</i> ..... MattisonR@hotmail.com	<b>STACY, Bruce (2)<sup>#</sup></b> ..... 337-296-5475 <i>Retired</i> ..... Abs.cfs@verizon.net
<b>DAVIS, Ken</b> ..... 817-846-7897 <i>Automotive Sales</i> ..... Ken.Davis@Grubbs.com	<b>MCNAMARA, Kevin</b> ..... 972-921-5835 <i>Restaurant Owner</i> ..... Kevin@WiseGuysTX.com	<b>STEWART, Roy (E) *<sup>#</sup></b> ..... 817-481-5824 <i>Real Estate Dev.</i> ..... roy_stewart@peoplepc.com
<b>DODSON, Lee <sup>#</sup></b> ..... 817-481-1036 <i>Dentist</i> ..... lcdds@aol.com	<b>MEEK, Debi <sup>#</sup></b> ..... 817-800-0804 <i>Retail Mgt.</i> ..... debimeek@hotmail.com	<b>TABER, Jeff (3)</b> ..... 405-203-5250 <i>Business Consultant</i> ..... jefftaber@hotmail.com
<b>DORTCH, Jack (39)<sup>#</sup></b> ..... 817-481-1421 <i>Insurance</i> ..... jdortch@farmersagent.com	<b>MILLER, Tom</b> ..... 817-706-8733 <i>Owner</i> ..... tom@theliftoffice.com	<b>TATE, William "Bill" <sup>#</sup>T</b> ..... 817-488-8668 <i>Attorney</i> ..... wdteate@verizon.net
<b>ECKMANN, Pamela</b> ..... 817-251-5962 <i>Chiropractor</i> ..... DrPamEck@yahoo.com	<b>MILNER, Walt (30) PDG *<sup>#</sup></b> ..... 817-283-6450 <i>Banker</i> ..... WMilner744@aol.com	<b>TELLIN, Mary Jo</b> ..... 817-807-3962 <i>Chamber of Commerce</i> ..... MaryJo@GrapevineChamber.org
<b>FANTZ, Debra</b> ..... 817-310-3064 <i>Independent Sales Dir.</i> ..... debfantz@aol.com	<b>MITCHELL, Kevin <sup>#</sup></b> ..... 817-253-9327 <i>Parks Director</i> ..... KMitchell@grapevintexas.gov	<b>THOMAS, Jake</b> ..... 972-891-2504 <i>Auto Dent Removal</i> ..... Jake@Dentless.net
<b>FICKES, Gary <sup>#</sup>T</b> ..... 817-581-3600 <i>County Government</i> ..... gfickes650@aol.com	<b>MOLLET, John <sup>#</sup></b> ..... 817-481-2559 <i>Pastor</i> ..... JohnM@FUMCG.org	<b>TORRES-LEPP, Amy</b> ..... 214-803-2765 <i>Title Insurance</i> ..... Amy@alamotitletexas.com
<b>FINDLAY, Debra</b> ..... 626-201-8105 <i>CPA</i> ..... debrafindlay@sbcglobal.net	<b>NAVARRO, Richard</b> ..... 888-505-2803 <i>Consultant</i> ..... Creativemind.nav@gmail.com	<b>VAN DYKE, Bob (23) *<sup>#</sup></b> ..... 817-576-2323 <i>Charter Financial Consultant</i> ..... Robert.VanDyke@Prudential.com
<b>FOLIARD, Edward</b> ..... 708-305-4721 <i>Retired Fire Chief</i> ..... EdwardFoliard@gmail.com	<b>NEAL, Nathaniel (H)</b> ..... 817-329-9911 <i>Printing</i> ..... neal@njgdinc.com	<b>WALSH, Bill (10)<sup>#</sup></b> ..... 817-421-0197 <i>Personnel Mgt.</i> ..... billwalshxt@verizon.net
<b>FRANCISCO, Bill (1)<sup>#</sup></b> ..... 817-946-7785 <i>Sales Management</i> ..... bfrancisco@att.net	<b>NEALY, Tina <sup>#</sup></b> ..... 817-329-1668 <i>Events Planning</i> ..... weddings@paradisecovetx.com	<b>WEBSTER, Terry (E) <sup>#</sup></b> ..... 214-706-8080 <i>Banker</i> ..... terry.webster@bbvacompass.com
<b>FRANK, Wayne Paul (6) *<sup>#</sup></b> ..... 817-949-2161 <i>Attorney</i> ..... wpfatty@aol.com	<b>NICHOLS, Morgan</b> ..... 805-368-3001 <i>Financial Advisor</i> ..... morgan.nichols@ampf.com	<b>WESTFALL, Rick</b> ..... 817-925-9063 <i>Education Administration</i> ..... Rick.Westfall@GCISD.net
<b>FRANKS, Jon Michael <sup>#</sup></b> ..... 817-329-5573 <i>Attorney</i> ..... jonmfranks5@gmail.com	<b>NIX, David (H)</b> ..... 817-975-7720 <i>CPA</i> ..... redz28@att.net	<b>WHITE, MATTHEW (H)</b> ..... 254-368-6725 <i>School Administration</i> ..... Matthew.White@gcisd.net
<b>FREE, Elaine (28)<sup>#</sup></b> ..... 214-534-1760 <i>Ed. Foundation Consulting</i> ..... Elaineefree1@charter.net	<b>NORTON, Bill</b> ..... 817-498-9159 <i>Technical Analyst</i> ..... wnorton7@hotmail.com	<b>WHITLEY, Rob <sup>#</sup></b> ..... 817-296-1659 <i>Commercial Cleaning</i> ..... rwhitleyent@aol.com
<b>FREED, Darlene <sup>#</sup></b> ..... 817-480-6434 <i>Real Estate</i> ..... Jfreed1@hotmail.com	<b>O'DANIEL, Bill</b> ..... 817-310-3555 <i>Banker</i> ..... bodaniel@bnkwest.com	<b>WILBANKS, Paula (H)</b> ..... 817-223-4105 <i>Retired Teacher</i> ..... gigipw@aol.com
<b>GILLETTE, Edie (E)<sup>#</sup></b> ..... 817-481-5050 <i>Public Relations</i> ..... edie_gw@verizon.net	<b>O'DELL, Duff (10)*<sup>#</sup>T</b> ..... 214-478-3750 <i>Sales/Marketing</i> ..... pdodell@verizon.net	<b>WOODS, Maybelle <sup>#</sup>(H)</b> ..... 817-481-3846 <i>Retired</i> .....
<b>GOBEN, Allen</b> ..... 817-515-6670 <i>College Admin.</i> ..... Allen.Goben@tccd.edu	<b>PATTERSON, Allison (2) *<sup>#</sup></b> ..... 817-896-1560 <i>Health Management</i> ..... Allison@cover-tek.com	
<b>GRAVES, Allan <sup>#</sup></b> ..... 817-552-7742 <i>Attorney</i> ..... ag@all-lawfirm.com	<b>PINEIDER, Paul (14) *<sup>#</sup></b> ..... 817-410-3700 <i>CPA</i> ..... p.pineider@pfacpa.com	
<b>GRAVES, Angela (1)<sup>#</sup></b> ..... 817-553-2500 <i>Banking</i> ..... Angela.Graves@go2fbt.com	<b>QUALLS, Laura</b> ..... 972-814-0960 <i>Travel Agent</i> ..... lqualls@dreamvacations.com	
<b>GRAY, John (6)<sup>#</sup></b> ..... 817-701-6349 <i>Petroleum Refining</i> ..... jhgshelton@gmail.com	<b>RAMSEY, Jan (1)<sup>#</sup></b> ..... 817-371-1393 <i>Real Estate</i> ..... janramsey@remax.net	
<b>GRIBBLE, Rocky (15)<sup>#</sup>T</b> ..... 817-481-8733 <i>Musical Entertainment</i> ..... rockyg3495@aol.com		

\* Indicates a new Red Badge member (123)