



# Grapevine Rotary Club

Grapevine, Texas • Chartered 1967  
District #5790 • Club #1793  
www.grapevinerotary.com  
**August 24, 2016**

**Meeting Time:**  
Wednesday Noon  
Lancaster Theater  
308 South Main

## Coming Events

- 08/17 **Rotary Foundation Meeting**  
6:00 p.m. Main Street Bakery
- 08/27 **District 5790 Foundation-Membership Seminar**  
8:30-2:00 PM Northside Baptist Church, Weatherford
- 08/31 **Festival Alcohol Training**  
Lancaster Theater  
immediately after Rotary
- 09/05 **FLAG DUTY - Labor Day**  
6:45 am/4:45 pm Train Depot  
Rotarians are noted on back page of this bulletin.
- 09/08 **Rotary Board Meeting**  
4:00 p.m.  
Grapevine Chamber
- 09/16-18 **GRAPEFEST - Rotary Booth!**
- 06/10-14, 2017 **Rotary International Convention, Atlanta GA**

Log on to our Website:  
[www.GrapevineRotary.com](http://www.GrapevineRotary.com)

Like us on Facebook at:  
<http://www.facebook.com/pages/Grapevine-Rotary>

### Special Thanks to

**Rotary Bulletin Sponsor**  
Nathaniel Neal, Jake Garcia & Oscar Romero  
**NJ Graphic Design Inc.**  
203 E. Worth St., Grapevine, TX 76051  
(817)329-9911

For bulletin updates, contact RaDonna Hessel:  
RaDonna@GrapevineChamber.org  
or call 817-481-1522

## PROGRAM - Continuum of Care with Aging Seniors

### John Riggins

John Riggins, is Owner/Administrator of Com-Forcare (Serving NE Tarrant and Fort Worth), a non-medical Home Care company, and providing over 14,000 hours of home care. John is a Certified Senior Advisor working with senior health, financial, and psychosocial issues. His agency is certified in Dementiawise care program for in home program.



ComForcare started in 1996 in Bloomfield Hills, Michigan and has been operating in Tarrant County for 11 years. We specialize in helping seniors stay home by helping with Activities of Daily living and/or dementia related care.

John currently serves on the Board of Directors of Guardianship Services a local firm helping seniors estranged from their families' from abuse, neglect, and exploitation.

John graduated from Christian Brothers University in Memphis, TN with a Bachelor of Science degree in business administration. He first worked at General Electric then helped to start a Better Business Bureau in Pensacola, Florida. He then ran the Fort Worth BBB for 22 years as President.

## Upcoming Program

**August 31, 2016**  
*Conrad Heede - Rotary Foundation Update/Awards*

**September 7, 2016**  
*Mary Ann McDuff - District Governor*

**September 14, 2016**  
*Tara Storch-Taylor's Gift: The Power to Outlive Yourself*

**September 21, 2016**  
*GCISD Coach Jackson and Coach Willis - Friday Night Lights*

## Rotary Four-Way Test

Of the things we think, say or do:

1. Is it the **TRUTH**?
2. Is it **FAIR** to all concerned?
3. Will it build **GOODWILL** and **BETTER FRIENDSHIPS**?
4. Will it be **BENEFICIAL** to all concerned?





# Leadership

## Club Officers 2016-2017

**Juneria Berges**  
*President*

**Eddie Salame**  
*Vice President & President Elect*

**Janice Kane**  
*Vice President & President Elect  
Nominee*

**LeAnn Brown**  
*Immediate Past President*

**Janice Kane**  
*Secretary*

**Kirby Kercheval**  
*Treasurer*

**Wayne Paul Frank**  
*Sergeants at Arms*

**Allen Barraclough**  
*Strategic Planning*

...

## Club Directors

### 2016-2017

**Rick Westfall - Vocational**  
**Lou Hillman - International**  
**Allison Patterson - Club Service**  
**Mary Jo Tellin - Community**  
**Darlene Freed - Youth in Service**

### 2017-2018

**Robyn Scott - Vocational**  
**Morgan Nichols - International**  
**Jared Richardson - Club Service**  
**Kevin McNamara - Community**  
**Brandon Corse - Youth in Service**

### Permanent

**Conrad Heede, PDG**  
**Walt Milner, PDG**  
**Tim Smith, PDG**

### Special Thanks to our Caterers:

Casey Owens, Owner

**Bartley's BBQ**  
**Taste of Texas**

413 E. Northwest Highway, Grapevine, TX 76051  
(817) 481-3212

## Grapevine News & Notes From the President



**RYLA CHALLENGE** - This year we sponsored seven RYLA campers. Following a presentation by the students, **Margie Salame** CHALLENGED the Grapevine Rotary Club Members to match her \$100 contribution to our RYLA account in order to open the door for more students to attend during the 2016-17 year. Wouldn't it be wonderful to sponsor at least 10 campers this year during our 50th Year as the Grapevine Rotary Club!



The King of Beer **Bill Walsh** has begun signing up Rotarians to work in the **Grapefest** beverage booth on **September 16, 17 and 18**. Also note that there will be alcohol training conducted at the Lancaster Theater immediately after our Rotary meeting on August 31 for Rotarians who will be working in the beverage booth for the first time and for others who desire a refresher.



### FLAG ASSISTANCE

- Please contact Past President **LeAnn Brown** if you have a truck or access to a truck in order to provide enough trucks for each Flag Day Duty Team. She also has the updated list of Flag Duties scheduled for the next year. If you haven't seen it already, follow up with LeAnn to find the dates your are scheduled to put up and take down flags. As a reminder, all Grapevine Rotarians are expected to take part in this fund raising effort each year. If you can not fulfill your scheduled time, it is up to you to find someone else to cover your slot and then notify LeAnn of who will be there for you!

**UNDER 40'S FOR LUNCH**  
Rotary Club of Grapevine

**CONTEST GOALS**  
The purpose of our contest is to raise awareness about Rotary and to capture a new demographic of members ages 25 to 40.

**CONTEST RULES**

- The Rotarian who brings the most guest ages 25 to 40yrs will win the contest.
- For each under 40 guest, the rotarian will receive 1 point.
- The contest will run from September 7th to November 2nd.
- The Winner will be announced and REWARDED on November 16th.

**THE WINNER IS....**  
The Winner will be announced at Wednesday's lunch meeting on November 16th, 2016.

**THE PRIZE...**  
The winner will receive:  
--Bragging Rights  
--\$50 gift card  
--AND a Trophy

Rotary Club of Grapevine, Immediate Past President, Allen Barraclough



# Leadership Moment

“My mission in life is not merely to survive, but to thrive; and to do so with some passion, some compassion, some humor and some style!”

*Dr. Maya Angelou*

## Birthdays

Please join us in celebrating the Birthdays of the following members this month:



### August 2016

2	Juneria Berges
2	Jack Dortch
2	Kevin McNamara
4	Sheri Bratton
4	Angela Graves
6	Allen Barraclough
12	Laura Qualls
15	Robin Ryan
16	Marvin Balvin
16	Paul Pineider

## Anniversaries

Please join us in celebrating the anniversaries of the following members this month:

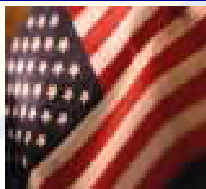
### August, 2016

1	Gary Humble (Andrea)
5	Christian Ross (Melanie)
6	Melburn Sibley (Martha)
10	Shonda Schaefer (Paul)
11	Deb Hinton (Mark)
19	Ralph Mattison (Jennifer)
22	Roger Ackley (Patti)



## Flag Days

Meet at 6:45 AM at the Depot to put out flags.  
Meet at 5:45 PM at the Depot to pick up flags.



<b>Independence Day</b>	July 4, 2016
<b>Labor Day</b>	September 5, 2016
<b>Remembering 9-11</b>	September 11, 2016
* At Memorial Site (Texan Trail & Hwy 26)	
<b>Columbus Day</b>	October 10, 2016
<b>Veteran's Day</b>	November 11, 2016
<b>Martin Luther King Day</b>	January 16, 2017
<b>President's Day</b>	February 20, 2017
<b>Peace Officers Memorial Day</b>	May 15, 2017
<b>Memorial Day</b>	May 29, 2017
<b>Flag Day</b>	June 14, 2017

## Grapevine Rotary Club 2016-2017 Committee And Chairmanships

### CLUB SERVICE

**Directors: Allison Patterson, Jared Richardson**

Programs:	Elaine Free
Public Relations/Social Media:	Deb Hinton
	Allison Patterson
Newsletter/Directory:	RaDonna Hessel
Internet Support/Website:	Allison Patterson
Holiday Party:	Alicia Barker
Historical Committee:	Lou Hillman
New Members:	Eddie Salame
Fireside Chat:	Walt Milner
Membership and Retention:	Walt Milner
	Tim Smith

Freshman Committee:	Allen Barraclough
Scholarship Fund Raising:	RaDonna Hessel
Fun Committee:	LeAnn Brown
	Robyn Scott

Family of Rotary:	Helen Jean Lucas Reed
	Teri Rhodes

Strategic Planning:	Allen Barraclough
Strategic Initiatives Committees:	
Marketing GRC	Marci Junge
Engaging Millennials	Allen Barraclough

### COMMUNITY SERVICE

**Directors: Mary Jo Tellin, Kevin McNamara**

Festivals:	Bill Walsh,
	Bret Berglund, Rick Navarro and
	Dennis Luers

Main Street Flags:	Robin Ryan,
	Bruce Stacy, Bret Berglund,
	LeAnn Brown, Ralph Mattison

Special Olympics:	Jill Bass, Robyn Scott
Student Computer Awards:	Bill Walsh
Health & Blood:	Tena Neely,
	Gary Fickes, Darlene Freed
	Roger Ackley

Middle School Adoption:	Rick Westfall
	Mary Jo Tellin

Strategic Initiatives Committees:	
More Community Service in Grapevine	Janice Kane

### VOCATIONAL SERVICE

**Directors: Rick Westfall, Robyn Scott**

Vocational Service Awards:	RaDonna Hessel
Ken Diehm Community Service Award:	
	Melburn Sibley
	Debi Meek
Spirit Awards:	Eddie Salame
RITE:	

### YOUTH IN SERVICE

**Directors: Darlene Freed, Brandon Corse**

4-Way Speech Contest:	Jennifer Brecht
	Carol Record
Scholarship Awards:	Jeff Taber
GHS & CHHS Interact	Darlene Freed
	Juneria Berges
RYLA:	Darlene Freed
Rotary Youth Exchange:	Janice Kane

### INTERNATIONAL SERVICE

**Directors: Lou Hillman, Morgan Nichols**

Rotary Foundation:	Conrad Heede
Global Grants:	Conrad Heede
Wine Fellowship:	Marci Junge
	Conrad Heede

## Rotary International Officers

**John F. Germ**

Rotary Club of Chattanooga, Tennessee  
*Rotary International President*

**Mary Ann McDuff**

The Rotary Club of Denton  
*Governor District 5790*

**Marci Junge**

The Rotary Club of Grapevine  
*Lieutenant Governor East*

**Margaret Potter**

The Rotary Club of Metroport  
*Assistant Governor District 5790*

**Conrad Heede**

**Walt Milner**  
**Tim Smith**  
GRC Past District Governors

## Nearby Clubs for Make-Up Meetings

### Arlington

Thursdays at Noon at First United Methodist Church (313 N. Center)

### Arlington North

Mondays at 11:50 AM at Olenjack's Grille (770 Road to Six Flags East, Suite 100)

### Arlington Sunrise

Fridays at 6:45 a.m. Rolling Hills Country Club, 401 East Lamar Blvd.

### Arlington Sunset

Tuesdays at 6:00 PM at J Gilligan's (407 East South Street, Arlington)

### Arlington West

Tuesdays at Noon at Shady Valley Golf Club (4001 West Park Row, Arlington)

### Colleyville

Tuesday at Noon at Ruggeri's Italian Ristorante, (32 Village Lane)

### Eagle Mountain - Saginaw

Wednesdays 7:00 AM at Hollenstein Career and Technology Center • 5501 Marine Creek Parkway, Fort Worth, TX 76179

### Flower Mound

Thursdays at Noon at Salerno's Restaurant (3407 Long Prairie Rd., F.M)

### Fort Worth East

Mondays at Noon at Meadowbrook Methodist (3900 Meadowbrook)

### Fort Worth North

Wednesdays at Noon at Joe T. Garcia's ( 2201 North Commerce, Fort Worth)

### HEB

Tuesdays, at Noon at 1st Baptist Church of Hurst (Norwood, south of Harwood)

### Irving-Las Colinas Rotary

Thursdays at Noon at Las Colinas Country Club

### Keller

Tuesday, Noon, Sky Creek Ranch Golf Club

### Lewisville

Wednesdays at Noon at Grotto Restaurant

### Lewisville Morning

Thursdays at 7:00 AM at the CCA Community Room, 200 S. Mill St.

### Metroport

Fridays at 7:00 AM at the Marriott-Solana

### Mid-Cities Pacesetters Rotary Club

Fridays, 7 AM (Texas Star Golf Course)

### Southlake

Friday at Noon at Timarron Country Club  
1400 Byron Nelson Parkway

# Grapevine Rotary Club Membership Roster

<b>ACKLEY, Roger (2)<sup>#</sup></b> ..... 612-839-3866 <i>Retired</i> ..... rogackley@msn.com	<b>GRAY, John (6)<sup>##</sup></b> ..... 817-701-6349 <i>Petroleum Refining</i> ..... jhgshelton@gmail.com	<b>PINEIDER, Paul (14)<sup>##*</sup></b> ..... 817-410-3700 <i>CPA</i> ..... p.pineider@pfacpa.com
<b>ANALOVITCH, Jay (1)<sup>#</sup></b> ..... 623-236-0724 <i>Hospice</i> ..... Holdings48@hotmail.com	<b>GRIBBLE, Rocky (15)<sup>#†</sup></b> ..... 817-481-8733 <i>Musical Entertainment</i> ..... rockyg3495@aol.com	<b>QUALLS, Laura</b> ..... 972-814-0960 <i>Travel Agent</i> ..... lqualls@dreamvacations.com
<b>BAKALO, Yuliya</b> ..... 817-908-3717 <i>Realtor</i> ..... yuliyadfw@gmail.com	<b>GUM, Rhett</b> ..... 817-602-1494 <i>Congressional Outreach</i> ..... Rhett.gum@mail.house.gov	<b>RAMSEY, Jan (1)<sup>#</sup></b> ..... 817-371-1393 <i>Real Estate</i> ..... janramsey@remax.net
<b>BALVIN, Marvin (3)<sup>##†</sup></b> ..... 817-328-1144 <i>Realtor</i> ..... marvinbalvin@kw.com	<b>HAWKINS, Shawn</b> ..... 817-821-8966 <i>Computer Consulting</i> ..... Shawn@bdunn.com	<b>RECORD, Carol Ann (20)<sup>##*</sup></b> ..... 817-488-1008 <i>Pastor</i> ..... revcarol@flash.net
<b>BARKER, Alicia</b> ..... 817-673-1561 <i>Office Furniture Sales</i> ..... ahhbttb@verizon.net	<b>HEEDE, Conrad (41) PDG<sup>##*</sup></b> ..... 817-235-8110 <i>Real Estate Mgt.</i> ..... ccheede@aol.com	<b>REED, Helen Jean Lucas Reed<sup>#</sup></b> ..... 817-329-4776 <i>Public Relations</i> ..... hlreed4@msn.com
<b>BARRACLOUGH, Allen (15)<sup>##*</sup></b> ..... 817-300-9327 <i>Training - Org. Dev.</i> ..... abear727@aol.com	<b>HESSEL, RaDonna (14)<sup>##†</sup></b> ..... 817 481-1522 <i>Chamber of Commerce CEO</i> ..... RaDonna@GrapevineChamber.org	<b>RICHARDSON, Jared</b> ..... 214695-2733 <i>Sales Manager</i> ..... jbrichardson@sewell.com
<b>BASS, Jill<sup>#</sup></b> ..... 469-814-2547 <i>Administrator/PT</i> ..... Jill.bass@baylorhealth.edu	<b>HILLMAN, Lou (31)<sup>##†*</sup></b> ..... 817-481-2573 <i>Real Estate</i> ..... Lou@BHSLH.com	<b>RHODES, Teri (3)<sup>#</sup></b> ..... 817-797-5465 <i>Realtor</i> ..... TeriRhodes@msn.com
<b>BELOFF III, Alex (47)<sup>#</sup></b> ..... 817-556-1233 <i>Sales/Training</i> ..... alexbeloff@verizon.net	<b>HINTON, Deb</b> ..... 817-657-4772 <i>Retired</i> ..... mardebev@verizon.net	<b>ROBINSON, Paul<sup>#</sup></b> ..... 682-234-4992 <i>Orthodontist</i> ..... paulrobinson_dmd@yahoo.com
<b>BERGES, Juneria (1)<sup>#</sup></b> ..... 972-304-4368 <i>Non-Profit E.D.</i> ..... jbeddr@gmail.com	<b>HORAK, Curtis</b> ..... 972-302-1907 <i>Sign Co. Owner</i> ..... curt@prioritysignsandgraphics.com	<b>RODRIGUEZ, Jesse</b> ..... 817-707-7600 <i>Self-Employed</i> ..... cmredu@gmail.com
<b>BERGLUND, Bret (2)<sup>##†</sup></b> ..... 817-455-1241 <i>Service Manager</i> ..... babgsxr@gmail.com	<b>HUFFMAN, Darrell<sup>#†</sup></b> ..... 817-366-5271 <i>Deputy Constable</i> ..... dwh5122@msn.com	<b>RODRIGUEZ, Nadine (H)</b> ..... 817-410-3583 <i>Events Crd.</i> ..... nrodriguez@grapevinetexasusa.gov
<b>BLEDSE, Juli</b> ..... 817-300-7159 <i>Residential Realtor</i> ..... juli@jubilbedse.com	<b>HUMBLE, Gary<sup>#</sup></b> ..... 214-708-8091 <i>Entrepreneur</i> ..... me@garyhumble.com	<b>ROSS, Christian</b> ..... 817-601-5019 <i>Product Developer</i> ..... hello@eightyniney.com
<b>BOHSALI-GOURY, Yasmine (H)<sup>#</sup></b> ..... 817-247-9895 <i>Restaurateur</i> ..... yasmine316@hotmail.com	<b>HUTTON, Traci D. (5)<sup>#</sup></b> ..... 817-442-9352 <i>Attorney</i> ..... Traci@TraciHutton.com	<b>RUMBELOW, Bruno (1)<sup>#†</sup></b> ..... 817-410-3104 <i>Municipal Admin.</i> ..... brumbelow@grapevinetexas.gov
<b>BRATTON, Sheri (1)</b> ..... 817-908-9767 <i>Marketing / Admin</i> ..... Srf0001@hotmail.com	<b>JANICEK, Steve<sup>#</sup></b> ..... 682-888-6506 <i>Corporate Transportation</i> ..... swjanicek@aol.com	<b>RYAN, Robin (4)<sup>##†</sup></b> ..... 817-251-5501 <i>Superintendent</i> ..... Robin.Ryan@GCISD.net
<b>BRECHT, Jennifer<sup>#</sup></b> ..... 817-296-8675 <i>Insurance</i> ..... jbrecht@brechtassoc.com	<b>JAY, Randy</b> ..... 817-798-6246 <i>Bank Lending</i> ..... randy.jay@go2fibt.com	<b>SALAME, Eddie (3)<sup>#</sup></b> ..... 817-410-3225 <i>Police Administration</i> ..... esalame@grapevinetexas.gov
<b>BROWN, Darrell</b> ..... 817-564-3443 <i>Firefighter</i> ..... DBrown@GrapevineTexas.gov	<b>JOHNSTON, Don<sup>#</sup></b> ..... 682-325-5202 <i>Banking</i> ..... djohnston@nstarbank.com	<b>SALAME, Margie</b> ..... 817-366-5499 <i>Realtor</i> ..... margiesalame@gmail.com
<b>BROWN, Kelly<sup>#</sup></b> ..... 817-481-7025 <i>Chiropractor</i> ..... brownchiropracticca@gmail.com	<b>JONES, Dick (E)<sup>#</sup></b> ..... 817-421-4617 <i>Pest Control Owner</i> ..... Djpj57@verizon.net	<b>SAYERS, Merlyn<sup>#</sup></b> ..... 817-412-5101 <i>Blood Bank Mgt.</i> ..... msayers@carterbloodcare.org
<b>BROWN, LeAnn (3)<sup>#</sup></b> ..... 817-313-3107 <i>Real Estate</i> ..... labrown@silveroakcre.com	<b>JUNGE, Marci (27)<sup>##*</sup></b> ..... 817-366-6138 <i>Interior Designer</i> ..... mjunge@aol.com	<b>SCHAEFER, Shonda<sup>#</sup></b> ..... 817-657-1017 <i>Non-Profit Mgt.</i> ..... sschaefer@gracegrapevine.org
<b>BROWN, Michael (1)<sup>#</sup></b> ..... 817-874-7817 <i>Financial Advisor</i> ..... Michael.Brown@edwardjones.com	<b>KANE, Janice<sup>#</sup> (6)</b> ..... 817-251-5480 <i>Foundation E.D.</i> ..... Janice.kane@gcisd.net	<b>SCHRIEVER, Stacy<sup>#</sup></b> ..... 817-707-5454 <i>Mortgage Banker</i> ..... stacylynnschriever@gmail.com
<b>BUFFINGO, Bill<sup>#</sup></b> ..... 214-2058-7408 <i>Video Productions</i> ..... auditvisuals@gmail.com	<b>KELLY, Mark Lucas<sup>#</sup> (1)</b> ..... 817-313-8288 <i>Funeral Home</i> ..... mkelly@familyowned.net	<b>SCHULTZ, Kirk</b> ..... 515-250-9166 <i>Trainer</i> ..... kirkschultz@gmail.com
<b>BURRUS, Bob (E)<sup>#</sup></b> ..... 817-223-5406 <i>Retired</i> ..... bobburrus7@gmail.com	<b>KERCHEVAL, Kirby</b> ..... 817-328-1924 <i>Commercial Lending</i> ..... KirbyKercheval@gmail.com	<b>SCOTT, Robyn<sup>†</sup></b> ..... 817-488-2733 <i>Financial Advisor</i> ..... Robyn.scott@edwardjones.com
<b>CARNES, Matt<sup>#</sup></b> ..... 817-722-8811 <i>Marketing</i> ..... matt.carnes@verizon.net	<b>KIMBRO, Marshall</b> ..... 817-287-5616 <i>Banker</i> ..... marshall.kimbrow@legacytexas.com	<b>SHERMAN, Judy (10)<sup>##*</sup></b> ..... 817-366-1119 <i>Financial Advisor</i> ..... judysherman_2000@yahoo.com
<b>COPPAGE, Paul (11)<sup>##†</sup></b> ..... 214-226-0013 <i>Real Estate</i> ..... paulcoppage@yahoo.com	<b>LEASE, Carolyn<sup>#</sup></b> ..... 817-501-8596 <i>Sales</i> ..... Carolyn@cavnarsmith.com	<b>SIBLEY, Melburn (E)<sup>##*</sup></b> ..... 817-329-0821 <i>Pastor</i> ..... jmelburn@aol.com
<b>CORSE, Brandon<sup>+</sup></b> ..... 817-608-6868 <i>Financial Advisor</i> ..... brandon.corse@edwardjones.com	<b>LUERS, Dennis<sup>##*</sup></b> ..... 817-832-5886 <i>Real Estate</i> ..... Dennisluers@verizon.net	<b>SIGLER, JR., E.A. (E)<sup>#</sup></b> ..... 817-267-6426 <i>School Administrator</i> ..... esigler1@att.net
<b>COY, Chris (8)<sup>#</sup></b> ..... 817-689-9899 <i>Corporate Finance</i> ..... chriscoydfw@gmail.com	<b>LUERS, Jan Smith (2)<sup>#</sup></b> ..... 214-202-8700 <i>Event Planning</i> ..... rbsjss@verizon.net	<b>SLECHTA, Paul<sup>†</sup></b> ..... 817-488-4151 <i>Embroidery/Owner</i> ..... paul@pandasportswear.com
<b>COY, Traci</b> ..... 817-729-0963 <i>CPA</i> ..... traci@tracicoy CPA.com	<b>MANGRUM, Michael</b> ..... 469-989-7371 <i>Financial Advisor</i> ..... mmangrum@wradvisors.com	<b>SMITH, Peggy<sup>#</sup> (H)</b> ..... 817-424-1699 <i>Retired</i> ..... MaryJo@GrapevineChamber.org
<b>DAVIS, Ken</b> ..... 817-846-7897 <i>Automotive Sales</i> ..... Ken.Davis@Grubbs.com	<b>MATTISON, Ralph<sup>#</sup></b> ..... 972-897-0117 <i>Winery Owner</i> ..... MattisonR@hotmail.com	<b>SMITH, Tim PDG (3)<sup>##*</sup></b> ..... 405-207-1019 <i>HR: Training &amp; Dev.</i> ..... tansonsmith@gmail.com
<b>DODSON, Lee<sup>#</sup></b> ..... 817-481-1036 <i>Dentist</i> ..... lcdds@aol.com	<b>MCHUGH, Angela</b> ..... 817-477-7424 <i>Owner</i> ..... angelamchugh737@yahoo.com	<b>STACY, Bruce (2)<sup>#</sup></b> ..... 337-296-5475 <i>Retired</i> ..... Abs.cfs@verizon.net
<b>DORTCH, Jack (39)<sup>#</sup></b> ..... 817-481-1421 <i>Insurance</i> ..... jdortch@farmersagent.com	<b>MCNAMARA, Kevin</b> ..... 972-921-5835 <i>Restaurant Owner</i> ..... Kevin@WiseGuysTX.com	<b>STEWART, Roy (E)<sup>##*</sup></b> ..... 817-481-5824 <i>Real Estate Dev.</i> ..... roy_stewart@peoplepc.com
<b>ECKMANN, Pamela</b> ..... 817-251-5962 <i>Chiropractor</i> ..... DrPamEck@yahoo.com	<b>MEEK, Debi<sup>#</sup></b> ..... 817-800-0804 <i>Retail Mgt.</i> ..... debimeek@hotmail.com	<b>TABER, Jeff (3)</b> ..... 405-203-5250 <i>Business Consultant</i> ..... jefftaber@hotmail.com
<b>FANTZ, Debra</b> ..... 817-310-3064 <i>Independent Sales Dir.</i> ..... debfantz@aol.com	<b>MILLER, Tom</b> ..... 817-706-8733 <i>Owner</i> ..... tom@theliftoffice.com	<b>TATE, William "Bill"<sup>#</sup> †</b> ..... 817-488-8668 <i>Attorney</i> ..... wdteate@verizon.net
<b>FICKES, Gary<sup>#</sup></b> ..... 817-581-3600 <i>County Government</i> ..... gfickes650@aol.com	<b>MILNER, Walt (30) PDG<sup>##*</sup></b> ..... 817-283-6450 <i>Banker</i> ..... WMilner744@aol.com	<b>TELLIN, Mary Jo</b> ..... 817-807-3962 <i>Chamber of Commerce</i> ..... MaryJo@GrapevineChamber.org
<b>FINDLAY, Debra</b> ..... 626-201-8105 <i>CPA</i> ..... debrafindlay@sbcglobal.net	<b>MITCHELL, Kevin<sup>†</sup></b> ..... 817-253-9327 <i>Parks Director</i> ..... KMitchell@grapevinetexas.gov	<b>THOMAS, Jake</b> ..... 972-891-2504 <i>Auto Dent Removal</i> ..... Jake@Dentless.net
<b>FOLIARD, Edward</b> ..... 708-305-4721 <i>Retired Fire Chief</i> ..... EdwardFolliard@gmail.com	<b>MOLLET, John<sup>#</sup></b> ..... 817-481-2559 <i>Pastor</i> ..... JohnM@FUMCG.org	<b>TORRES-LEPP, Amy</b> ..... 214-803-2765 <i>Title Insurance</i> ..... Amy@alamotitletexas.com
<b>FOX, Todd</b> ..... 972-835-9504 <i>Banker</i> ..... todd.fox@frostbank.com	<b>NAVARRO, Richard</b> ..... 888-505-2803 <i>Consultant</i> ..... Creativemind.nav@gmail.com	<b>VAN DYKE, Bob (23)<sup>##*</sup></b> ..... 817-576-2323 <i>Charter Financial Consultant</i> ..... Robert.VanDyke@Prudential.com
<b>FRANCISCO, Bill (1)<sup>#</sup></b> ..... 817-946-7785 <i>Sales Management</i> ..... bfrancisco@att.net	<b>NEAL, Nathaniel (H)</b> ..... 817-329-9911 <i>Printing</i> ..... neal@njgdinc.com	<b>WALSH, Bill (10)<sup>#</sup></b> ..... 817-421-0197 <i>Personnel Mgt.</i> ..... billwalshxt@verizon.net
<b>FRANK, Wayne Paul (6)<sup>##*</sup></b> ..... 817-949-2161 <i>Attorney</i> ..... wpfatty@aol.com	<b>NEALY, Tina<sup>#</sup></b> ..... 817-329-1668 <i>Events Planning</i> ..... weddings@paradisecovetx.com	<b>WEBSTER, Terry (E)<sup>#</sup></b> ..... 214-706-8080 <i>Banker</i> ..... terry.webster@bbvacompass.com
<b>FRANKS, Jon Michael<sup>#</sup></b> ..... 817-329-5573 <i>Attorney</i> ..... jonmfranks5@gmail.com	<b>NICHOLS, Morgan</b> ..... 805-368-3001 <i>Financial Advisor</i> ..... morgan.nichols@ampf.com	<b>WESTFALL, Rick</b> ..... 817-925-9063 <i>Education Administration</i> ..... Rick.Westfall@GCISD.net
<b>FREE, Elaine (28)<sup>##*</sup></b> ..... 214-534-1760 <i>Ed. Foundation Consulting</i> ..... Elaineefree1@charter.net	<b>NIX, David (H)</b> ..... 817-975-7720 <i>Owner</i> ..... redz28@att.net	<b>WHITE, MATTHEW (H)</b> ..... 254-368-6725 <i>School Administration</i> ..... Matthew.White@gcisd.net
<b>FREED, Darlene<sup>#</sup></b> ..... 817-480-6434 <i>Real Estate</i> ..... Jfreed1@hotmail.com	<b>NORTON, Bill</b> ..... 817-498-9159 <i>Technical Analyst</i> ..... wnorton7@hotmail.com	<b>WHITLEY, Rob<sup>#</sup></b> ..... 817-296-1659 <i>Commercial Cleaning</i> ..... rwhitleyent@aol.com
<b>GILLETTE, Edie (E)<sup>##*</sup></b> ..... 817-481-5050 <i>Public Relations</i> ..... edie_gw@verizon.net	<b>O'DANIEL, Bill</b> ..... 817-310-3555 <i>Banker</i> ..... bodaniel@bnkwest.com	<b>WILBANKS, Paula (H)</b> ..... 817-223-4105 <i>Retired Teacher</i> ..... gigipw@aol.com
<b>GOBEN, Allen</b> ..... 817-515-6670 <i>College Admin.</i> ..... Allen.Goben@tccd.edu	<b>O'DELL, Duff (10)<sup>##†</sup></b> ..... 214-478-3750 <i>Sales/Marketing</i> ..... pdodell@verizon.net	<b>WOODS, Maybelle<sup>#</sup> (H)</b> ..... 817-481-3846 <i>Retired</i> ..... Maybelle@grapevinechamber.org
<b>GRAVES, Allan<sup>#</sup></b> ..... 817-552-7742 <i>Attorney</i> ..... ag@all-lawfirm.com	<b>PATTERSON, Allison (2)<sup>##*</sup></b> ..... 817-896-1560 <i>Health Management</i> ..... Allison@cover-tek.com	
<b>GRAVES, Angela (1)<sup>#</sup></b> ..... 817-553-2500 <i>Banking</i> ..... Angela.Graves@go2fibt.com		

\* Indicates a new Red Badge member (127)