



# Grapevine Rotary Club

Grapevine, Texas • Chartered 1967  
District #5790 • Club #1793  
[www.grapevinerotary.com](http://www.grapevinerotary.com)

**July 13, 2016**

**Meeting Time:**  
Wednesday Noon  
Lancaster Theater  
308 South Main

## Coming Events

**07/14 Rotary Board Meeting**  
4:00 p.m.  
Grapevine Chamber

**07/20 Rotary Foundation Meeting**  
6:00 p.m. Main Street Bakery

Log on to our Website:  
[www.GrapevineRotary.com](http://www.GrapevineRotary.com)

Like us on Facebook at:  
<http://www.facebook.com/pages/Grapevine-Rotary>

## Special Thanks to

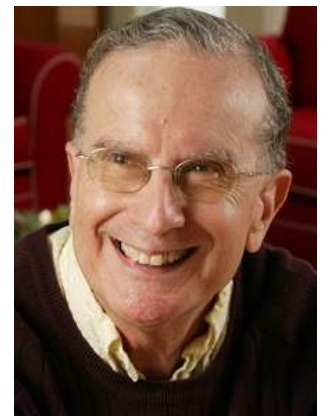
**Rotary Bulletin Sponsor**  
Nathaniel Neal, Jake Garcia & Oscar Romero  
**NJ Graphic Design Inc.**  
203 E. Worth St., Grapevine, TX 76051  
(817)329-9911

For bulletin updates, contact RaDonna Hessel:  
[RaDonna@GrapevineChamber.org](mailto:RaDonna@GrapevineChamber.org)

## **PROGRAM - The Presidential Campaign**

### **Allan Saxe**

Allan Saxe is the recipient of University of Texas System Board of Regents Outstanding Teacher Award. He was born in Oklahoma and is a generally all-round good guy.



Saxe is an American political scientist, author, lecturer, radio commentator, philanthropist, and university professor. He is an Associate Professor of Political Science at the University of Texas at Arlington (UTA), where he has been a faculty member since 1965.

Saxe was born in Oklahoma City, Oklahoma and earned his Ph.D in political science at the University of Oklahoma in the year 1969.

Saxe has published one book titled Politics of Arlington, Texas: An Era of Continuity and Growth and co-authored one other titled American Government: A Core Approach. He has also been published in several political journals and magazine articles.

Saxe has been given a rating of 4.4 out of 5 on Rate My Professors. He has also received numerous awards for his teaching. In 1972, he was named to the UTA Chancellor's Council Award (formerly the AMOCO Award). In 1986, 2007, and 2008 he was named to the Gertrude Golladay Memorial Award for Outstanding Teaching in the College of Liberal Arts

## **Upcoming Program**

**July 20, 2016**

*Brian Nichols - Cybersecurity*

**July 27, 2016**

*Sterling Hilliard - All Things Millennial*

**August 3, 2016**

*Juneria Berges - Club Assembly*

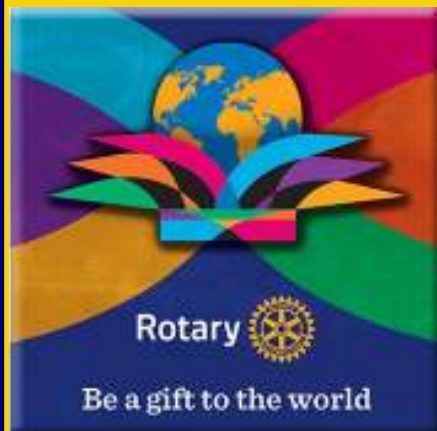
**August 10, 2016**

*Darlene Freed - Camp RYLA*

## **Rotary Four-Way Test**

**Of the things we think, say or do:**

1. Is it the **TRUTH**?
2. Is it **FAIR** to all concerned?
3. Will it build **GOODWILL** and **BETTER FRIENDSHIPS**?
4. Will it be **BENEFICIAL** to all concerned?





# Leadership

## Club Officers 2016-2017

**Juneria Berges**  
*President*

**Eddie Salame**  
*Vice President & President Elect*

**Janice Kane**  
*Vice President & President Elect  
Nominee*

**LeAnn Brown**  
*Immediate Past President*

**Janice Kane**  
*Secretary*

**Kirby Kercheval**  
*Treasurer*

**Wayne Paul Frank**  
*Sergeants at Arms*

**Allen Barraclough**  
*Strategic Planning*

...

## Club Directors

### 2016-2017

**Rick Westfall - Vocational**  
**Lou Hillman - International**  
**Allison Patterson - Club Service**  
**Mary Jo Tellin - Community**  
**Darlene Freed - Youth in Service**

### 2017-2018

**Robyn Scott - Vocational**  
**Morgan Nichols - International**  
**Jared Richardson - Club Service**  
**Kevin McNamara - Community**  
**Brandon Corse - Youth in Service**

### Permanent

**Conrad Heede, PDG**  
**Walt Milner, PDG**  
**Tim Smith, PDG**

### Special Thanks to our Caterers:

Casey Owens, Owner



413 E. Northwest Highway, Grapevine, TX 76051  
(817) 481-3212

## Grapevine News & Notes

Rotary District 5790 Foundation-Membership Seminar

**Saturday, August 27, 20-2016**

Northside Baptist Church  
910 North Main Street  
Weatherford, TX

**8:30 AM- 2:00 PM**

Cost: \$20 per person - Includes continental breakfast and lunch.



The Foundation-Membership seminar has something for everyone.

The goal is for every club to come and bring their foundation and membership teams to learn together!

Feature Speakers  
Project Displays

Engaging and Informative Break out Sessions  
Announcement of 2016 Grant Awards  
Live Music at Lunch  
.....and much more!!!

Contact Juneria Berges for registration and other information.

**Welcome** New Rotarian **Mr. Ken Davis** to the Grapevine Rotary Club.  
His sponsor is Alex Berloff, III.

## Notes from the President....

Thanks to Dick Jones for the idea to build me a platform so all the members could see me. Especially those sitting at the back tables actually saw me for the first time while behind the podium (Ha)! Bret Berglund built it with safety first. My gratitude to each of you!



Congratulations to Allison Patterson who actually got a photo of 9 of our scholarship recipients with an article in the "Fort Worth Star Telegram" Colleyville Section! Yea! Thank you for all of your hard work!

Sgt.-at-Arms Wayne Paul Frank kicked off the year in grand style!

Rhett Gum provided us more information regarding himself and family during his 2 minute Classification Talk which all present enjoyed.

The 2016-17 Proposed Grapevine Rotary Budget was distributed and unanimously approved.

## Leadership Moment

“There’s a humorous side to every situation. The challenge is to find it.”

*George Carlin*

## Birthdays

Please join us in celebrating the Birthdays of the following members this month:

July, 2016

7	Lou Hillman
25	Helen Jean Lucas Reed
26	Tom Miller
26	Shonda Schaefer
26	Kirk Schultz
28	Walt Milner
29	Duff O’Dell



## Anniversaries

Please join us in celebrating the anniversaries of the following members this month:

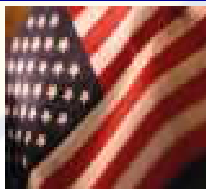
July, 2016

3	Marci Junge (Ron)
3	Janice Kane (John)
7	Laura Qualls (Kelly)
13	John Gray (Charna)
17	Paul Robinson (Melanie)
24	RaDonna Hessel (Marvin)
25	Jesse Rodriguez (Joanne)
27	Chris & Traci Coy



## Flag Days

Meet at 6:45 AM at the Depot to put out flags.  
Meet at 5:45 PM at the Depot to pick up flags.



<b>Independence Day</b>	July 4, 2016
<b>Labor Day</b>	September 5, 2016
<b>Remembering 9-11</b>	September 11, 2016
* At Memorial Site (Texan Trail & Hwy 26)	
<b>Columbus Day</b>	October 10, 2016
<b>Veteran’s Day</b>	November 11, 2016
<b>Martin Luther King Day</b>	January 16, 2017
<b>President’s Day</b>	February 20, 2017
<b>Peace Officers Memorial Day</b>	May 15, 2017
<b>Memorial Day</b>	May 29, 2017
<b>Flag Day</b>	June 14, 2017

## Grapevine Rotary Club 2016-2017 Committee And Chairmanships

### CLUB SERVICE

**Directors:** Allison Patterson, Jared Richardson

Programs:	Elaine Free
Public Relations/Social Media:	Deb Hinton
	Allison Patterson
Newsletter/Directory:	RaDonna Hessel
Internet Support/Website:	Allison Patterson
Holiday Party:	RaDonna Hessel
Historical Committee:	Lou Hillman
New Members:	Eddie Salame
Fireside Chat:	Walt Milner
Membership and Retention:	Walt Milner
	Tim Smith

Freshman Committee:	Allen Barraclough
Scholarship Fund Raising:	Alicia Barker
Fun Committee:	LeAnn Brown
	Robyn Scott

Family of Rotary:	Helen Jean Lucas Reed
	Teri Rhodes
Strategic Planning:	Allen Barraclough
Strategic Initiatives Committees:	
Marketing GRC	Marci Junge
Engaging Millennials	Allen Barraclough

### COMMUNITY SERVICE

**Directors:** Mary Jo Tellin, Kevin McNamara

Festivals:	Bill Walsh
Main Street Flags:	Robin Ryan,
	Bruce Stacy, Bret Berglund,
	LeAnn Brown, Ralph Mattison
Special Olympics:	Jill Bass, Robyn Scott
Student Computer Awards:	Bill Walsh
Health & Blood:	Tena Neely,
	Gary Fickes, Darlene Freed
	Roger Ackley
Middle School Adoption:	Rick Westfall
	Mary Jo Tellin

Strategic Initiatives Committees:	
More Community Service in Grapevine	Janice Kane

### VOCATIONAL SERVICE

**Directors:** Rick Westfall, Robyn Scott

Vocational Service Awards:	RaDonna Hessel
Ken Diehm Community Service Award:	
	Melburn Sibley
Spirit Awards:	Debi Meek
RITE:	Eddie Salame

### YOUTH IN SERVICE

**Directors:** Darlene Freed, Brandon Corse

4-Way Speech Contest:	Jennifer Brecht
	Carol Record
Scholarship Awards:	Jeff Taber
GHS & CHHS Interact	Darlene Freed
	Juneria Berges
RYLA:	Darlene Freed
Rotary Youth Exchange:	Janice Kane

### INTERNATIONAL SERVICE

**Directors:** Lou Hillman, Morgan Nichols

Rotary Foundation:	Conrad Heede
Global Grants:	Conrad Heede
Wine Fellowship:	Marci Junge
	Conrad Heede

## Rotary International Officers

**K.R. “Ravi” Ravindran**

Rotary Club of Colombo, Western Province, Sri Lanka

*Rotary International President*

**Troy Secord**

The Rotary Club of Wichita Falls North  
*Governor District 5790*

**Marci Junge**

The Rotary Club of Grapevine  
*Assistant Governor*

**Conrad Heede**

**Walt Milner**

**Tim Smith**

## Nearby Clubs for Make-Up Meetings

### Arlington

Thursdays at Noon at First United Methodist Church (313 N. Center)

### Arlington North

Mondays at 11:50 AM at Olenjack’s Grille (770 Road to Six Flags East, Suite 100)

### Arlington Sunrise

Fridays at 6:45 a.m. Rolling Hills Country Club, 401 East Lamar Blvd.

### Arlington Sunset

Tuesdays at 6:00 PM at J Gilligan’s (407 East South Street, Arlington)

### Arlington West

Tuesdays at Noon at Shady Valley Golf Club (4001 West Park Row, Arlington)

### Colleyville

Tuesday at Noon at Ruggeri’s Italian Ristorante, (32 Village Lane)

### Eagle Mountain - Saginaw

Wednesdays 7:00 AM at Hollenstein Career and Technology Center • 5501 Marine Creek Parkway, Fort Worth, TX 76179

### Flower Mound

Thursdays at Noon at Salerno’s Restaurant (3407 Long Prairie Rd., F.M)

### Fort Worth East

Mondays at Noon at Meadowbrook Methodist (3900 Meadowbrook)

### Fort Worth North

Wednesdays at Noon at Joe T. Garcia’s ( 2201 North Commerce, Fort Worth)

### HEB

Tuesdays, at Noon at 1st Baptist Church of Hurst (Norwood, south of Harwood)

### Irving-Las Colinas Rotary

Thursdays at Noon at Las Colinas Country Club

### Keller

Tuesday, Noon, Sky Creek Ranch Golf Club

### Lewisville

Wednesdays at Noon at Grotto Restaurant

### Lewisville Morning

Thursdays at 7:00 AM at the CCA Community Room, 200 S. Mill St.

### Metroport

Fridays at 7:00 AM at the Marriott-Solana

### Mid-Cities Pacesetters Rotary Club

Fridays, 7 AM (Texas Star Golf Course)

### Southlake

Friday at Noon at Timarron Country Club  
1400 Byron Nelson Parkway

# Grapevine Rotary Club Membership Roster

<b>ACKLEY, Roger</b> (1) <sup>#</sup> ..... 612-839-3866 <i>Retired</i> rogackley@msn.com	<b>GRIBBLE, Rocky</b> (14) <sup>#T</sup> ..... 817-481-8733 <i>Musical Entertainment</i> rockyg3495@aol.com	<b>RECORD, Carol Ann</b> (19) <sup>##</sup> ..... 817-488-1008 <i>Pastor</i> revcarol@flash.net
<b>ANALOVITCH, Jay</b> <sup>#</sup> ..... 623-236-0724 <i>Hospice</i> Holdings48@hotmail.com	<b>GUM, Rhett</b> ..... 817-602-1494 <i>Congressional Outreach</i> Rhett.gum@mail.house.gov	<b>REED, Helen Jean Lucas Reed</b> <sup>#</sup> ..... 817-329-4776 <i>Public Relations</i> hlreed4@msn.com
<b>ANTINONE, Patrick</b> ..... 817-919-4122 <i>Education Admin.</i> Patrick.Antinone@gcisd.net	<b>HAWKINS, Shawn</b> ..... 817-821-8966 <i>Computer Consulting</i> Shawn@bdunn.com	<b>RICHARDSON, Jared</b> ..... 214695-2733 <i>Sales Manager</i> jbrichardson@sewell.com
<b>BAKALO, Yuliya</b> ..... 817-908-3717 <i>Realtor</i> yuliya@dfw@gmail.com	<b>HEEDE, Conrad</b> (40) PDG <sup>##</sup> ..... 817-235-8110 <i>Real Estate Mgt.</i> ccheede@aol.com	<b>RHODES, Teri</b> (2) <sup>#</sup> ..... 817-797-5465 <i>Realtor</i> TeriRhodes@msn.com
<b>BALVIN, Marvin</b> (2) <sup>##T</sup> ..... 817-328-1144 <i>Realtor</i> marvinbalvin@kw.com	<b>HESEL, RaDonna</b> (14) <sup>##T</sup> ..... 817 481-1522 <i>Chamber of Commerce CEO</i> RaDonna@GrapevineChamber.org	<b>ROBINSON, Paul</b> <sup>#</sup> ..... 682-234-4992 <i>Orthodontist</i> paulrobinson_dmd@yahoo.com
<b>BARKER, Alicia</b> ..... 817-673-1561 <i>Office Furniture Sales</i> ahhbttb@verizon.net	<b>HILLMAN, Lou</b> (30) <sup>##T+</sup> ..... 817-481-2573 <i>Real Estate</i> Lou@BHHSLLH.com	<b>RODRIGUEZ, Jesse</b> ..... 817-707-7600 <i>Self-Employed</i> cmredu@gmail.com
<b>BARRACLOUGH, Allen</b> (14) <sup>##</sup> ..... 817-300-9327 <i>Training - Org. Dev.</i> abear727@aol.com	<b>HINTON, Deb</b> ..... 817-657-4772 <i>Retired</i> mardebev@verizon.net	<b>RODRIGUEZ, Nadine</b> (H) ..... 817-410-3583 <i>Events Crd.</i> nrodriguez@grapevintexasusa.gov
<b>BASS, Jill</b> <sup>#</sup> ..... 469-814-2547 <i>Administrator/PT</i> Jill.bass@baylorhealth.edu	<b>HORAK, Curtis</b> ..... 972-302-1907 <i>Sign Co. Owner</i> curt@prioritysignsandgraphics.com	<b>ROSS, Christian</b> ..... 817-601-5019 <i>Product Developer</i> hello@eightyninety.com
<b>BELOFF III, Alex</b> (46) <sup>#+</sup> ..... 817-556-1233 <i>Sales/Training</i> alexbeloff@verizon.net	<b>HUFFMAN, Darrell</b> <sup>#T</sup> ..... 817-366-5271 <i>Deputy Constable</i> dwh5122@msn.com	<b>RUMBELOW, Bruno</b> (1) <sup>#T</sup> ..... 817-410-3104 <i>Municipal Admin.</i> brumbelow@grapevintexas.gov
<b>BERGES, Jeneria</b> <sup>#</sup> ..... 972-304-4368 <i>Non-Profit E.D.</i> jbeddr@gmail.com	<b>HUMBLE, Gary</b> <sup>#</sup> ..... 817-798-8091 <i>Entrepreneur</i> me@garyhumble.com	<b>RYAN, Robin</b> (4) <sup>#T</sup> ..... 817-251-5501 <i>Superintendent</i> Robin.Ryan@GCISD.net
<b>BERGLUND, Bret</b> (2) <sup>#T</sup> ..... 817-455-1241 <i>Service Manager</i> babgsxr@gmail.com	<b>HUTTON, Traci D.</b> (5) <sup>#</sup> ..... 817-442-9352 <i>Attorney</i> Traci@TraciHutton.com	<b>SALAME, Eddie</b> (3) <sup>#</sup> ..... 817-410-3225 <i>Police Administration</i> esalame@grapevintexas.gov
<b>BOHSALI-GOURY, Yasmine</b> (H) <sup>#</sup> ..... 817-247-9895 <i>Restaurateur</i> yasmine316@hotmail.com	<b>JANICEK, Steve</b> <sup>#</sup> ..... 682-888-6506 <i>Corporate Transportation</i> swjanicek@aol.com	<b>SALAME, Margie</b> ..... 817-366-5499 <i>Realtor</i> margiesalame@gmail.com
<b>BRATTON, Sheri</b> ..... 817-908-9767 <i>Marketing / Admin</i> Srf0001@hotmail.com	<b>JAY, Randy</b> ..... 817-798-6246 <i>Bank Lending</i> randy.jay@go2fbt.com	<b>SAYERS, Merlyn</b> <sup>#</sup> ..... 817-412-5101 <i>Blood Bank Mgt.</i> msayers@carterbloodcare.org
<b>BRECHT, Jennifer</b> <sup>#</sup> ..... 817-296-8675 <i>Insurance</i> jbrecht@brechtassoc.com	<b>JOHNSTON, Don</b> <sup>#</sup> ..... 682-325-5202 <i>Banking</i> djohnston@nstarbank.com	<b>SCHAEFER, Shonda</b> <sup>#</sup> ..... 817-657-1017 <i>Non-Profit Mgt.</i> sschaefer@gracegrapevine.org
<b>BROWN, Darrell</b> ..... 817-564-3443 <i>Firefighter</i> DBrown@GrapevineTexas.gov	<b>JONES, Dick</b> (E) <sup>#</sup> ..... 817-421-4617 <i>Pest Control Owner</i> Djpp57@verizon.net	<b>SCHRIEVER, Stacy</b> <sup>#T</sup> ..... 817-707-5454 <i>Mortgage Banker</i> stacylynnschriever@gmail.com
<b>BROWN, Kelly</b> <sup>#</sup> ..... 817-481-7025 <i>Chiropractor</i> brownchiropracticca@gmail.com	<b>JUNGE, Marci</b> (26) <sup>##</sup> ..... 817-366-6138 <i>Interior Designer</i> mjunge@aol.com	<b>SCHULTZ, Kirk</b> ..... 515-250-9166 <i>Trainer</i> kirkschultz@gmail.com
<b>BROWN, LeAnn</b> (2) <sup>#</sup> ..... 817-313-3107 <i>Real Estate</i> labrown@silveroakcre.com	<b>KANE, Janice</b> <sup>#</sup> (5) ..... 817-251-5480 <i>Foundation E.D.</i> Janice.kane@gcisd.net	<b>SCOTT, Robyn</b> <sup>T</sup> <sup>#</sup> ..... 817-488-2733 <i>Financial Advisor</i> Robyn.scott@edwardjones.com
<b>BROWN, Michael</b> (1) <sup>#</sup> ..... 817-874-7817 <i>Financial Advisor</i> Michael.Brown@edwardjones.com	<b>KELLY, Mark Lucas</b> <sup>#</sup> (1) ..... 817-313-8288 <i>Funeral Home</i> mkelly@familyowned.net	<b>SHERMAN, Judy</b> (9) <sup>#+</sup> ..... 817-366-1119 <i>Financial Advisor</i> judysherman_2000@yahoo.com
<b>BUFFINGTON, Bill</b> <sup>#</sup> ..... 214-2058-7408 <i>Video Productions</i> auditvisuals@gmail.com	<b>KERCHEVAL, Kirby</b> ..... 817-328-1924 <i>Commercial Lending</i> KirbyKercheval@gmail.com	<b>SIBLEY, Melburn</b> (E) <sup>##</sup> ..... 817-329-0821 <i>Pastor</i> jmelburn@aol.com
<b>BURRUS, Bob</b> (E) <sup>#</sup> ..... 817-223-5406 <i>Retired</i> bobburrus7@gmail.com	<b>LEASE, Carolyn</b> <sup>#</sup> ..... 817-501-8596 <i>Sales</i> Carolyn@cavnarsmith.com	<b>SIGLER, JR., E.A.</b> (E) <sup>#</sup> ..... 817-267-6426 <i>School Administrator</i> esigler1@att.net
<b>CARNES, Matt</b> <sup>#</sup> ..... 817-722-8811 <i>Marketing</i> matt.carnes@verizon.net	<b>LUERS, Dennis</b> <sup>##</sup> ..... 817-832-5886 <i>Real Estate</i> Dennisluers@verizon.net	<b>SLECHTA, Paul</b> <sup>T</sup> ..... 817-488-4151 <i>Embroidery/Owner</i> paul@pandasportswear.com
<b>COPPAGE, Paul</b> (11) <sup>#T</sup> ..... 214-226-0013 <i>Real Estate</i> paulcoppage@yahoo.com	<b>LUERS, Jan Smith</b> (2) <sup>#</sup> ..... 214-202-8700 <i>Event Planning</i> rbsjss@verizon.net	<b>SMITH, Peggy</b> <sup>#</sup> (H) ..... 817-424-1699 <i>Retired</i>
<b>CORSE, Brandon</b> <sup>+</sup> ..... 817-608-6868 <i>Financial Advisor</i> brandon.corse@edwardjones.com	<b>MANGRUM, Michael</b> ..... 469-989-7371 <i>Financial Advisor</i> mmangrum@wradvisors.com	<b>SMITH, Tim</b> PDG (2) <sup>##</sup> ..... 405-207-1019 <i>HR: Training &amp; Dev.</i> tansonsmith@gmail.com
<b>COY, Chris</b> (8) <sup>#</sup> ..... 817-689-9899 <i>Corporate Finance</i> chriscoydfw@gmail.com	<b>MATTISON, Ralph</b> <sup>#</sup> ..... 972-897-0117 <i>Winery Owner</i> MattisonR@hotmail.com	<b>STACY, Bruce</b> (2) <sup>#</sup> ..... 337-296-5475 <i>Retired</i> Abs.cfs@verizon.net
<b>COY, Traci</b> ..... 817-729-0963 <i>CPA</i> traci@tracicoypca.com	<b>MCNAMARA, Kevin</b> ..... 972-921-5835 <i>Restaurant Owner</i> Kevin@WiseGuysTX.com	<b>STEWART, Roy</b> (E) <sup>##</sup> ..... 817-481-5824 <i>Real Estate Dev.</i> roy_stewart@peoplepc.com
<b>DAVIS, Ken</b> ..... 817-846-7897 <i>Automotive Sales</i> Ken.Davis@Grubbs.com	<b>MEEK, Debi</b> <sup>#</sup> ..... 817-800-0804 <i>Retail Mgt.</i> debimeek@hotmail.com	<b>TABER, Jeff</b> (2) ..... 405-203-5250 <i>Business Consultant</i> jefftaber@hotmail.com
<b>DODSON, Lee</b> <sup>#</sup> ..... 817-481-1036 <i>Dentist</i> lcdds@aol.com	<b>MILLER, Tom</b> ..... 817-706-8733 <i>Owner</i> tom@theliftoffice.com	<b>TATE, William "Bill"</b> <sup>#T</sup> ..... 817-488-8668 <i>Attorney</i> wdteate@verizon.net
<b>DORTCH, Jack</b> (38) <sup>#</sup> ..... 817-481-1421 <i>Insurance</i> jdortch@farmersagent.com	<b>MILNER, Walt</b> (29) PDG <sup>##</sup> ..... 817-283-6450 <i>Banker</i> WMilner744@aol.com	<b>TELLIN, Mary Jo</b> ..... 817-807-3962 <i>Chamber of Commerce</i> MaryJo@GrapevineChamber.org
<b>ECKMANN, Pamela</b> ..... 817-251-5962 <i>Chiropractor</i> DrPamEck@yahoo.com	<b>MITCHELL, Kevin</b> <sup>T</sup> ..... 817-253-9327 <i>Parks Director</i> KMitchell@grapevintexas.gov	<b>THOMAS, Jake</b> ..... 972-891-2504 <i>Auto Dent Removal</i> Jake@Dentless.net
<b>FANTZ, Debra</b> ..... 817-310-3064 <i>Independent Sales Dir.</i> debfantz@aol.com	<b>MOLLET, John</b> <sup>#</sup> ..... 817-481-2559 <i>Pastor</i> JohnM@FUMCG.org	<b>TORRES-LEPP, Amy</b> ..... 214-803-2765 <i>Title Insurance</i> Amy@alamotitletexas.com
<b>FICKES, Gary</b> <sup>#T</sup> ..... 817-581-3600 <i>County Government</i> gfickes650@aol.com	<b>NAVARRO, Richard</b> ..... 888-505-2803 <i>Consultant</i> Creativemind.nav@gmail.com	<b>VAN DYKE, Bob</b> (22) <sup>##</sup> ..... 817-576-2323 <i>Charter Financial Consultant</i> Robert.VanDyke@Prudential.com
<b>FINDLAY, Debra</b> ..... 626-201-8105 <i>CPA</i> debrafindlay@sbcglobal.net	<b>NEAL, Nathaniel</b> (H) ..... 817-329-9911 <i>Printing</i> neal@njgdinc.com	<b>WALSH, Bill</b> (9) <sup>#</sup> ..... 817-421-0197 <i>Personnel Mgt.</i> billwalshxt@verizon.net
<b>FOLIARD, Edward</b> ..... 708-305-4721 <i>Retired Fire Chief</i> EdwardFolliard@gmail.com	<b>NEALY, Tina</b> <sup>#</sup> ..... 817-329-1668 <i>Events Planning</i> weddings@paradisecovetx.com	<b>WEBSTER, Terry</b> (E) <sup>#</sup> ..... 214-706-8080 <i>Banker</i> terry.webster@bbvacomp.com
<b>FRANCISCO, Bill</b> ..... 817-946-7785 <i>Sales Management</i> bfrancisco@att.net	<b>NICHOLS, Morgan</b> ..... 805-368-3001 <i>Financial Advisor</i> morgan.nichols@ampf.com	<b>WESTFALL, Rick</b> ..... 817-925-9063 <i>Education Administration</i> Rick.Westfall@GCISD.net
<b>FRANK, Wayne Paul</b> (6) <sup>##</sup> ..... 817-949-2161 <i>Attorney</i> wpfatty@aol.com	<b>NIX, David</b> (H) ..... 817-975-7720 <i>CPA</i> redz28@att.net	<b>WHITE, MATTHEW</b> (H) ..... 254-368-6725 <i>School Administration</i> Matthew.White@gcisd.net
<b>FRANKS, Jon Michael</b> <sup>#</sup> ..... 817-329-5573 <i>Attorney</i> jonmfranks5@gmail.com	<b>NORTON, Bill</b> ..... 817-498-9159 <i>Technical Analyst</i> wnorton7@hotmail.com	<b>WHITLEY, Rob</b> <sup>#</sup> ..... 817-296-1659 <i>Commercial Cleaning</i> rwhitleyent@aol.com
<b>FREE, Elaine</b> (27) <sup>##</sup> ..... 214-534-1760 <i>Ed. Foundation Consulting</i> Elainefree1@charter.net	<b>O'DANIEL, Bill</b> ..... 817-310-3555 <i>Banker</i> bodaniel@bnkwest.com	<b>WILBANKS, Paula</b> (H) ..... 817-223-4105 <i>Retired Teacher</i> gigipw@aol.com
<b>FREED, Darlene</b> <sup>#</sup> ..... 817-480-6434 <i>Real Estate</i> Jfreed1@hotmail.com	<b>O'DELL, Duff</b> (9) <sup>##T</sup> ..... 214-478-3750 <i>Sales/Marketing</i> pdodell@verizon.net	<b>WOODS, Maybelle</b> <sup>#</sup> (H) ..... 817-481-3846 <i>Retired</i>
<b>GILLETTE, Edie</b> (E) <sup>##</sup> ..... 817-481-5050 <i>Public Relations</i> edie_gw@verizon.net	<b>PATTERSON, Allison</b> (1) <sup>##</sup> ..... 817-896-1560 <i>Health Management</i> Allison@cover-tek.com	
<b>GOBEN, Allen</b> ..... 817-515-6670 <i>College Admin.</i> Allen.Goben@ttcd.edu	<b>PINEIDER, Paul</b> (14) <sup>##</sup> ..... 817-410-3700 <i>CPA</i> p.pineider@pfacpa.com	
<b>GRAVES, Allan</b> <sup>#</sup> ..... 817-552-7742 <i>Attorney</i> ag@all-lawfirm.com	<b>QUALLS, Laura</b> ..... 972-814-0960 <i>Travel Agent</i> lqualls@dreamvacations.com	
<b>GRAVES, Angela</b> ..... 817-553-2500 <i>Banking</i> Angela.Graves@go2fbt.com	<b>RAMSEY, Jan</b> (1) <sup>#</sup> ..... 817-371-1393 <i>Real Estate</i> janramsey@remax.net	
<b>GRAY, John</b> (6) <sup>##</sup> ..... 817-701-6349 <i>Petroleum Refining</i> jhghshelton@gmail.com		

\* Indicates a new Red Badge member (123)