



# Grapevine Rotary Club

Grapevine, Texas • Chartered 1967  
District #5790 • Club #1793  
[www.grapevinerotary.com](http://www.grapevinerotary.com)

July 20, 2016

Meeting Time:  
Wednesday Noon  
Lancaster Theater  
308 South Main

## Coming Events

07/20 Rotary Foundation Meeting  
6:00 p.m. Main Street Bakery

08/11 Rotary Board Meeting  
4:00 p.m.  
Grapevine Chamber

Log on to our Website:  
[www.GrapevineRotary.com](http://www.GrapevineRotary.com)

Like us on Facebook at:  
<http://www.facebook.com/pages/Grapevine-Rotary>

### Special Thanks to

Rotary Bulletin Sponsor  
Nathanial Neal, Jake Garcia & Oscar Romero  
**NJ Graphic Design Inc.**  
203 E. Worth St., Grapevine, TX 76051  
(817)329-9911

For bulletin updates, contact RaDonna Hessel:  
[RaDonna@GrapevineChamber.org](mailto:RaDonna@GrapevineChamber.org)

## PROGRAM - Cybersecurity

### **Brian Nichols**



Brian Nichols is a Manager in PricewaterhouseCooper's Cybersecurity and Privacy Consulting practice. Brian completed his Masters in Accounting and Information Systems from Virginia Tech in 2009. He has been in the Cybersecurity field for 7 years, starting his career in Washington D.C.. His specialties include data privacy, cybersecurity strategy and governance, risk assessments, and security controls assessments.

Brian has led the implementation of data protection solutions for a Fortune 50 retailer. He has assisted with data breach investigations involving credit card theft. He has worked with Chief Information Security Officers to develop their organization's Cybersecurity strategies and roadmaps. Multiple times a year, Brian leads a Cybersecurity conference throughout the U.S. for Fortune 100 organizations to share Cybersecurity threat intelligence and best practices.

## Upcoming Program

**July 27, 2016**  
*Sterling Hilliard - All Things Millennial*

**August 3, 2016**  
*Juneria Berges - Club Assembly*

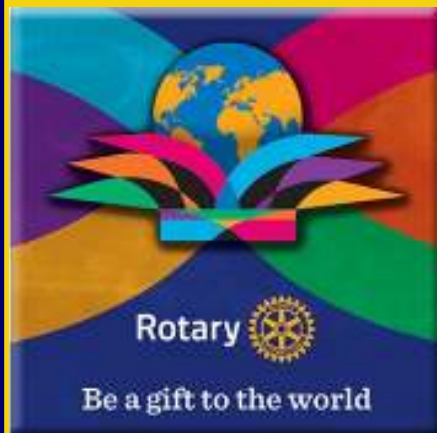
**August 10, 2016**  
*Darlene Freed - Camp RYLA*

**August 17, 2016**  
*Brent Hoodenpyle - Internet Marketing-Demystified*

## Rotary Four-Way Test

Of the things we think, say or do:

1. Is it the **TRUTH**?
2. Is it **FAIR** to all concerned?
3. Will it build **GOODWILL** and **BETTER FRIENDSHIPS**?
4. Will it be **BENEFICIAL** to all concerned?





# Leadership

## Club Officers 2016-2017

**Juneria Berges**  
*President*

**Eddie Salame**  
*Vice President & President Elect*

**Janice Kane**  
*Vice President & President Elect  
Nominee*

**LeAnn Brown**  
*Immediate Past President*

**Janice Kane**  
*Secretary*

**Kirby Kercheval**  
*Treasurer*

**Wayne Paul Frank**  
*Sergeants at Arms*

**Allen Barraclough**  
*Strategic Planning*

...

## Club Directors

### 2016-2017

**Rick Westfall - Vocational**  
**Lou Hillman - International**  
**Allison Patterson - Club Service**  
**Mary Jo Tellin - Community**  
**Darlene Freed - Youth in Service**

### 2017-2018

**Robyn Scott - Vocational**  
**Morgan Nichols - International**  
**Jared Richardson - Club Service**  
**Kevin McNamara - Community**  
**Brandon Corse - Youth in Service**

### Permanent

**Conrad Heede, PDG**  
**Walt Milner, PDG**  
**Tim Smith, PDG**

### Special Thanks to our Caterers:

Casey Owens, Owner



413 E. Northwest Highway, Grapevine, TX 76051  
(817) 481-3212

## Grapevine News & Notes

Rotary District 5790 Foundation-Membership Seminar

**Saturday, August 27, 20-2016**

Northside Baptist Church  
910 North Main Street  
Weatherford, TX

**8:30 AM- 2:00 PM**

Cost: \$20 per person - Includes continental breakfast and lunch.



The Foundation-Membership seminar has something for everyone.

The goal is for every club to come and bring their foundation and membership teams to learn together!

Feature Speakers  
Project Displays

Engaging and Informative Break out Sessions  
Announcement of 2016 Grant Awards  
Live Music at Lunch  
.....and much more!!!

Contact Juneria Berges for registration and other information.

## Notes from the President....

Welcome Ken Davis into the Grapevine Rotary Club! Ken Davis was inducted into the club with his sponsor, Alex Beloff, III standing by his side.



Thanks the GRC's Membership Team for their dedication, hard work, and dedication: President Elect Eddie Salame, PDG Walt Milner, Past President Allen Barraclough, and PDG Tim Smith. The Team extends their gratitude to all of you for inviting and mentoring prospective members who are dedicated to Service Above Self!

We want extend our gratitude to Helen Jean Lucas Reed and Teri Rhodes who so graciously extended the Family of Rotary's caring, love, and support which represents each member of our Grapevine Rotary Club Family!

Prayers of comfort, peace and support to RaDonna Hessel and her family due to the passing of her father and Margie Salame and her family for the loss of her mother. We, too, pray and affirm safety, peace and understanding to those and their families who provide protection services each day: the Police Dept., Fire Dept. and Military.

## Leadership Moment

“It is not the length of life, but the depth of life.”

*Ralph Waldo Emerson*

## Birthdays

Please join us in celebrating the Birthdays of the following members this month:

July, 2016

7	Lou Hillman
25	Helen Jean Lucas Reed
26	Tom Miller
26	Shonda Schaefer
26	Kirk Schultz
28	Walt Milner
29	Duff O'Dell



## Anniversaries

Please join us in celebrating the anniversaries of the following members this month:

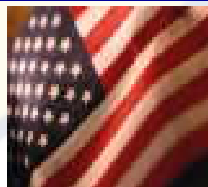
July, 2016

3	Marci Junge (Ron)
3	Janice Kane (John)
7	Laura Qualls (Kelly)
13	John Gray (Charna)
17	Paul Robinson (Melanie)
24	RaDonna Hessel (Marvin)
25	Jesse Rodriguez (Joanne)
27	Chris & Traci Coy



## Flag Days

Meet at 6:45 AM at the Depot to put out flags.  
Meet at 5:45 PM at the Depot to pick up flags.



<b>Independence Day</b>	July 4, 2016
<b>Labor Day</b>	September 5, 2016
<b>Remembering 9-11</b>	September 11, 2016
* At Memorial Site (Texan Trail & Hwy 26)	
<b>Columbus Day</b>	October 10, 2016
<b>Veteran's Day</b>	November 11, 2016
<b>Martin Luther King Day</b>	January 16, 2017
<b>President's Day</b>	February 20, 2017
<b>Peace Officers Memorial Day</b>	May 15, 2017
<b>Memorial Day</b>	May 29, 2017
<b>Flag Day</b>	June 14, 2017

## Grapevine Rotary Club 2016-2017 Committee And Chairmanships

### CLUB SERVICE

**Directors: Allison Patterson, Jared Richardson**

Programs:	Elaine Free
Public Relations/Social Media:	Deb Hinton
Newsletter/Directory:	Allison Patterson
Internet Support/Website:	Allison Patterson
Holiday Party:	RaDonna Hessel
Historical Committee:	Lou Hillman
New Members:	Eddie Salame
Fireside Chat:	Walt Milner
Membership and Retention:	Walt Milner

Freshman Committee:	Allen Barraclough
Scholarship Fund Raising:	RaDonna Hessel
Fun Committee:	LeAnn Brown
	Robyn Scott

Family of Rotary:	Helen Jean Lucas Reed
	Teri Rhodes

Strategic Planning:	Allen Barraclough
Strategic Initiatives Committees:	
Marketing GRC	Marci Junge
Engaging Millennials	Allen Barraclough

### COMMUNITY SERVICE

**Directors: Mary Jo Tellin, Kevin McNamara**

Festivals:	Bill Walsh
Main Street Flags:	Robin Ryan,
	Bruce Stacy, Bret Berglund,
	LeAnn Brown, Ralph Mattison

Special Olympics:	Jill Bass, Robyn Scott
Student Computer Awards:	Bill Walsh
Health & Blood:	Tena Neely,
	Gary Fickes, Darlene Freed

	Roger Ackley
Middle School Adoption:	Rick Westfall
	Mary Jo Tellin

Strategic Initiatives Committees:	
More Community Service in Grapevine	Janice Kane

### VOCATIONAL SERVICE

**Directors: Rick Westfall, Robyn Scott**

Vocational Service Awards:	RaDonna Hessel
Ken Diehm Community Service Award:	

	Melburn Sibley
Spirit Awards:	Debi Meek
RITE:	Eddie Salame

### YOUTH IN SERVICE

**Directors: Darlene Freed, Brandon Corse**

4-Way Speech Contest:	Jennifer Brecht
	Carol Record
Scholarship Awards:	Jeff Taber
GHS & CHHS Interact	Darlene Freed
	Juneria Berges
RYLA:	Darlene Freed
Rotary Youth Exchange:	Janice Kane

### INTERNATIONAL SERVICE

**Directors: Lou Hillman, Morgan Nichols**

Rotary Foundation:	Conrad Heede
Global Grants:	Conrad Heede
Wine Fellowship:	Marci Junge
	Conrad Heede

## Rotary International Officers

**K.R. "Ravi" Ravindran**

Rotary Club of Colombo, Western Province, Sri Lanka

**Rotary International President**

**Troy Secord**

The Rotary Club of Wichita Falls North  
**Governor District 5790**

**Marci Junge**

The Rotary Club of Grapevine  
**Assistant Governor**

**Conrad Heede**

**Walt Milner**

**Tim Smith**

## Nearby Clubs for Make-Up Meetings

### Arlington

Thursdays at Noon at First United Methodist Church (313 N. Center)

### Arlington North

Mondays at 11:50 AM at Olenjack's Grille (770 Road to Six Flags East, Suite 100)

### Arlington Sunrise

Fridays at 6:45 a.m. Rolling Hills Country Club, 401 East Lamar Blvd.

### Arlington Sunset

Tuesdays at 6:00 PM at J Gilligan's (407 East South Street, Arlington)

### Arlington West

Tuesdays at Noon at Shady Valley Golf Club (4001 West Park Row, Arlington)

### Colleyville

Tuesday at Noon at Ruggeri's Italian Ristorante, (32 Village Lane)

### Eagle Mountain - Saginaw

Wednesdays 7:00 AM at Hollenstein Career and Technology Center • 5501 Marine Creek Parkway, Fort Worth, TX 76179

### Flower Mound

Thursdays at Noon at Salerno's Restaurant (3407 Long Prairie Rd., F.M)

### Fort Worth East

Mondays at Noon at Meadowbrook Methodist (3900 Meadowbrook)

### Fort Worth North

Wednesdays at Noon at Joe T. Garcia's ( 2201 North Commerce, Fort Worth)

### HEB

Tuesdays, at Noon at 1st Baptist Church of Hurst (Norwood, south of Harwood)

### Irving-Las Colinas Rotary

Thursdays at Noon at Las Colinas Country Club

### Keller

Tuesday, Noon, Sky Creek Ranch Golf Club

### Lewisville

Wednesdays at Noon at Grotto Restaurant

### Lewisville Morning

Thursdays at 7:00 AM at the CCA Community Room, 200 S. Mill St.

### Metroport

Fridays at 7:00 AM at the Marriott-Solana

### Mid-Cities Pacesetters Rotary Club

Fridays, 7 AM (Texas Star Golf Course)

### Southlake

Friday at Noon at Timarron Country Club  
1400 Byron Nelson Parkway



# Grapevine Rotary Club Membership Roster

<b>ACKLEY, Roger</b> (1) <sup>#</sup> ..... 612-839-3866 <i>Retired</i> rogackley@msn.com	<b>GRIBBLE, Rocky</b> (14) <sup>#T</sup> ..... 817-481-8733 <i>Musical Entertainment</i> rockyg3495@aol.com	<b>RECORD, Carol Ann</b> (19) <sup>##</sup> ..... 817-488-1008 <i>Pastor</i> revcarol@flash.net
<b>ANALOVITCH, Jay</b> <sup>#</sup> ..... 623-236-0724 <i>Hospice</i> Holdings48@hotmail.com	<b>GUM, Rhett</b> ..... 817-602-1494 <i>Congressional Outreach</i> Rhett.gum@mail.house.gov	<b>REED, Helen Jean Lucas Reed</b> <sup>#</sup> ..... 817-329-4776 <i>Public Relations</i> hlreed4@msn.com
<b>ANTINONE, Patrick</b> ..... 817-919-4122 <i>Education Admin.</i> Patrick.Antinone@gcisd.net	<b>HAWKINS, Shawn</b> ..... 817-821-8966 <i>Computer Consulting</i> Shawn@bdunn.com	<b>RICHARDSON, Jared</b> ..... 214695-2733 <i>Sales Manager</i> jbrichardson@sewell.com
<b>BAKALO, Yuliya</b> ..... 817-908-3717 <i>Realtor</i> yuliyadfw@gmail.com	<b>HEEDE, Conrad</b> (40) PDG <sup>##</sup> ..... 817-235-8110 <i>Real Estate Mgt.</i> ccheede@aol.com	<b>RHODES, Teri</b> (2) <sup>#</sup> ..... 817-797-5465 <i>Realtor</i> TeriRhodes@msn.com
<b>BALVIN, Marvin</b> (2) <sup>##T</sup> ..... 817-328-1144 <i>Realtor</i> marvinbalvin@kw.com	<b>HESEL, RaDonna</b> (14) <sup>##T</sup> ..... 817 481-1522 <i>Chamber of Commerce CEO</i> RaDonna@GrapevineChamber.org	<b>ROBINSON, Paul</b> <sup>#</sup> ..... 682-234-4992 <i>Orthodontist</i> paulrobinson_dmd@yahoo.com
<b>BARKER, Alicia</b> ..... 817-673-1561 <i>Office Furniture Sales</i> ahbbtb@verizon.net	<b>HILLMAN, Lou</b> (30) <sup>##T+</sup> ..... 817-481-2573 <i>Real Estate</i> Lou@BHHSLLH.com	<b>RODRIGUEZ, Jesse</b> ..... 817-707-7600 <i>Self-Employed</i> cmredu@gmail.com
<b>BARRACLOUGH, Allen</b> (14) <sup>##</sup> ..... 817-300-9327 <i>Training - Org. Dev.</i> abear727@aol.com	<b>HINTON, Deb</b> ..... 817-657-4772 <i>Retired</i> mardebev@verizon.net	<b>RODRIGUEZ, Nadine</b> (H) ..... 817-410-3583 <i>Events Crd.</i> nrodriguez@grapevintexasusa.gov
<b>BASS, Jill</b> <sup>#</sup> ..... 469-814-2547 <i>Administrator/PT</i> Jill.bass@baylorhealth.edu	<b>HORAK, Curtis</b> ..... 972-302-1907 <i>Sign Co. Owner</i> curt@prioritysignsandgraphics.com	<b>ROSS, Christian</b> ..... 817-601-5019 <i>Product Developer</i> hello@eightyninety.com
<b>BELOFF III, Alex</b> (46) <sup>#</sup> + ..... 817-556-1233 <i>Sales/Training</i> alexbeloff@verizon.net	<b>HUFFMAN, Darrell</b> <sup>#T</sup> ..... 817-366-5271 <i>Deputy Constable</i> dwh5122@msn.com	<b>RUMBELOW, Bruno</b> (1) <sup>#T</sup> ..... 817-410-3104 <i>Municipal Admin.</i> brumbelow@grapevintexas.gov
<b>BERGES, Jeneria</b> <sup>#</sup> ..... 972-304-4368 <i>Non-Profit E.D.</i> jbeddr@gmail.com	<b>HUMBLE, Gary</b> <sup>#</sup> ..... 817-798-8091 <i>Entrepreneur</i> me@garyhumble.com	<b>RYAN, Robin</b> (4) <sup>#T</sup> ..... 817-251-5501 <i>Superintendent</i> Robin.Ryan@GCISD.net
<b>BERGLUND, Bret</b> (2) <sup>#T</sup> ..... 817-455-1241 <i>Service Manager</i> babgsxr@gmail.com	<b>HUTTON, Traci D.</b> (5) <sup>#</sup> ..... 817-442-9352 <i>Attorney</i> Traci@TraciHutton.com	<b>SALAME, Eddie</b> (3) <sup>#</sup> ..... 817-410-3225 <i>Police Administration</i> esalame@grapevintexas.gov
<b>BOHSALI-GOURY, Yasmine</b> (H) <sup>#</sup> ..... 817-247-9895 <i>Restaurateur</i> yasmine316@hotmail.com	<b>JANICEK, Steve</b> <sup>#</sup> ..... 682-888-6506 <i>Corporate Transportation</i> swjanicek@aol.com	<b>SALAME, Margie</b> ..... 817-366-5499 <i>Realtor</i> margiesalame@gmail.com
<b>BRATTON, Sheri</b> ..... 817-908-9767 <i>Marketing / Admin</i> Srf0001@hotmail.com	<b>JAY, Randy</b> ..... 817-798-6246 <i>Bank Lending</i> randy.jay@go2fibt.com	<b>SAYERS, Merlyn</b> <sup>#</sup> ..... 817-412-5101 <i>Blood Bank Mgt.</i> msayers@carterbloodcare.org
<b>BRECHT, Jennifer</b> <sup>#</sup> ..... 817-296-8675 <i>Insurance</i> jbrecht@brechtassoc.com	<b>JOHNSTON, Don</b> <sup>#</sup> ..... 682-325-5202 <i>Banking</i> djohnston@nstarbank.com	<b>SCHAEFER, Shonda</b> <sup>#</sup> ..... 817-657-1017 <i>Non-Profit Mgt.</i> sschaefer@gracegrapevine.org
<b>BROWN, Darrell</b> ..... 817-564-3443 <i>Firefighter</i> DBrown@GrapevineTexas.gov	<b>JONES, Dick</b> (E) <sup>#</sup> ..... 817-421-4617 <i>Pest Control Owner</i> Djpp57@verizon.net	<b>SCHRIEVER, Stacy</b> <sup>#T</sup> ..... 817-707-5454 <i>Mortgage Banker</i> stacylynnshriever@gmail.com
<b>BROWN, Kelly</b> <sup>#</sup> ..... 817-481-7025 <i>Chiropractor</i> brownchiropracticca@gmail.com	<b>JUNGE, Marci</b> (26) <sup>##</sup> ..... 817-366-6138 <i>Interior Designer</i> mjunge@aol.com	<b>SCHULTZ, Kirk</b> ..... 515-250-9166 <i>Trainer</i> kirkschultz@gmail.com
<b>BROWN, LeAnn</b> (2) <sup>#</sup> ..... 817-313-3107 <i>Real Estate</i> labrown@silveroakcre.com	<b>KANE, Janice</b> <sup>#</sup> (5) ..... 817-251-5480 <i>Foundation E.D.</i> Janice.kane@gcisd.net	<b>SCOTT, Robyn</b> <sup>T</sup> <sup>#</sup> ..... 817-488-2733 <i>Financial Advisor</i> Robyn.scott@edwardjones.com
<b>BROWN, Michael</b> (1) <sup>#</sup> ..... 817-874-7817 <i>Financial Advisor</i> Michael.Brown@edwardjones.com	<b>KELLY, Mark Lucas</b> <sup>#</sup> (1) ..... 817-313-8288 <i>Funeral Home</i> mkelly@familyowned.net	<b>SHERMAN, Judy</b> (9) <sup>#+</sup> ..... 817-366-1119 <i>Financial Advisor</i> judysherman_2000@yahoo.com
<b>BUFFINGTON, Bill</b> <sup>#</sup> ..... 214-2058-7408 <i>Video Productions</i> auditvisuals@gmail.com	<b>KERCHEVAL, Kirby</b> ..... 817-328-1924 <i>Commercial Lending</i> KirbyKercheval@gmail.com	<b>SIBLEY, Melburn</b> (E) <sup>##</sup> ..... 817-329-0821 <i>Pastor</i> jmelburn@aol.com
<b>BURRUS, Bob</b> (E) <sup>#</sup> ..... 817-223-5406 <i>Retired</i> bobburrus7@gmail.com	<b>LEASE, Carolyn</b> <sup>#</sup> ..... 817-501-8596 <i>Sales</i> Carolyn@cavnarsmith.com	<b>SIGLER, JR., E.A.</b> (E) <sup>#</sup> ..... 817-267-6426 <i>School Administrator</i> esigler1@att.net
<b>CARNES, Matt</b> <sup>#</sup> ..... 817-722-8811 <i>Marketing</i> matt.carnes@verizon.net	<b>LUERS, Dennis</b> <sup>##</sup> ..... 817-832-5886 <i>Real Estate</i> Dennisluers@verizon.net	<b>SLECHTA, Paul</b> <sup>T</sup> ..... 817-488-4151 <i>Embroidery/Owner</i> paul@pandasportswear.com
<b>COPPAGE, Paul</b> (11) <sup>#T</sup> ..... 214-226-0013 <i>Real Estate</i> paulcoppage@yahoo.com	<b>LUERS, Jan Smith</b> (2) <sup>#</sup> ..... 214-202-8700 <i>Event Planning</i> rbsjss@verizon.net	<b>SMITH, Peggy</b> <sup>#</sup> (H) ..... 817-424-1699 <i>Retired</i>
<b>CORSE, Brandon</b> <sup>+</sup> ..... 817-608-6868 <i>Financial Advisor</i> brandon.corse@edwardjones.com	<b>MANGRUM, Michael</b> ..... 469-989-7371 <i>Financial Advisor</i> mmangrum@wradvisors.com	<b>SMITH, Tim</b> PDG (2) <sup>##</sup> ..... 405-207-1019 <i>HR: Training &amp; Dev.</i> tansonsmith@gmail.com
<b>COY, Chris</b> (8) <sup>#</sup> ..... 817-689-9899 <i>Corporate Finance</i> chriscoydfw@gmail.com	<b>MATTISON, Ralph</b> <sup>#</sup> ..... 972-897-0117 <i>Winery Owner</i> MattisonR@hotmail.com	<b>STACY, Bruce</b> (2) <sup>#</sup> ..... 337-296-5475 <i>Retired</i> Abs.cfs@verizon.net
<b>COY, Traci</b> ..... 817-729-0963 <i>CPA</i> traci@tracicoypca.com	<b>MCNAMARA, Kevin</b> ..... 972-921-5835 <i>Restaurant Owner</i> Kevin@WiseGuysTX.com	<b>STEWART, Roy</b> (E) <sup>##</sup> ..... 817-481-5824 <i>Real Estate Dev.</i> roy_stewart@peoplepc.com
<b>DAVIS, Ken</b> ..... 817-846-7897 <i>Automotive Sales</i> Ken.Davis@Grubbs.com	<b>MEEK, Debi</b> <sup>#</sup> ..... 817-800-0804 <i>Retail Mgt.</i> debimeek@hotmail.com	<b>TABER, Jeff</b> (2) <sup>#</sup> ..... 405-203-5250 <i>Business Consultant</i> jefftaber@hotmail.com
<b>DODSON, Lee</b> <sup>#</sup> ..... 817-481-1036 <i>Dentist</i> lcdds@aol.com	<b>MILLER, Tom</b> ..... 817-706-8733 <i>Owner</i> tom@theliftoffice.com	<b>TATE, William "Bill"</b> <sup>#T</sup> ..... 817-488-8668 <i>Attorney</i> wdteate@verizon.net
<b>DORTCH, Jack</b> (38) <sup>#</sup> ..... 817-481-1421 <i>Insurance</i> jdortch@farmersagent.com	<b>MILNER, Walt</b> (29) PDG <sup>##</sup> ..... 817-283-6450 <i>Banker</i> WMilner744@aol.com	<b>TELLIN, Mary Jo</b> ..... 817-807-3962 <i>Chamber of Commerce</i> MaryJo@GrapevineChamber.org
<b>ECKMANN, Pamela</b> ..... 817-251-5962 <i>Chiropractor</i> DrPamEck@yahoo.com	<b>MITCHELL, Kevin</b> <sup>T</sup> ..... 817-253-9327 <i>Parks Director</i> KMitchell@grapevintexas.gov	<b>THOMAS, Jake</b> ..... 972-891-2504 <i>Auto Dent Removal</i> Jake@Dentless.net
<b>FANTZ, Debra</b> ..... 817-310-3064 <i>Independent Sales Dir.</i> debfantz@aol.com	<b>MOLLET, John</b> <sup>#</sup> ..... 817-481-2559 <i>Pastor</i> JohnM@FUMCG.org	<b>TORRES-LEPP, Amy</b> ..... 214-803-2765 <i>Title Insurance</i> Amy@alamotitletexas.com
<b>FICKES, Gary</b> <sup>#T</sup> ..... 817-581-3600 <i>County Government</i> gfickes650@aol.com	<b>NAVARRO, Richard</b> ..... 888-505-2803 <i>Consultant</i> Creativemind.nav@gmail.com	<b>VAN DYKE, Bob</b> (22) <sup>##</sup> ..... 817-576-2323 <i>Charter Financial Consultant</i> Robert.VanDyke@Prudential.com
<b>FINDLAY, Debra</b> ..... 626-201-8105 <i>CPA</i> debrafindlay@sbcglobal.net	<b>NEAL, Nathaniel</b> (H) ..... 817-329-9911 <i>Printing</i> neal@njgdinc.com	<b>WALSH, Bill</b> (9) <sup>#</sup> ..... 817-421-0197 <i>Personnel Mgt.</i> billwalshxt@verizon.net
<b>FOLIARD, Edward</b> ..... 708-305-4721 <i>Retired Fire Chief</i> EdwardFolliard@gmail.com	<b>NEALY, Tina</b> <sup>#</sup> ..... 817-329-1668 <i>Events Planning</i> weddings@paradisecovetx.com	<b>WEBSTER, Terry</b> (E) <sup>#</sup> ..... 214-706-8080 <i>Banker</i> terry.webster@bbvacompass.com
<b>FRANCISCO, Bill</b> ..... 817-946-7785 <i>Sales Management</i> bfrancisco@att.net	<b>NICHOLS, Morgan</b> ..... 805-368-3001 <i>Financial Advisor</i> morgan.nichols@ampf.com	<b>WESTFALL, Rick</b> ..... 817-925-9063 <i>Education Administration</i> Rick.Westfall@GCISD.net
<b>FRANK, Wayne Paul</b> (6) <sup>##</sup> ..... 817-949-2161 <i>Attorney</i> wpfatty@aol.com	<b>NIX, David</b> (H) ..... 817-975-7720 <i>CPA</i> redz28@att.net	<b>WHITE, MATTHEW</b> (H) ..... 254-368-6725 <i>School Administration</i> Matthew.White@gcisd.net
<b>FRANKS, Jon Michael</b> <sup>#</sup> ..... 817-329-5573 <i>Attorney</i> jonmfranks5@gmail.com	<b>NORTON, Bill</b> ..... 817-498-9159 <i>Technical Analyst</i> wnorton7@hotmail.com	<b>WHITLEY, Rob</b> <sup>#</sup> ..... 817-296-1659 <i>Commercial Cleaning</i> rwhitleyent@aol.com
<b>FREE, Elaine</b> (27) <sup>##</sup> ..... 214-534-1760 <i>Ed. Foundation Consulting</i> Elainefree1@charter.net	<b>O'DANIEL, Bill</b> ..... 817-310-3555 <i>Banker</i> bodaniel@bnkwest.com	<b>WILBANKS, Paula</b> (H) ..... 817-223-4105 <i>Retired Teacher</i> gigipw@aol.com
<b>FREED, Darlene</b> <sup>#</sup> ..... 817-480-6434 <i>Real Estate</i> Jfreed1@hotmail.com	<b>O'DELL, Duff</b> (9) <sup>##T</sup> ..... 214-478-3750 <i>Sales/Marketing</i> pdodell@verizon.net	<b>WOODS, Maybelle</b> <sup>#</sup> (H) ..... 817-481-3846 <i>Retired</i>
<b>GILLETTE, Edie</b> (E) <sup>##</sup> ..... 817-481-5050 <i>Public Relations</i> edie_gw@verizon.net	<b>PATTERSON, Allison</b> (1) <sup>##</sup> ..... 817-896-1560 <i>Health Management</i> Allison@cover-tek.com	
<b>GOBEN, Allen</b> ..... 817-515-6670 <i>College Admin.</i> Allen.Goben@ttcd.edu	<b>PINEIDER, Paul</b> (14) <sup>##</sup> ..... 817-410-3700 <i>CPA</i> p.pineider@pfacpa.com	
<b>GRAVES, Allan</b> <sup>#</sup> ..... 817-552-7742 <i>Attorney</i> ag@all-lawfirm.com	<b>QUALLS, Laura</b> ..... 972-814-0960 <i>Travel Agent</i> lqualls@dreamvacations.com	
<b>GRAVES, Angela</b> ..... 817-553-2500 <i>Banking</i> Angela.Graves@go2fibt.com	<b>RAMSEY, Jan</b> (1) <sup>#</sup> ..... 817-371-1393 <i>Real Estate</i> janramsey@remax.net	
<b>GRAY, John</b> (6) <sup>##</sup> ..... 817-701-6349 <i>Petroleum Refining</i> jhghshelton@gmail.com		

\* Indicates a new Red Badge member (123)