



# Grapevine Rotary Club

Grapevine, Texas • Chartered 1967  
District #5790 • Club #1793  
[www.grapevinerotary.com](http://www.grapevinerotary.com)

**July 6, 2016**

**Meeting Time:**  
Wednesday Noon  
Lancaster Theater  
308 South Main

## Coming Events

**07/14 Rotary Board Meeting**  
4:00 p.m.  
Grapevine Chamber

**07/20 Rotary Foundation Meeting**  
6:00 p.m. Main Street Bakery

Log on to our Website:  
[www.GrapevineRotary.com](http://www.GrapevineRotary.com)

Like us on Facebook at:  
[http://www.facebook.com/pages/  
Grapevine-Rotary](http://www.facebook.com/pages/Grapevine-Rotary)

### Special Thanks to

**Rotary Bulletin Sponsor**  
Nathanial Neal, Jake Garcia & Oscar Romero  
**NJ Graphic Design Inc.**  
203 E. Worth St., Grapevine, TX 76051  
(817)329-9911

For bulletin updates, contact RaDonna Hessel:  
[RaDonna@GrapevineChamber.org](mailto:RaDonna@GrapevineChamber.org)

## **PROGRAM - World War II Service**

### ***Donald Graves***

Donald Graves was born in Detroit, Michigan in 1925. He entered the United States Marine Corp at the age of 17 on August 17, 1942.



Donald served two tours in the South Pacific. His 5th Marine division n served with the occupation of Japan. On February 19, 1945, his division hit the beach on Iwo Jima and secured Mt. Surabachi in three days, thus, the famous flag raising on Mt. Surabachi. In the next five weeks of heavy fighting, the island was secured. He was discharged on January 12, 1946.

Since then, Donald has been a singer and performer in Detroit Michigan and Hollywood California. After a few years, he was called to Christian ministry as a pastor and singer. Donald has had many opportunities as a guest speaker to talk about his experiences in WWII. He also has worked for the federal prison, system, and Gospel Rescue Missions. He has a wife, Rebecca, of 68 years and has four adult children, six grandchildren, and ten great grandchildren with the twelfth due in April.

Donald loves his country and some of the beautiful states he has lived in are Michigan, Wisconsin, South Dakota, Arizona, and now the great State of Texas!

## **Upcoming Program**

**July 13, 2016**

*Allan Saxe - The Presidential Campaign*

**July 20, 2016**

*Brian Nichols - Cybersecurity*

**July 27, 2016**

*Sterling Hilliard - All Things Millennial*

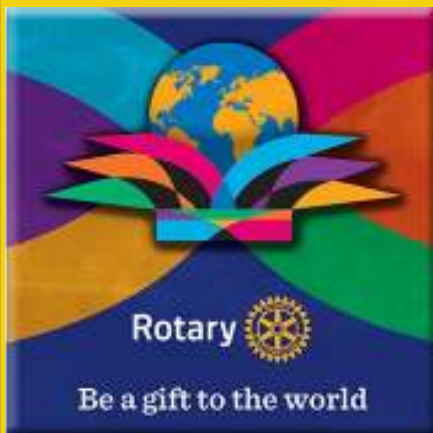
**August 3, 2016**

*Juneria Berges - Club Assembly*

## **Rotary Four-Way Test**

**Of the things we think, say or do:**

1. Is it the **TRUTH**?
2. Is it **FAIR** to all concerned?
3. Will it build **GOODWILL** and **BETTER FRIENDSHIPS**?
4. Will it be **BENEFICIAL** to all concerned?





# Leadership

## Club Officers 2016-2017

**Juneria Berges**  
*President*

**Eddie Salame**  
*Vice President & President Elect*

**Janice Kane**  
*Vice President & President Elect  
Nominee*

**LeAnn Brown**  
*Immediate Past President*

**Janice Kane**  
*Secretary*

**Kirby Kercheval**  
*Treasurer*

**Wayne Paul Frank**  
*Sergeants at Arms*

**Allen Barraclough**  
*Strategic Planning*

...

## Club Directors

### 2016-2017

**Rick Westfall** - Vocational  
**Lou Hillman** - International  
**Allison Patterson** - Club Service  
**Mary Jo Tellin** - Community  
**Darlene Freed** - Youth in Service

### 2017-2018

**Robyn Scott** - Vocational  
**Morgan Nichols** - International  
**Jared Richardson** - Club Service  
**Kevin McNamara** - Community  
**Brandon Corse** - Youth in Service

### Permanent

**Conrad Heede**, PDG  
**Walt Milner**, PDG  
**Tim Smith**, PDG

### Special Thanks to our Caterers:

Casey Owens, Owner



413 E. Northwest Highway, Grapevine, TX 76051  
(817) 481-3212

## Grapevine Rotary Awards

Besides installing the 2016 - 2017 Board and officers for the Grapevine Rotary Club, last week several club members were recognized for their efforts under now Immediate Past President LeAnn Brown. Those honored included:

Lunch Heros 'trophies' –  
**Lancaster Staff**  
**Bartley's BBQ**  
**NJ Graphics & Designs**  
**Alex Beloff**



President's Awards  
**Elaine Free**  
**Allen Barraclough**  
**RaDonna Hessel**  
**Wayne Paul Frank**



Rising Star Award - **Kevin McNamara**  
(New Rotarian that jumped in feet first!)

Quiet Rotarian Awards – (Just a few of those behind the scenes that do so much)

**Robyn Scott**  
**Paul Pineider**  
**Jack Dortch**



Service Above Self Award – **Bill Walsh**

Spirit of Rotary Award – **Mary Jo Tellin**

Rotarian of the Year – **Janice Kane**



## Leadership Moment

"Liberty lies in the hearts of men and women;

When it dies there, no constitution, no law, no court can save it.....

While it lies there, it needs no constitution, no law, no court to save it."

*Anonymous*

## Birthdays

Please join us in celebrating the Birthdays of the following members this month:

July, 2016

7	Lou Hillman
25	Helen Jean Lucas Reed
26	Tom Miller
26	Shonda Schaefer
26	Kirk Schultz
28	Walt Milner
29	Duff O'Dell



## Anniversaries

Please join us in celebrating the anniversaries of the following members this month:

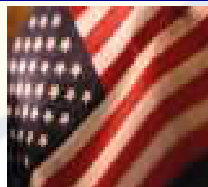
July, 2016

3	Marci Junge (Ron)
3	Janice Kane (John)
7	Laura Qualls (Kelly)
13	John Gray (Charna)
17	Paul Robinson (Melanie)
24	RaDonna Hessel (Marvin)
25	Jesse Rodriguez (Joanne)
27	Chris & Traci Coy



## Flag Days

Meet at 6:45 AM at the Depot to put out flags.  
Meet at 5:45 PM at the Depot to pick up flags.



<b>Independence Day</b>	July 4, 2016
<b>Labor Day</b>	September 5, 2016
<b>Remembering 9-11</b>	September 11, 2016
* At Memorial Site (Texan Trail & Hwy 26)	
<b>Columbus Day</b>	October 10, 2016
<b>Veteran's Day</b>	November 11, 2016
<b>Martin Luther King Day</b>	January 16, 2017
<b>President's Day</b>	February 20, 2017
<b>Peace Officers Memorial Day</b>	May 15, 2017
<b>Memorial Day</b>	May 29, 2017
<b>Flag Day</b>	June 14, 2017

## Grapevine Rotary Club 2016-2017 Committee And Chairmanships

### CLUB SERVICE

**Directors:** Allison Patterson, Jared Richardson

Programs: Elaine Free  
Public Relations/Social Media: Deb Hinton  
Allison Patterson  
Newsletter/Directory: RaDonna Hessel  
Internet Support/Website: Allison Patterson  
Holiday Party: RaDonna Hessel  
Historical Committee: Lou Hillman  
New Members: Eddie Salame  
Fireside Chat: Walt Milner  
Membership and Retention: Walt Milner  
Tim Smith

Freshman Committee: Allen Barraclough  
Scholarship Fund Raising: Alicia Barker  
Fun Committee: LeAnn Brown  
Robyn Scott

Family of Rotary: Helen Jean Lucas Reed  
Teri Rhodes  
Strategic Planning: Allen Barraclough  
Strategic Initiatives Committees:  
Marketing GRC: Marci Junge  
Engaging Millennials: Allen Barraclough

### COMMUNITY SERVICE

**Directors:** Mary Jo Tellin, Kevin McNamara

Festivals: Bill Walsh  
Main Street Flags: Robin Ryan,  
Bruce Stacy, Bret Berglund,  
LeAnn Brown, Ralph Mattison  
Special Olympics: Jill Bass, Robyn Scott  
Student Computer Awards: Bill Walsh  
Health & Blood: Tena Neely,  
Gary Fickes, Darlene Freed  
Roger Ackley  
Middle School Adoption: Rick Westfall  
Mary Jo Tellin

Strategic Initiatives Committees:  
More Community Service in Grapevine  
Janice Kane

### VOCATIONAL SERVICE

**Directors:** Rick Westfall, Robyn Scott

Vocational Service Awards: RaDonna Hessel  
Ken Diehm Community Service Award:

Melburn Sibley  
Spirit Awards: Debi Meek  
RITE: Eddie Salame

### YOUTH IN SERVICE

**Directors:** Darlene Freed, Brandon Corse

4-Way Speech Contest: Jennifer Brecht  
Carol Record  
Scholarship Awards: Jeff Taber  
GHS & CHHS Interact: Darlene Freed  
Juneria Berges  
RYLA: Darlene Freed  
Rotary Youth Exchange: Janice Kane

### INTERNATIONAL SERVICE

**Directors:** Lou Hillman, Morgan Nichols

Rotary Foundation: Conrad Heede  
Global Grants: Conrad Heede  
Wine Fellowship: Marci Junge  
Conrad Heede

## Rotary International Officers

**K.R. "Ravi" Ravindran**

Rotary Club of Colombo, Western Province, Sri Lanka

**Rotary International President**

**Troy Secord**

The Rotary Club of Wichita Falls North  
**Governor District 5790**

**Marci Junge**

The Rotary Club of Grapevine  
**Assistant Governor**

**Conrad Heede**

**Walt Milner**

**Tim Smith**

## Nearby Clubs for Make-Up Meetings

### Arlington

Thursdays at Noon at First United Methodist Church (313 N. Center)

### Arlington North

Mondays at 11:50 AM at Olenjack's Grille (770 Road to Six Flags East, Suite 100)

### Arlington Sunrise

Fridays at 6:45 a.m. Rolling Hills Country Club, 401 East Lamar Blvd.

### Arlington Sunset

Tuesdays at 6:00 PM at J Gilligan's (407 East South Street, Arlington)

### Arlington West

Tuesdays at Noon at Shady Valley Golf Club (4001 West Park Row, Arlington)

### Colleyville

Tuesday at Noon at Ruggeri's Italian Ristorante, (32 Village Lane)

### Eagle Mountain - Saginaw

Wednesdays 7:00 AM at Hollenstein Career and Technology Center • 5501 Marine Creek Parkway, Fort Worth, TX 76179

### Flower Mound

Thursdays at Noon at Salerno's Restaurant (3407 Long Prairie Rd., F.M)

### Fort Worth East

Mondays at Noon at Meadowbrook Methodist (3900 Meadowbrook)

### Fort Worth North

Wednesdays at Noon at Joe T. Garcia's ( 2201 North Commerce, Fort Worth)

### HEB

Tuesdays, at Noon at 1st Baptist Church of Hurst (Norwood, south of Harwood)

### Irving-Las Colinas Rotary

Thursdays at Noon at Las Colinas Country Club

### Keller

Tuesday, Noon, Sky Creek Ranch Golf Club

### Lewisville

Wednesdays at Noon at Grotto Restaurant

### Lewisville Morning

Thursdays at 7:00 AM at the CCA Community Room, 200 S. Mill St.

### Metroport

Fridays at 7:00 AM at the Marriott-Solana

### Mid-Cities Pacesetters Rotary Club

Fridays, 7 AM (Texas Star Golf Course)

### Southlake

Friday at Noon at Timarron Country Club  
1400 Byron Nelson Parkway

# Grapevine Rotary Club Membership Roster

<b>ACKLEY, Roger</b> (1) <sup>#</sup> ..... 612-839-3866 <i>Retired</i> rogackley@msn.com	<b>GRIBBLE, Rocky</b> (14) <sup>#T</sup> ..... 817-481-8733 <i>Musical Entertainment</i> rockyg3495@aol.com	<b>RECORD, Carol Ann</b> (19) <sup>##</sup> ..... 817-488-1008 <i>Pastor</i> revcarol@flash.net
<b>ANALOVITCH, Jay</b> <sup>#</sup> ..... 623-236-0724 <i>Hospice</i> Holdings48@hotmail.com	<b>GUM, Rhett</b> ..... 817-602-1494 <i>Congressional Outreach</i> Rhett.gum@mail.house.gov	<b>REED, Helen Jean Lucas Reed</b> <sup>#</sup> ..... 817-329-4776 <i>Public Relations</i> hlreed4@msn.com
<b>ANTINONE, Patrick</b> ..... 817-919-4122 <i>Education Admin.</i> Patrick.Antinone@gcisd.net	<b>HAWKINS, Shawn</b> ..... 817-821-8966 <i>Computer Consulting</i> Shawn@bdunn.com	<b>RICHARDSON, Jared</b> ..... 214695-2733 <i>Sales Manager</i> jbrichardson@sewell.com
<b>BAKALO, Yuliya</b> ..... 817-908-3717 <i>Realtor</i> yuliyadfw@gmail.com	<b>HEEDE, Conrad</b> (40) PDG <sup>##</sup> ..... 817-235-8110 <i>Real Estate Mgt.</i> ccheede@aol.com	<b>RHODES, Teri</b> (2) <sup>#</sup> ..... 817-797-5465 <i>Realtor</i> TeriRhodes@msn.com
<b>BALVIN, Marvin</b> (2) <sup>##T</sup> ..... 817-328-1144 <i>Realtor</i> marvinbalvin@kw.com	<b>HESEL, RaDonna</b> (14) <sup>##T</sup> ..... 817 481-1522 <i>Chamber of Commerce CEO</i> RaDonna@GrapevineChamber.org	<b>ROBINSON, Paul</b> <sup>#</sup> ..... 682-234-4992 <i>Orthodontist</i> paulrobinson_dmd@yahoo.com
<b>BARKER, Alicia</b> ..... 817-673-1561 <i>Office Furniture Sales</i> ahhbttb@verizon.net	<b>HILLMAN, Lou</b> (30) <sup>##T+</sup> ..... 817-481-2573 <i>Real Estate</i> Lou@BHHSLLH.com	<b>RODRIGUEZ, Jesse</b> ..... 817-707-7600 <i>Self-Employed</i> cmredu@gmail.com
<b>BARRACLOUGH, Allen</b> (14) <sup>##</sup> ..... 817-300-9327 <i>Training - Org. Dev.</i> abear727@aol.com	<b>HINTON, Deb</b> ..... 817-657-4772 <i>Retired</i> mardebev@verizon.net	<b>RODRIGUEZ, Nadine</b> (H) ..... 817-410-3583 <i>Events Crd.</i> nrodriguez@grapevintexasusa.gov
<b>BASS, Jill</b> <sup>#</sup> ..... 469-814-2547 <i>Administrator/PT</i> Jill.bass@baylorhealth.edu	<b>HORAK, Curtis</b> ..... 972-302-1907 <i>Sign Co. Owner</i> curt@prioritysignsandgraphics.com	<b>ROSS, Christian</b> ..... 817-601-5019 <i>Product Developer</i> hello@eightyninety.com
<b>BELOFF III, Alex</b> (46) <sup>#+</sup> ..... 817-556-1233 <i>Sales/Training</i> alexbeloff@verizon.net	<b>HUFFMAN, Darrell</b> <sup>#T</sup> ..... 817-366-5271 <i>Deputy Constable</i> dwh5122@msn.com	<b>RUMBELOW, Bruno</b> (1) <sup>#T</sup> ..... 817-410-3104 <i>Municipal Admin.</i> brumbelow@grapevintexas.gov
<b>BERGES, Jeneria</b> <sup>#</sup> ..... 972-304-4368 <i>Non-Profit E.D.</i> jbeddr@gmail.com	<b>HUMBLE, Gary</b> <sup>#</sup> ..... 817-798-8091 <i>Entrepreneur</i> me@garyhumble.com	<b>RYAN, Robin</b> (4) <sup>#T</sup> ..... 817-251-5501 <i>Superintendent</i> Robin.Ryan@GCISD.net
<b>BERGLUND, Bret</b> (2) <sup>#T</sup> ..... 817-455-1241 <i>Service Manager</i> babgsxr@gmail.com	<b>HUTTON, Traci D.</b> (5) <sup>#</sup> ..... 817-442-9352 <i>Attorney</i> Traci@TraciHutton.com	<b>SALAME, Eddie</b> (3) <sup>#</sup> ..... 817-410-3225 <i>Police Administration</i> esalame@grapevintexas.gov
<b>BOHSALI-GOURY, Yasmine</b> (H) <sup>#</sup> ..... 817-247-9895 <i>Restaurateur</i> yasmine316@hotmail.com	<b>JANICEK, Steve</b> <sup>#</sup> ..... 682-888-6506 <i>Corporate Transportation</i> swjanicek@aol.com	<b>SALAME, Margie</b> ..... 817-366-5499 <i>Realtor</i> margiesalame@gmail.com
<b>BRATTON, Sheri</b> ..... 817-908-9767 <i>Marketing / Admin</i> Srf0001@hotmail.com	<b>JAY, Randy</b> ..... 817-798-6246 <i>Bank Lending</i> randy.jay@go2fht.com	<b>SAYERS, Merlyn</b> <sup>#</sup> ..... 817-412-5101 <i>Blood Bank Mgt.</i> msayers@carterbloodcare.org
<b>BRECHT, Jennifer</b> <sup>#</sup> ..... 817-296-8675 <i>Insurance</i> jbrecht@brechtassoc.com	<b>JOHNSTON, Don</b> <sup>#</sup> ..... 682-325-5202 <i>Banking</i> djohnston@nstarbank.com	<b>SCHAEFER, Shonda</b> <sup>#</sup> ..... 817-657-1017 <i>Non-Profit Mgt.</i> sschaefer@gracegrapevine.org
<b>BROWN, Darrell</b> ..... 817-564-3443 <i>Firefighter</i> DBrown@GrapevineTexas.gov	<b>JONES, Dick</b> (E) <sup>#</sup> ..... 817-421-4617 <i>Pest Control Owner</i> Djpp57@verizon.net	<b>SCHRIEVER, Stacy</b> <sup>#T</sup> ..... 817-707-5454 <i>Mortgage Banker</i> stacylynnschriever@gmail.com
<b>BROWN, Kelly</b> <sup>#</sup> ..... 817-481-7025 <i>Chiropractor</i> brownchiropracticca@gmail.com	<b>JUNGE, Marci</b> (26) <sup>##</sup> ..... 817-366-6138 <i>Interior Designer</i> mjunge@aol.com	<b>SCHULTZ, Kirk</b> ..... 515-250-9166 <i>Trainer</i> kirkschultz@gmail.com
<b>BROWN, LeAnn</b> (2) <sup>#</sup> ..... 817-313-3107 <i>Real Estate</i> labrown@silveroakcre.com	<b>KANE, Janice</b> <sup>#</sup> (5) ..... 817-251-5480 <i>Foundation E.D.</i> Janice.kane@gcisd.net	<b>SCOTT, Robyn</b> <sup>T</sup> <sup>#</sup> ..... 817-488-2733 <i>Financial Advisor</i> Robyn.scott@edwardjones.com
<b>BROWN, Michael</b> (1) <sup>#</sup> ..... 817-874-7817 <i>Financial Advisor</i> Michael.Brown@edwardjones.com	<b>KELLY, Mark Lucas</b> <sup>#</sup> (1) ..... 817-313-8288 <i>Funeral Home</i> mkelly@familyowned.net	<b>SHERMAN, Judy</b> (9) <sup>#+</sup> ..... 817-366-1119 <i>Financial Advisor</i> judysherman_2000@yahoo.com
<b>BUFFINGTON, Bill</b> <sup>#</sup> ..... 214-2058-7408 <i>Video Productions</i> auditvisuals@gmail.com	<b>KERCHEVAL, Kirby</b> ..... 817-328-1924 <i>Commercial Lending</i> KirbyKercheval@gmail.com	<b>SIBLEY, Melburn</b> (E) <sup>##</sup> ..... 817-329-0821 <i>Pastor</i> jmelburn@aol.com
<b>BURRUS, Bob</b> (E) <sup>#</sup> ..... 817-223-5406 <i>Retired</i> bobburrus7@gmail.com	<b>LEASE, Carolyn</b> <sup>#</sup> ..... 817-501-8596 <i>Sales</i> Carolyn@cavnarsmith.com	<b>SIGLER, JR., E.A.</b> (E) <sup>#</sup> ..... 817-267-6426 <i>School Administrator</i> esigler1@att.net
<b>CARNES, Matt</b> <sup>#</sup> ..... 817-722-8811 <i>Marketing</i> matt.carnes@verizon.net	<b>LUERS, Dennis</b> <sup>##</sup> ..... 817-832-5886 <i>Real Estate</i> Dennisluers@verizon.net	<b>SLECHTA, Paul</b> <sup>T</sup> ..... 817-488-4151 <i>Embroidery/Owner</i> paul@pandasportswear.com
<b>COPPAGE, Paul</b> (11) <sup>#T</sup> ..... 214-226-0013 <i>Real Estate</i> paulcoppage@yahoo.com	<b>LUERS, Jan Smith</b> (2) <sup>#</sup> ..... 214-202-8700 <i>Event Planning</i> rbsjss@verizon.net	<b>SMITH, Peggy</b> <sup>#</sup> (H) ..... 817-424-1699 <i>Retired</i>
<b>CORSE, Brandon</b> <sup>+</sup> ..... 817-608-6868 <i>Financial Advisor</i> brandon.corse@edwardjones.com	<b>MANGRUM, Michael</b> ..... 469-989-7371 <i>Financial Advisor</i> mmangrum@wradvisors.com	<b>SMITH, Tim</b> PDG (2) <sup>##</sup> ..... 405-207-1019 <i>HR: Training &amp; Dev.</i> tansonsmith@gmail.com
<b>COY, Chris</b> (8) <sup>#</sup> ..... 817-689-9899 <i>Corporate Finance</i> chriscoydfw@gmail.com	<b>MATTISON, Ralph</b> <sup>#</sup> ..... 972-897-0117 <i>Winery Owner</i> MattisonR@hotmail.com	<b>STACY, Bruce</b> (2) <sup>#</sup> ..... 337-296-5475 <i>Retired</i> Abs.cfs@verizon.net
<b>COY, Traci</b> ..... 817-729-0963 <i>CPA</i> traci@tracicoypca.com	<b>MCNAMARA, Kevin</b> ..... 972-921-5835 <i>Restaurant Owner</i> Kevin@WiseGuysTX.com	<b>STEWART, Roy</b> (E) <sup>##</sup> ..... 817-481-5824 <i>Real Estate Dev.</i> roy_stewart@peoplepc.com
<b>DAVIS, Ken</b> ..... 817-846-7897 <i>Automotive Sales</i> Ken.Davis@Grubbs.com	<b>MEEK, Debi</b> <sup>#</sup> ..... 817-800-0804 <i>Retail Mgt.</i> debimeek@hotmail.com	<b>TABER, Jeff</b> (2) ..... 405-203-5250 <i>Business Consultant</i> jefftaber@hotmail.com
<b>DODSON, Lee</b> <sup>#</sup> ..... 817-481-1036 <i>Dentist</i> lcdds@aol.com	<b>MILLER, Tom</b> ..... 817-706-8733 <i>Owner</i> tom@theliftoffice.com	<b>TATE, William "Bill"</b> <sup>#T</sup> ..... 817-488-8668 <i>Attorney</i> wdteate@verizon.net
<b>DORTCH, Jack</b> (38) <sup>#</sup> ..... 817-481-1421 <i>Insurance</i> jdortch@farmersagent.com	<b>MILNER, Walt</b> (29) PDG <sup>##</sup> ..... 817-283-6450 <i>Banker</i> WMilner744@aol.com	<b>TELLIN, Mary Jo</b> ..... 817-807-3962 <i>Chamber of Commerce</i> MaryJo@GrapevineChamber.org
<b>ECKMANN, Pamela</b> ..... 817-251-5962 <i>Chiropractor</i> DrPamEck@yahoo.com	<b>MITCHELL, Kevin</b> <sup>T</sup> ..... 817-253-9327 <i>Parks Director</i> KMitchell@grapevintexas.gov	<b>THOMAS, Jake</b> ..... 972-891-2504 <i>Auto Dent Removal</i> Jake@Dentless.net
<b>FANTZ, Debra</b> ..... 817-310-3064 <i>Independent Sales Dir.</i> debfantz@aol.com	<b>MOLLET, John</b> <sup>#</sup> ..... 817-481-2559 <i>Pastor</i> JohnM@FUMCG.org	<b>TORRES-LEPP, Amy</b> ..... 214-803-2765 <i>Title Insurance</i> Amy@alamotitletexas.com
<b>FICKES, Gary</b> <sup>#T</sup> ..... 817-581-3600 <i>County Government</i> gfickes650@aol.com	<b>NAVARRO, Richard</b> ..... 888-505-2803 <i>Consultant</i> Creativemind.nav@gmail.com	<b>VAN DYKE, Bob</b> (22) <sup>##</sup> ..... 817-576-2323 <i>Charter Financial Consultant</i> Robert.VanDyke@Prudential.com
<b>FINDLAY, Debra</b> ..... 626-201-8105 <i>CPA</i> debrafindlay@sbcglobal.net	<b>NEAL, Nathaniel</b> (H) ..... 817-329-9911 <i>Printing</i> neal@njgdinc.com	<b>WALSH, Bill</b> (9) <sup>#</sup> ..... 817-421-0197 <i>Personnel Mgt.</i> billwalshxt@verizon.net
<b>FOLIARD, Edward</b> ..... 708-305-4721 <i>Retired Fire Chief</i> EdwardFolliard@gmail.com	<b>NEALY, Tina</b> <sup>#</sup> ..... 817-329-1668 <i>Events Planning</i> weddings@paradisecovetx.com	<b>WEBSTER, Terry</b> (E) <sup>#</sup> ..... 214-706-8080 <i>Banker</i> terry.webster@bbvacompass.com
<b>FRANCISCO, Bill</b> ..... 817-946-7785 <i>Sales Management</i> bfrancisco@att.net	<b>NICHOLS, Morgan</b> ..... 805-368-3001 <i>Financial Advisor</i> morgan.nichols@ampf.com	<b>WESTFALL, Rick</b> ..... 817-925-9063 <i>Education Administration</i> Rick.Westfall@GCISD.net
<b>FRANK, Wayne Paul</b> (6) <sup>##</sup> ..... 817-949-2161 <i>Attorney</i> wpfatty@aol.com	<b>NIX, David</b> (H) ..... 817-975-7720 <i>CPA</i> redz28@att.net	<b>WHITE, MATTHEW</b> (H) ..... 254-368-6725 <i>School Administration</i> Matthew.White@gcisd.net
<b>FRANKS, Jon Michael</b> <sup>#</sup> ..... 817-329-5573 <i>Attorney</i> jonmfranks5@gmail.com	<b>NORTON, Bill</b> ..... 817-498-9159 <i>Technical Analyst</i> wnorton7@hotmail.com	<b>WHITLEY, Rob</b> <sup>#</sup> ..... 817-296-1659 <i>Commercial Cleaning</i> rwhitleyent@aol.com
<b>FREE, Elaine</b> (27) <sup>##</sup> ..... 214-534-1760 <i>Ed. Foundation Consulting</i> Elainefree1@charter.net	<b>O'DANIEL, Bill</b> ..... 817-310-3555 <i>Banker</i> bodaniel@bnkwest.com	<b>WILBANKS, Paula</b> (H) ..... 817-223-4105 <i>Retired Teacher</i> gigipw@aol.com
<b>FREED, Darlene</b> <sup>#</sup> ..... 817-480-6434 <i>Real Estate</i> Jfreed1@hotmail.com	<b>O'DELL, Duff</b> (9) <sup>##T</sup> ..... 214-478-3750 <i>Sales/Marketing</i> pdodell@verizon.net	<b>WOODS, Maybelle</b> <sup>#</sup> (H) ..... 817-481-3846 <i>Retired</i>
<b>GILLETTE, Edie</b> (E) <sup>##</sup> ..... 817-481-5050 <i>Public Relations</i> edie_gw@verizon.net	<b>PATTERSON, Allison</b> (1) <sup>##</sup> ..... 817-896-1560 <i>Health Management</i> Allison@cover-tek.com	
<b>GOBEN, Allen</b> ..... 817-515-6670 <i>College Admin.</i> Allen.Goben@ttcd.edu	<b>PINEIDER, Paul</b> (14) <sup>##</sup> ..... 817-410-3700 <i>CPA</i> p.pineider@pfacpa.com	
<b>GRAVES, Allan</b> <sup>#</sup> ..... 817-552-7742 <i>Attorney</i> ag@all-lawfirm.com	<b>QUALLS, Laura</b> ..... 972-814-0960 <i>Travel Agent</i> lqualls@dreamvacations.com	
<b>GRAVES, Angela</b> ..... 817-553-2500 <i>Banking</i> Angela.Graves@go2fht.com	<b>RAMSEY, Jan</b> (1) <sup>#</sup> ..... 817-371-1393 <i>Real Estate</i> janramsey@remax.net	
<b>GRAY, John</b> (6) <sup>##</sup> ..... 817-701-6349 <i>Petroleum Refining</i> jhghshelton@gmail.com		

\* Indicates a new Red Badge member (123)