



# Grapevine Rotary Club

Grapevine, Texas • Chartered 1967  
District #5790 • Club #1793  
www.grapevinerotary.com  
November 16, 2016

Meeting Time:  
Wednesday Noon  
Lancaster Theater  
308 South Main

## Coming Events

- 11/16 **Rotary Foundation Meeting**  
6:00 p.m.  
Main Street Bakery
- 11/19 **Community Clean Up Day**  
9:00 - 11:00 a.m.  
Meadowmere Park,  
3000 Meadowmere Lane.
- 12/07 **Rotary Blood Drive**  
The REC
- 12/08 **Rotary Board Meeting**  
4:00 p.m.  
Grapevine Chamber
- 12/13 **Rotary Christmas Party**  
**TUESDAY!!! 6:30 - 10:00 pm**  
Cowboy's Golf Club  
1600 Fairway Drive
- 06/10-14, 2017 **Rotary International Convention, Atlanta GA**

Log on to our Website:  
[www.GrapevineRotary.com](http://www.GrapevineRotary.com)

Like us on Facebook at:  
<http://www.facebook.com/pages/Grapevine-Rotary>

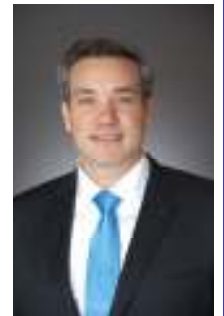
### Special Thanks to

**Rotary Bulletin Sponsor**  
Nathaniel Neal, Jake Garcia & Oscar Romero  
**NJ Graphic Design Inc.**  
203 E. Worth St., Grapevine, TX 76051  
(817)329-9911

For bulletin updates, contact RaDonna Hessel:  
RaDonna@GrapevineChamber.org  
or call 817-481-1522

## PROGRAM- Peace and Conflict Resolution

### Jeff Whitfield



Jeff Whitfield practices law in the Litigation, Appellate, and Public Law groups at Kelly Hart & Hallman in Fort Worth, Texas. He represents individuals and entities facing a wide variety of legal and policy challenges. He has been elected by his peers as a Fellow of the Texas Bar Foundation, and honored as a Texas Super Lawyer and a Top Attorney in Fort Worth every year since 2012.

He dedicates a significant portion of his time to community service. He is a Founding Member and the former Chair of Texas Lawyers for Texas Veterans (TLTV), an organization that has provided pro bono legal services to thousands of veterans over the last five years. His work with veterans was highlighted in the cover story for Texas Super Lawyers Magazine in 2014 ("At Your Service: Lessons Learned in the Air Force Inspire Jeff Whitfield Both On and Off Duty"), in media interviews on veterans' issues, and by his selection for the Kelly Hart & Hallman Pro Bono Award in 2013. He also serves on the Board of Governors of B.H. Carroll Theological Institute. As a Rotary Peace Fellow, he speaks frequently to groups across the country on conflict resolution and the role of Rotary in promoting peace.

Before entering private practice, Jeff served with the Prosecutor at the International Criminal Tribunal for Former Yugoslavia, in the Hague, Netherlands, assisting with the prosecution of those responsible for the genocide at Srebrenica. When he returned from the Netherlands, he was a law clerk to the Honorable Rhesa H. Barksdale on the U.S. Fifth Circuit Court of Appeals.

Prior to law school, he served as an Air Force Officer. While with the Air Force Legislative Liaison directorate, he was an initial contact in the Senate Liaison Office for information about the bombing of Air Force dormitories in Saudi Arabia. As an Air Force Contracting Officer, he led negotiations with the company whose scientists were researching the effects of Agent Orange on Air Force personnel. As Executive Officer to the Director of Contracting, he helped manage a team of more than 200 people, handling over 2500 contracts valued in excess of \$2.5 billion.

Jeff received a J.D., with honors, from the University of Texas School of Law, working his way through school as legislative aide to Texas State Senator John Whitmire. His duties included coordinating with federal agencies and foreign governments to resolve concerns over foreign citizens in Texas prisons. Before law school, he spent two years as a Fulbright Scholar and Rotary World Peace Fellow in England, receiving an M.A. in Peace Studies and an M.Phil. in Conflict Resolution from the University of Bradford. He graduated as a Distinguished Graduate from the U.S. Air Force Academy, having been recognized as the Outstanding Graduate in Legal Studies, the Outstanding Cadet in Military Arts & Sciences, and a Cadet Group Commander.

He and his wife, Shelly, both grew up in Fort Worth, where they are now raising their son, Knox.

## Upcoming Program

**November 23, 2016**  
*No Meeting - Happy Thanksgiving!!!*

**November 30, 2016**  
*Willie Pile - Increase Your Odds*

**December 7, 2016**  
*Grapevine High School Choir - Holiday Music*

**TUESDAY, December 13, 2016**  
*Rotary Christmas Party - Cowboys Golf Club  
6:30 - 10:00 p.m. RSVP - Alicia Barker*

## Rotary Four-Way Test

Of the things we think, say or do:

1. Is it the **TRUTH**?
2. Is it **FAIR** to all concerned?
3. Will it build **GOODWILL** and **BETTER FRIENDSHIPS**?
4. Will it be **BENEFICIAL** to all concerned?





# Leadership

## Club Officers 2016-2017

**Juneria Berges**  
*President*

**Eddie Salame**  
*Vice President & President Elect*

**Janice Kane**  
*Vice President & President Elect  
Nominee*

**LeAnn Brown**  
*Immediate Past President*

**Janice Kane**  
*Secretary*

**Kirby Kercheval**  
*Treasurer*

**Wayne Paul Frank**  
*Sergeants at Arms*

**Allen Barraclough**  
*Strategic Planning*

...

## Club Directors

### 2016-2017

**Rick Westfall - Vocational**  
**Lou Hillman - International**  
**Allison Patterson - Club Service**  
**Mary Jo Tellin - Community**  
**Darlene Freed - Youth in Service**

### 2017-2018

**Robyn Scott - Vocational**  
**Morgan Nichols - International**  
**Jared Richardson - Club Service**  
**Kevin McNamara - Community**  
**Brandon Corse - Youth in Service**

### Permanent

**Conrad Heede, PDG**  
**Walt Milner, PDG**  
**Tim Smith, PDG**

## Special Thanks to our Caterers:

Casey Owens, Owner



413 E. Northwest Highway, Grapevine, TX 76051  
(817) 481-3212

# Grapevine Rotary Christmas Party

**Tuesday, December 13, 2016**

**6:30 p.m. - 10:00 p.m.**

**Cowboy's Golf Club, 1600 Fairway Drive, Grapevine**

Rotarians are Hosted by the Club

Guest—\$50 per person

**Reservations to be made with Alicia Barker**  
**ahbbtb@verizon.net**



## Rotary's Community Service Team is Hosting

### A Community Clean Up Day

**November 19, 2016**  
**9:00 – 11:00 a.m.**

Bring the Whole Family!  
Meadowmere Park,  
3000 Meadowmere Lane.  
We will do a beach refurbishment.  
Supplies will be Provided  
Wear Closed-Toed Shoes

A Delicious Lunch will be served at  
11:00 a.m.



Questions – Mary Jo Tellin at 817-807

2962 / [marjio@grapevinechamber.org](mailto:marjio@grapevinechamber.org)

## GRAPEVINE ROTARY CLUB BLOOD DRIVE SERVING OUR COMMUNITY!

Roger Ackley and Committee are planning the  
Grapevine Rotary Club Blood Drive

**December 7, 2016**  
**At The REC**

Please mark these important dates on your



## Leadership Moment

“Peace is not something you wish for; it’s something you do, something you are and something you give away.”

*John Lennon*

## Birthdays

Please join us in celebrating the Birthdays of the following members this month:

### November 2016

9	Jake Thomas
10	Carolyn Lease
25	Gary Fickes
28	Edward Folliard
29	E.A. Sigler



## Anniversaries

Please join us in celebrating the anniversaries of the following members this month:

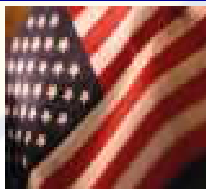
### November, 2016

7	Robyn Scott (Dwayne)
8	Morgan Nichols (Brian)
23	Kevin Mitchell (Jennifer)



## Flag Days

Meet at 6:45 AM at the Depot to put out flags.  
Meet at 5:45 PM at the Depot to pick up flags.



<b>Independence Day</b>	July 4, 2016
<b>Labor Day</b>	September 5, 2016
<b>Remembering 9-11</b>	September 11, 2016
* At Memorial Site (Texan Trail & Hwy 26)	
<b>Columbus Day</b>	October 10, 2016
<b>Veteran's Day</b>	November 11, 2016
<b>Martin Luther King Day</b>	January 16, 2017
<b>President's Day</b>	February 20, 2017
<b>Peace Officers Memorial Day</b>	May 15, 2017
<b>Memorial Day</b>	May 29, 2017
<b>Flag Day</b>	June 14, 2017

## Grapevine Rotary Club 2016-2017 Committee And Chairmanships

### CLUB SERVICE

**Directors:** Allison Patterson, Jared Richardson

Programs:	Elaine Free
Public Relations/Social Media:	Deb Hinton
	Allison Patterson
Newsletter/Directory:	RaDonna Hessel
Internet Support/Website:	Allison Patterson
Holiday Party:	Alicia Barker
Historical Committee:	Lou Hillman
New Members:	Eddie Salame
Fireside hat:	Walt Milner
Membership and Retention	Walt Milner
	Tim Smith
Freshman Committee:	Allen Barraclough
Scholarship Fund Raising:	RaDonna Hessel
Fun Committee:	LeAnn Brown
	Robyn Scott

Family of Rotary:	Helen Jean Lucas Reed
	Teri Rhodes

Strategic Planning:	Allen Barraclough
Strategic Initiatives Committees:	
Marketing GRC	Marci Junge
Engaging Millennials	Allen Barraclough

### COMMUNITY SERVICE

**Directors:** Mary Jo Tellin, Kevin McNamara

Festivals:	Bill Walsh,
	Bret Berglund, Rick Navarro and
	Dennis Luers

Main Street Flags:	Robin Ryan,
	Bruce Stacy, Bret Berglund,
	LeAnn Brown, Ralph Mattison

Special Olympics:	Jill Bass, Robyn Scott
-------------------	------------------------

Feed Our Kids:	Cas Findlay
----------------	-------------

DogFest:	Alicia Barker
----------	---------------

Student Computer Awards:	Bill Walsh
--------------------------	------------

Health & Blood:	Tina Neely,
	Roger Ackley

Middle School Adoption:	Rick Westfall
	Michael Brown, Mary Jo Tellin

Strategic Initiatives Committees:	
More Community Service in Grapevine	Janice Kane

### VOCATIONAL SERVICE

**Directors:** Rick Westfall, Robyn Scott

Vocational Service Awards:	RaDonna Hessel
Ken Diehm Community Service Award:	

	Melburn Sibley
--	----------------

Spirit Awards:	Debi Meek
----------------	-----------

RITE:	Eddie Salame
-------	--------------

### YOUTH IN SERVICE

**Directors:** Darlene Freed, Brandon Corse

4-Way Speech Contest:	Jennifer Brecht
	Carol Record

Scholarship Awards:	Jeff Taber
GHS & CHHS Interact	Darlene Freed
	Juneria Berges

RYLA:	Darlene Freed
-------	---------------

Rotary Youth Exchange:	Janice Kane
------------------------	-------------

### INTERNATIONAL SERVICE

**Directors:** Lou Hillman, Morgan Nichols

Rotary Foundation:	Conrad Heede
--------------------	--------------

Global Grants:	Conrad Heede
----------------	--------------

Wine Fellowship:	Marci Junge
------------------	-------------

	Conrad Heede
--	--------------

## Rotary International Officers

**John F. Germ**

Rotary Club of Chattanooga, Tennessee  
*Rotary International President*

**Mary Ann McDuff**

The Rotary Club of Denton  
*Governor District 5790*

**Marci Junge**

The Rotary Club of Grapevine  
*Lieutenant Governor East*

**Margaret Potter**

The Rotary Club of Metroport  
*Assistant Governor District 5790*

**Conrad Heede**

**Walt Milner**

**Tim Smith**

*GRC Past District Governors*

## Nearby Clubs for Make-Up Meetings

### Arlington

Thursdays at Noon at First United  
Methodist Church (313 N. Center)

### Arlington North

Mondays at 11:50 AM at Olenjack's Grille  
(770 Road to Six Flags East, Suite 100)

### Arlington Sunrise

Fridays at 6:45 a.m. Rolling Hills Country  
Club, 401 East Lamar Blvd.

### Arlington Sunset

Tuesdays at 6:00 PM at J Gilligan's  
(407 East South Street, Arlington)

### Arlington West

Tuesdays at Noon at Shady Valley Golf Club  
(4001 West Park Row, Arlington)

### Colleyville

Tuesday at Noon at Ruggeri's Italian  
Ristorante, (32 Village Lane)

### Eagle Mountain - Saginaw

Wednesdays 7:00 AM at Hollenstein Career  
and Technology Center • 5501 Marine  
Creek Parkway, Fort Worth, TX 76179

### Flower Mound

Thursdays at Noon at Salerno's  
Restaurant (3407 Long Prairie Rd., F.M)

### Fort Worth East

Mondays at Noon at Meadowbrook  
Methodist (3900 Meadowbrook)

### Fort Worth North

Wednesdays at Noon at Joe T. Garcia's  
( 2201 North Commerce, Fort Worth)

### HEB

Tuesdays, at Noon at 1st Baptist Church of  
Hurst (Norwood, south of Harwood)

### Irving-Las Colinas Rotary

Thursdays at Noon at Las Colinas Country  
Club

### Keller

Tuesday, Noon, Sky Creek Ranch Golf Club

### Lewisville

Wednesdays at Noon at Grotto Restaurant

### Lewisville Morning

Thursdays at 7:00 AM at the CCA  
Community Room, 200 S. Mill St.

### Metroport

Fridays at 7:00 AM at the Marriott-Solana

### Mid-Cities Pacesetters Rotary Club

Fridays, 7 AM (Texas Star Golf Course)

### Southlake

Friday at Noon at Timarron Country Club  
1400 Byron Nelson Parkway

# Grapevine Rotary Club Membership Roster

<b>ACKLEY, Roger</b> (2) <sup>#</sup> ..... 612-839-3866 <i>Retired</i> rogackley@msn.com	<b>GRIBBLE, Rocky</b> (15) <sup>#T</sup> ..... 817-481-8733 <i>Musical Entertainment</i> rockyg3495@aol.com	<b>QUALLS, Laura</b> ..... 972-814-0960 <i>Travel Agent</i> lqualls@dreamvacations.com
<b>ANALOVITCH, Jay</b> (1) <sup>#</sup> ..... 623-236-0724 <i>Hospice</i> Holdings48@hotmail.com	<b>GUM, Rhett</b> ..... 817-602-1494 <i>Congressional Outreach</i> Rhett.gum@mail.house.gov	<b>RAMSEY, Jan</b> (1) <sup>#</sup> ..... 817-371-1393 <i>Real Estate</i> janramsey@remax.net
<b>BAKALO, Yuliya</b> ..... 817-908-3717 <i>Realtor</i> yuliyadfw@gmail.com	<b>HAWKINS, Shawn</b> ..... 817-821-8966 <i>Computer Consulting</i> Shawn@bdunn.com	<b>RECORD, Carol Ann</b> (20) <sup>##</sup> ..... 817-488-1008 <i>Pastor</i> revcarol@flash.net
<b>BALVIN, Marvin</b> (3) <sup>##T</sup> ..... 817-328-1144 <i>Realtor</i> marvinbalvin@kw.com	<b>HEEDE, Conrad</b> (41) <sup>PDG ##</sup> ..... 817-235-8110 <i>Real Estate Mgt.</i> ccheede@aol.com	<b>REED, Helen Jean Lucas Reed</b> # ..... 817-329-4776 <i>Public Relations</i> hlreed4@msn.com
<b>BARKER, Alicia</b> ..... 817-673-1561 <i>Office Furniture Sales</i> ahbbtb@verizon.net	<b>HESEL, RaDonna</b> (14) <sup>##T</sup> ..... 817 481-1522 <i>Chamber of Commerce CEO</i> RaDonna@GrapevineChamber.org	<b>RICHARDSON, Jared</b> ..... 214-695-2733 <i>Sales Manager</i> jbrichardson@sewell.com
<b>BARRACLOUGH, Allen</b> (15) <sup>##</sup> ..... 817-300-9327 <i>Training - Org. Dev.</i> abeard727@aol.com	<b>HILLMAN, Lou</b> (31) <sup>##T+</sup> ..... 817-481-2573 <i>Real Estate</i> Lou@BHHSLLH.com	<b>RHODES, Teri</b> (3) <sup>#</sup> ..... 817-797-5465 <i>Realtor</i> TeriRhodes@msn.com
<b>BASS, Jill</b> # ..... 469-814-2547 <i>Administrator/PT</i> Jill.bass@baylorhealth.edu	<b>HINTON, Deb</b> ..... 817-657-4772 <i>Retired</i> mardebev@verizon.net	<b>RHODES, Keith</b> # ..... 949-300-5426 <i>CEO</i> Keith.Rhodes@redcross.com
<b>BELOFF III, Alex</b> (47) <sup>#+</sup> ..... 817-556-1233 <i>Sales/Training</i> alexbeloff@verizon.net	<b>HUFFMAN, Darrell</b> #T ..... 817-366-5271 <i>Deputy Constable</i> dwh5122@msn.com	<b>RODRIGUEZ, Jesse</b> ..... 817-707-7600 <i>Self-Employed</i> cmredu@gmail.com
<b>BERGES, Juneria</b> (1) <sup>#</sup> ..... 972-304-4368 <i>Non-Profit E.D.</i> jbeddr@gmail.com	<b>HUTTON, Traci D.</b> (5) <sup>#</sup> ..... 817-442-9352 <i>Attorney</i> Traci@TraciHutton.com	<b>RODRIGUEZ, Nadine</b> (H) ..... 817-410-3583 <i>Events Crd.</i> nrodriguez@grapevinetexasusa.gov
<b>BERGLUND, Bret</b> (2) <sup>#T</sup> ..... 817-455-1241 <i>Service Manager</i> babgsxr@gmail.com	<b>JANICEK, Steve</b> # ..... 682-888-6506 <i>Corporate Transportation</i> swjanicek@aol.com	<b>ROSS, Christian</b> ..... 817-601-5019 <i>Product Developer</i> hello@eightyniney.com
<b>BLEDSON, Juli</b> ..... 817-300-7159 <i>Residential Realtor</i> juli@jubilbleson.com	<b>JAY, Randy</b> ..... 817-798-6246 <i>Bank Lending</i> randy.jay@go2fbt.com	<b>RUMBELOW, Bruno</b> (1) <sup>#T</sup> ..... 817-410-3104 <i>Municipal Admin.</i> brumbelow@grapevinetexas.gov
<b>BOHSALI-GOURY, Yasmine</b> (H) # ..... 817-247-9895 <i>Restaurateur</i> yasmine316@hotmail.com	<b>JOHNSTON, Don</b> # ..... 682-325-5202 <i>Banking</i> djohnston@premierbank.com	<b>RYAN, Robin</b> (4) <sup>#T</sup> ..... 817-251-5501 <i>Superintendent</i> Robin.Ryan@GCISD.net
<b>BRATTON, Sheri</b> (1) ..... 817-908-9767 <i>Marketing / Admin</i> Srf0001@hotmail.com	<b>JONES, Dick</b> (E) <sup>#</sup> ..... 817-421-4617 <i>Pest Control Owner</i> Djppj57@verizon.net	<b>SALAME, Eddie</b> (3) <sup>#</sup> ..... 817-410-3225 <i>Police Administration</i> esalame@grapevinetexas.gov
<b>BRECHT, Jennifer</b> # ..... 817-296-8675 <i>Insurance</i> jbrecht@brechtassoc.com	<b>JUNGE, Marci</b> (27) <sup>##+</sup> ..... 817-366-6138 <i>Interior Designer</i> mjunge@aol.com	<b>SALAME, Margie</b> ..... 817-366-5499 <i>Realtor</i> margiesalame@gmail.com
<b>BROWN, Darrell</b> ..... 817-564-3443 <i>Firefighter</i> DBrown@GrapevineTexas.gov	<b>KANE, Janice</b> # (6) ..... 817-251-5480 <i>Foundation E.D.</i> Janice.kane@gcisd.net	<b>SAYERS, Merlyn</b> # ..... 817-412-5101 <i>Blood Bank Mgt.</i> msayers@carterbloodcare.org
<b>BROWN, Kelly</b> # ..... 817-481-7025 <i>Chiropractor</i> brownchiropracticca@gmail.com	<b>KELLY, Mark Lucas</b> # (1) ..... 817-313-8288 <i>Funeral Home</i> mkelly@familyowned.net	<b>SCHAEFER, Shonda</b> # ..... 817-657-1017 <i>Non-Profit Mgt.</i> sschaefer@gracegrapevine.org
<b>BROWN, LeAnn</b> (3) <sup>#</sup> ..... 817-313-3107 <i>Real Estate</i> labrown@silveroakcre.com	<b>KERCHEVAL, Kirby</b> ..... 817-328-1924 <i>Commercial Lending</i> KirbyKercheval@gmail.com	<b>SCHRIEVER, Stacy</b> #T ..... 817-707-5454 <i>Mortgage Banker</i> stacylynnschriever@gmail.com
<b>BROWN, Michael</b> (1) <sup>#</sup> ..... 817-874-7817 <i>Financial Advisor</i> Michael.Brown@edwardjones.com	<b>KIMBRO, Marshall</b> ..... 817-287-5616 <i>Banker</i> marshall.kimbrow@legacytexas.com	<b>SCHULTZ, Kirk</b> ..... 515-250-9166 <i>Trainer</i> kirkschultz@gmail.com
<b>BURRUS, Bob</b> (E) <sup>##</sup> ..... 817-223-5406 <i>Retired</i> bobburrus7@gmail.com	<b>LEASE, Carolyn</b> # ..... 817-501-8596 <i>Sales</i> Carolyn@cavnarnsmith.com	<b>SCOTT, Robyn</b> #T ..... 817-488-2733 <i>Financial Advisor</i> Robyn.scott@edwardjones.com
<b>CARNES, Matt</b> # ..... 817-722-8811 <i>Marketing</i> matt.carnes@verizon.net	<b>LUERS, Dennis</b> #* ..... 817-832-5886 <i>Real Estate</i> Dennisluers@verizon.net	<b>SHERMAN, Judy</b> (10) <sup>##+</sup> ..... 817-366-1119 <i>Financial Advisor</i> judysherman_2000@yahoo.com
<b>COPPAGE, Paul</b> (11) <sup>#T</sup> ..... 214-226-0013 <i>Real Estate</i> paulcoppage@yahoo.com	<b>LUERS, Jan Smith</b> (2) <sup>#</sup> ..... 214-202-8700 <i>Event Planning</i> rbsjss@verizon.net	<b>SIBLEY, Melburn</b> (E) <sup>##+</sup> ..... 817-329-0821 <i>Pastor</i> jmelburn@aol.com
<b>CORSE, Brandon</b> + ..... 817-608-6868 <i>Financial Advisor</i> brandon.corse@edwardjones.com	<b>MANGRUM, Michael</b> ..... 469-989-7371 <i>Financial Advisor</i> mmangrum@wradvisors.com	<b>SIGLER, JR., E.A.</b> (E) <sup>#</sup> ..... 817-267-6426 <i>School Administrator</i> esigler1@att.net
<b>COY, Chris</b> (8) <sup>#</sup> ..... 817-689-9899 <i>Corporate Finance</i> chriscoydfw@gmail.com	<b>MATTISON, Ralph</b> # ..... 972-897-0117 <i>Winery Owner</i> MattisonR@hotmail.com	<b>SLECHTA, Paul</b> # ..... 817-488-4151 <i>Embroidery/Owner</i> paul@pandasportswear.com
<b>COY, Traci</b> ..... 817-729-0963 <i>CPA</i> traci@tracicoypa.com	<b>MCHUGH, Angela</b> ..... 817-477-7424 <i>Owner</i> angelamchugh737@yahoo.com	<b>SMITH, Peggy</b> # (H) ..... 817-424-1699 <i>Retired</i>
<b>DAVIS, Ken</b> ..... 817-846-7897 <i>Automotive Sales</i> Ken.Davis@Grubbs.com	<b>MCNAMARA, Kevin</b> ..... 972-921-5835 <i>Restaurant Owner</i> Kevin@WiseGuysTX.com	<b>SMITH, Tim</b> PDG (3) <sup>##+</sup> ..... 405-207-1019 <i>HR: Training &amp; Dev.</i> tansonsmith@gmail.com
<b>DODSON, Lee</b> # ..... 817-481-1036 <i>Dentist</i> lcdds@aol.com	<b>MEEK, Debi</b> # ..... 817-800-0804 <i>Retail Mgt.</i> debimeek@hotmail.com	<b>STACY, Bruce</b> (2) <sup>#</sup> ..... 337-296-5475 <i>Retired</i> Abs.cfs@verizon.net
<b>DORTCH, Jack</b> (39) <sup>#</sup> ..... 817-481-1421 <i>Insurance</i> jdortch@farmersagent.com	<b>MILLER, Tom</b> ..... 817-706-8733 <i>Owner</i> tom@theliftoffice.com	<b>STEWART, Roy</b> (E) <sup>##</sup> ..... 817-481-5824 <i>Real Estate Dev.</i> roy_stewart@peoplepc.com
<b>ECKMANN, Pamela</b> ..... 817-251-5962 <i>Chiropractor</i> DrPamEck@yahoo.com	<b>MILNER, Walt</b> (30) <sup>PDG ##+</sup> ..... 817-283-6450 <i>Banker</i> WMilner744@aol.com	<b>TABER, Jeff</b> (3) ..... 405-203-5250 <i>Business Consultant</i> jefftaber@hotmail.com
<b>FANTZ, Debra</b> ..... 817-310-3064 <i>Independent Sales Dir.</i> debfantz@aol.com	<b>MITCHELL, Kevin</b> #T ..... 817-253-9327 <i>Parks Director</i> KMitchell@grapevinetexas.gov	<b>TATE, William "Bill"</b> #T ..... 817-488-8668 <i>Attorney</i> wdtate@verizon.net
<b>FICKES, Gary</b> #T ..... 817-581-3600 <i>County Government</i> gfickes650@aol.com	<b>MOLLET, John</b> # ..... 817-481-2559 <i>Pastor</i> JohnM@FUMCG.org	<b>TELLIN, Mary Jo</b> ..... 817-807-3962 <i>Chamber of Commerce</i> MaryJo@GrapevineChamber.org
<b>FINDLAY, Debra "Cas"</b> ..... 626-201-8105 <i>CPA</i> dcfindlay@mycasonline.com	<b>MOWERY, Colby</b> ..... 817-565-5353 <i>Community Outreach Center Mgr.</i> ColbyMowery@yahoo.com	<b>THOMAS, Jake</b> ..... 972-891-2504 <i>Auto Dent Removal</i> Jake@Dentless.net
<b>FOLIARD, Edward</b> ..... 708-305-4721 <i>Retired Fire Chief</i> EdwardFoliard@gmail.com	<b>NAVARRO, Richard</b> ..... 888-505-2803 <i>Consultant</i> Creativemind.nav@gmail.com	<b>TORRES-LEPP, Amy</b> ..... 214-803-2765 <i>Title Insurance</i> Amy@alamotitletexas.com
<b>FOX, Todd</b> ..... 972-835-9504 <i>Banker</i> todd.fox@frostbank.com	<b>NEAL, Nathaniel</b> (H) ..... 817-329-9911 <i>Printing</i> neal@njgdinc.com	<b>VAN DYKE, Bob</b> (23) <sup>##</sup> ..... 817-576-2323 <i>Financial Consultant</i> Robert.VanDyke@Prudential.com
<b>FRANCISCO, Bill</b> (1) <sup>#</sup> ..... 817-946-7785 <i>Sales Management</i> bfrancisco@att.net	<b>NEALY, Tina</b> # ..... 817-329-1668 <i>Events Planning</i> weddings@paradisecovetx.com	<b>WALSH, Bill</b> (10) <sup>#</sup> ..... 817-421-0197 <i>Personnel Mgt.</i> billwalshtx@verizon.net
<b>FRANK, Wayne Paul</b> (6) <sup>##</sup> ..... 817-949-2161 <i>Attorney</i> wpfatty@aol.com	<b>NICHOLS, Morgan</b> ..... 805-368-3001 <i>Financial Advisor</i> morgan.nichols@ampf.com	<b>WEBSTER, Terry</b> (E) <sup>#</sup> ..... 214-706-8080 <i>Banker</i> terry.webster@bbvacompass.com
<b>FRANKS, Jon Michael</b> # ..... 817-329-5573 <i>Attorney</i> jonmfranks5@gmail.com	<b>NIX, David</b> (H) ..... 817-975-7720 <i>.....</i> redz28@att.net	<b>WESTFALL, Rick</b> ..... 817-925-9063 <i>Education Administration</i> Rick.Westfall@GCISD.net
<b>FREE, Elaine</b> (28) <sup>##+</sup> ..... 214-534-1760 <i>Ed. Foundation Consulting</i> Elainefree1@charter.net	<b>NORTON, Bill</b> ..... 817-798-8305 <i>Technical Analyst</i> wnorton7@hotmail.com	<b>WHITE, MATTHEW</b> (H) ..... 254-368-6725 <i>School Administration</i> Matthew.White@gcisd.net
<b>FREED, Darlene</b> # ..... 817-480-6434 <i>Real Estate</i> Jfreed1@hotmail.com	<b>O'DANIEL, Bill</b> ..... 817-310-3555 <i>Banker</i> bodaniel@bnkwest.com	<b>WHITLEY, Rob</b> # ..... 817-296-1659 <i>Commercial Cleaning</i> rwhitleyent@att.net
<b>GILLETTE, Edie</b> (E) <sup>##+</sup> ..... 817-481-5050 <i>Public Relations</i> edie_gw@verizon.net	<b>O'DELL, Duff</b> (10) <sup>##T</sup> ..... 214-478-3750 <i>Sales/Marketing</i> pdodell@verizon.net	<b>WILBANKS, Paula</b> (H) ..... 817-223-4105 <i>Retired Teacher</i> gigipw@aol.com
<b>GOBEN, Allen</b> ..... 817-515-6670 <i>College Admin.</i> Allen.Goben@tccd.edu	<b>PATTERSON, Allison</b> (2) <sup>##+</sup> ..... 817-896-1560 <i>Health Management</i> Allison@cover-tek.com	<b>WOODS, Maybelle</b> # (H) ..... 817-481-3846 <i>Retired</i>
<b>GRAVES, Allan</b> # ..... 817-552-7742 <i>Attorney</i> ag@all-lawfirm.com	<b>PINEIDER, Paul</b> (14) <sup>##+</sup> ..... 817-410-3700 <i>CPA</i> p.pineider@pfacpa.com	
<b>GRAVES, Angela</b> (1) <sup>#</sup> ..... 817-553-2500 <i>Banking</i> Angela.Graves@go2fbt.com		
<b>GRAY, John</b> (6) <sup>##+</sup> ..... 817-701-6349 <i>Petroleum Refining</i> jhgshelton@gmail.com		

\* Indicates a new Red Badge member (125)