



# Grapevine Rotary Club

Grapevine, Texas • Chartered 1967  
District #5790 • Club #1793  
[www.grapevinerotary.com](http://www.grapevinerotary.com)

**October 19, 2016**

**Meeting Time:**  
Wednesday Noon  
Lancaster Theater  
308 South Main

## Coming Events

**10/19 Rotary Foundation Meeting**  
6:00 p.m.  
Main Street Bakery

**11/10 Rotary Board Meeting**  
4:00 p.m.  
Grapevine Chamber

**11/12 100th Birthday Party for  
The Rotary Foundation**  
Omni Hotel Fort Worth

**12/5-7 Rotary Blood Drive**

**06/10-14, 2017 Rotary International  
Convention, Atlanta GA**

**Log on to our Website:**  
[www.GrapevineRotary.com](http://www.GrapevineRotary.com)

**Like us on Facebook at:**  
[http://www.facebook.com/pages/  
Grapevine-Rotary](http://www.facebook.com/pages/Grapevine-Rotary)

## Special Thanks to

**Rotary Bulletin Sponsor**  
Nathaniel Neal, Jake Garcia & Oscar Romero  
**NJ Graphic Design Inc.**  
203 E. Worth St., Grapevine, TX 76051  
(817)329-9911

For bulletin updates, contact RaDonna Hessel:  
[RaDonna@GrapevineChamber.org](mailto:RaDonna@GrapevineChamber.org)

## **PROGRAM - My American Journey**

### ***Mimi Tran***



Mimi Tran is a Vice President at Frost Bank and serves as a private banker. She is responsible for helping clients navigate their sophisticated and diverse financial needs by providing access to Frost's network of banking, investment and insurance specialists.

Mimi's community involvement includes serving as Co-Chair for the Southlake Empowered Woman Luncheon, serving on the Board of Directors of the Southlake Chamber Commerce and Board of Directors of the Irving Healthcare Foundation. She is a past chair of the Carroll Education Foundation and has served on the Board of Directors of the Carroll Medical Academy and the AP Booster Club. Mimi is a proud member of the Colleyville Rotary Club.

Professionally, her financial credo is to make it easy to do business and treat everyone with dignity and respect. She believes in exhibiting genuine interest in delighting clients. She makes a deliberate effort to understand each client's needs and values and endeavors to be their trusted advisor.

Mimi and her family escaped from Vietnam in April 1975 when the North Vietnamese overran the South. Initially, they were settled in Florida. Her father quickly found a job in New Orleans working for Petroleum Helicopters International (PHI) flying out to oil rigs in the Gulf of Mexico. As a young girl she did not speak English. She spent 20 years in Louisiana where she earned a BS in Marketing at LSU before meeting her husband and moving to Irving, Texas. She has two children who attend the University of Texas in Austin. Her husband is a local pediatrician, and they reside in Southlake.

## **Upcoming Program**

October 26, 2016  
*TBD*

November 2, 2016  
*Bill Steele - The Underground World of Bill Steele*

November 9, 2016  
*Veterans' Day Program*

November 16, 2016  
*Jeff Whitfield - Peace and Conflict Resolution*

## **Rotary Four-Way Test**

**Of the things we think, say or do:**

1. Is it the **TRUTH**?
2. Is it **FAIR** to all concerned?
3. Will it build **GOODWILL** and **BETTER FRIENDSHIPS**?
4. Will it be **BENEFICIAL** to all concerned?





# Leadership

## Club Officers 2016-2017

**Juneria Berges**  
*President*

**Eddie Salame**  
*Vice President & President Elect*

**Janice Kane**  
*Vice President & President Elect  
Nominee*

**LeAnn Brown**  
*Immediate Past President*

**Janice Kane**  
*Secretary*

**Kirby Kercheval**  
*Treasurer*

**Wayne Paul Frank**  
*Sergeants at Arms*

**Allen Barraclough**  
*Strategic Planning*

...

## Club Directors

### 2016-2017

**Rick Westfall - Vocational**  
**Lou Hillman - International**  
**Allison Patterson - Club Service**  
**Mary Jo Tellin - Community**  
**Darlene Freed - Youth in Service**

### 2017-2018

**Robyn Scott - Vocational**  
**Morgan Nichols - International**  
**Jared Richardson - Club Service**  
**Kevin McNamara - Community**  
**Brandon Corse - Youth in Service**

### Permanent

**Conrad Heede, PDG**  
**Walt Milner, PDG**  
**Tim Smith, PDG**

### Special Thanks to our Caterers:

Casey Owens, Owner

**Bartley's BBQ**  
**Taste of Texas**

413 E. Northwest Highway, Grapevine, TX 76051  
(817) 481-3212



## GRAPEVINE ROTARY CLUB - SERVING OUR COMMUNITY!

Roger Ackley and Committee are in the planning process of the Grapevine Rotary Club Blood Drive which is targeted for December 5<sup>th</sup>, 6<sup>th</sup>, and 7<sup>th</sup>. Please mark these important dates on your calendar! The details will be coming in the near future

## GRAPEVINE ROTARY CLUB - SERVING OUR WORLD!

Our Grapevine Rotary Club received an Open World Grant! The 6 delegates from Serbia will arrive on November 4th. The delegates are five female journalism professionals accompanied by the male facilitator. All have good English skills. The delegates will be here for 8 nights. Our members can host a delegate for the entire week or just 4 nights, whatever is possible and convenient for you. The details are below:

**ARRIVAL:** Friday, November 4, 3:07 pm at DFW

**DEPARTURE:** Saturday, November 12, 4:10 pm—The delegates need to be at the airport by 2:00 pm.

### HOST RESPONSIBILITIES:

Transportation to and from activities (The families will coordinate to work around their schedules.) Private bedroom and bath  
Meals: Breakfast and some evening meals in your home.

Please notify **Judy Sherman** at i-phone 817-366-1119 or judysherman\_2000@yahoo.com if you are considering your family enjoying this wonderful world awareness adventure!

## Grapevine Middle School - Supporting Tomorrow's Leaders

Last week we had the opportunity to experience the awesome future when the STEM students from Grapevine Middle School shared in their learning process and excitement. While learning through action is fun, for some students school is a struggle, especially when their family cannot meet the financial needs for involvement. As an example, when a band instrument rental is \$150, or a pair of basketball shoes cost \$50, or when the laptop device fee is \$50, and a family can't meet the need. This is when Rotary can Serve Others!!! Take a few moments and make a donation either by check or through your Rotary bill to Grapevine Middle School. Your donation today can impact our entire community tomorrow!!! Contact Kirby Kercheval for donations.

## Celebrating 100 Years of Doing Good in the World



It's a party that you won't want to miss!

Join Governor Mary Ann at the 100th birthday party for The Rotary Foundation!

**Saturday, November 12, 2016**  
**Omni Hotel Fort Worth.**

You will have a great dinner, hear an energetic band, and participate in both a live and silent auction. It is a night to celebrate the 100th birthday of The Rotary Foundation. It is celebration, but it is an opportunity to witness some of our members receiving awards, and to hear one of our Rotary International Directors, Dean Rohrs. **Contact Janice Kane to make your reservations.**

## Leadership Moment

“Whether you think you can, or think you can’t. You’re right.”

*Henry Ford*

## Birthdays

Please join us in celebrating the Birthdays of the following members this month:

October 2016

1	Jan Smith Luers
3	Eddie Salame
4	Allison Patterson
6	Dennis Luers
11	Steve Janicek
30	Janice Kane



## Anniversaries

Please join us in celebrating the anniversaries of the following members this month:

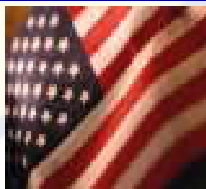
October, 2016

1	Debra Fantz (Michael)
1	Conrad Heede (Betty)
6	Dick Jones (Paula)
10	Bruce Stacy (Carolyn)
12	Allen Goben (Kelly)
16	Jennifer Brecht (Bill)
21	Jay Analovitch (Donna)



## Flag Days

Meet at 6:45 AM at the Depot to put out flags.  
Meet at 5:45 PM at the Depot to pick up flags.



<b>Independence Day</b>	July 4, 2016
<b>Labor Day</b>	September 5, 2016
<b>Remembering 9-11</b>	September 11, 2016
* At Memorial Site (Texan Trail & Hwy 26)	
<b>Columbus Day</b>	October 10, 2016
<b>Veteran's Day</b>	November 11, 2016
<b>Martin Luther King Day</b>	January 16, 2017
<b>President's Day</b>	February 20, 2017
<b>Peace Officers Memorial Day</b>	May 15, 2017
<b>Memorial Day</b>	May 29, 2017
<b>Flag Day</b>	June 14, 2017

## Grapevine Rotary Club 2016-2017 Committee And Chairmanships

### CLUB SERVICE

**Directors:** Allison Patterson, Jared Richardson

Programs:	Elaine Free
Public Relations/Social Media:	Deb Hinton
	Allison Patterson
Newsletter/Directory:	RaDonna Hessel
Internet Support/Website:	Allison Patterson
Holiday Party:	Alicia Barker
Historical Committee:	Lou Hillman
New Members:	Eddie Salame
Fireside hat:	Walt Milner
Membership and Retention	Walt Milner

Freshman Committee:	Allen Barraclough
Scholarship Fund Raising:	RaDonna Hessel
Fun Committee:	LeAnn Brown

Family of Rotary:	Helen Jean Lucas Reed
	Teri Rhodes

Strategic Planning:	Allen Barraclough
Strategic Initiatives Committees:	
Marketing GRC	Marci Junge
Engaging Millennials	Allen Barraclough

### COMMUNITY SERVICE

**Directors:** Mary Jo Tellin, Kevin McNamara

Festivals:	Bill Walsh,
	Bret Berglund, Rick Navarro and
	Dennis Luers

Main Street Flags:	Robin Ryan,
	Bruce Stacy, Bret Berglund,
	LeAnn Brown, Ralph Mattison

Special Olympics:	Jill Bass, Robyn Scott
Feed Our Kids:	Cas Findlay
DogFest:	Alicia Barker
Student Computer Awards:	Bill Walsh
Health & Blood:	Tina Neely,
	Roger Ackley

Middle School Adoption:	Rick Westfall
	Michael Brown, Mary Jo Tellin

Strategic Initiatives Committees:	
More Community Service in Grapevine	Janice Kane

### VOCATIONAL SERVICE

**Directors:** Rick Westfall, Robyn Scott

Vocational Service Awards:	RaDonna Hessel
Ken Diehm Community Service Award:	
	Melburn Sibley
	Debi Meek
	Eddie Salame

Spirit Awards:	
RITE:	

### YOUTH IN SERVICE

**Directors:** Darlene Freed, Brandon Corse

4-Way Speech Contest:	Jennifer Brecht
	Carol Record
Scholarship Awards:	Jeff Taber
GHS & CHHS Interact	Darlene Freed
	Juneria Berges
RYLA:	Darlene Freed
Rotary Youth Exchange:	Janice Kane

### INTERNATIONAL SERVICE

**Directors:** Lou Hillman, Morgan Nichols

Rotary Foundation:	Conrad Heede
Global Grants:	Conrad Heede
Wine Fellowship:	Marci Junge
	Conrad Heede

## Rotary International Officers

**John F. Germ**

Rotary Club of Chattanooga, Tennessee  
*Rotary International President*

**Mary Ann McDuff**

The Rotary Club of Denton  
*Governor District 5790*

**Marci Junge**

The Rotary Club of Grapevine  
*Lieutenant Governor East*

**Margaret Potter**

The Rotary Club of Metroport  
*Assistant Governor District 5790*

**Conrad Heede**

**Walt Milner**  
**Tim Smith**  
GRC Past District Governors

## Nearby Clubs for Make-Up Meetings

### Arlington

Thursdays at Noon at First United  
Methodist Church (313 N. Center)

### Arlington North

Mondays at 11:50 AM at Olenjack's Grille  
(770 Road to Six Flags East, Suite 100)

### Arlington Sunrise

Fridays at 6:45 a.m. Rolling Hills Country  
Club, 401 East Lamar Blvd.

### Arlington Sunset

Tuesdays at 6:00 PM at J Gilligan's  
(407 East South Street, Arlington)

### Arlington West

Tuesdays at Noon at Shady Valley Golf Club  
(4001 West Park Row, Arlington)

### Colleyville

Tuesday at Noon at Ruggeri's Italian  
Ristorante, (32 Village Lane)

### Eagle Mountain - Saginaw

Wednesdays 7:00 AM at Hollenstein Career  
and Technology Center • 5501 Marine  
Creek Parkway, Fort Worth, TX 76179

### Flower Mound

Thursdays at Noon at Salerno's  
Restaurant (3407 Long Prairie Rd., F.M)

### Fort Worth East

Mondays at Noon at Meadowbrook  
Methodist (3900 Meadowbrook)

### Fort Worth North

Wednesdays at Noon at Joe T. Garcia's  
( 2201 North Commerce, Fort Worth)

### HEB

Tuesdays, at Noon at 1st Baptist Church of  
Hurst (Norwood, south of Harwood)

### Irving-Las Colinas Rotary

Thursdays at Noon at Las Colinas Country  
Club

### Keller

Tuesday, Noon, Sky Creek Ranch Golf Club

### Lewisville

Wednesdays at Noon at Grotto Restaurant

### Lewisville Morning

Thursdays at 7:00 AM at the CCA  
Community Room, 200 S. Mill St.

### Metroport

Fridays at 7:00 AM at the Marriott-Solana

### Mid-Cities Pacesetters Rotary Club

Fridays, 7 AM (Texas Star Golf Course)

### Southlake

Friday at Noon at Timarron Country Club  
1400 Byron Nelson Parkway

# Grapevine Rotary Club Membership Roster

<b>ACKLEY, Roger</b> (2) <sup>#</sup> ..... 612-839-3866 <i>Retired</i> ..... rogackley@msn.com	<b>GRAY, John</b> (6) <sup>#**</sup> ..... 817-701-6349 <i>Petroleum Refining</i> ..... jhgshelton@gmail.com	<b>PATTERSON, Allison</b> (2) <sup>#**</sup> ..... 817-896-1560 <i>Health Management</i> ..... Allison@cover-tek.com
<b>ANALOVITCH, Jay</b> (1) <sup>#</sup> ..... 623-236-0724 <i>Hospice</i> ..... Holdings48@hotmail.com	<b>GRIBBLE, Rocky</b> (15) <sup>#†</sup> ..... 817-481-8733 <i>Musical Entertainment</i> ..... rockyg3495@aol.com	<b>PINEIDER, Paul</b> (14) <sup>#**</sup> ..... 817-410-3700 <i>CPA</i> ..... p.pineider@pfacpa.com
<b>BAKALO, Yuliya</b> ..... 817-908-3717 <i>Realtor</i> ..... yuliyadfw@gmail.com	<b>GUM, Rhett</b> ..... 817-602-1494 <i>Congressional Outreach</i> ..... Rhett.gum@mail.house.gov	<b>QUALLS, Laura</b> ..... 972-814-0960 <i>Travel Agent</i> ..... lqualls@dreamvacations.com
<b>BALVIN, Marvin</b> (3) <sup>#**†</sup> ..... 817-328-1144 <i>Realtor</i> ..... marvinbalvin@kw.com	<b>HAWKINS, Shawn</b> ..... 817-821-8966 <i>Computer Consulting</i> ..... Shawn@bdunn.com	<b>RAMSEY, Jan</b> (1) <sup>#</sup> ..... 817-371-1393 <i>Real Estate</i> ..... janramsey@remax.net
<b>BARKER, Alicia</b> ..... 817-673-1561 <i>Office Furniture Sales</i> ..... ahhbttb@verizon.net	<b>HEEDE, Conrad</b> (41) PDG <sup>#**</sup> ..... 817-235-8110 <i>Real Estate Mgt.</i> ..... ccheede@aol.com	<b>RECORD, Carol Ann</b> (20) <sup>#**</sup> ..... 817-488-1008 <i>Pastor</i> ..... revcarol@flash.net
<b>BARRACLOUGH, Allen</b> (15) <sup>#**</sup> ..... 817-300-9327 <i>Training - Org. Dev.</i> ..... abear727@aol.com	<b>HESEL, RaDonna</b> (14) <sup>#†</sup> ..... 817 481-1522 <i>Chamber of Commerce CEO</i> ..... RaDonna@GrapevineChamber.org	<b>REED, Helen Jean Lucas Reed</b> # ..... 817-329-4776 <i>Public Relations</i> ..... hlreed4@msn.com
<b>BASS, Jill</b> # ..... 469-814-2547 <i>Administrator/PT</i> ..... Jill.bass@baylorhealth.edu	<b>HILLMAN, Lou</b> (31) <sup>#†</sup> ..... 817-481-2573 <i>Real Estate</i> ..... Lou@BHSHLH.com	<b>RICHARDSON, Jared</b> ..... 214695-2733 <i>Sales Manager</i> ..... jbrichardson@sewell.com
<b>BELOFF III, Alex</b> (47) <sup># +</sup> ..... 817-556-1233 <i>Sales/Training</i> ..... alexbeloff@verizon.net	<b>HINTON, Deb</b> ..... 817-657-4772 <i>Retired</i> ..... mardebey@verizon.net	<b>RHODES, Teri</b> (3) <sup>#</sup> ..... 817-797-5465 <i>Realtor</i> ..... TeriRhodes@msn.com
<b>BERGES, Juneria</b> (1) <sup>#</sup> ..... 972-304-4368 <i>Non-Profit E.D.</i> ..... jbeddr@gmail.com	<b>HORAK, Curtis</b> ..... 972-302-1907 <i>Sign Co. Owner</i> ..... curt@prioritysignsandgraphics.com	<b>RODRIGUEZ, Jesse</b> ..... 817-707-7600 <i>Self-Employed</i> ..... cmredu@gmail.com
<b>BERGLUND, Bret</b> (2) <sup>#†</sup> ..... 817-455-1241 <i>Service Manager</i> ..... babgsxr@gmail.com	<b>HUFFMAN, Darrell</b> #† ..... 817-366-5271 <i>Deputy Constable</i> ..... dwh5122@msn.com	<b>RODRIGUEZ, Nadine</b> (H) ..... 817-410-3583 <i>Events Crd.</i> ..... nrodriguez@grapevintexasusa.gov
<b>BLEDSON, Juli</b> ..... 817-300-7159 <i>Residential Realtor</i> ..... juli@jubilblesoe.com	<b>HUTTON, Traci D.</b> (5) <sup>#</sup> ..... 817-442-9352 <i>Attorney</i> ..... Traci@TraciHutton.com	<b>ROSS, Christian</b> ..... 817-601-5019 <i>Product Developer</i> ..... hello@eightyninety.com
<b>BOHSALI-GOURY, Yasmine</b> (H) # ..... 817-247-9895 <i>Restaurateur</i> ..... yasmine316@hotmail.com	<b>JANICEK, Steve</b> # ..... 682-888-6506 <i>Corporate Transportation</i> ..... swjanicek@aol.com	<b>RUMBELOW, Bruno</b> (1) <sup>#†</sup> ..... 817-410-3104 <i>Municipal Admin.</i> ..... brumbelow@grapevintexas.gov
<b>BRATTON, Sheri</b> (1) ..... 817-908-9767 <i>Marketing / Admin</i> ..... Srf0001@hotmail.com	<b>JAY, Randy</b> ..... 817-798-6246 <i>Bank Lending</i> ..... randy.jay@go2fbt.com	<b>RYAN, Robin</b> (4) <sup>#†</sup> ..... 817-251-5501 <i>Superintendent</i> ..... Robin.Ryan@GCISD.net
<b>BRECHT, Jennifer</b> # ..... 817-296-8675 <i>Insurance</i> ..... jbrecht@brechtassoc.com	<b>JOHNSTON, Don</b> # ..... 682-325-5202 <i>Banking</i> ..... djohnston@premierbank.com	<b>SALAME, Eddie</b> (3) <sup>#</sup> ..... 817-410-3225 <i>Police Administration</i> ..... esalame@grapevintexas.gov
<b>BROWN, Darrell</b> ..... 817-564-3443 <i>Firefighter</i> ..... DBrown@GrapevineTexas.gov	<b>JONES, Dick</b> (E) <sup>#</sup> ..... 817-421-4617 <i>Pest Control Owner</i> ..... Djpp57@verizon.net	<b>SALAME, Margie</b> ..... 817-366-5499 <i>Realtor</i> ..... margiesalame@gmail.com
<b>BROWN, Kelly</b> # ..... 817-481-7025 <i>Chiropractor</i> ..... brownchiropracticca@gmail.com	<b>JUNGE, Marci</b> (27) <sup>#**</sup> ..... 817-366-6138 <i>Interior Designer</i> ..... mjunge@aol.com	<b>SAYERS, Merlyn</b> # ..... 817-412-5101 <i>Blood Bank Mgt.</i> ..... msayers@carterbloodcare.org
<b>BROWN, LeAnn</b> (3) <sup>#</sup> ..... 817-313-3107 <i>Real Estate</i> ..... labrown@silveroakcre.com	<b>KANE, Janice</b> # (6) ..... 817-251-5480 <i>Foundation E.D.</i> ..... Janice.kane@gcisd.net	<b>SCHAEFER, Shonda</b> # ..... 817-657-1017 <i>Non-Profit Mgt.</i> ..... sschaefer@gracegrapevine.org
<b>BROWN, Michael</b> (1) <sup>#</sup> ..... 817-874-7817 <i>Financial Advisor</i> ..... Michael.Brown@edwardjones.com	<b>KELLY, Mark Lucas</b> # (1) ..... 817-313-8288 <i>Funeral Home</i> ..... mkelly@familyowned.net	<b>SCHRIEVER, Stacy</b> #† ..... 817-707-5454 <i>Mortgage Banker</i> ..... stacylynnschriever@gmail.com
<b>BUFFINGTON, Bill</b> # ..... 214-2058-7408 <i>Video Productions</i> ..... auditvisuals@gmail.com	<b>KERCHEVAL, Kirby</b> ..... 817-328-1924 <i>Commercial Lending</i> ..... KirbyKercheval@gmail.com	<b>SCHULTZ, Kirk</b> ..... 515-250-9166 <i>Trainer</i> ..... kirkschultz@gmail.com
<b>BURRUS, Bob</b> (E) <sup>#</sup> ..... 817-223-5406 <i>Retired</i> ..... bobburrus7@gmail.com	<b>KIMBRO, Marshall</b> ..... 817-287-5616 <i>Banker</i> ..... marshall.kimbrow@legacytexas.com	<b>SCOTT, Robyn</b> #† ..... 817-488-2733 <i>Financial Advisor</i> ..... Robyn.scott@edwardjones.com
<b>CARNES, Matt</b> # ..... 817-722-8811 <i>Marketing</i> ..... matt.carnes@verizon.net	<b>LEASE, Carolyn</b> # ..... 817-501-8596 <i>Sales</i> ..... Carolyn@cavnarsmith.com	<b>SHERMAN, Judy</b> (10) <sup>#**</sup> ..... 817-366-1119 <i>Financial Advisor</i> ..... judysherman_2000@yahoo.com
<b>COPPAGE, Paul</b> (11) <sup>#†</sup> ..... 214-226-0013 <i>Real Estate</i> ..... paulcoppage@yahoo.com	<b>LUERS, Dennis</b> #* ..... 817-832-5886 <i>Real Estate</i> ..... Dennisluers@verizon.net	<b>SIBLEY, Melburn</b> (E) <sup>#**</sup> ..... 817-329-0821 <i>Pastor</i> ..... jmelburn@aol.com
<b>CORSE, Brandon</b> + ..... 817-608-6868 <i>Financial Advisor</i> ..... brandon.corse@edwardjones.com	<b>LUERS, Jan Smith</b> (2) <sup>#</sup> ..... 214-202-8700 <i>Event Planning</i> ..... rbsjss@verizon.net	<b>SIGLER, JR., E.A.</b> (E) <sup>#</sup> ..... 817-267-6426 <i>School Administrator</i> ..... esigler1@att.net
<b>COY, Chris</b> (8) <sup>#</sup> ..... 817-689-9899 <i>Corporate Finance</i> ..... chriscoydfw@gmail.com	<b>MANGRUM, Michael</b> ..... 469-989-7371 <i>Financial Advisor</i> ..... mmangrum@wradvisors.com	<b>SLECHTA, Paul</b> # ..... 817-488-4151 <i>Embroidery/Owner</i> ..... paul@pandasportswear.com
<b>COY, Traci</b> ..... 817-729-0963 <i>CPA</i> ..... traci@tracicoypca.com	<b>MATTISON, Ralph</b> # ..... 972-897-0117 <i>Winery Owner</i> ..... MattisonR@hotmail.com	<b>SMITH, Peggy</b> # (H) ..... 817-424-1699 <i>Retired</i> .....
<b>DAVIS, Ken</b> ..... 817-846-7897 <i>Automotive Sales</i> ..... Ken.Davis@Grubbs.com	<b>MCHUGH, Angela</b> ..... 817-477-7424 <i>Owner</i> ..... angelamchugh737@yahoo.com	<b>SMITH, Tim</b> PDG (3) <sup>#**</sup> ..... 405-207-1019 <i>HR: Training &amp; Dev.</i> ..... tansonsmith@gmail.com
<b>DODSON, Lee</b> # ..... 817-481-1036 <i>Dentist</i> ..... lcddd@aol.com	<b>MCNAMARA, Kevin</b> ..... 972-921-5835 <i>Restaurant Owner</i> ..... Kevin@WiseGuysTX.com	<b>STACY, Bruce</b> (2) <sup>#</sup> ..... 337-296-5475 <i>Retired</i> ..... Abs.cfs@verizon.net
<b>DORTCH, Jack</b> (39) <sup>#</sup> ..... 817-481-1421 <i>Insurance</i> ..... jdortch@farmersagent.com	<b>MEEK, Debi</b> # ..... 817-800-0804 <i>Retail Mgt.</i> ..... debimeek@hotmail.com	<b>STEWART, Roy</b> (E) <sup>#*</sup> ..... 817-481-5824 <i>Real Estate Dev.</i> ..... roy_stewart@peoplepc.com
<b>ECKMANN, Pamela</b> ..... 817-251-5962 <i>Chiropractor</i> ..... DrPamEck@yahoo.com	<b>MILLER, Tom</b> ..... 817-706-8733 <i>Owner</i> ..... tom@thelifitoffice.com	<b>TABER, Jeff</b> (3) ..... 405-203-5250 <i>Business Consultant</i> ..... jefftaber@hotmail.com
<b>FANTZ, Debra</b> ..... 817-310-3064 <i>Independent Sales Dir.</i> ..... debfantz@aol.com	<b>MILNER, Walt</b> (30) PDG <sup>#**</sup> ..... 817-283-6450 <i>Banker</i> ..... WMilner744@aol.com	<b>TATE, William "Bill"</b> #† ..... 817-488-8668 <i>Attorney</i> ..... wdteate@verizon.net
<b>FICKES, Gary</b> #† ..... 817-581-3600 <i>County Government</i> ..... gfickes650@aol.com	<b>MITCHELL, Kevin</b> # ..... 817-253-9327 <i>Parks Director</i> ..... KMitchell@grapevintexas.gov	<b>TELLIN, Mary Jo</b> ..... 817-807-3962 <i>Chamber of Commerce</i> ..... MaryJo@GrapevineChamber.org
<b>FINDLAY, Debra "Cas"</b> ..... 626-201-8105 <i>CPA</i> ..... dcfindlay@mycaponline.com	<b>MOLLET, John</b> # ..... 817-481-2559 <i>Pastor</i> ..... JohnM@FUMCG.org	<b>THOMAS, Jake</b> ..... 972-891-2504 <i>Auto Dent Removal</i> ..... Jake@Dentless.net
<b>FOLIARD, Edward</b> ..... 708-305-4721 <i>Retired Fire Chief</i> ..... EdwardFolliard@gmail.com	<b>MOWERY, Colby</b> ..... 817-565-5353 <i>Community Outreach Center Mgr.</i> ..... ColbyMowery@yahoo.com	<b>TORRES-LEPP, Amy</b> ..... 214-803-2765 <i>Title Insurance</i> ..... Amy@alamotitletexas.com
<b>FOX, Todd</b> ..... 972-835-9504 <i>Banker</i> ..... todd.fox@frostbank.com	<b>NAVARRO, Richard</b> ..... 888-505-2803 <i>Consultant</i> ..... Creativemind.nav@gmail.com	<b>VAN DYKE, Bob</b> (23) <sup>#*</sup> ..... 817-576-2323 <i>Financial Consultant</i> ..... Robert.VanDyke@Prudential.com
<b>FRANCISCO, Bill</b> (1) <sup>#</sup> ..... 817-946-7785 <i>Sales Management</i> ..... bfrancisco@att.net	<b>NEAL, Nathaniel</b> (H) ..... 817-329-9911 <i>Printing</i> ..... neal@njgdinc.com	<b>WALSH, Bill</b> (10) <sup>#</sup> ..... 817-421-0197 <i>Personnel Mgt.</i> ..... billwalshxt@verizon.net
<b>FRANK, Wayne Paul</b> (6) <sup>#*</sup> ..... 817-949-2161 <i>Attorney</i> ..... wpfatty@aol.com	<b>NEALY, Tina</b> # ..... 817-329-1668 <i>Events Planning</i> ..... weddings@paradisecovetx.com	<b>WEBSTER, Terry</b> (E) <sup>#</sup> ..... 214-706-8080 <i>Banker</i> ..... terry.webster@bbvacompass.com
<b>FRANKS, Jon Michael</b> # ..... 817-329-5573 <i>Attorney</i> ..... jonmfranks5@gmail.com	<b>NICHOLS, Morgan</b> ..... 805-368-3001 <i>Financial Advisor</i> ..... morgan.nichols@ampf.com	<b>WESTFALL, Rick</b> ..... 817-925-9063 <i>Education Administration</i> ..... Rick.Westfall@GCISD.net
<b>FREE, Elaine</b> (28) <sup>#**</sup> ..... 214-534-1760 <i>Ed. Foundation Consulting</i> ..... Elaineefree1@charter.net	<b>NIX, David</b> (H) ..... 817-975-7720 <i>Attorney</i> ..... redz28@att.net	<b>WHITE, MATTHEW</b> (H) ..... 254-368-6725 <i>School Administration</i> ..... Matthew.White@gcisd.net
<b>FREED, Darlene</b> # ..... 817-480-6434 <i>Real Estate</i> ..... Jfreed1@hotmail.com	<b>NORTON, Bill</b> ..... 817-498-9159 <i>Technical Analyst</i> ..... wnorton7@hotmail.com	<b>WHITLEY, Rob</b> # ..... 817-296-1659 <i>Commercial Cleaning</i> ..... rwhitleyent@aol.com
<b>GILLETTE, Edie</b> (E) <sup>#**</sup> ..... 817-481-5050 <i>Public Relations</i> ..... edie_gw@verizon.net	<b>O'DANIEL, Bill</b> ..... 817-310-3555 <i>Banker</i> ..... bodaniel@bnkwest.com	<b>WILBANKS, Paula</b> (H) ..... 817-223-4105 <i>Retired Teacher</i> ..... gigipw@aol.com
<b>GOBEN, Allen</b> ..... 817-515-6670 <i>College Admin.</i> ..... Allen.Goben@tccd.edu	<b>O'DELL, Duff</b> (10) <sup>#*†</sup> ..... 214-478-3750 <i>Sales/Marketing</i> ..... pdodell@verizon.net	<b>WOODS, Maybelle</b> # (H) ..... 817-481-3846 <i>Retired</i> .....
<b>GRAVES, Allan</b> # ..... 817-552-7742 <i>Attorney</i> ..... ag@all-lawfirm.com		
<b>GRAVES, Angela</b> (1) <sup>#</sup> ..... 817-553-2500 <i>Banking</i> ..... Angela.Graves@go2fbt.com		

\* Indicates a new Red Badge member (126)