

CLUB BOARD MEMBERS

3-YEAR TERMS

Janet Arthur

Paula Houston

David Brenner

Jan Levy

Corinne Cavanaugh

Kevin Medved

Michele Centanni

Connie Miller

Fedva Dikmen

Ben Wicks

JOB DESCRIPTION - BOARD MEMBER

In order to fulfill the vision and mission of the club, the board of directors must provide strong leadership for the club to maintain its position of prestige in the community – locally, nationally and internationally. Board members also take responsibility for furthering the goals of the club's strategic plan.

Knowledge

- Be aware of the major policy and fiscal issues facing the club
- Be aware of the club's governing documents, such as the Rotary International constitution and the bylaws of the Rotary Club of Seattle
- Understand the board's role in setting policy and the club manager's role in implementing it
- Be responsive to the needs and interests of the club's membership
- Represent the Rotary Club of Seattle to the Seattle community-at-large

Participation

Attend the following as much as practicable:

- Annual club leadership retreat
- Monthly board meetings
- Committee meetings on which you might be serving as a liaison
- Club's service and social events, i.e. fellowship events, district and/or international conferences, Keekwulee breakfasts, service committee activities, and the holiday luncheon

Additionally, board members are encouraged to:

- Serve as mentors to new directors
- Serve on task forces as assigned by the president or board chair
- Represent the Rotary Club of Seattle via other avenues of public service, speaking engagements, community events

Resources

Assist the club in maintaining its financial viability by:

- Proposing candidates for membership
- Providing membership feedback to the staff
- Proposing solutions to challenges that are discussed, and continuing to be involved with your proposals
- Timely contributions to the Seattle Rotary Service Foundation (SRSF) and The Rotary Foundation (TRF)
- Prompt payment of club dues and fees



NOMINATIONS 2017

CLUB BOARD MEMBERS

3-YEAR TERMS

10 candidates, vote for no more than 5



JANET ARTHUR

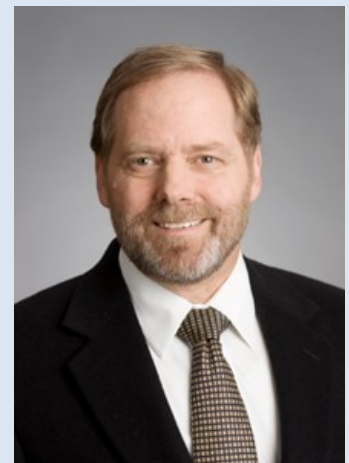
Janet joined Seattle 4 Rotary in July 2016. Ever since the first meeting, she fell in love with the mission of Rotary and Rotarians. Currently, she is serving on the Membership Recruitment and Greeters Committees.

Janet has been in the helping profession for most of her life. Her passion for helping people led her to Sound Mental Health almost a decade ago. She feels lucky to work for people and things she deeply cares about and to be able to integrate her training in psychology and her passions in life around social justice. She is committed to advocacy, charity, and philanthropy, and hopes to make an impact in her community. Her current passion is leadership. Inspired by Howard Behar, she hopes to become a servant leader. Janet would be honored to serve as a member of the Seattle #4 Rotary Board.

I joined Rotary 4 in March 2016 under the classification Law Practice – Non Profit after attending for a half dozen years under my downtown Seattle law firm's corporate membership. I serve on the Programs Committee, the International Service Committee, and the Diplomacy Task Force. The best parts of Rotary to me are the amazing speakers and the remarkable people I sit down next to each week. What a privilege to take "pot luck" seating, always meeting people new to me or learning something new! I want Rotary to be ever more intergenerational, relevant, diverse, broad-spectrum, civil and generous in spirit.

Though curiosity can kill the cat, it is my strong suit and my compelling interest in Rotary. A 30-year law practice involving corporate and nonprofit risk management may explain my survival. I recently left the law primarily to produce programs of current relevance on subjects like civil liberties, artificial intelligence and civil discourse. I am secretary to University Presbyterian's church board, incoming chair of a global health nonprofit, and provide happy emotional support to my wife Laurie (a New Testament scholar); children Emma (pediatric nurse) and Jeremy (naval aviator); my four season garden, and four very active library cards.

DAVID BRENNER





CORINNE CAVANAUGH

Corinne Cavanaugh is a digital marketing professional whose passion is helping non-profits sustain and succeed. Participating in the Group Study Exchange to Russia inspired her to become a member of Seattle Rotary just four years ago. Since then, she has engaged in *Service Above Self* on behalf of Seattle Rotary, Rotary District 5030, and Rotary International, including: leading a breakout session on social media at the Seoul, Korea International Convention, going to Ethiopia to participate in a polio NID in tandem with work to increase congressional funding for polio, actively participating as an Executive Board Member of Rotarian Malaria partners, creating a new District 5030 Social Media Committee, leading District 5030 PR initiatives to evangelize grants, and last but not least, she is the current Vice President of Membership of Seattle Rotary this year.

As VP of Membership, Corinne contributed to designing our 2020 Strategic Plan and is seeing through first-year strategies while leading membership aligned committees to achieve identified goals. Corinne is honored by the nomination and hopes to continue as a board member of Seattle Rotary in an effort to support future membership initiatives and see the 2020 Strategic Plan goals through to fruition.

Michele joined Seattle Rotary in 2016. He's been a Rotarian since 2013, serving in Milan and Rome. He currently serves on several committees, including the International Service and 2018-19 Programs Committees.

MICHELE CENTANNI

Michele is a money manager at Merrill Lynch. He was born and raised in Italy (a small town of 7,000 souls called Filottrano). He moved to Rome at age 18, and has lived in Milan, Lugano (Switzerland), Toronto and Vancouver (Canada). He worked in corporate finance and wealth management in Italy and Switzerland and will bring his international experience to the board. Michele enjoys fashion, meditation, travel, reading, and giving back whenever possible.



FEDVA DIKMEN

I joined Rotary in 1989, two years after they accepted women. I was with Emerald City Rotary club for 13 years and served on the board. I have been with Seattle 4 for the last nine years and have 100% attendance in both clubs. I served on the Fellowship Committee, International Service Committee, and the Diplomacy Task Force as well as chairing the Greeters and Rotary Cares Committees. I was the Commodore for Rotary Mariners and started Rotary Ethnic Dinners. Rotary has been a big part of my life.

I was born in Turkey and came to the US to do my graduate training at the University of Washington. My first job was starting Dikmen Travel that ended up with 70 agents for 25 years. Residential real estate is my full-time business now. More than 30 years of customer service, I believe have resulted in smooth and successful transactions.



PAULA HOUSTON, Ed.D

I joined Rotary in July 2008. I currently serve on the Peace Builders Committee, Rotary Cares Committee and Mic Handlers Committee. Previously I served on the Program Committee, where I had the honor of spearheading programs on race relations and breast cancer. I also served as club Secretary under President Laura Rehrmann. Rotary is the highlight of my week and I consider it my *moment of Zen*.

I have been an executive leader in non-profit and government health and human services for 20 years. My personal mission is to serve in leadership roles to help ensure programs and services that improve the health of communities are provided in a way focused on social justice. I currently serve on the Alzheimer's Association board and am a Commissioner on the Seattle Housing Authority board. My drive to keep communities healthy extends from my personal commitment to health and fitness. I am a 12x national and 6x world champion powerlifter and recently took up aerial arts. I live in south Seattle with my two Rhodesian Ridgebacks. I enjoy traveling and reading murder mysteries. I would be honored to serve Rotary as a board member.

When I joined Rotary in February 2013, it was to promote Rotary to Leadership Tomorrow graduates. I believed I couldn't promote the club without joining. Since then, I became "hooked" – I loved the programs, the ethic of *Service Above Self* and the great work of our members. Committee involvement has included the New Member Introductions, Programs, and Member Recruitment Committees. I've also been a Mic Handler and a "Ken Grant wannabe", serving as his substitute on occasion! As I move from full-time employment to retirement, I look forward to increasing my involvement in Seattle 4.

JAN LEVY

I was born and raised in Seattle and spent many years living elsewhere before coming home in 1980. For almost 30 years, I have served as the Executive Director of Leadership Tomorrow (LT), a civic leadership training program serving the Puget Sound region. I joined LT two years after graduating from the program, and have enjoyed watching our graduates engage in the region as elected and appointed officials, board members, and community stewards at all levels. In my free time, I enjoy travel, yoga, dance, movies, theatre and jazz. During the summer months, I can be found hiking and kayaking in the wonderful mountains of the Northwest.





KEVIN MEDVED

Kevin joined Rotary in March of 2017 inspired by all the great work Seattle 4 is accomplishing. After being introduced to the club in late 2016, he knew this club would align with his values. He is looking forward to contributing to the fellowship of the club and truly embodying *Service Above Self* as well as supporting the club with his classification in Finance.

Kevin was born into a military family and moved around the country until his father was honorably discharged and they settled in Manson, Washington. Kevin moved onto complete his undergraduate studies at Eastern Washington University in management. He and his wife, Allison, moved to Seattle to be near family in 2009 and he began his professional career in

finance. Kevin pursued fulfilling his goal of becoming a CPA in 2013 and has been practicing in business and tax consulting with local firm Peterson and Sullivan. When not reading tax updates and new accounting standards, you can find him playing basketball at the WAC or palling around Ballard with his wife where they live with their dog Bismark.



CONNIE MILLER

Jerilyn Brusseau invited me to Rotary in early 2015 and I was hooked. The accomplished and kind membership, the marvelous speakers, the opportunity to keep knowledgeable about our civic environment and to serve with others was so compelling. To date I have served on the New Member Introductions, Business Mentors and Peacebuilders Committees and participated in a number of service projects including Rotary First Harvest and a work party at the Rotary Boys and Girls Club. This year I am also on the Invocation Committee. My classification is Consulting. I look forward to serving our new president and all members.

After an early career as a professional actress and then starting a family, I transitioned to speech and communication consulting. I have had the pleasure of coaching many professionals who need to make excellent presentations. In addition, I have lots of experience in conflict management, witness preparation, group facilitation and strategic planning. My clients come from many different disciplines, industries and cultures. Through my involvement in the World Affairs Council, I have hosted about 90 international guests. I have a strong mission to support emerging women leaders and coach a number of them here and in several countries.

Ben joined Rotary in 2015 and currently serves as the Chair of the Fellowship Committee. The people who know Ben best describe him as a connector and a convener of people around big ideas. He is excited to help strengthen community within the Club, particularly between the younger and more experienced generations, and to continue to support Rotary's efforts to best address and impact the issue of human trafficking in our own community and beyond.

BEN WICKS



Ben's favorite place to be is in the mountains. He is a founding member of *Climb for Captives*, a community of friends who "do what they love to fight what they hate"...climbing mountains to raise awareness and funds to fight human trafficking. He lives in Bothell with his wife Angie and three kids and enjoys the outdoors, woodworking, and homemade ice cream. Ben is Principal at Highland Private Wealth Management, providing financial life management to business owners and current and future high net worth individuals and families. He enjoys equipping clients with clarity and courage to live fully.



NOMINATIONS 2017

CLUB OFFICERS

1-YEAR TERMS



**PRESIDENT
CINDY RUNGER**

Rotary has been a tremendous part of my life for the past dozen years. When I was new to Seattle, I asked President Paul Ishii about one place I could go to do good, make new friends, and make business connections. Paul took me to Rotary the following Wednesday and the rest is history. I've proudly served in a number of roles over the years, including SRSF President, VP of Membership, At-Large Board Director, and Keeks counselor, as well as served on the Orientation, Introduction, Nominating, and Mic Handlers Committees.

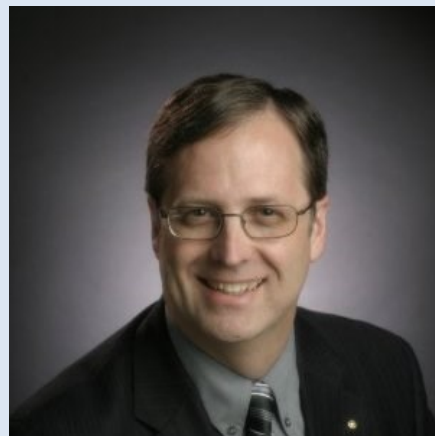
Professionally, I have had two significant, diverse careers as a Senate attorney, then a Senior Vice President/Private Banker responsible for leading teams of advisors to the wealthy. I earned my J.D. from Gonzaga University Law School and B.A. from Gonzaga University. Currently, I serve on for-profit and non-profit boards, including as a Gonzaga University Regent and Infectious Disease Research Institute (IDRI) Board Director. I live in Ballard with my awesome ten-year old son, Thor. I enjoy yoga, SUP, hiking, live artistic performances, and nerdy books and movies on sci-fi, ninjas, and dragons.

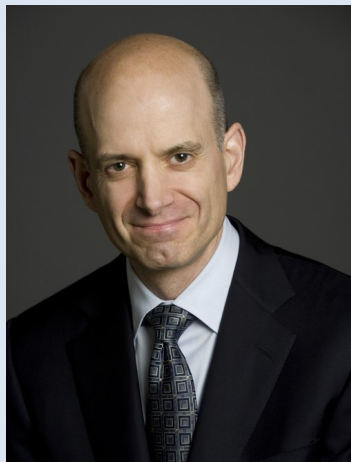
This next year will be an historic, celebratory year of impact. It would be an honor to serve as your Club President.

I joined Seattle Rotary in 2004 and early on got involved with the Education Committee, and soon joined the Arts Committee being a big fan of theater in Seattle. Subsequently I served on the Program, Invocation, and Music Committees. In recent years, I joined the International Service Committee and launched the Diplomacy Initiative which features the annual Diplomacy Day event and the Diplomacy Task Force. I became a member of the Board of Directors in 2015. It's been a joy to become part of the Rotary community and to serve together for a better world.

I was born and raised in Iran and at age 11 my family returned to the U.S. In college I settled in Seattle where I studied at UW, met my wife Ann, and we raised two daughters, Amanda (married to Ben) and Isabelle. I joined Associates in Cultural Exchange in 1983 as an ESL teacher and led the organization from 1998 to 2016. I currently am President of the American Consortium of Universities, Special Assistant for International Relations for Seattle Pacific University, and in 2016 launched David Woodward & Associates LLC to advance international goodwill through education and trade.

**BOARD CHAIR
DAVID WOODWARD**





**VP PROGRAMS
ROB LOBOSCO**

Rob joined Seattle Rotary in 2016. He was a member of Bellevue Breakfast Rotary from 2003-05. Rob is a member of the Board of Directors and serves on several committees, including International Service (Co-chair), Business Mentors, and Member Introductions (Co-chair). He hosts Rob's Table for prospective members and last year published #IAmRotary posts highlighting Rotary's diversity.

Rob is an independent management consultant. He was born and raised in and around New York City, but has lived in the Seattle area for 16 years (and counting!). Before launching his consulting practice, Rob co-founded and led an innovative software company focused on accelerating the drug development process. He sold the company to a pharmaceutical company in 2009. Rob lives on Mercer Island with his wife of 17 years, Michelle, and their 13-yr-old daughter, Mia (a ballerina!). Together they enjoy the arts, travel, reading, and giving back whenever possible.

My Rotary roles include SRSF Board Trustee and current SRSF Board Secretary, Greeter, Mic Handler, Keekwulees Counselor, and member of the Fellowship Committee. I have been a Seattle 4 member for 10 years and particularly acknowledge the service opportunities and company of other members as vital aspects of Rotary. In my role as a federal criminal prosecutor, I often see the worst side of people. Rotary reminds me of the good in the everyday world.

My time as an SRSF Trustee has deepened my understanding and appreciation of our club --truly living *Service Above Self*. I am honored to be nominated for Vice-President for Service and hope to serve President Cindy and my club colleagues well.

**VP SERVICE
SUSIE ROE**



**VP MEMBERSHIP
LIZ POWELL**

I joined Rotary in 2011 with a Public Relations classification. I joined the Sustainability and Communications Committees and advised club officers and presidents in communication and messaging strategy. I count Seattle 4 Rotarians as some of my closest friends and have enjoyed contributing as my travel schedule permitted. I recently decided to leave my corporate job to devote more time to family and club service. I will bring my energy, communication skills and connections to attract (and retain) members that strengthen our organization and mission.

I have spent most of the last 25 years in public relations agency leadership in the U.S. and abroad. For the past 18, I worked at Edelman, a global PR firm, as Executive Vice President of Consumer Brands leading a team of 50. My firm tenure allowed me to creatively serve local brands including Alaska Seafood

Marketing, California Walnuts, Microsoft, Outerwall, Trident Seafoods, Starbucks, T-Mobile and Value Village. I have served on local advisory boards including FIRST Robotics and Antioch University Seattle. My husband John and I own and operate RE/MAX On Market, a residential real estate brokerage.



SERGEANT-AT-ARMS
KEN GRANT

Arms having served five terms with Seattle 4.

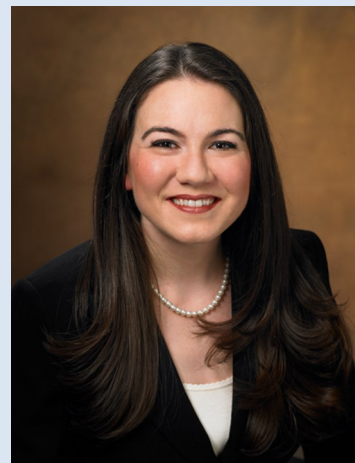
Ken's classification is Consulting—Change Management and he is a Purveyor of Remarkable Change Management with IntaGreat. He is a TEDx speaker and has served as a board member with a number of nonprofits including ArtsFund, Edmonds Center for the Arts, and the American Heart Association. Ken graduated from the Western Australian Academy of Performing Arts where he studied music.

Ken joined Rotary in 2009. He has served on the Communications, Music, Fellowship, and Mic Handlers Committees. Ken is a veteran Sergeant-at-

Jennifer joined Seattle 4 in 2015 and became an active member of the International Service Committee (ISC), serving on the grant review sub-committee within her first year. She is in her second year as Co-chair of the International Service Committee. Serving as Co-chair of the ISC has opened her eyes to the wider world of Rotary and the tremendous impact it can create. Jennifer is honored to serve as a Rotarian and to be a part of the good work worldwide.

Professionally, Jennifer is Practice Manager for the Commercial Litigation Group at Davis Wright Tremaine. She enjoys being active in the greater Seattle community and is currently serving as a Member of the Washington Athletic Club Board of Governors. Jennifer would be honored to serve as your Club Secretary.

SECRETARY
JENNIFER PORTO



TREASURER
CAROLYN HOJABOOM, CPA, MNPL

a Keeks' Counselor, SRSF Treasurer, member of the Community Service Committee, RI District 5030 Treasurer for three years, and am in my second year as Seattle 4 Club Treasurer.

I am currently the CFO of The Arc of King County. My career has primarily included consulting and audit services for 25+ years as an audit partner in a national firm and consultant in a local firm. I am committed to providing a high-level of excellence in service and expertise to the Not-for-Profit industry. I received my Masters in Not-for-Profit Leadership from Seattle University (SU), and currently serve on the School of Arts & Science Leadership Council at SU. I have served on the Charity Advisory Council to the WA SOS, and the Finance Committee of Swedish Medical Foundation. I have been an instructor, speaker and facilitator for board retreats, college classes, and AICPA & WSCPA professional seminars.

I joined the Lynnwood Rotary Club in early 90s and was a member there for about 10 years. I joined Seattle 4 in 2004. I have served as



NOMINATIONS 2017

2018—2019 PRESIDENT-ELECT



PRESIDENT-ELECT KIM MOORE

Kim Moore is an investment professional with more than 18 years of experience. She currently is a Financial Advisor with VALIC Financial Advisors (VFA) in Seattle. VFA is a wholly owned subsidiary of American Insurance Group (AIG), a global financial services and insurance company with operations in 130 countries. In addition to investment advisory services, Kim's professional practice provides financial planning services and retirement education seminars. She is a graduate of the North Carolina School of the Arts (Bachelor of Fine Arts) and of the University of California at Los Angeles (Masters of Business Administration).

Kim has served as Rotary Club Board Director (for two terms), Program Chair, Club Secretary, VP of Membership, SRSF Trustee and President of the Seattle Rotary Service Foundation (2011-2012). Her committee participation includes: Education, Prospect Table, New Member Introduction, Music, and Peacebuilders.



**Board of Trustees
Nomination Ballot
Beginning July 1, 2018**

Please review their bios before voting.

Three-Year Term; 10 Candidates; Vote for no more than 5

<input type="checkbox"/> Nancy Cahill	<input type="checkbox"/> Cynthia Chirot
<input type="checkbox"/> Margaux Kendall	<input type="checkbox"/> Virginia McKenzie
<input type="checkbox"/> Trent Mummery	<input type="checkbox"/> Eric Newman
<input type="checkbox"/> Derrick Pasternak	<input type="checkbox"/> Jeff Pritchard
<input type="checkbox"/> Lillian Sherman	<input type="checkbox"/> George Twiss

JOB DESCRIPTION – BOARD MEMBER

The SRSF Board of Trustees is a hard-working, hands-on Board. Trustees provide overall leadership, strategy, and vision as to how the Foundation's resources can be most effectively used to improve our community and our world. In addition, each trustee will actively participate in the work of at least one committee, provide strong participation in the annual fund-raising campaign, and assist with the evaluations of annual grant proposals.

Leadership

- Share in the development of the vision and strategy of the Foundation.
- Become knowledgeable of the goals of the Seattle Rotary Service Foundation.
- Understand the resources to SRSF and the opportunities to most effectively use them.
- Be knowledgeable of the activities of the Rotary Club of Seattle, especially those of the service committees, and envision how SRSF can best support their efforts.
- Recommend effective ways that the goals can be met.
- Provide timely personal contributions to Seattle Rotary Service Foundation and to The Rotary Foundation (TRF).
- Share information about the work of the Seattle Rotary Service Foundation with other members of the Rotary Club of Seattle.

Participation

- Attend as many monthly Board meetings as possible.
 - Be an active member of at least one Board committee.
 - Provide strong participation in the annual fund-raising campaign.
 - Assist with the evaluations of the annual grant proposals.
-



Nancy Cahill

I joined Seattle Rotary in January 1995 under the classification of Law: Nonprofits. My committee service has included the Rotary Boys and Girls Club, Rotary Cares, New Member introductions, Invocations and Peacebuilder Committee. I served on the Rotary Board as Vice-President of Membership. As a long-time Pinkham and Skeel member, I have watched how effectively SRSF has stewarded the funds under its responsibility and believe that my legal experience advising nonprofits will be an asset to the SRSF Board.

I have practiced law since 1984 and co-founded a 10-attorney firm in Seattle. My practice is focused on estate planning (including establishing and advising nonprofits) and real estate. I serve on the Board of Trustees for the Seattle Pacific Foundation and a founding board member of Leave 10. I am actively involved in alumni activities for Yale University, both as Past President for the Yale Association of Western Washington and as a mentor to student athletes at Yale, in appreciation for my experience as a varsity athlete at Yale. My husband and I have two daughters in college.



Cynthia Chirot

Cynthia joined Rotary as one of the original group of 15 women Rotarians admitted to the International District club in 1986. Served as ID Club President in 1990-1991. Joined Seattle 4 in 1997. Past Seattle 4 Rotary roles have included VP Service, Co-Chair of the 2004 RI Centennial grant committee and Chair of Environment and Rotary Boys and Girls Club Committees. Have served on Winners for Life scholarship selection committee for the past two years.

My career included COO roles in the corporate and nonprofit sector including at the Federal Home Loan Bank of Seattle, the Washington Women's Foundation and the American Red Cross of Western Washington, among others.

I serve on the boards of the Group Health Foundation and PeaceTrees Vietnam. I would be honored to serve on the Foundation Board, as I have seen through my work on Rotary service committees what amazing things they accomplish in our community and our world with our investment.



Margaux Kendall

Margaux enthusiastically joined Rotary in 2014. Most recently, she served as Co-Chair of the Young Rotary Leaders Committee and is now focusing her time on International Service. She was previously recruited to support SRSF by co-chairing the Fundraising Program with Lauren Domino in 2015. She is honored to be considered for board service and sees it as an opportunity to learn more from Rotary mentors like Kathy Williams about strategic philanthropy and grant-making. She would like to think she will bring useful fundraising expertise and "annoying yet thoughtful questions" to spur critical thinking (blame her desire to always be learning).

Margaux is Malaria No More's Stewardship Manager, leading the charge to foster long-lasting relationships with the donors who are at the core of MNM's mission and impact. She has more than seven years of experience in nonprofit fundraising, most recently serving as Corporate Partnerships

Officer at Museum of Flight where she helped raise gifts ranging from \$1,500-\$15M and was part of a successful campaign to raise \$77M. She holds a BA from Whitman College, a Certificate in Fundraising Management from UW, and is currently working on a Certificate in Africa and International Development from the University of Edinburgh.



Virginia McKenzie

Historically, I have built my reputation in Rotary on membership initiatives for young professionals. But starting last year with taking up the fight against sex trafficking I got hugely involved in service. Seeing the \$25k grant for Spruce Street get approved made me feel like a Rotary Hero!!! And I learned how service projects work hand in hand with engaging members. To me, Rotary service projects are an opportunity to attract new members and galvanize friendships within the club. To the SRSF board I will ensure that our service projects also serve as powerful membership development opportunities.

Virginia joined Aug 2007, founded YRL Committee, Ethiopia NID 2011, featured in Rotary Magazine Sept 2012, Board of Director 2012 – 15, Panelist at RI Convention in 2012, 2013, 2014, 2015, 2016. RI Young Professional Summit 2014, Club Sponsor & Liaison to Seattle City Rotaract, Planning Committee Zone 25/26 Young Professional Summit, Advisor to RI regarding young professional development 2015, D5030 Young Professionals Committee Chair 2015-16. Club Secretary 2016-18. D5030 Rotarian of the Year 2016.

Professionally I make my living recruiting and placing accounting professionals in their dream jobs. Recently I have taken up the fight against sex trafficking. To do this work alongside my fellow Rotarians means the world to me! For fun, I like to dance argentine tango with my wonderful husband Chris.



Trent Mummery

Trent joined Seattle 4 in 2012 and since then has been very active throughout the club. Trent served for one year on the Business Mentors Program, three years as a Keek's Counsellor, 3 years on the Rotary Relations Committee, including 1.5 years as committee Chair, and 1.5 years on the Member Engagement Committee, including 1 year as co-chair. Trent also participates in the 3rd grade Dictionary program, and is completing his third year serving on the club Board of Directors. Trent is both a Paul Harris Fellow and a member of the Pinkham and Skeel Donors.

Trent is the owner of Trent Development Inc., and has more than 30 years of experience specializing in real estate development, as well as project and construction management. His involvement in the industry includes being intimately involved in overseeing the development of more than \$600 million in real estate projects. Trent's wife of 20 years, Alexandra, is also a member at Seattle 4. They live in Magnolia with their two children, Grace, aged 10, and little Trent, aged 9.



Eric Newman

A Rotarian for 5 years, Eric serves on the International Service Committee, the Boys and Girls Club Committee, and on the Board of the Rotary Boys and Girls Club. He serves on the District 5030 Grants Team and the International Service Grants Subcommittee. He has participated in the Dictionary Delivery Program for 4 years and the Boys and Girls Club shopping event for 5 years. He has done days of service at Rotary First Harvest and the Boys and Girls Club and conducted interviews for Winners for Life. He is also a Boys and Girls Club Scholarship Mentor.

Eric is an attorney focusing his practice on civil litigation. He also serves part-time as a judge *pro tempore* with the King County District Court where he presides over civil and criminal matters. He got his undergraduate degree at the University of Washington and his J.D. at Seattle University School of Law. He is a veteran of the United States Air Force and the Washington Air National Guard. His wife is a Director with the Tukwila School District, and they have two girls. In his free time, Eric enjoys volunteering and international travel, having visited 44 countries in his life.



Derick Pasternak

Derick joined Rotary in 1987 (Albuquerque, Chicago); member of Seattle #4 1998. International Service since 1999; Co-Chair 2003-05; Arts Committee 2011-14; Rotary Relations Committee since 2015; currently Chair. District Chair, International Service, since 2015.

Derick was a Hungarian refugee in 1956. Graduated Harvard College and Medical School. Practiced internal medicine in Albuquerque; MBA, U. of New Mexico. Medical Director, then CEO, Lovelace Medical Center 1985 – 94. Private consulting, Chicago 1995 – 98. CEO, Medalia, then Providence Puget Sound Area, 1998 - 2000. Senior Consultant, Joint Commission International since 2000. Colonel, retired, US Army; active duty, Vietnam. Speak English, Hungarian, French, German, Spanish, Russian.

I envision the Foundation as the effector arm of Seattle #4 Rotarians' commitment of Service above Self. While it makes decisions about distribution of the donations, I believe it should also guide us into areas of service that are highest priority for our communities, local and global. Members of our large Club are committed to helping society in many ways. Establishing priorities as to which commitments should receive the Rotary cachet is a responsibility that SRSF should work on and promulgate. If I am elected to the Board, I hope to work on this aspect of SRSF's work.



Jeff Prichard

Jeff joined Seattle #4 in 2004 with the classification Financial Services – Trusts, serving on several committees including International Services, Programs and Education. He is a Paul Harris Fellow and currently serves on the Board and as Treasurer of Rotarian Malaria Partners. While working in Tacoma between 2009-2013, Jeff transferred his Rotary membership to Tacoma #8 and chaired their Program Committee for 3 years. His daughter, a 4th generation Rotarian, is President-elect of the Metro New York City Rotary Club. Jeff hopes to assist SRSF in looking at innovative ways to address community needs.

After 25 years in Financial Management, culminating as Senior VP with US Bank, Jeff transitioned to the non-profit arena as Director of Philanthropy for the Greater Tacoma Community Foundation, launching the organization's social impact investing and a Pierce County wealth transfer initiative. Most recently Jeff served as Capital Campaign Director with Bloodworks Northwest. Volunteer service includes Board Chair of the Bainbridge Community Foundation, USC Alumni Board of Governors, Helmets for Youth Foundation founder, and Board member of YMCA's Camping Services. Jeff holds an MBA, is a CFP as well as a *Chartered Advisor in Philanthropy*.



Lillian Sherman

Lillian joined Rotary in 2011 after spending the previous 5 years getting to know the club while working with Wellspring Family Services on the Centennial campaign that raised more than \$4m for the Rotary Support Center for Families. After experiencing the generosity of Seattle #4 first hand, it was impossible not to want to stay involved. She joined the Community Service Committee, eventually co-chairing it for two years and is a greeter and a microphone handler. Throughout my career I have been on all sides of the work that SRSF is charged with - grant writer, grant maker and fundraiser - and look forward to engaging with Rotarians to deepen our commitment to this community.

Lillian has been the Executive Director at the Pike Place Market Foundation since 2012 and just completed a \$9m community campaign to expand the Market. Prior to the Market, she spent 13 years leading the fundraising and community relations efforts at Wellspring Family Services and FareStart. Both organizations went through significant growth periods during her tenure including major capital campaigns. She earned a BA in Political Science & Social Work at SPU and holds an MPA from Seattle University.



George Twiss

George joined Seattle Rotary in 1970. Formerly a member of Worcester (MA) Rotary. Classification: Foundations- formerly Business Development Management Committees: New Member Introduction, Invocation - formerly Rotary Boys & Girls Club (9 years), Fellowship; Classification, Membership, Youth and Schools Serving Seattle Rotary and its mission through the Foundation, it would be an honor to bring my experience with the corporate and nonprofit sectors including foundation leadership.

George is currently the Executive Director of the Transforming Age Foundation. He has wide-ranging experience in both the corporate (Xerox, Prodigy, Seattle Film Works) and nonprofit (Northwest Center, U of Phoenix, Senior Services) sectors. He has served on the boards of the UW Foster School, Rotary Boys & Girls Club, SPU Business School, Senior Services, and Mary, Queen of Peace Church. Originally from Boston, George holds a bachelor's degree in English from Stonehill College and an MBA from Clark University.
