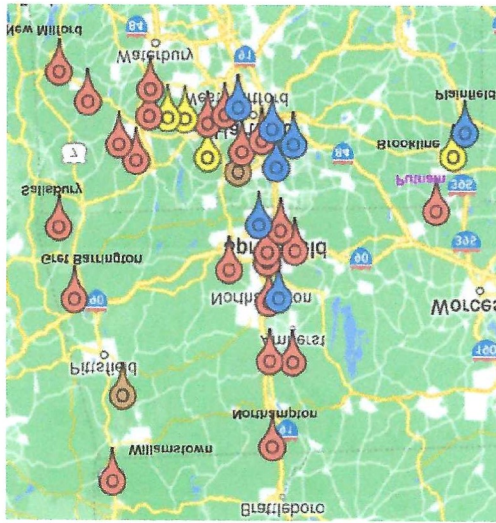


ROTARY 101

Information for new members

“Whatever Rotary may mean to us, to the world it will be known by the results it achieves.”

Paul Harris, Founder of Rotary organization.



Rotary District 7890 (56 Clubs)

What's Rotary?

Rotary started with the vision of one man — Paul Harris. The Chicago attorney formed the Rotary Club of Chicago on 23 February 1905, so professionals with diverse backgrounds could exchange ideas and form meaningful, lifelong friendships. The name ROTARY came from the group's early custom of rotating meeting locations among the offices of its members. Only 16 years after being founded, Rotary had clubs on six continents.

Over time, Rotary's reach and vision gradually extended to humanitarian service as Rotarians began to use their gifts to benefit their community. Members have a long track record of addressing challenges in their communities and around the world. For more than 117 years, Rotary members have been addressing challenges with compassion, ingenuity, integrity and determination.

Who we are

Rotary is a global network of 1.2 million neighbors, friends, leaders, and problem-solvers who see a world where people unite and take action to create lasting change – across the globe, in our communities, and in ourselves.

Solving real problems takes real commitment and vision. For more than 11 years, Rotary's people of action have used their passion, energy, and intelligence to take action on sustainable projects. From literacy and peace to water and health, we are always working to better our world, and we stay committed to the end.

What we do

The work of Rotary begins in the community, and every community has its own unique needs and concerns. While we serve in countless ways, we've focused our efforts in nine key areas to maximize our impact. These areas encompass some of the world's most critical and widespread humanitarian needs:

- | | |
|---|-----------------------------------|
| 1. Peace building and conflict prevention | 6. Community economic development |
| 2. Disease prevention and treatment | 7. Supporting the environment |
| 3. Water, sanitation and hygiene | 8. Disaster response |
| 4. Maternal and child health | 9. Eradicating polio |
| 5. Basic education and literacy | |

Our mission

We provide service to others, promote integrity, and advance world understanding, goodwill, and peace through our fellowship of business, professional, and community leaders.

Vision statement

Together, we see a world where people unite and take action to create lasting change — across the globe, in our communities, and in ourselves.

We work differently

We see differently: Our multidisciplinary perspective helps us see challenges in unique ways.

We think differently: We apply leadership and expertise to social issues — and find unique solutions.

We act responsibly: Our passion and perseverance create lasting change.

Diversity, Equity, and Inclusion

As a global network that strives to build a world where people unite and take action to create lasting change, Rotary values diversity and celebrates the contributions of people of all backgrounds, regardless of their age, ethnicity, race, color, abilities, religion, socioeconomic status, culture, sex, sexual orientation, and gender identity.

Rotary's Guiding Principles

Object of Rotary

The object of Rotary is to encourage and foster the ideal of service as a basis of worthy enterprise and, in particular, to encourage and foster:

- **FIRST** – The development of acquaintances as an opportunity for service;
- **SECOND** – High ethical standards in business and professions; the recognition of the worthiness of all useful occupations, and the dignifying of each Rotarian's occupation as an opportunity to be of service to ;
- **THIRD**- The application of the ideal of service in each Rotarian's personal, business and community life; and
- **FOURTH** – The advancement of international understanding, goodwill, and peace through a world fellowship of business and professional persons united in the ideal of service.

Motto of Rotary

Service Above Self

The Four-Way Test

The Four-Way Test is a nonpartisan and nonsectarian ethical guide for Rotarians to use for their personal and professional relationships. The test has been translated into more than 100 languages, and all Rotarians, worldwide, recite it at club meetings:

1. Is it the **TRUTH**?
2. Is it **FAIR** to all concerned?
3. Will it build **GOODWILL** and **BETTER FRIENDSHIPS**?
4. Will it be **BENEFICIAL** to all concerned?

Avenues of Service

We channel our commitment to service at home and abroad through five Avenues of Service, which are the foundation of club activity.

- **Club service** focuses on making clubs strong. A thriving club is anchored by strong relationships and an active membership.
- **Vocational service** calls on every Rotarian to work with integrity and contribute their expertise to the problems and needs of society.
- **Community service** encourages every Rotarian to find ways to improve the quality of life for people in his or her community and to serve the public interest.
- **International service** exemplifies our global reach in promoting peace and understanding. We support this service avenue by sponsoring or volunteering on international projects, seeking partners abroad, student exchanges, etc...
- **Youth service** recognizes the importance of empowering youth and young professionals through leadership development.

Rotary's Strategic Plan

More than a century ago, we pioneered a new model of service leadership grounded in person-to-person connections. Today, those connections are a network that spans the globe—bridging cultural, linguistic, generational, and geographic barriers—and shares the vision of a better world.

As People of Action, we understand that fulfilling that vision requires a plan.

This is Rotary's plan for the next five years:

- **Increase our impact** by seeking out new ways to translate our expertise into making a difference in our communities and across the globe
- **Expand our reach** by building connections and opportunities that will allow people who share our drive to do the same.
- **Enhance participant engagement** by recommitting to putting the needs, expectations, and growth of our participants at the center of all we do, and
- **Increase our ability to adapt** by stay true to ourselves and stay ahead of change in our next 117 years.

By helping to realize the goals of this plan, you ensure a stronger and even more effective future for Rotary—a tremendous legacy. Our plan is rooted in our tried-and-true values and builds on the remarkable capabilities and spirit of Rotarians.

It is clear-eyed about the challenges that Rotary and the world face. It protects the value of human connection in an age of technology. It lays out a path for bringing great ideas to the forefront of the global imagination of what's possible.

And our plan will provide us with a continuity of vision from year to year, keeping us moving toward fulfilling our shared purpose.

How we are organized

Rotary is made up of three parts: our clubs, Rotary International, and The Rotary Foundation. The headquarters of Rotary and The Rotary Foundation are in Evanston, Illinois, just outside of Chicago. From this location, they provide the governing structure and guiding principles for its member clubs.

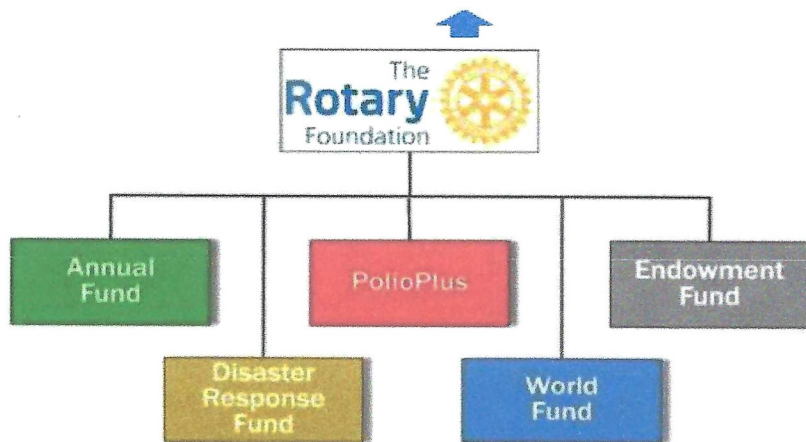
Rotary International / The Rotary Foundation



545 Districts
(for training, oversight & resource allocation)



36,360+ Rotary Clubs / 11,000+ Rotaract Clubs
(for service, fellowship & networking)



1.2 Million Individual Members

Rotary International

Rotary International is governed by a board of directors composed of the international president, the president-elect, the general secretary, and 17 zone directors. The nomination and the election of each president is handled in the one- to three-year period before he or she takes office, and is based on requirements including geographical balance among Rotary zones and previous service as a district governor and board member. The international board meets quarterly to establish policies and make recommendations to the overall governing bodies, the RI Convention and the RI Council on Legislation.

The Rotary Foundation

The Rotary Foundation is the philanthropic arm of Rotary (a 501c3 charitable corporation) that supports the efforts to advance world understanding, goodwill, and peace through the improvement of health, the support of education, and the alleviation of poverty.

At the 1917 Rotary International convention, outgoing Rotary president Arch Klumph proposed setting up an endowment "for the purpose of doing good in the world." That one idea, and an initial contribution of \$26.50, set in motion a powerful force that has transformed millions of lives around the globe.

The Rotary Foundation is supported solely by voluntary contributions from Rotarians and friends of the Foundation who share its vision. Each Rotarian is asked to contribute at least \$25 per year to the Annual Fund.

Over the last 117 years, the Foundation has spent in excess of \$5 billion on life-changing, sustainable humanitarian programs. This includes spearheading the movement to eradicate polio across the world, as well as facilitating projects which address Rotary's seven areas of focus and two causes.

Annual Fund

The Annual Fund is Rotary's checkbook. It is the primary source of funds that support

The Rotary Foundation's day-to-day programs. Contributions to the fund are invested for three years and then 50% of them are returned to the District for local decision making about how they will be spent; options range from humanitarian projects (including service travel and disaster recovery efforts), to scholarships (for any level, length of time, location, or area of study) and youth programs (including Rotary Youth Exchange, RYLA, Rotaract, Interact).

PolioPlus

The Rotary Foundation's signature program is the eradication of polio, a paralyzing and potentially deadly infectious disease that most commonly affects children under the age of 5. The virus spreads from person to person, typically through contaminated water. It can then attack the nervous system.

As a founding partner of the Global Polio Eradication Initiative, Rotary has helped reduce polio cases by 99.9 percent since our first project to vaccinate children in the Philippines in 1979. Rotary members have contributed more than \$2.1 billion and countless volunteer hours to protect nearly 3 billion children in 122 countries from this paralyzing disease. In 2017 alone, 430 million children were vaccinated in 39 countries. Rotary's advocacy efforts have played a crucial role in decisions by governments to contribute more than \$10 billion to the effort

Today, polio remains endemic only in Afghanistan and Pakistan. But it's crucial to continue working to keep other countries polio-free. If all eradication efforts stopped today, within 10 years, polio could paralyze as many as 200,000 children each year.

As of November 10, there have been 9 cases in 2023.

Endowment Fund

Contributions to the Endowment Fund are invested in perpetuity and investment earnings are used to provide a permanent and sustainable source of funding to support Foundation programs.

Disaster Response Fund

The Disaster Response Fund provides grants to districts looking to support relief and recovery efforts in areas that have been affected by natural disasters within the past six months. Funds can be used to provide basic items such as water, food, medicine, and clothing. Districts are responsible for identifying the needs in the communities affected and determining how funding could best meet their needs

World Fund

The World Fund provides the necessary funding for our highest priority activities around the globe – large international humanitarian projects that have sustainable, measurable outcomes in Rotary's areas of focus (global grants), graduate level scholarships and training Peace Fellows.

Transparency and Stewardship

It's an organization you can support with confidence.

Charity Navigator has named The Rotary Foundation a Four-Star Charity with a perfect

100-point overall score for each of the past 14 years - less than 1 percent of the charities it rates have earned a perfect score.

The Rotary Foundation was named the World's Outstanding Foundation by the Association of Fundraising Professionals.

Our Foundation annually dedicates about **91%** of its total spending to program awards (**85%**) and operations (**6%**), far exceeding the efficiency standards set by independent charity-rating services.

PolioPlus	42%	Fund Development	6%
Global Grants	27%	General Administration	3%
District Grants	9%		
Program Operations	6%		
Other Grants	4%		
Disaster Response	2%		
Peace Centers	1%		

Rotary District 7890

Your Rotary club is part of District 7890 which covers Northern Connecticut and the Western Massachusetts.

The story of Rotary in Connecticut parallels the story of the entire Rotary movement which had begun when Chicago attorney Paul Harris invited a few friends to meet him after work February 23, 1905. On December 6, 1905 Richard Northrop Sr. V.P. from Travelers, held the first organizational meeting in Hartford. On July 24, 1911 Hartford Rotary Club received club charter from the National Association of Rotary Clubs (now known as Rotary International) and the Rotary was born in Connecticut.

The District is led by a District Governor who serves a single, one-year term. The District Governor works with his or her Assistant Governors and the District Staff to provide support to the 56 Clubs and 1,700+ Rotarians in District 7890.

Our 2023-24 District Governor is **Christine Burns** of the Rotary Club of Holyoke, MA.

Our 2024-25 District Governor-elect is **Vin Marinaro** of the Rotary Club of Pittsfield, MA

Our 2025-26 District Governor-Nominee is April Beston of the Rotary Club of Ludlow, MA

The District website: www.rotarydistrict7890.org

Your Rotary Club

The Rotary Club is the basic unit of Rotary, and each club determines its own membership. Clubs originally were limited to a single club per city, municipality, or town, but Rotary International encourages the formation of one or more additional clubs in the largest cities when practical. Most clubs meet weekly, usually at a mealtime on a weekday in a regular location, when Rotarians can discuss club business and hear from guest speakers. Each club also conducts various service projects within its local community, and participates in special projects involving other clubs in the local district, and occasionally, a project in another nation. Most clubs also hold social events at least

quarterly and, in some cases, more often.

Each club elects its own president and officers among its active members for a one-year term. The clubs enjoy considerable autonomy within the framework of the standard constitution and the constitution and bylaws of Rotary International. The governing body of the club is the Club Board, usually consisting of the club president, vice president, president-elect, secretary, treasurer, and several Club Board directors. The president usually appoints the directors to serve as chairs of the major club committees, including those responsible for club service, vocational service, community service, youth service, and international service.

Rotarians may attend any Rotary club around the world at one of their weekly meetings.

Rotary International Programs

Youth Exchange

Rotary Youth Exchange builds peace one young person at a time. Students learn a new language, discover another culture, and truly become global citizens. Exchanges for students ages 15-19 are sponsored by Rotary clubs in more than 201 countries and territories like Hong Kong, Bermuda, Palestine. Long-term exchanges last a full academic year, and students attend local schools and live with multiple host families. Short-term exchanges last from several days to three months and are often structured as camps, tours, or homestays that take place when school is not in session.

Interact

Interact clubs bring together young people ages 12-18 to develop leadership skills while discovering the power of Service Above Self. The program shows middle school and high school students that serious leadership can be seriously fun. Interact clubs organize at least two projects every year, one that helps their school or community and one that promotes international understanding. Rotary club sponsors mentor and guide Interactors as they carry out projects and develop leadership skills.

Rotaract

Rotaract clubs bring together people ages 18 and older to exchange ideas with leaders in the community, develop leadership and professional skills, and have fun through service. In communities worldwide, Rotary and Rotaract members work side by side to take action through service. From big cities to rural villages, Rotaract is changing communities like yours. Rotaract members decide how to organize and run their clubs, manage their own funds, and plan and carry out activities and service projects. Rotary club sponsors offer guidance and support and work with your club as partners in service.

Rotary Youth Leadership Awards

Rotary Youth Leadership Awards (RYLA) is an intensive leadership experience organized by Rotary clubs and districts where Rotary help high school juniors and seniors hone their leadership potential while having fun and making connections. District 7890 operates a one-day leadership camp *at the Springfield College Campus*, each June. Events include presentations, activities, and workshops covering a variety of topics.

Rotary Foundation Programs

District Grants

District grants fund small-scale, short-term activities that address needs in your community and communities abroad. Each district chooses which activities it will fund with these grants. Options range from humanitarian projects (including service travel and disaster recovery efforts) to scholarships (for any level, length of time, location, or area of study) and youth programs (including Rotary Youth Exchange, RYLA, Rotaract, Interact).

Global Grants

Global grants support large international activities with sustainable, measurable outcomes in Rotary's areas of focus. By working together to respond to real community needs, clubs and districts strengthen their global partnerships. There are three types of global grants - **Humanitarian projects, Scholarships for graduate-level academic studies, and Vocational Training Teams**, which are groups of professionals who travel abroad either to teach local professionals about their field or to learn more about it themselves.

Disaster Response Grants

Disaster response grants support relief and recovery efforts in areas that have been affected by natural disasters within the past six months. Funds can be used to provide basic items such as water, food, medicine, and clothing. Districts are responsible for identifying the needs in the communities affected and determining how funding could best meet their needs.

Rotary Peace Centers/Fellowships

Each year, The Rotary Foundation awards up to 50 fellowships for master's degrees and 80 for certificate studies at premier universities. The Rotary Peace Fellowship is designed for leaders with work experience in peace and development. Our fellows are committed to community and international service and the pursuit of peace. Each year,

Through academic training, practice, and global networking opportunities, the Rotary Peace Centers program develops the capacity of peace and development professionals or practitioners to become experienced and effective catalysts for peace. The fellowships cover tuition and fees, room and board, round-trip transportation, and all internship and field-study expenses.

Rotary Foundation Recognition

Your generous contributions to The Rotary Foundation are essential to securing and growing Rotary programs throughout the world. We recognize donors to express our gratitude for your commitment, offering individual and club recognition as well as naming opportunities that enable you to honor a friend or family member with a named or endowed gift.

Benefactor

When you include the Endowment Fund as a beneficiary of \$1,000 or more in your estate plans or when you donate \$1,000 or more to the fund outright. Benefactors receive a

certificate and insignia to wear with a Rotary or Paul Harris Fellow pin.

Paul Harris Fellow

When you give \$1,000 or more, either one-time or cumulatively, to the Annual Fund, PolioPlus, or an approved Foundation grant. To recognize someone else as a Paul Harris Fellow, you can give that amount in their name.

Multiple Paul Harris Fellow

When you give additional gifts of \$1,000 or more to the Annual Fund, PolioPlus, or an approved Foundation grant.

Sustaining Member

When you give \$100 or more annually to the Annual Fund.

Paul Harris Society Member

When giving \$1,000 or more annually to the Annual Fund, PolioPlus, or an approved Foundation grant.

Major Donor

When your cumulative donations reach \$10,000. Major Donors can choose to receive a crystal recognition piece and a Major Donor lapel pin and/or pendant. Name recognition is not automatic and needs to be reported to RI staff.

- Level 1: \$10,000 to \$24,999
- Level 2: \$25,000 to \$49,999
- Level 3: \$50,000 to \$99,999
- Level 4: \$100,000 to \$249,999

Bequest Society

When you make a commitment for future gifts of \$10,000 or more to The Rotary Foundation, you'll be invited to join the Bequest Society. Recognition items are commemorate giving at these levels:

- Level 1: \$10,000 to \$24,999
Bequest Society pin and an exclusive art piece suitable for framing
- Level 2: \$25,000 to \$49,999
Rotary's Promise crystal and named endowed fund, plus all of the above
- Level 3: \$50,000 to \$99,999
Separate named endowed funds directed to two areas of focus or districts, plus all of the above
- Level 4: \$100,000 to \$249,999
Customized Rotary's Promise crystal, plus all of the above
- Level 5: \$250,000 to \$499,999
Posthumous induction into the Arch Klumph Society, plus all of the above
- Level 6: \$500,000 to \$999,999
Special seating and registration benefits at the Rotary International Convention, plus all of the above

Arch Klumph Society

When your cumulative donations reach \$250,000. Recognition includes an induction ceremony and your picture and biography in the Arch Klumph Society interactive gallery at the Rotary International headquarters in Evanston. You also receive invitations to society events, along with membership pins and crystals that commemorate giving at the following levels.

- Trustees Circle: \$250,000 to \$499,999
- Chair's Circle: \$500,000 to \$999,999
- Foundation Circle: \$1,000,000 to \$2,499,999
- Platinum Trustees Circle: \$2,500,000 to \$4,999,999
- Platinum Chair's Circle: \$5,000,000 to \$9,999,999
- Platinum Foundation Circle: \$10,000,000 and above

Legacy Society

When you promise a gift of \$1 million or more to the Endowment, you'll be listed in Rotary's annual report and invited to exclusive Rotary International and Foundation events. Legacy Society members also receive special recognition items and all the benefits provided to Bequest Society members.