



Rotary Club Of Perrysburg

New Member Induction

2018-19

Rotary History and Strategic Plan

What is Rotary?

- Together, we see a world where people unite and take action to create lasting change – across the globe, in our communities, and in ourselves.
- We are 1.2 million neighbors, friends, and community leaders who come together to create positive, lasting change in our communities and around the world.
- More than 35,000 Clubs in over 200 countries
- Organized into 530 Districts each led by a District Governor

- Our distinct point of view and approach gives us unique advantages:
 - We see differently: Our multidisciplinary perspective helps us see challenges in unique ways.
 - We think differently: We apply leadership and expertise to social issues—and find unique solutions.
 - We act responsibly: Our passion and perseverance create lasting change.
 - We make a difference at home and around the world: Our members can be found in your community and across the globe.

How Do We Work?

- Our impact starts with our members—people who work tirelessly with their clubs to solve some of our communities' toughest challenges.
- Their efforts are supported by Rotary International and The Rotary Foundation, which turns generous donations into grants that fund the work of our members and partners around the world.
- Rotary is led by our members—responsible leaders who help to carry forward our organization's mission and values in their elected roles.

How Did We Get Here?

- We've been making history and bringing our world closer together for over 100 years.
- Since forming in 1905, we've taken on some of the world's toughest challenges and helped a wide range of international and service organizations—from the UN to Easter Seals—get started.

- Our 1.2 million-member organization started with the vision of one person—Paul P. Harris.
- The Chicago attorney formed one of the world's first service organizations, the Rotary Club of Chicago, on 23 February 1905 as a place where professionals with diverse backgrounds could exchange ideas and form meaningful, lifelong friendships.
- Rotary's name came from the group's early practice of rotating meetings among the offices of each member.

- Of the things we think, say or do
 - Is it the TRUTH?
 - Is it FAIR to all concerned?
 - Will it build GOODWILL and BETTER FRIENDSHIPS?
 - Will it be BENEFICIAL to all concerned?
- The Four Way Test is our ethical code and is repeated to end each of our meetings.

- The Object of Rotary is to encourage and foster the ideal of service as a basis of worthy enterprise and, in particular, to encourage and foster:
 - FIRST: The development of acquaintance as an opportunity for service;
 - SECOND: High ethical standards in business and professions; the recognition of the worthiness of all useful occupations; and the dignifying of each Rotarian's occupation as an opportunity to serve society;
 - THIRD: The application of the ideal of service in each Rotarian's personal, business, and community life;
 - FOURTH: The advancement of international understanding, goodwill, and peace through a world fellowship of business and professional persons united in the ideal of service.

Avenues of Service

- **Club Service** focuses on making clubs strong, building strong relationships and an active membership development plan.
- **Vocational Service** calls on every Rotarian to work with integrity and contribute their expertise to the problems and needs of society.
- **Community Service** encourages every Rotarian to find ways to improve the quality of life in their communities and to serve the public interest.
- **International Service** exemplifies our global reach in promoting peace and understanding by sponsoring or volunteering on international projects, seeking partners abroad, and more.
- **Youth Service** recognizes the importance of empowering youth through leadership development programs such as Interact, Rotary Youth Exchange and our STRIVE Program (Students Taking a Renewed Interest in the Value of Education).

Strategic Plan



Strategic Plan

The goals for **Support and Strengthen Clubs** are:

- Foster club innovation and flexibility
- Encourage clubs to participate in a variety of service activities
- Promote membership diversity
- Improve member recruitment and retention
- Develop leaders
- Start new clubs
- Encourage strategic planning at club and district levels

The goals for **Focus and Increase Humanitarian Service** are:

- Eradicate polio
- Increase sustainable service focused on
 - New Generations programs
 - Rotary's six areas of focus
- Increase collaboration and connection with other organizations
- Create significant projects both locally and internationally

The goals for **Enhance Public Image and Awareness** are:

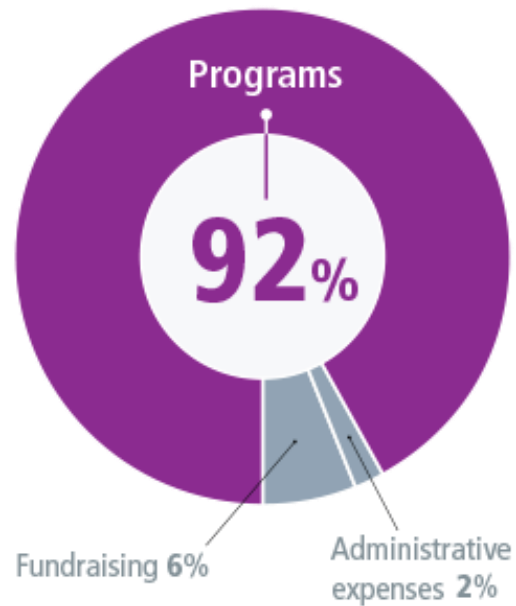
- Unify image and brand awareness
- Publicize action-oriented service
- Promote core values
- Emphasize vocational service
- Encourage clubs to promote their networking opportunities and signature activities

www.rotary.org/strategicplan

The Rotary Foundation of Rotary International

- The Rotary Foundation was created in 1917 and dedicated to “doing good in the world.”
- Today, The Rotary Foundation helps clubs and districts work together to perform meaningful, sustainable service.
- Our top-rated, award-winning Foundation has spent more than **\$3.7 billion** on life-changing, sustainable projects that help people in need around the world get clean water, medical care, literacy classes, and other essentials.

THE ROTARY FOUNDATION'S EXPENDITURES WENT TO ...



Rotary Foundation Areas of Focus



Peace and conflict prevention/resolution



Disease prevention and treatment



Water and sanitation



Maternal and child health



Basic education and literacy



Economic and community development

- **Giving a community the skills and knowledge to maintain project outcomes for the long term, after grant funds have been expended.**

Rotary's contributions to the global polio eradication effort now exceed **\$1.6 billion**, including matching funds from the Gates Foundation. Hundreds of thousands of volunteers have supported National Immunization Days.

Since 1988, **more than 2 billion children** have received polio vaccine, and we've achieved a 99.9% reduction in polio cases. It may be considered the greatest humanitarian service the world has ever seen, and every Rotarian can take pride in the achievement.

- Global Grants
 - Water Projects in Haiti, Sri Lanka
 - Midwife Education in Mongolia
 - School bathrooms and classroom furniture in India
 - Student Education in Belize
- District Matching Grants
 - Building Renovations for the Deborah House
 - Timisoara, Romania

Our Annual Ask

- Contributions to The Rotary Foundation are essential to growing Rotary programs throughout the world.
- Each Rotarian is asked to contribute at least \$100 per year to The Rotary Foundation to become a Sustaining Member.
- Rotary Direct is a great way to give monthly, quarterly, or annually. Enroll online: www.rotary.org/give
- Members may also add \$125 to their annual dues statement and the club will transfer the funds for you by directing \$100 to the Annual Fund and \$25 to Polio Eradication

Recognition

- Paul Harris Fellow, when you give \$1,000 or more to the Annual Fund, PolioPlus, or an approved Foundation grant.
- To recognize someone else as a Paul Harris Fellow, you can give that amount in their name. You are recognized as a Multiple Paul Harris Fellow with each additional gift of \$1,000.
- Paul Harris Society member, when you give \$1,000 or more annually to the Annual Fund, PolioPlus, or an approved Foundation grant.

Obligations of Rotarians

- Grow
 - Membership is everyone's responsibility
 - Look for colleagues and neighbors to join or work
 - Service is everyone's responsibility
 - Propose grants and causes to support with time and money
 - Suggest your own service project for the club membership to engage!

- Serve
 - Serve on a club committee in an area of interest
 - Participate on an event committee for a fund-raiser
 - Dig into an on-going or event-based service project
 - Agency service days
 - Serve with Rotarians at a food kitchen or PCU Food Pantry
 - STRIVE Program (Students Taking a Renewed Interest in the Value of Education)
 - Interact Program Mentor
 - Monthly Meal Deliveries

- \$45 one-time initiation fee
- Two options, payments due annually by June 15
 - Prepaid Option \$900
 - Covers all weekly meals
 - Covers dues to Rotary International, District 6600, and Club
 - Covers Annual Holiday Party and Charter Night celebration for you and a guest
 - “Pay-as-you-go” \$500
 - Covers dues to Rotary International, District 6600, and Club
 - Covers Annual Holiday Party and Charter Night celebration for you and a guest
 - Lunch fee of \$15 is payable by cash, credit card, or check each week

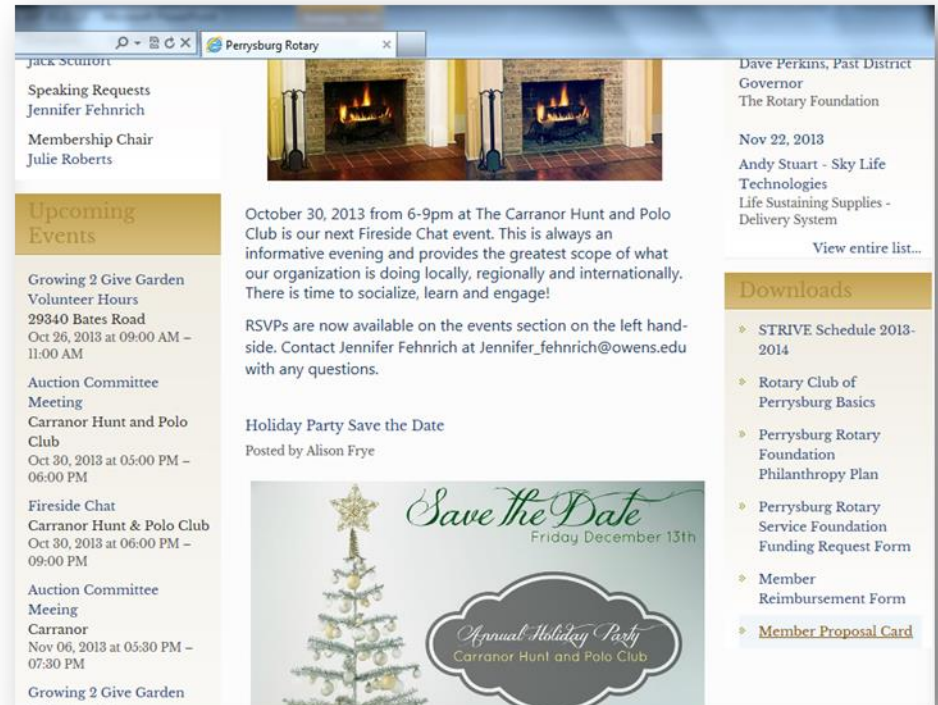
- Thirty total credits are required each Rotary Year
 - Twelve must include attendance at a regularly scheduled Perrysburg Rotary luncheon meeting.
- The following items meet the standard for an engagement credit:
 - Any Rotary District 6600 or Rotary International sponsored meeting, event or activity
 - Any Perrysburg Rotary sponsored activity:
 - Monthly fellowship events, Rotary After Hours
 - Annual Holiday Party and Annual Charter Night celebration
 - Club committee/board meeting.
 - Club service project
 - Perrysburg Rotary Service Foundation Trustees meeting

- Any other Rotary Club's regular meeting, often referred to as a "make-up." Visit <https://my.rotary.org/en/search/club-finder> to look up another club and its meeting time.
- Any online Rotary Club meeting such as Rotary District 6600 Ohio Pathways E-Club at <http://www.rotaryclub6600.org>. Other E-Clubs may be found at the link above.
- Other activities as may be designated by the board of directors and published to the membership.

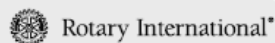
Email ashley.lopez@perrysburgrotary.org if you wish to have a Rotary activity sponsored by another club applied as attendance credit.

New Member Proposals

- We are always looking for **QUALITY** members
- Download **Member Proposal Card** from website
- Turn in to **Secretary** for board consideration
- **Membership Chair** navigates process for prospective member



Completing the Form



Important Reminder

Before you submit your proposal, have you...

- ☐ Given copies of *Rotary Basics*, *This Is Rotary*, and *What's Rotary?* to the prospective member?
- ☐ Provided the prospective member with information about membership benefits and responsibilities?
- ☐ Encouraged the prospective member to tour the RI Web site, www.rotary.org?
- ☐ Presented your club's projects and programs to the prospective member?
- ☐ Completed and signed Part A of the Membership Proposal Form?

How to Propose a New Member

Proposing new members is essential to achieving Rotary's goals of providing community and international service. As a Rotarian, one of your primary responsibilities is to help identify and propose new members.

Contribute to your club's membership by bringing in qualified business and professional leaders who are interested in and committed to advancing the mission of Rotary. Together with your fellow Rotarians, you can help your club fully represent your community's business and professional life.

Use the form inside to propose a new member. You'll be strengthening your club and ensuring its growth and longevity.

Do it today!



Rotary International
One Rotary Center
1560 Sherman Avenue
Evanston, IL 60201-3698 USA
www.rotary.org

254-EN—(1205)

Membership Proposal Form

Part A (to be completed by proposer and returned to the club secretary)

I propose:

Title (e.g., Mr., Ms., Mrs., Dr., Rev.): _____ Suffix (e.g., Jr., Sr., III): _____

Family name: _____

First name: _____ Middle name: _____

Current (or former) firm and position: _____

Telephone (including country/city or area codes) _____ Fax (including country/city or area codes) _____

Residence: _____

Business: _____

Cellular/Other: _____

Preferred e-mail address: ☐ Residence ☐ Business _____

Membership type (check one): ☐ Active ☐ Honorary

If active, proposed classification: _____

If a transferring or former Rotarian, list previous club information:

Name: _____ Name: _____

Dates: _____ To _____ Dates: _____ To _____

Recent transfer (one year or less): ☐ Yes ☐ No

If an RI program participant or Foundation alumnus/a, list program(s) and date(s):

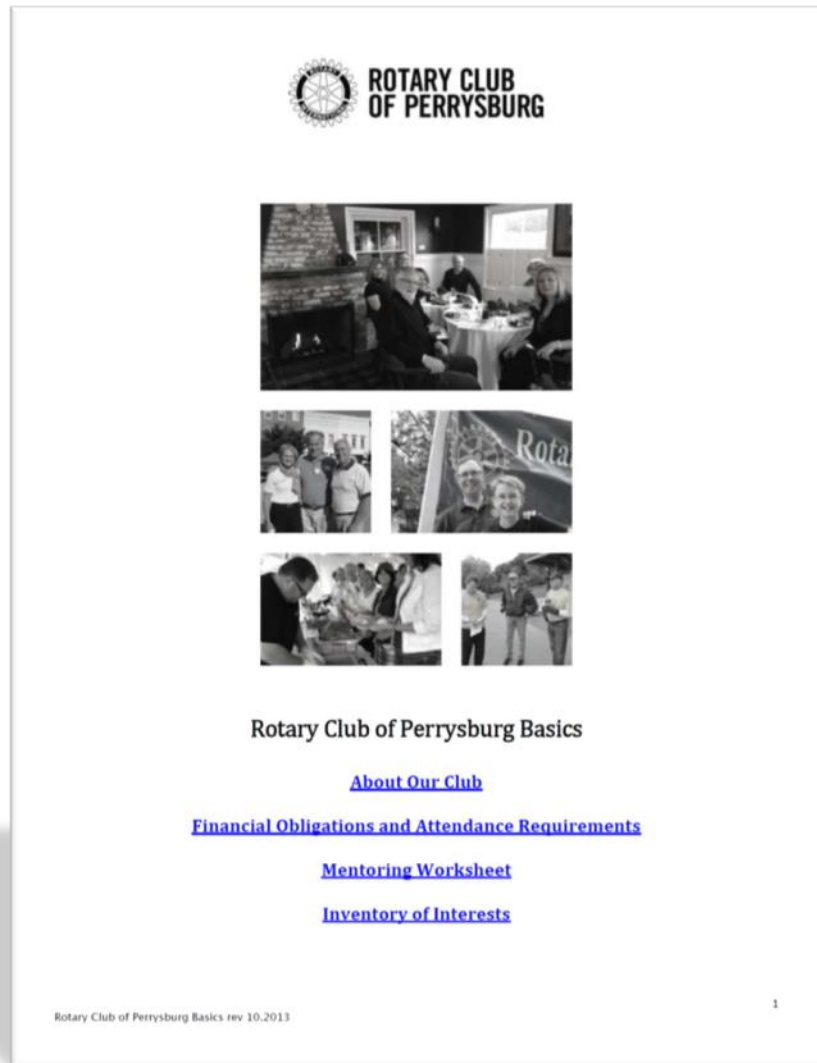
Activities that would enhance consideration as a Rotarian: _____

Proposer's Signature _____

Date _____

Rotary Club of Perrysburg Basics

- Document available online at www.perrysburgrotary.org

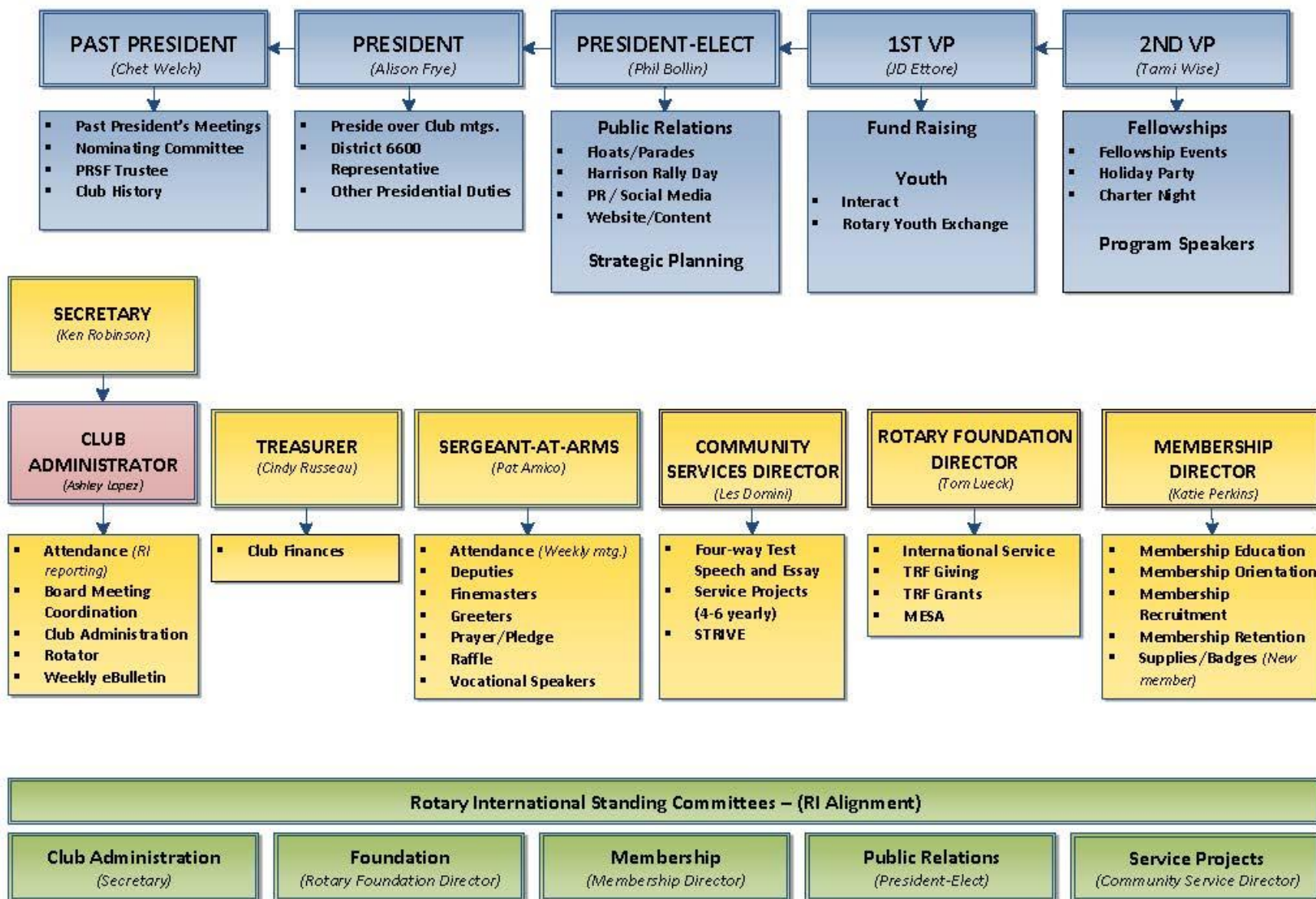


Fellowship Opportunities

- Through Committee Service
- By Attending New Member events
- Through Service Projects
- Through Fellowship Events
 - Rotary After Hours
 - Holiday Party (December)
 - Charter Night Celebration (June)

Club Organization Basics

2018-2019 Board Structure



Secrets of the Sergeant-at-Arms

- Fines
 - Way to combine trivia and fundraising
 - One member per meeting prepares questions
 - Suggested donation of \$2 per week.
- Queen of Hearts Raffle
 - Purchase tickets at back table
 - 1st winner wins bottle of wine from the back table
 - 2nd winner has a chance to draw the Queen of Hearts from the deck of cards. If the right card is chosen the winner wins half the pot of money.
 - Profit donated to our Perrysburg Rotary Service Foundation
 - Bring a bottle of wine during your birthday month.



Perrysburg Rotary Service Foundation (PRSF)

- Created in 1984 with the Club as the initial donor
- Created at a 501(c)3 organization so that contributions are tax-exempt
 - Rotary Clubs are generally 501(c)4 organizations
- **Different from The Rotary Foundation!**

- Trustees are elected by the club annually
 - 7 Elected, two classes of two, one class of three
 - 2 ex-officio, past presidents serve a two-year term
- Elected Trustees:
 - Greg Archambeau, Joanie Asendorf, Wayne Koskinen, Susan Nelson, Jim Nooney, Jack Sculfort, Dave Wise
- Two most recent club presidents:
 - Bruce Samuelson and Chet Welch

- The corpus value is roughly \$1,200,000
 - Spending distribution allows for 5% of a three year average for grant making
 - Approximately \$50,000 available for grants
- Event Based Fund-raising
 - All fund-raising events generally divide net proceeds between the corpus and direct distribution to club selected causes

- Philanthropy Plan
 - Guidelines for how money is allocated
 - Local Service Grants
 - Youth Service Grants
 - International Service Grants
 - Also provides for donor-directed giving
- Anticipated Cash Investment into Community from grants and donor-directed giving in 2018-19 is nearly \$100,000

- Grant Process

- Projects with a Rotarian Champion are much preferred
- Rotarian works with 501(c)3 organization to complete a one page application from our website
- Grants over \$1,000 require financial statement, board roster, agency mission statement, and proof of non-profit status
- Grant submitted to club board for recommendation
- Grants considered by Trustees after club board action



[HOME](#) [PERRYSBURG ROTARY SERVICE FOUNDATION](#) [CALENDAR](#) [SPEAKERS](#) [CONTACT US](#) [PHOTOS](#)

CLUB EXECUTIVES & DIRECTORS

Club Administrator
Ashley Lopez

President
Jennifer Fehnrich

President Elect
Bruce Samuelson

1st Vice President
Chet Welch

Community Service Director
Laura Moore

2nd Vice President
Alison Frye

Secretary
Richard Sipp

Treasurer
Cindy Russeau

Sergeant at Arms

It's amazing what we can accomplish when hearts and minds work together.

Since 1979, leaders from the Perrysburg community have joined leaders from different countries, cultures and occupations around the world to take action- *to enhance health, empower youth, promote peace, and advance community.*

Welcome to the Rotary Club of Perrysburg

Join us at a weekly meeting!

We meet Fridays at 11:45 AM
The Carranor Hunt & Polo Club
502 E 2nd St.
Perrysburg, OH 44862



SIGN UP FOR WEEKLY UPDATES!

Subscribe to our eBulletin and stay up to date on the latest news and events.

[Click here to sign up!](#)



UPCOMING SPEAKERS

Aug 28, 2015
Karen Ranney Wolkins
Toledo Botanical Gardens

My ClubRunner

[Edit My Profile](#)

[Change My Password](#)

[Upload My Photo](#)

[My Commitments](#)

[My New Member Activities](#) **NEW!**

[My Friends](#)

[View Club Directory](#)

[View Club Photo Directory](#)

[eDirectory Reports 2.0](#)

[View Printable Mailing Labels](#) **NEW!**

[Email Message Center](#)

[View Club Documents](#)

[My Attendance](#)

[My Committees](#)

[My Billing Account Balance](#)

Website Manager

[Website Designer 3.0](#)

[Edit Home Page Links](#)

[Edit Stories](#)

[Edit Events](#) | [Events 2.0](#) **NEW!**

[Edit Speakers](#)

[Edit Download Files](#)

[Edit Site Pages](#)

[Edit Photo Albums](#)

[Edit Club Documents](#)

[MyEventRunner Registration \(new window\)](#)

Club eBulletin

[Create Bulletin](#) **NEW!**

Membership Manager

[Club Dashboard](#)

[Active Member List](#)

[Other Users List](#)

[Inactive Members List](#)

[Friends of the Club](#)

[Online Newsletter Subscribers](#)

[New Member Program](#)

[Dues & Billing](#)

[Switch on Data Integration with RI \(Automatic\)](#)

[Report Data Changes to RI \(Manual Emails\)](#)

[Request Member Updates](#)

[Edit Executives and Directors](#)

[Committee Management](#)

[Birthday & Anniversary Report](#)

[Gender Distribution \(Summary\)](#)

[Download Member Data](#) **NEW!**

[Custom Reports \(Optional\)](#)

[Member Designations](#)

Meeting Services

[Input Attendance \(Current Year\)](#)

[Input Attendance \(Previous Year\)](#)

[Report Make-ups](#)

[Print Member List/Attendance Sheet](#)

[Print Member List \(Simple Version\)](#)

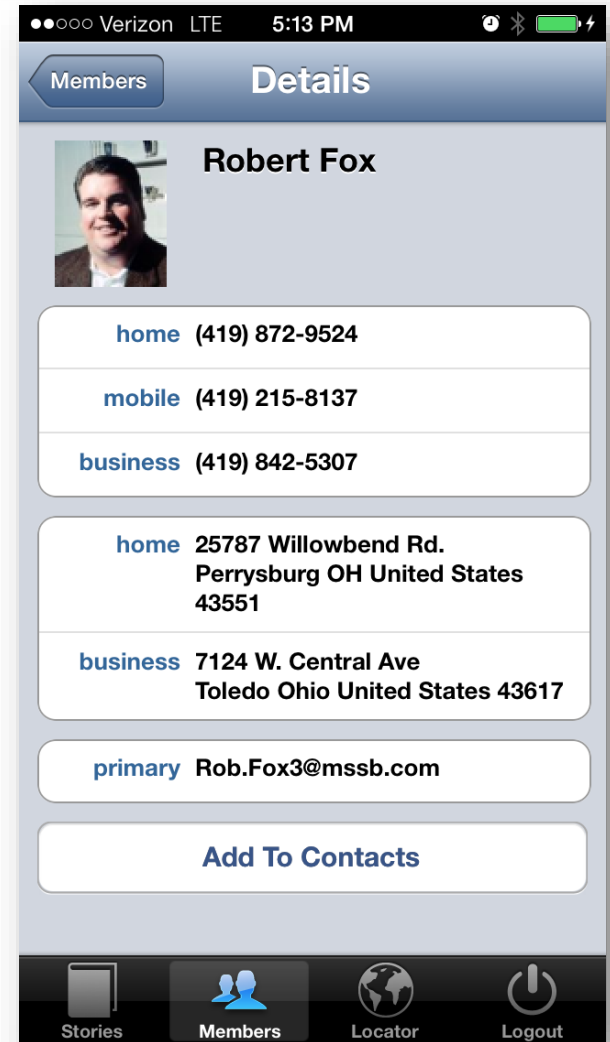
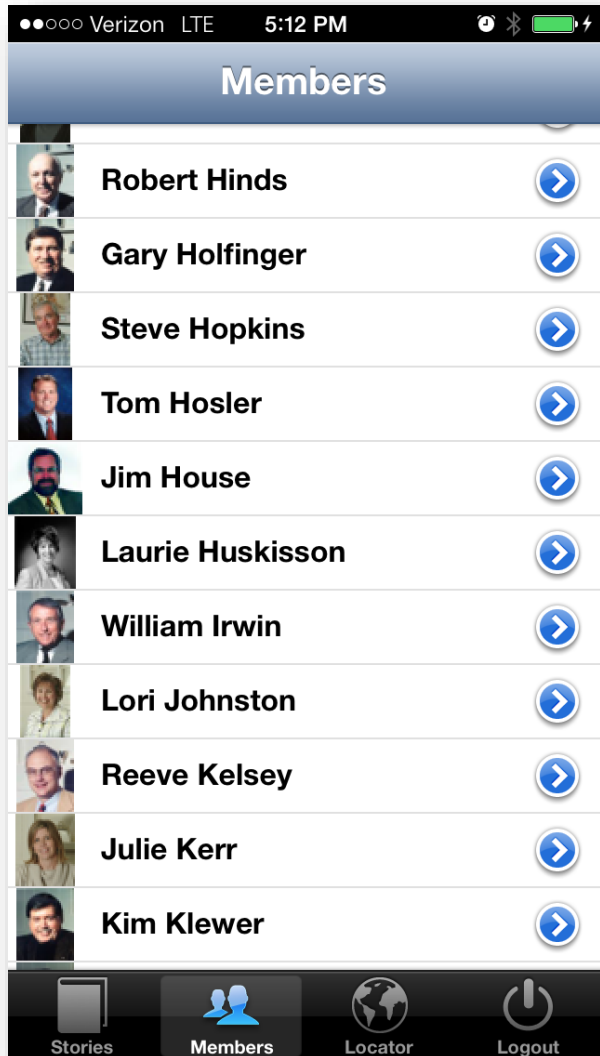
[Attendance Report \(Current Year\)](#)

[Attendance Report \(Previous Year\)](#)

[Monthly Club Report](#)

[Customized Attendance Report](#)

Clubrunner Mobile



Questions?

- Ask Your Sponsor or Mentor
- Reach out to any club officer or director or our club administrator
- Review Rotary Basics from Rotary International, “Rotary Club of Perrysburg Basics” and “New Member FAQs”
- Visit www.perrysburgrotary.org or www.rotary.org



Rotary Club Of Perrysburg

Thank You for Attending!