

Arbor Day 2020

Common Persimmon
Diospyros virginiana

Deciduous Tree

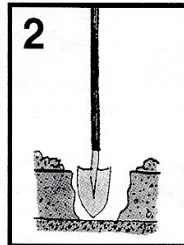
Fruit - delicious edible
berry when fully ripe



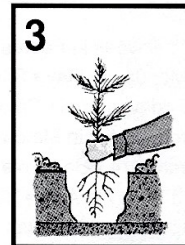
How To Plant Trees



1 Unpack tree and soak in water 3 to 6 hours. Do not plant with packing materials attached to roots, and do not allow roots to dry out.



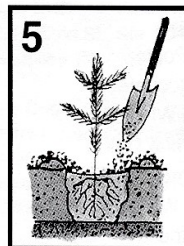
2 Dig a hole, wider than seems necessary, so the roots can spread without crowding. Remove any grass within a three-foot circular area. To aid root growth, turn soil in an area up to 3 feet in diameter.



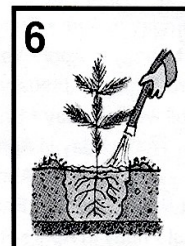
3 Plant the tree at the same depth it stood in the nursery, without crowding the roots. Partially fill the hole, firming the soil around the lower roots. Do not add soil amendments.



4 Shovel in the remaining soil. It should be firmly but not tightly packed with your heel. Construct a water-holding basin around the tree. Give the tree plenty of water.



5 After the water has soaked in, place a 2-inch deep protective mulch in an area 3 feet in diameter around the base of the tree (but not touching the trunk).



6 During dry weather, water the tree generously every week or 10 days during the first year.

~ Would advise to keep a chicken wire fencing around young seedlings for a few years to help protect it from weedwackers and animals browsing them. ~

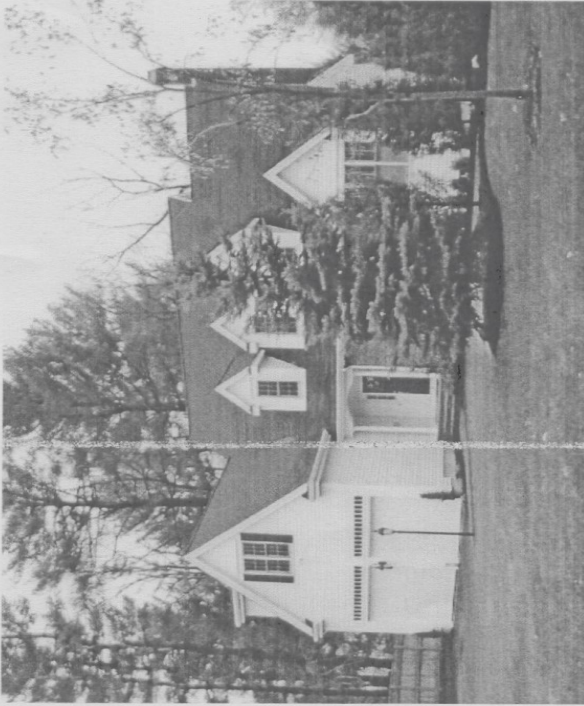


TREE CITY USA®

Tree seedlings sponsored and supplied by the Wellesley Rotary Club, Wellesley DPW, Mass. Tree Wardens and the National Arbor Day Foundation. We hope you enjoy your tree for many years to come! Websites of interest~ www.arborday.org/kids and www.arboretum.harvard.edu/index.html

If anybody has older siblings that have past trees that are living the DPW and the Wellesley Rotary Club would love to have a copy of a picture of your tree and with your child even better. A digital copy would be easiest. It can be sent to sjordan@wellesleyma.gov

Wellesley Rotary Arbor Day Program



Arbor Day is a special occasion to take notice of the trees around us and how they make our world more enjoyable, with their shade, coolness, and homes for birds and other animals.

The sapling you receive today is much like a spruce sapling Bob Grignafini received in 1979 when he was a Wellesley fourth grader. After planting it on Arbor

Day, 1979, he took good care of it and now, 27 years later, see what can happen!



Saplings donated courtesy of the Rotary Club of Wellesley in cooperation with Wellesley Tree & Parks.

We hope you take care of your sapling and take pleasure watching it grow!

Your tree is called a Common Persimmon and its scientific name is *Diospyros virginiana*. Persimmons are a native tree to the U.S. and grow to about 35-60ft tall and 20- 35ft; and about 12-24"/year. Young trees habit can be pyramidal but will get more broad and rounded. Interesting traits about your tree; has variable nice fall color and the bark in the winter can be showy when old having an interesting grey/ black blocky texture. Other good attributes are the fruit and flowers are great for pollinators such as bees and the Luna moth. The fruit when ripened can be made into a delicious pudding. Prefers moist loam soil that is well drained and a sunny location; tolerates drought very well and rocky soil and sun to partial shade. Can be slow at first to grow, but once it gets growing will grow well.