

TWO LIGHTS

Rotary Club of South Portland – Cape Elizabeth
February 20, 2019



UPCOMING PROGRAMS:

February 27 – Ellen Russell, American Cancer Society

March 6 – Julie Poulin, CASA

March 13 – Terri Mulks, Camp Susan Curtis

ASSIGNMENTS

	<u>February 27</u>	<u>March 6</u>	<u>March 13</u>
Opening Words	S Irving	Gowen	Knupp
Raffle Gift	Yerxa	Veroneau	Albert
Conductor	Britt	Hawes	Butler
Set Up #1	Kubeck	Healey	N. Irving
Set Up #2	Leasure	Higgins	Lohrman

Bob Knupp won a gift certificate to Terra Cotta donated by Tony Wagner – congratulations Bob (and Judy)

AND congratulations to Hugh O'Shea who won two round trip tickets on the Downeaster courtesy of our speaker!

MARK YOUR CALENDAR:

March 16, 7:30 – 3:30, Rotary Leadership Institute, Concord, NH (see District 7780 website FMI)

April 6, 8-1 – District Training Assembly, York County Community College

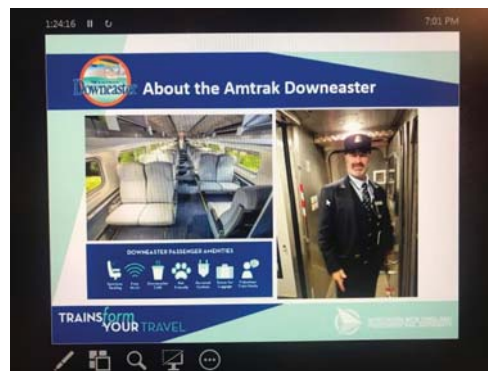
June 21-22, 2019 – District Conference at Fort Williams (Friday work detail 1-5 p.m.) Free event for the whole family – plan to attend!!

What's New With Our Members

Continuing get well wishes to John LoBosco, Diane Anderson & Tim Butterworth. (I just came from the Andersons' - Diane has a long recovery ahead of her but she is making progress and seems to be in very good spirits.)

Tree Sale Reaches New Height! – David Lourie announced the profit from the tree sale – over **\$54,000 – WOW!!!!** Congratulations to David and EVERYONE (club members, their family members and friends, Interact and PeaceJam students, Bath Savings employees, etc.!) who worked on the tree sale!

ALL ABOARD! – Do you recognize this conductor – is it our own Mike Geneseo?



No, it's not, but he has a connection with the Downeaster nevertheless – while he was dating his wife Becca, she was living in Maine and he was living in Boston and they dated via the Downeaster for two years.

Our speaker Jennifer Crosby, Marketing and Sales Coordinator for Northern New England Passenger Rail Authority (NNEPRA) was happy to hear Mike's plug for the train. NNEPRA is a quasi-state government agency which does not own the train (Amtrak) or the tracks (Pan Am) but manages the train service from Boston to Maine. There are currently 5 round trips daily between Brunswick and Boston. They would like to expand service to Rockland on a seasonal basis but it is a very expensive proposition so we'll keep our fingers crossed. They are also hoping to add a round trip commuter run between Wells and Boston.

Since 2001, the Downeaster has served over 7.1 million riders and brought in \$107 million in passenger revenues. This of course does not count the economic impact on the Maine (and NH) communities served by the train bringing visitors from Massachusetts.

The train has recently been refurbished with new seats and carpets so check it out! (Round trip to Boston fare is \$58 but there are a variety of discounts that you may be eligible for.)

**ROTARY CLUB OF SOUTH
PORTLAND/CAPE ELIZABETH, MAINE**
www.sp-ce-rotary.org

Officers

President – Fran Bagdasarian
President-Elect – David Lourie
Vice President – Anamaria Gonzalez Salguero
Secretary – Kathy Cotter
Treasurer – Nicole Albert

Directors

Club Administration – Michael Geneseo
Membership – Laurenz Schmidt
International & Foundation – Chuck Redman
Youth Services – Hugh O’Shea
Director-At-Large – Sue Sturtevant

Committee Chairs

Publicity – Sarah Higgins
Bulletin Editor – Nancy Hawes
Program Chair – David Bagdasarian

ROTARY INTERNATIONAL PRESIDENT

Barry Rassin
Rotary Club of East Nassau, Bahamas

DISTRICT 7780 GOVERNOR

John LoBosco
Rotary Club of South Portland-Cape Elizabeth