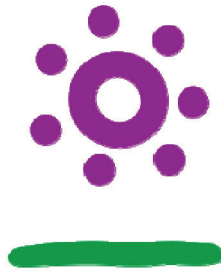


# TWO LIGHTS

**Rotary Club of South Portland – Cape Elizabeth**

**March 15, 2023**



**IMAGINE  
ROTARY**



*Together, we see a world where people unite and take action to create lasting change –  
across the globe, in our communities, and in ourselves.*

## Upcoming Dates:

**March 18** – Lions Club Spaghetti dinner, 5-7:30 at Lions Clubhouse, 1 Wheeler Road, Cape Elizabeth. \$12 adults/\$6 children. Dine-in (all you can eat) or Take-out.

**March 21** – Board meeting via Zoom – let President Jim know if you want to attend.

**March 22** – No Meeting

**March 23** – Food processing at South Portland Food Cupboard (*since we're not meeting next week, consider volunteering at the Food Cupboard instead!*)

**March 23, 7 p.m.** – somewhere/elsewhere, at Westbrook Performing Arts Center

**March 29** – Patty Cormier, Maine Forest Service

**April 5** – Nancy Strojny, Maine SCORE

**April 1, 8-12** – Club Visioning at South Portland Housing Authority

**April 6** – Theater Night at Lyric Theater. Proceeds of the show “Curtains, the Musical Comedy Whodunit” will benefit the District 7780 Recovery Initiative. You can order tickets on our club website.

**April 12** – Rachel Ohm, Portland Press Herald

**April 15, 8-3** – District Training Assembly at Westbrook High School

**Also on April 15** - Shredding Event and Food Drive at the SP Library 9am-Noon (to benefit SP Food Cupboard)

**April 19** – Visioning Results

**May 20** – 3rd Annual “Feeding Neighbors in Need” Benefit Concert (for SP Food Cupboard)

**June 10** – District year-end Celebration, Bailey Island

**July 19** – Lobster Bake

**March 29 Duties**

Opening Words – Filieo

Raffle Gift – Schmidt

Meeting Room Setup – – Dan McDonald

OWL Operation – *please sign up*

**April 5 Duties**

Opening Words – Dugan

Raffle Gift – Smith

**Opening Words** – Katelyn shared a poem called “Prologue to Spring” by Sylvia Plath. *(Note that there are several typos in the poem- I looked up the poem on multiple websites and apparently that's the way she wrote it.)*

The winter landscape hangs in balance now,  
Transfixed by glare of blue from gorgon's eye;  
The skaters freeze within a stone tableau.

Air alters into glass and the whole sky  
Grows brittle as a tilted china bowl;  
Hill and valley stiffen row on row.

Each fallen leaf is trapped by spell of steel,  
Crimped like fern in the quartz atmosphere;  
Repose of sculpture holds the country still.

What coutermagic can undo the snare  
Which has stopped the season in its tracks  
And suspended all that might occur?

Locked in crystal caskets are the lakes,  
Yet as we wonder what came of ice  
Green-singing birds explore from all the rocks.

## What's New With Our Members

Happy Birthday to

✿ Nancy Hawes - March 17

✿ Mike McGovern - March 17

🍰 Paul Butler - March 18 - turning 90!

🍰 Bev Altenburg - March 18

🍰 Peter Bennett - March 23

🍰 Marc Muttu - March 23

Congratulations to Bob Knupp who won Mariners tickets donated by Doug Schauf.

Thank you to everyone who helped at the Fireworks Friday (including our Lions friends), and especially Tony who spearheaded everything!



Thank you to Michele for bringing Irish soda bread to this week's meeting so we could all get a headstart on celebrating St. Patrick's Day!

Congratulations to Dan McDonald who our former member (and a facilitator at the event) Brenda Cressey described as a "star pupil" at last week's President-Elect Training Seminar (PETS)!

Paul Butler, who turns 90 on Saturday, March 18, said that he is overwhelmed by all the birthday cards he has received, and wants to express his sincere appreciation for thinking of him on this milestone.

Guests – We were joined by Wendell Milliken, a guest of Dan McDonald

**Welcome Catherine!!!** –Michele introduced our newest member Catherine Dorrington whom she met while performing her crossing guard duties. Presumably helping one of more of Catherine’s three daughters, ages 9, 11 and 13, to get to school in South Portland. Catherine had a background in occupational therapy and is the owner of Coastal Care Solutions, which provides home care needs. Catherine lives in South Portland Catherine’s father was a Rotarian so as Michele said, she has a “service bloodline.” Welcome Catherine!!



**Food Cupboard News** – Tony shared this from the weekly newsletter he receives from the SP Food Cupboard.

My goodness!!! WOW!!! When we say we have seen a significant increase in Recipients, we mean SIGNIFICANT.

Thursday – Near record breaking 61 families  
Tuesday – Record breaking 62 families  
This is becoming typical, now.

Reasons?

- Reduction in SNAP Benefits
- Increase in the number of New(er) Mainers.

YES!!! Our team is strong, but we can use your continued help.

FOOD DRIVE UPDATES:

- March 17 marks the end of Battle of the Neighborhoods Food Drive
- 40 Cans for Lent continues until April 9

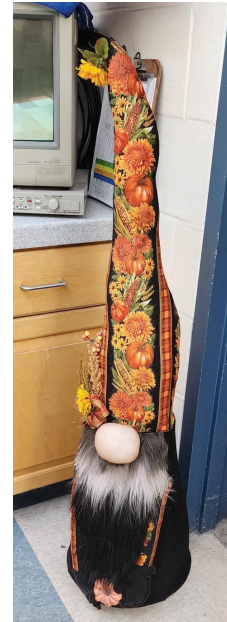
**Pre-Visioning** – Tony gave us an overview of what Visioning for our club is all about. He pointed out that successful clubs:

- ✓ Sustain and increase membership
- ✓ Implement successful service projects
- ✓ Support The Rotary Foundation
- ✓ Develop leaders in the club and beyond

So our session 2 weeks from Saturday – April 1 – will consist of us discussing ways that we can continue to keep our club strong and how we would like to see it evolve. In the words of Rotary founder Paul Harris, “Rotary is not an organization for introspection. It is rather one whose worth and purpose lie in future activity rather than past performance.”

## GNOMES AND MORE GNOMES!

Apparently the gnomes are starting to flow in to our drop-off sites and we are starting to amass a collection – on all points of the spectrum between cute and hideous.



### **Bob's March Rotary Magazine Quiz**

*I found the answer to #3 very surprising.*

1. The feature story is about Col Chris Kolenda's 1,700 mile bicycle ride to honor six deceased veterans under his command in Afghanistan. What kind of bike did he ride?
  - a. Schwinn
  - b. Yeti
  - c. Velotrix
  - d. Aethos Pro
2. What is the claim to fame of Clay Center, Kansas?
  - a. It is built entirely on clay.
  - b. It is known for its nearby ski slope made entirely of clay.
  - c. It is equidistant from NYC and LA.
  - d. It has the smallest active membership of any Rotary club in Kansas.
3. What year was the compound microscope invented?
  - a. 1904
  - b. 1590
  - c. 1848
  - d. 1770
4. The next RI Presidents is Gordon McNally from South Queensferry, Scotland. What will be his theme?
  - a. World Peace
  - b. Single Malt Scotch for All
  - c. Rotary is Amazing
  - d. Create Hope
5. Bonus Question. Victor Fleming's crossword puzzle has this questions 40 across: "old boom box feature" (seven letters). What is it? Antenna



**ROTARY CLUB OF SOUTH  
PORTLAND/CAPE ELIZABETH, MAINE**

Officers

President – Jim Britt  
President-Elect – Dan McDonald  
Vice-President – Nancy Irving  
Secretary – Kathy Cotter  
Interim Treasurer – Nancy Irving

Directors

Club Administration – Mike Tranfaglia  
Youth Services – Tiffanie Bentley & Sarah Fisher  
Community Services – Kiley Wilkens-O'Brien  
International Services/Foundation – Peter Bennett  
Membership – Matt McAleney  
Director-At-Large – Dave Bagdasarian

Committee Chairs

Visibility Co-Chairs – Fran Bagdasarian & Matt McAleney  
Webmaster – Jim Britt & Scott Irving  
Bulletin Editor – Nancy Hawes  
Program Chair – Chris Speh  
Club Protection Officer – Bob Knupp

**DISTRICT 7780 GOVERNOR**

Claudia Frost, Rotary Club of Brunswick

**ROTARY INTERNATIONAL PRESIDENT**

Jennifer Jones, Rotary Club of Windsor-Roseland, Ontario, Canada