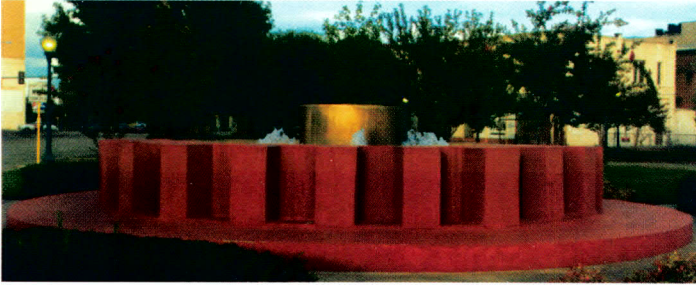


Published by the  
 Rotary Club of Beaumont USPS 471-700  
 Subscription price \$5.00 per year  
 Periodicals postage paid at Beaumont, Texas  
 Published weekly, except for Christmas week,  
 New Years week & two unspecified  
 non-meeting weeks.  
 POSTMASTER: send address changes to  
 Beaumont Hilton, Suite 213  
 2355 IH-10 South  
 Beaumont, TX 77705



Lend a Hand

Periodical  
 POSTAGE  
 Paid at  
 Beaumont, TX



The Rotary Fountain, Downtown Beaumont

Photo by Mark Low Imagery

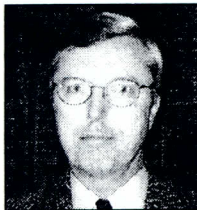


Photo by Steve Buser

A Publication of the Rotary Club of Beaumont, Texas - Club #72 Vol. 93 No. 22 November 26, 2003

## Elton Gish

### 100<sup>th</sup> Anniversary of Port Arthur Facility of Motiva Enterprises A Legacy of Spindletop and Sour Lake



The year 1903 was a benchmark year in the development of Southeast Texas and its economic influence worldwide. Elton Gish, Coordinator of Clean Products at the Motiva Enterprises' Port Arthur Refinery, has been interested in the history of the refinery for more than 20 years.

The Port Arthur Refinery, where The Texas Company (Texaco) began business, started up on November 13, 1903, charging Sour Lake crude. Prod-

ucts produced at the refinery quickly found their way to markets in Europe, Africa, and the Far East.

Mr. Gish is credited with saving many historic documents and several thousand old photographs and negatives which have proved invaluable in writing his book detailing the 100-year history of the refinery. Gish's book details the 100 year history of Port Arthur Facility, Port Arthur Terminal and Port Neches Facility.

Motiva Enterprises recently opened a museum to commemorate the 100<sup>th</sup>

*(Continued on page 2)*

## Head Table



INVOCATION  
**KEVIN ROY**



PLEDGE  
**JIM BROUSSARD**



4-WAY TEST  
**SAM LORD**



GUEST INTRODUCTION  
**CAROL FLATTEN**

*From the chef: Fried Chicken*



Providing education,  
 training and  
 employment  
 opportunities  
 for people with barriers  
 to employment

TEXAS



PLEDGE

Honor the Texas flag  
 I pledge allegiance to thee, Texas  
 One and indivisible.

**BEAUMONT**

TEXAS WITH A  
 LITTLE SOMETHING EXTRA.

Beaumont Convention & Visitors Bureau  
 Call us at 880-3749 or  
 visit our website [www.beaumontcvb.com](http://www.beaumontcvb.com)

**ROTARY CLUB OF BEAUMONT  
OFFICERS**

Azim Keramati ..... President  
Maurine Gray ..... President-Elect  
Paula Bothe ..... Vice President, Programs  
Terry Bourdier ..... Secretary, Membership  
Ben Orgain, Jr. .... Treasurer  
Lee Freeland ..... Sergeant at Arms  
Larry Beaulieu ..... Past President, Advisor

**DIRECTORS**

Eddie Arnold ..... Int'l & District Service  
Danny Babineaux ..... Fellowship  
Travis Brewer ..... Vocational Service  
Jim Broussard, Jr. .... Int'l & District Service  
Gerald Condon ..... Administration  
Carol Flatten ..... Vocational Service  
Roy Huckaby ..... Club Service  
Becky Mason ..... Youth Service  
Harland Merriam ..... Foundation  
Camille Mouton ..... Community Service  
Jim Rich ..... Membership

**BEAUMONT ROTARY FOUNDATION, INC.**

Maurine Gray  
Azim Keramati  
Eric Meadows  
Harland Merriam  
Peg Towers  
Michael Wolf

Bessie Chisum, RotaryGram Committee Chair

Alexine Boutin, Executive Director  
Office Hours: Weekdays 9:00 AM - 5:00 PM  
409-842-1913 • Fax: 409-842-5613  
rotarybmt1@yahoo.com  
Meets Wednesdays at Noon  
Beaumont Hilton • International Ballroom

**Future Programs**

**December**

3<sup>rd</sup> Beaumont Community Players

**Make-ups**

**Monday:**

No. Port Arthur ..... Holiday Inn Hwy 69  
Vidor ..... Hibernia National Bank

**Tuesday:**

Spindletop ..... Holiday Inn 11th St.  
Orange ..... Sunset Grove  
Port Neches ..... Pompano Club

**Wednesday:**

Groves ..... Pompano Club

**Thursday:**

Port Arthur ..... Holiday Inn Hwy 69

**Friday:**

Nederland ..... Garden Tea Room

**Program Review**

The Rotary Club of Beaumont was treated to an interesting presentation by Dr. Paul Pacter, Director of Standards for Small and Medium-Sized Entities (SMEs) at the International Accounting Standards Board in London and Director in the Global IAS Office of Deloitte Touche Tohmatsu in Hong Kong.

Dr. Pacter spoke about his work in comparing Chinese accounting standards with United States or International standards and the problems that the differences cause for investors and others doing business in China.

He addressed the economy and capital markets of the People's Republic of China (PRC) as well as accounting and financial reporting in China. China's economy is now the fourth largest in the world and is expected to grow at a rate of 8.5% in 2003.

There are around 450,000 foreign-owned companies in China and the country achieved the highest foreign direct investment in the world in 2002. So the prospects for business and investment in China are certainly great.

He then recounted some of the "horror stories" of doing business in China. They include:

- Chinese investors are individuals not knowledgeable institutional investors;
- most listed PRC companies are NOT audited by international auditing firms;
- there is a shortage of skilled actuaries, appraisers, and financial analysts;
- weak corporate governance systems; and
- widespread mismanagement, bad debts, and corruption.

The program concluded with Dr. Pacter summarizing his views with one word:

Progress has been  
**ENORMOUS;**  
Problems facing the economy are  
**ENORMOUS;** but  
Prospects for the future are also  
**ENORMOUS.**

Dr. Pacter had been speaking to classes at Lamar University for several days as part of the Executive in Residence Program jointly sponsored by Lamar and Texas A&M University. He is the third speaker this year in the program funded by ExxonMobil. After the meeting, he visited College Station for several more days of lectures.

Our thanks go to **Henry Venta** who arranged Dr. Pacter's visit to our club.

*(Continued from page 1)*

anniversary and includes Gish's historic collection. Some of the more interesting items in the museum are the original construction bid documents from 1903, an old wooden camera used to take employee photographs as late as 1984, several long panoramic views of the refinery and shipping terminal from 1906 to 1930, thousands of photographs taken in the first 60 years, and an extensive collection of cans that were made and filled in Port Arthur from 1910 to 1984 when the canning plant was shut down. The museum is located in Motiva's Employee Building.

Gish is in charge of gasoline blending and production of other fuel products at Motiva. He began employment at the Port Arthur Refinery in 1968 working as a student engineer while attending Lamar University. After graduating with a Chemical Engineering degree in 1972, he was employed by the refinery where he has worked in various positions in Process Engineering, lubricants manufacture, and Business Planning. Motiva Enterprises is 50% ownership of Shell Oil Products US and Saudi Refining, Inc. What began 100 years ago in November 1903 as The Texas Company, then Texaco became Star Enterprise and now, Motiva Enterprises.

**Wathen,  
DeShong  
& Juncker,**

L.L.P.  
Certified Public Accountants

1140 Gladys, Ste. 101 • Beaumont, TX 77706-3648  
Phone (409) 838-1605 • Fax (409) 838-3316  
www.wdjcpa.com



**TIME WARNER  
CABLE**

Public Affairs/  
Government Relations  
Gary Underwood  
727-1515

Ad Sales Manager  
Bruce Walker  
924-9500

**Star  
graphics**

409-892-0671  
Beaumont, Texas

Copiers ★ Printing Solutions  
Fax Machines ★ Computer Equipment

**Konica TOSHIBA SHARP**

**Charles H. Weinbaum, Jr.  
Receives  
2003 T. Kelsey Lamb, Sr.  
Award for Business Ethics**



Past President (and past award winner) **Floyd McSpadden** (I) presented the 2003 T. Kelsey Lamb, Sr. Award for Business Ethics to Past President **Charlie Weinbaum** (pictured above with President **Azim Keramati**) at the November 19<sup>th</sup> meeting.

In accepting the award, Charlie acknowledged that possibly for the first time in his life he was speechless.

Charlie is a third-generation Beaumont Rotarian who joined in 1949 and served as 1983-84 President. His grandfather Hyman Perlstein, an early member of the club, sponsored his son-in-law Charles H. Weinbaum for membership in January, 1924. Charlie's son **Bo** (1978) is carrying the family's Rotary tradition into the fourth generation.

The award, given to the Rotarian who lives the Four Way Test personally and professionally, honors T. Kelsey Lamb who served as President of the Rotary Club of Beaumont in 1942-43 and as District Governor in 1951-52. His son **Tom, Jr.** served as President in 1971-72 and his grandson **Tommy (III)** served as President in 1996-97.

Charlie's birthday was November 23<sup>rd</sup> so the award was an early birthday gift and honor from his fellow Rotarians. Congratulations from all of us!

## Birthdays

**26<sup>th</sup> Eddie Arnold** (98)  
Regional Manager  
SBC Southwestern Bell



Born in Pittsboro, Pennsylvania, he is a graduate of Stephen F. Austin State University. He and his wife **Sheri** are the parents of Aaron, Kelly, Holly and Carol. He enjoys playing golf, fishing and travel. Eddie is a Paul Harris Fellow.

**26<sup>th</sup> Kathy Snyder** (01)  
CEO,  
Healthsouth Rehabilitation Hospital  
of Beaumont



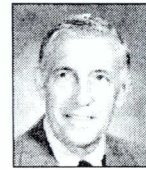
Born in Midland, she is a graduate of Texas Christian University. She and her husband Graham are the parents of Matthew, and are members of First Christian Church. She enjoys fishing, playing golf, and volunteer work.

**27<sup>th</sup> Margaret Cherb** (87)  
Retired Executive Director,  
Rotary Club of Beaumont



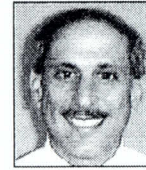
Born in Mobile, Alabama, she is a graduate of the Salvation Army College and is a member of Calvary Baptist Church. She enjoys music, travel and reading. Margaret is a Paul Harris Fellow.

**29<sup>th</sup> Ken Ruddy** (56)  
President,  
SE Texas Classic Automotive, Inc.



Born in St. Louis, Missouri, he is a graduate of St. Louis State University and Iowa State University. He and his wife Therese are the parents of Sharon, Deborah, Roane, Therese, Christine, Ken Jr., Erin, Patrick, Elizabeth and Peter, and are members of St. Anne's Catholic Church. He enjoys fishing and hunting. Ken is a Paul Harris Fellow.

**1<sup>st</sup> Marty Vershel** (99)  
Senior Pastor  
Wesley United Methodist Church



Born in Brooklyn, New York, he is a graduate of Southern Methodist University. He and his wife Margaret are the parents of Connor and Zack, and are members of Wesley United Methodist Church. He enjoys playing baseball, reading, movies, playing golf and teaching.

## Holiday Party

**Save the Date- December 16, 2003**

The Rotary Holiday Party will be held Tuesday, December 16<sup>th</sup> on the 8<sup>th</sup> Floor of the John and Mary Gray Library of Lamar University at 7:00p.m. Invitations will be mailed to your home and responses made to the Rotary office.

A fun evening is planned including a unique meal, the Beaumont Rotary Chorus and dancing to the beat of Toby Castro and Friends. Cost is \$25.00 per person. A cash bar will be available.

We want this to be a fun and happy celebration of the holiday season and to honor ninety years of the Rotary club of Beaumont and ninety-eight years of Rotary International.

**Please plan to attend!**

## Ramblings

**Toby Castro** rose to the challenge in leading us in the Texas flag pledge for the first time (see the front page of this *RotaryGram*).

**Billy Kinney** is one of the few Rotarians observed reciting the Texas flag pledge by heart. No one noticed him memorizing it from the *RotaryGram*.

The question is: Who gets to sit with the lemons and butter next week?

jkchevrolet.com 409-722-0443

**JK CHEVROLET**  
**ISUZU**  
at the airport

Our People Make the Difference

THIS WEEK OUR  
**iTeam** investigates  
SOLDIERS  
AND THANKSGIVING  
ON  
**KBMT 12 NEWS**

**HEALTHSOUTH**

Rehabilitation Hospital

3340 Plaza 10 Blvd.

Beaumont, Texas 77707

409-835-0835

Kathy Snyder, CEO healthsouth.com