

DIRECTIONS TO PRESERVE

The 64 acre preserve is just south of the Woodforest Development and Golf Course and part of a 530+ acre nature preserve. At this time only the 64 acre county preserve is open to the public.

FROM THE NORTH

Follow FM 2854 from the east or west to Fish Creek Thoroughfare (FCT) (light at the bridge over 2854). Follow FCT south approximately 4.2 miles to a road on the left leading to the trail head. Once you pass the entrance to the golf club you will start dropping into the Lake Creek flood plain. Continue past the light for the Woodforest Parkway. The access road is on the left immediately past a large Woodforest Development sign. There is currently no crossover at that point so you will either have to go to the end of the grassy median and make a u turn (traffic permitting) or continue across the bridge to turn around. There is an easy place to turn around on the left immediately after you cross the bridge. Once you reach the access road follow it for about two tenths of a mile to the trailhead on the right.

FROM THE SOUTH

Follow FM 1488 from the east or west to the intersection of FM 1488 and FM 2978. From the Intersection go north (the road name changes several times from Honea-Egypt Rd to Sendera Ranch Drive and Fish Creek Thoroughfare once you cross the Fish Creek Bridge). Continue straight on these roads through the Sendera Ranch and Montgomery Trace developments and across the long bridge across Lake Creek. The turn off to the preserve trail head will be on the right after you cross the bridge and immediately before the large Woodforest Development sign on the right. There is also a road sign marking the entrance. Follow the dirt road about two tenths of a mile to the trail head on the right. If you reach The Woodforest Thoroughfare you hve gone too far.

TWO MAPS FOLLOW

LOCATION OF LAKE CREEK PRESERVE





FUTURE NATURE PARK

WOODFOREST
PARKWAY

PRESERVE ACCESS

LAKE CREEK
NATURAL AREA

PRIVATE LANDS

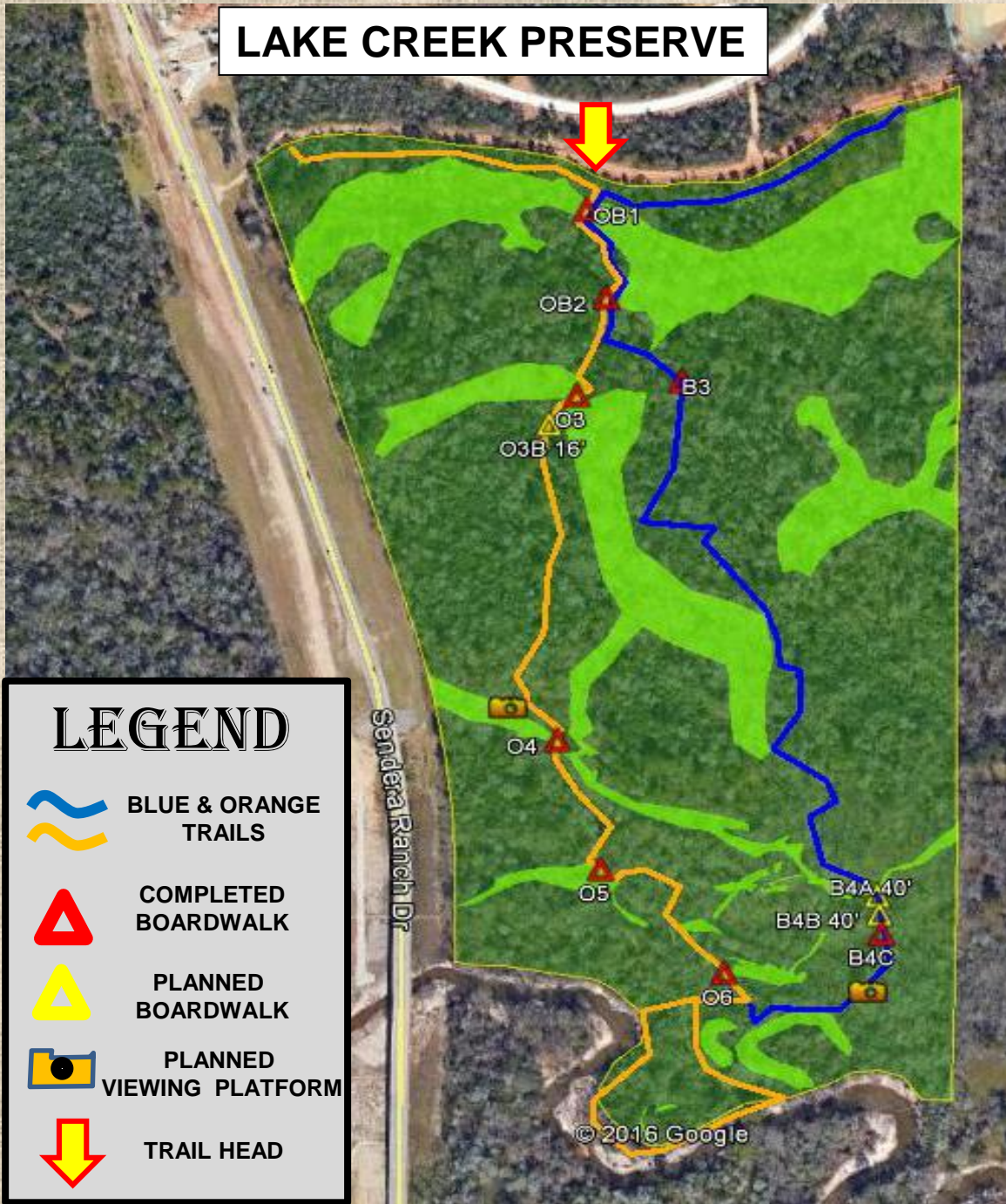
Sendera Ranch Dr

LAKE CREEK

© 2016 Google

Google earth

LAKE CREEK PRESERVE



LEGEND

- BLUE & ORANGE TRAILS
- PLANNED BOARDWALK
- COMPLETED BOARDWALK
- PLANNED BOARDWALK
- PLANNED VIEWING PLATFORM
- TRAIL HEAD